

# OUTSULATION<sup>®</sup> MD SYSTEM

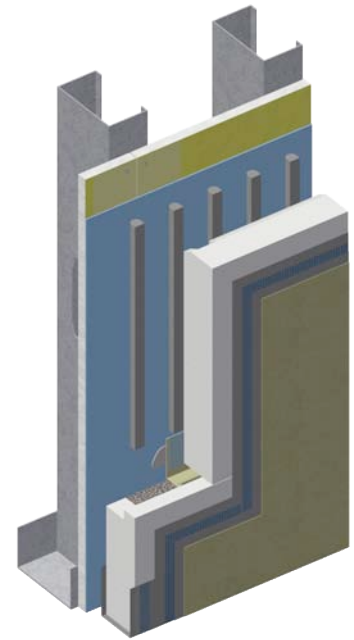
## DSC443NC

Commercial EIF System incorporating an air and water-resistive barrier coating with a means of positive moisture drainage

Taking the worry out of the wall by using an advanced design concept -- Moisture Drainage For Even Better Wall Performance. Outsulation MD is part of Dryvit's family of high-performance exterior insulation and finish systems for commercial use. Since 1969, architects and owners have looked to Dryvit for excellence in EIFS. For over 35 years, the barrier style, Class PB, Outsulation System has remained essentially as originally designed and has been installed on over 350,000 buildings worldwide. Today, there is increased demand for a wall system to be able to drain away incidental moisture. Dryvit responds to this demand with Outsulation MD.

### Components - Look inside the Outsulation MD System

1. Backstop<sup>™</sup> NT / Dryflex<sup>™</sup> or Airsulation<sup>™</sup> Water-Resistive Barrier Coating
2. Dryvit Grid Tape<sup>™</sup> / AquaFlash<sup>®</sup> Mesh
3. Dryvit AquaFlash System or Flashing Tape<sup>™</sup> and Flashing Tape Surface Conditioner<sup>™</sup>
4. Dryvit Vent Assembly<sup>™</sup>
5. Dryvit Track and Vent Track<sup>™</sup>
6. Dryvit AP Adhesive to Adhere Dryvit Track and Vent Track
7. Dryvit Adhesive in Vertical Notched Trowel Configuration
8. Dryvit AquaDuct (optional, not shown)
9. Insulation Board with Channels
10. Dryvit Reinforced Base Coat
11. Dryvit Finish



### Moisture Drainage Technology

Outsulation MD offers the most comprehensive, easy-to-install drainage system available for commercial use today. It provides three lines of defense against water intrusion. The first is Dryvit's time-tested combination of reinforced base coat and finish. The second is our specially-designed, grooved EPS with drainage track and vent assembly. The third is Backstop NT, an air and water-resistive barrier. A waterproof flashing material such as Dryvit AquaFlash System or flashing tape is also used to protect sills of wall openings (such as windows). A compatible sealant must be utilized at all system terminations.

### Why the choice Water Resistive Barriers?

The drainage channels present in Outsulation MD will evacuate "incidental" water that, for a variety of reasons, may find its way behind the EPS insulation. Water Resistive Barriers (WRBs) prevent this moisture from coming into contact with the substrate, as it drains. All Dryvit WRBs are Classified in Canada as a Type III air barrier, but offer arrange of vapour permeability for highly permeable Backstop NT, to Airsulation's Type 1 vapour barrier classification (less than 15 metric perms), allowing the designer to balance exterior wall system properties with the building's mechanical and interior climate controls. All WRBs are specially formulated, flexible, polymer-based, coatings provided air and moisture barrier function. Dryvit's WRBs are an essential element of the Outsulation MD System. Details regarding the performance of Dryvit barriers are available upon request from Dryvit.

### Warranty

Dryvit Systems Canada shall provide a written moisture drainage and limited materials warranty against defective material upon written request. Dryvit shall make no other warranties, expressed or implied. Dryvit does not warrant workmanship. Full details are available from Dryvit Systems Canada.

Dryvit Systems Canada  
129 Ringwood Drive  
Stouffville, Ontario  
Canada L4A 8A2  
1-800-263-3308  
www.dryvit.com

Information contained in this product sheet conforms to the standard detail recommendations and specifications for the installation of Dryvit Systems Canada products as of the date of publication of this document and is presented in good faith. Dryvit Systems Canada assumes no liability, expressed or implied, as to the architecture, engineering or workmanship of any project. To ensure that you are using the latest, most complete information, contact Dryvit Systems Canada.

