

OUTSULATION[®] (NC) SYSTEM

DSC107NC

An exterior wall insulation and finish system with secondary water-resistive barrier

Outsulation / Outsulation NC System Installation Details

TABLE OF CONTENTS

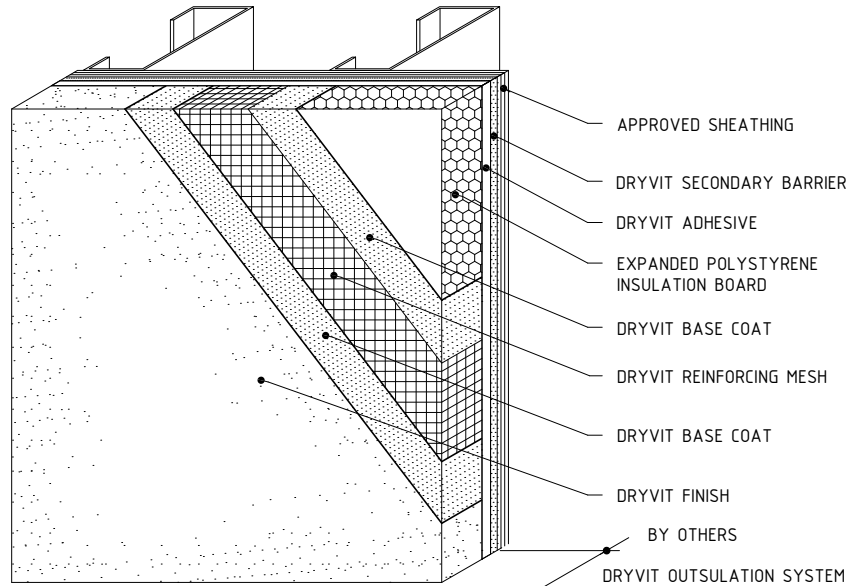
DETAIL		NOTE
OUTSULATION SYSTEM	0S 0.0.01	<p>DRYVIT SYSTEMS INC. MAKES NO REPRESENTATION REGARDING CONFORMITY OF ITS SUGGESTIONS TO MODEL BUILDING CODES, ENGINEERING CRITERIA, SPECIFIC APPLICATIONS OR PROJECT LOCATIONS. ALL COMPONENTS INDICATED IN ILLUSTRATIONS, AS WELL AS OTHERS THAT MAY BE REQUIRED FOR THE INTEGRITY OF THE SYSTEM SHALL BE DESIGNED, DETAILED AND ENGINEERED BY REPRESENTATIVES OF THE ARCHITECT, OWNER OR CONTRACTOR TO BE IN CONFORMANCE WITH MODEL CODES, ARCHITECTURAL AND ENGINEERING REQUIREMENTS PERTAINING TO SPECIFIC BUILDING PROJECTS.</p> <p>DRYVIT SYSTEMS CANADA MAKES NO WARRANTY, EXPRESSED OR IMPLIED, AS TO THE ARCHITECTURAL DESIGN, ENGINEERING, OR WORKMANSHIP OF PROJECTS UTILIZING DRYVIT SYSTEMS OR PRODUCTS.</p> <p>THE LIABILITIES OF DRYVIT SYSTEMS CANADA SHALL BE AS STATED IN THE DUAL BARRIER LIMITED COMMERCIAL WARRANTY. CONTACT DRYVIT SYSTEMS CANADA FOR A FULL AND COMPLETE COPY OF THE WARRANTY.</p>
FOUNDATION	0S 0.0.02	
FOUNDATION GRADE LEVEL - TERMINATION AT CONCRETE CURB	0S 0.0.03	
HEAD/SILL	0S 0.0.04	
JAMB	0S 0.0.05	
PARAPET - CAP FLASHING	0S 0.0.06	
PARAPET - SOLID SUBSTRATE	0S 0.0.07	
SOFFIT/FASCIA INTERSECTION	0S 0.0.08	
SOFFIT - UNINSULATED	0S 0.0.09	
INSIDE/OUTSIDE CORNERS	0S 0.0.10	
OUTSIDE CORNER - HIGH IMPACT	0S 0.0.11	
HORIZONTAL EXPANSION JOINT	0S 0.0.12	
EXPANSION JOINT AT FLOOR LINE	0S 0.0.13	
EXPANSION JOINT OPTIONS	0S 0.0.14	
STRUCTURAL EXPANSION JOINTS	0S 0.0.15	
PENETRATIONS	0S 0.0.16	
WALL PENETRATIONS	0S 0.0.17	
SIGN ATTACHMENT	0S 0.0.18	
AESTHETIC REVEALS	0S 0.0.19	
PROJECTING GRAPHICS	0S 0.0.20	
RECESSED GRAPHICS	0S 0.0.21	

Outsulation[®] (NC)

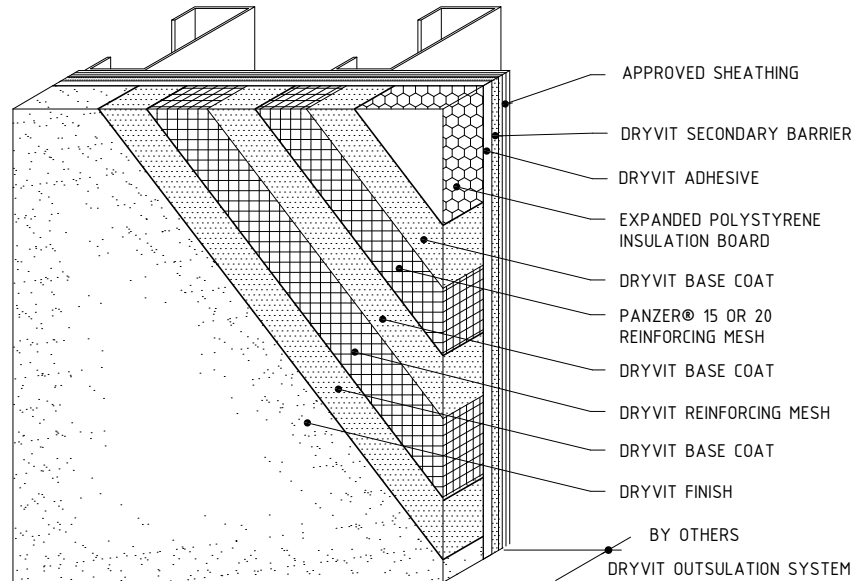
The architecture, engineering and design of the project using the Dryvit products is the responsibility of the project's design professional. All systems must comply with local building codes and standards. This detail is for general information and guidance only and Dryvit specifically disclaims any liability for the use of this detail and for the architecture, design, engineering or workmanship of any project. The project design professional determines, in its sole discretion, whether this detail or a functionally equivalent alternative is best suited for the project. Use of a functionally equivalent detail does not violate Dryvit's warranty. This detail is subject to change without notice. Contact Dryvit to insure you have the most recent version.



**NORMAL
IMPACT**



**HIGH
IMPACT**



Outsulation® (NC)

Outsulation System

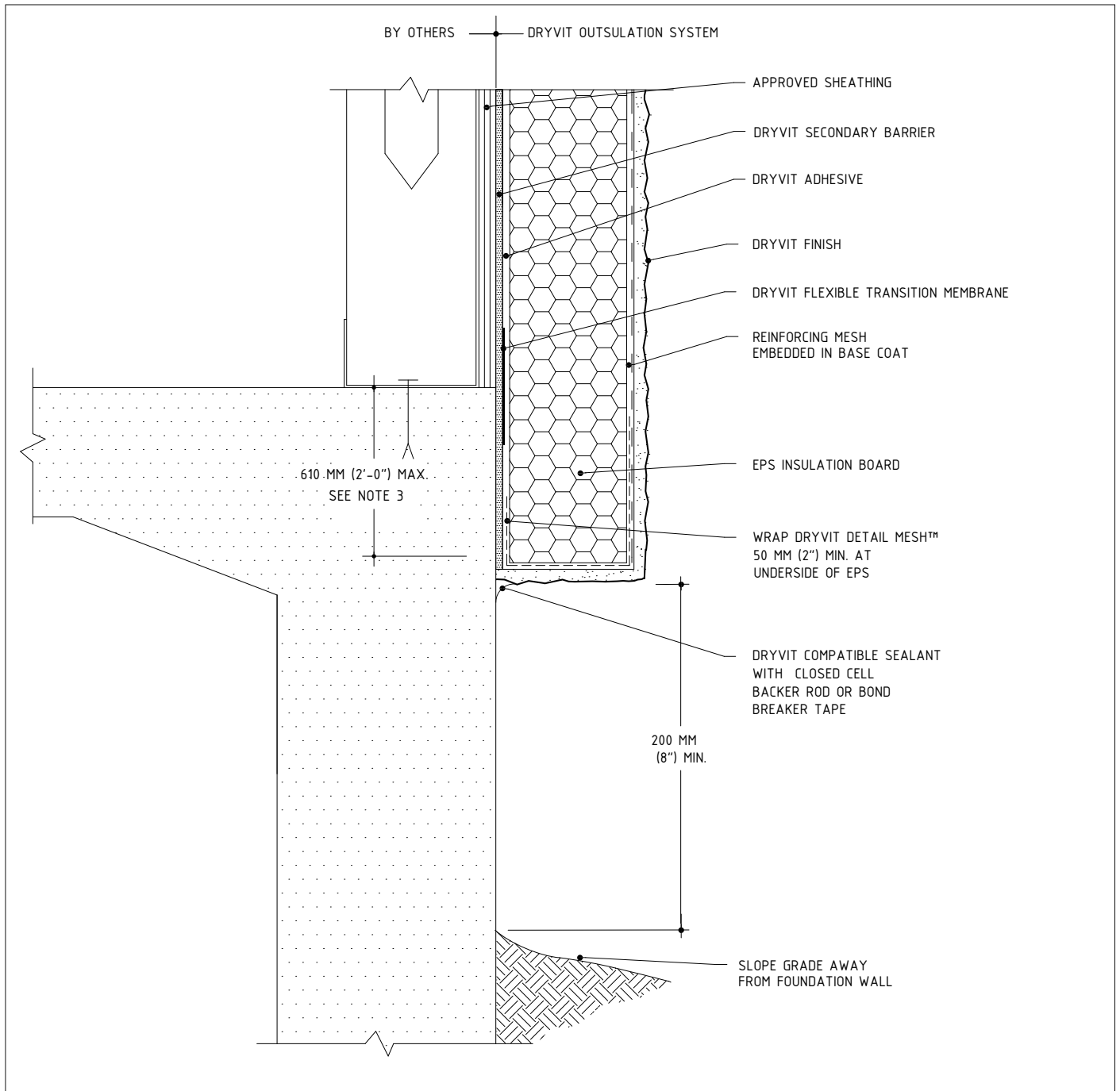
NOTE:

1. THESE DETAILS ARE MEANT TO APPLY TO BOTH OUTSULATION AND OUTSULATION NC. OUTSULATION NC REQUIRES THE USE OF PRIMUS® DM AS THE BASE COAT/ADHESIVE.

2. DRYVIT RECOMMENDS THAT GROUND FLOOR APPLICATIONS AND ALL FACADES EXPOSED TO ABNORMAL STRESS, HIGH TRAFFIC, OR DELIBERATE IMPACT HAVE THE BASE COAT REINFORCED WITH PANZER® 15 OR 20 MESH PRIOR TO STANDARD OR STANDARD PLUS MESH. LOCATION OF HIGH-IMPACT AREAS SHOULD BE INDICATED ON CONTRACT DRAWINGS.

The architecture, engineering and design of the project using the Dryvit products is the responsibility of the project's design professional. All systems must comply with local building codes and standards. This detail is for general information and guidance only and Dryvit specifically disclaims any liability for the use of this detail and for the architecture, design, engineering or workmanship of any project. The project design professional determines, in its sole discretion, whether this detail or a functionally equivalent alternative is best suited for the project. Use of a functionally equivalent detail does not violate Dryvit's warranty. This detail is subject to change without notice. Contact Dryvit to insure you have the most recent version.

APPROVED BY:	REV:	DATE:
PC	4	07/08



Outsulation® (NC)

Foundation

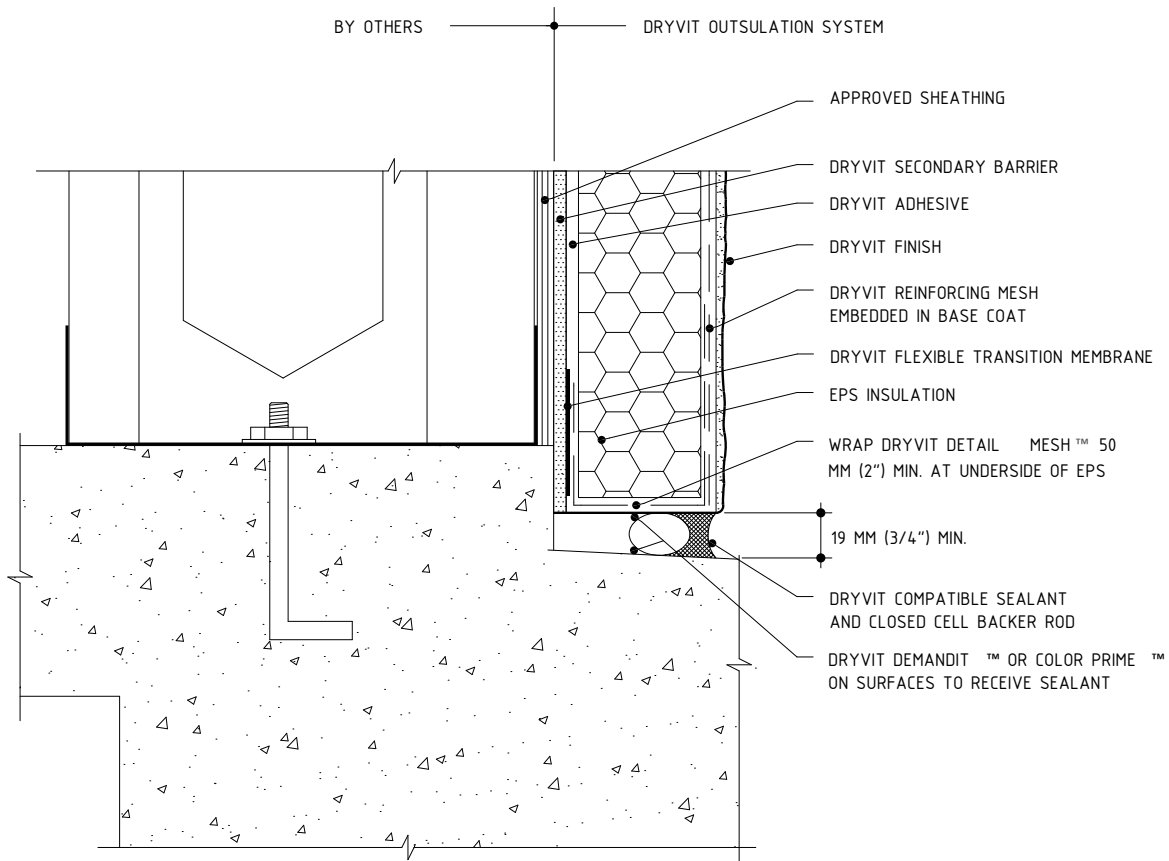
NOTE:

1. THESE DETAILS ARE MEANT TO APPLY TO BOTH OUTSULATION AND OUTSULATION NC. OUTSULATION NC REQUIRES THE USE OF PRIMUS® DM AS THE BASE COAT/ADHESIVE.
2. DRYVIT RECOMMENDS THAT GROUND FLOOR APPLICATIONS AND ALL FACADES EXPOSED TO ABNORMAL STRESS, HIGH TRAFFIC, OR DELIBERATE IMPACT HAVE THE BASE COAT REINFORCED WITH PANZER® 15 OR 20 MESH PRIOR TO STANDARD OR STANDARD PLUS MESH.

3. LOCATION OF HIGH IMPACT ZONES SHOULD BE INDICATED ON CONTRACT DRAWINGS.
3. EXPANSION JOINT IS REQUIRED ALONG TOP OF FOUNDATION IF 2'-0" (610 MM) DIMENSION IS EXCEEDED.

The architecture, engineering and design of the project using the Dryvit products is the responsibility of the project's design professional. All systems must comply with local building codes and standards. This detail is for general information and guidance only and Dryvit specifically disclaims any liability for the use of this detail and for the architecture, design, engineering or workmanship of any project. The project design professional determines, in its sole discretion, whether this detail or a functionally equivalent alternative is best suited for the project. Use of a functionally equivalent detail does not violate Dryvit's warranty. This detail is subject to change without notice. Contact Dryvit to insure you have the most recent version.

APPROVED BY:	REV:	DATE:
PC	4	07/08



Outsulation® (NC)

Grade Level - Termination At Concrete Curb

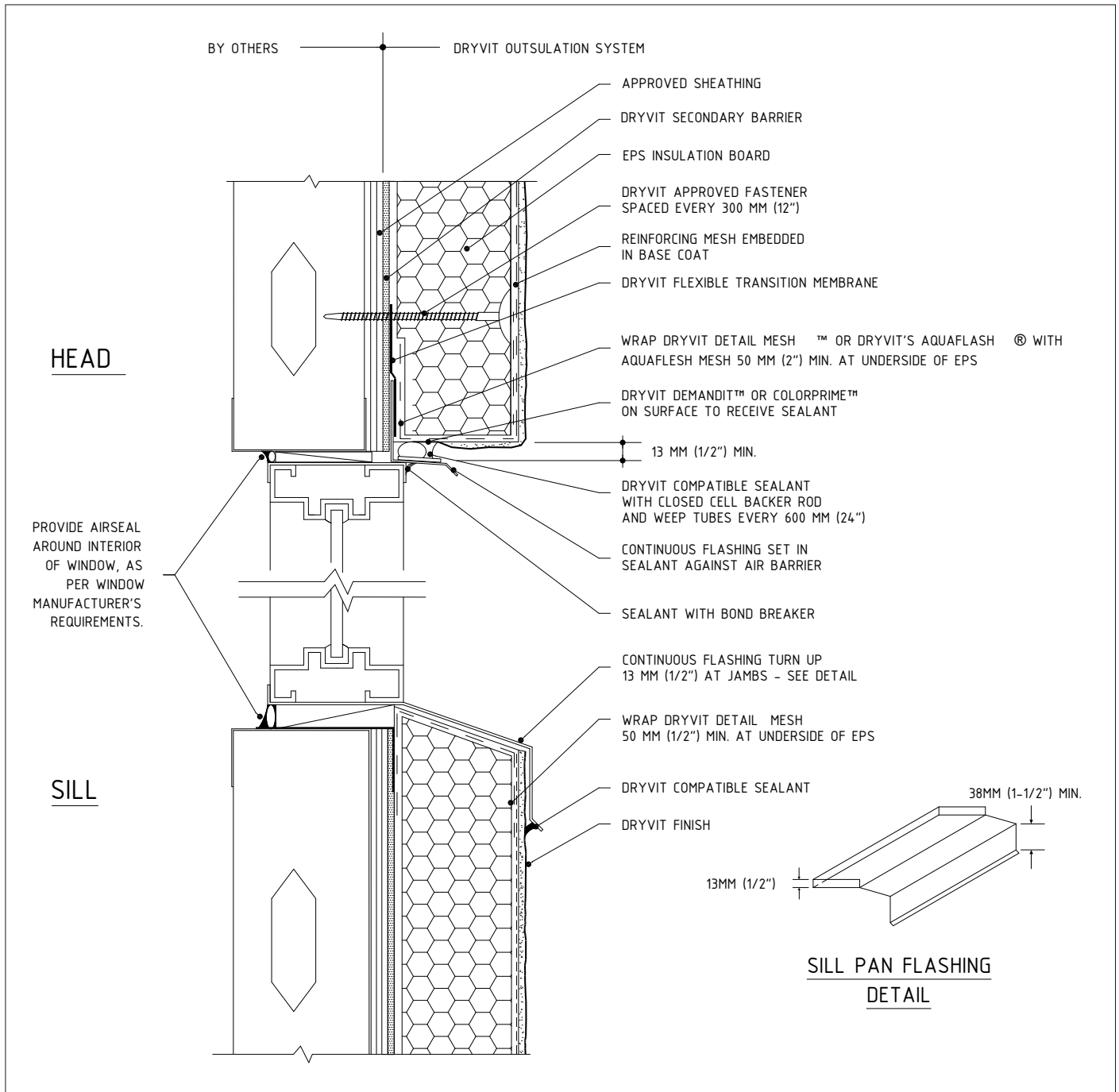
NOTE:

1. THESE DETAILS ARE MEANT TO APPLY TO BOTH OUTSULATION AND OUTSULATION NC. OUTSULATION NC REQUIRES THE USE OF PRIMUS® DM AS THE BASE COAT/ADHESIVE.

2. DRYVIT RECOMMENDS THAT GROUND FLOOR APPLICATIONS AND ALL FACADES EXPOSED TO ABNORMAL STRESS, HIGH TRAFFIC, OR DELIBERATE IMPACT HAVE THE BASE COAT REINFORCED WITH PANZER® 15 OR 20 MESH PRIOR TO STANDARD OR STANDARD PLUS MESH. LOCATION OF HIGH-IMPACT AREAS SHOULD BE INDICATED ON CONTRACT DRAWINGS.

The architecture, engineering and design of the project using the Dryvit products is the responsibility of the project's design professional. All systems must comply with local building codes and standards. This detail is for general information and guidance only and Dryvit specifically disclaims any liability for the use of this detail and for the architecture, design, engineering or workmanship of any project. The project design professional determines, in its sole discretion, whether this detail or a functionally equivalent alternative is best suited for the project. Use of a functionally equivalent detail does not violate Dryvit's warranty. This detail is subject to change without notice. Contact Dryvit to insure you have the most recent version.

APPROVED BY:	REV:	DATE:
PC	4	07/08



Outsulation® (NC)

Head/Sill

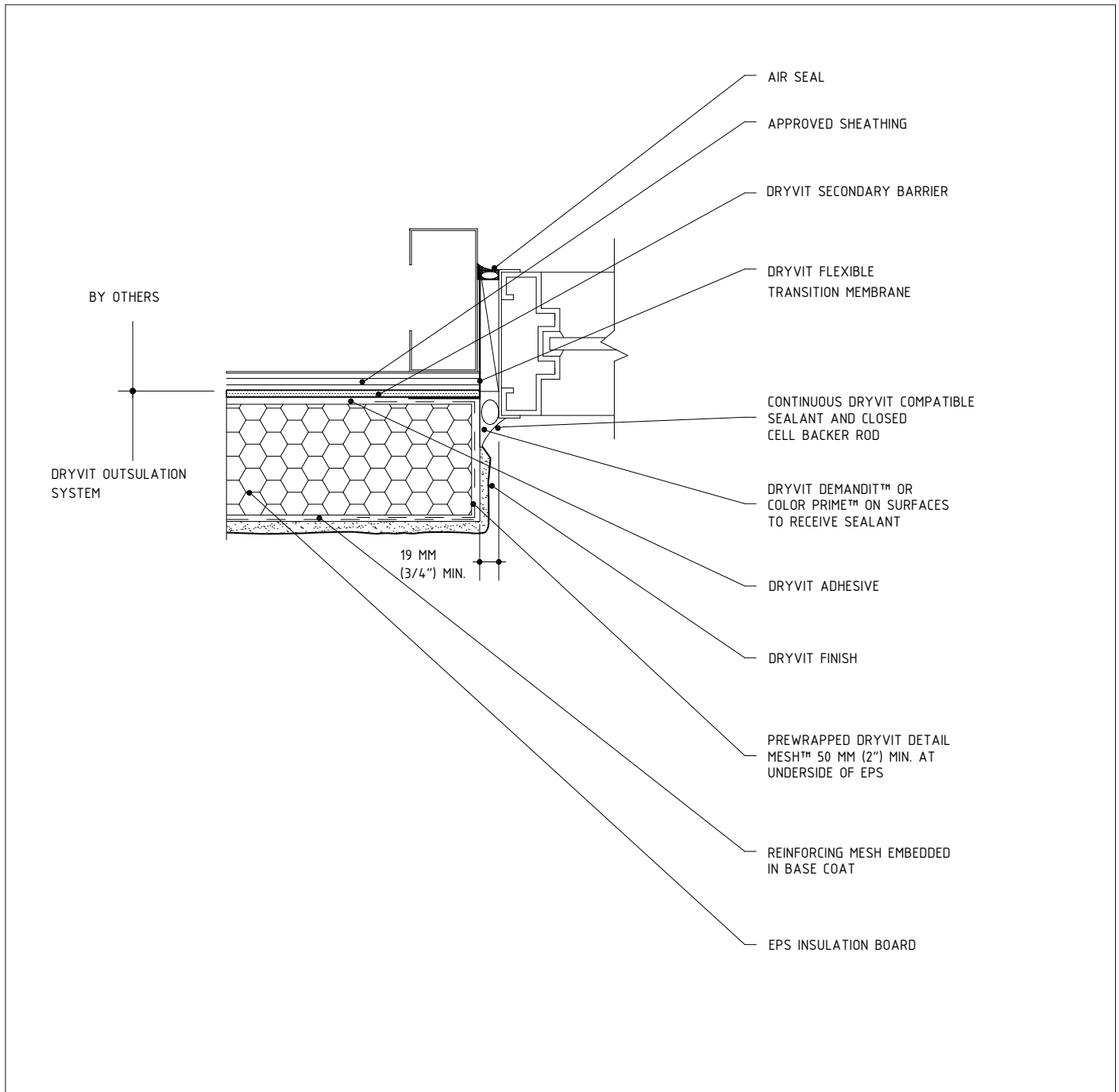
NOTE:

1. THESE DETAILS ARE MEANT TO APPLY TO BOTH OUTSULATION AND OUTSULATION NC. OUTSULATION NC REQUIRES THE USE OF PRIMUS® DM AS THE BASE COAT/ADHESIVE.

2. DRYVIT RECOMMENDS THAT GROUND FLOOR APPLICATIONS AND ALL FACADES EXPOSED TO ABNORMAL STRESS, HIGH TRAFFIC, OR DELIBERATE IMPACT HAVE THE BASE COAT REINFORCED WITH PANZER® 15 OR 20 MESH PRIOR TO STANDARD OR STANDARD PLUS MESH. LOCATION OF HIGH-IMPACT AREAS SHOULD BE INDICATED ON CONTRACT DRAWINGS.

The architecture, engineering and design of the project using the Dryvit products is the responsibility of the project's design professional. All systems must comply with local building codes and standards. This detail is for general information and guidance only and Dryvit specifically disclaims any liability for the use of this detail and for the architecture, design, engineering or workmanship of any project. The project design professional determines, in its sole discretion, whether this detail or a functionally equivalent alternative is best suited for the project. Use of a functionally equivalent detail does not violate Dryvit's warranty. This detail is subject to change without notice. Contact Dryvit to insure you have the most recent version.

APPROVED BY:	REV:	DATE:
PC	4	07/08



Outsulation® (NC)

Jamb

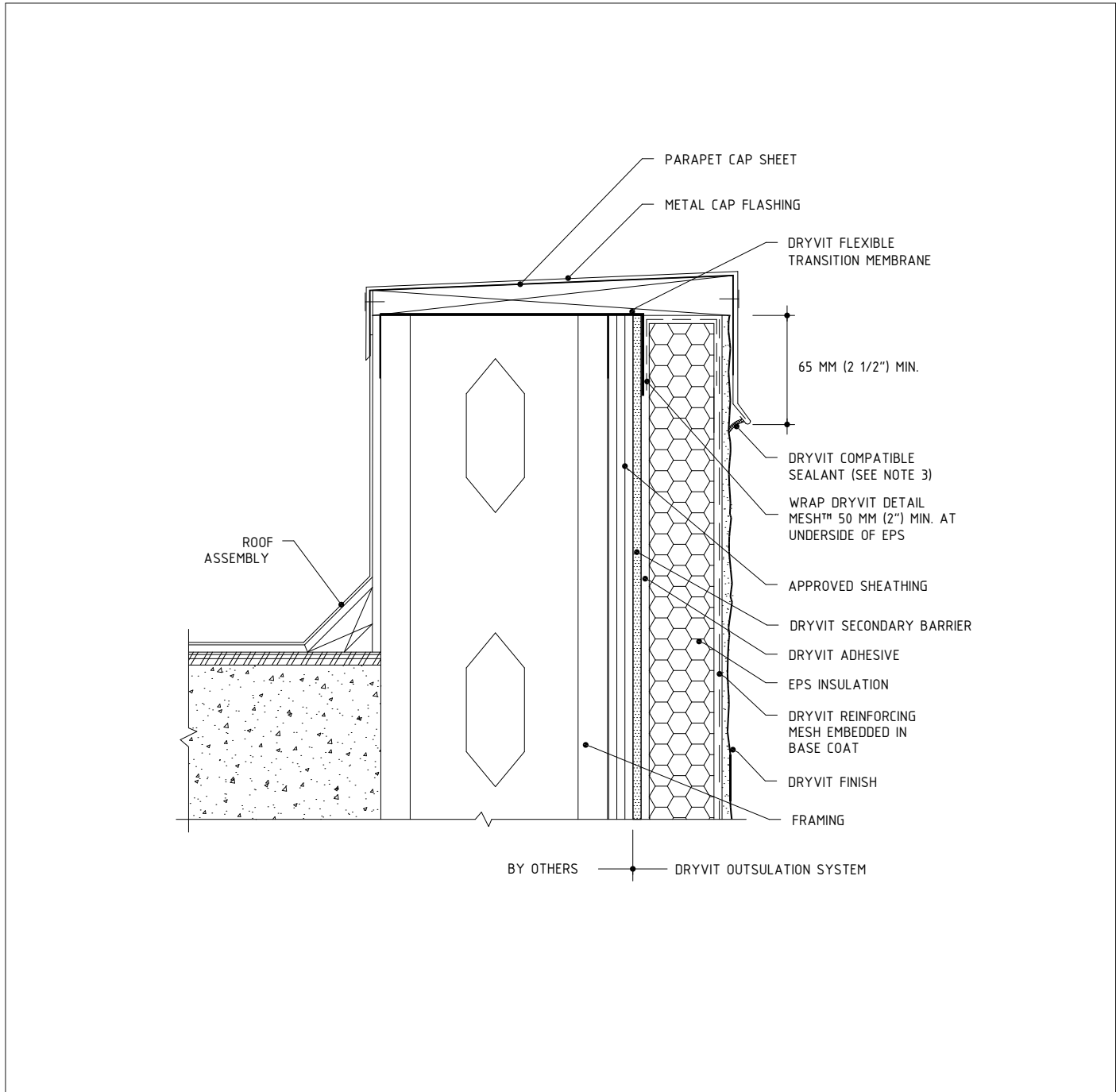
NOTE:

1. THESE DETAILS ARE MEANT TO APPLY TO BOTH OUTSULATION AND OUTSULATION NC. OUTSULATION NC REQUIRES THE USE OF PRIMUS® DM AS THE BASE COAT/ADHESIVE.

2. DRYVIT RECOMMENDS THAT GROUND FLOOR APPLICATIONS AND ALL FACADES EXPOSED TO ABNORMAL STRESS, HIGH TRAFFIC, OR DELIBERATE IMPACT HAVE THE BASE COAT REINFORCED WITH PANZER® 15 OR 20 MESH PRIOR TO STANDARD OR STANDARD PLUS MESH. LOCATION OF HIGH-IMPACT AREAS SHOULD BE INDICATED ON CONTRACT DRAWINGS.

The architecture, engineering and design of the project using the Dryvit products is the responsibility of the project's design professional. All systems must comply with local building codes and standards. This detail is for general information and guidance only and Dryvit specifically disclaims any liability for the use of this detail and for the architecture, design, engineering or workmanship of any project. The project design professional determines, in its sole discretion, whether this detail or a functionally equivalent alternative is best suited for the project. Use of a functionally equivalent detail does not violate Dryvit's warranty. This detail is subject to change without notice. Contact Dryvit to insure you have the most recent version.

APPROVED BY:	REV:	DATE:
PC	4	07/08



Outsulation® (NC)

Parapet - Cap Flashing

NOTE:

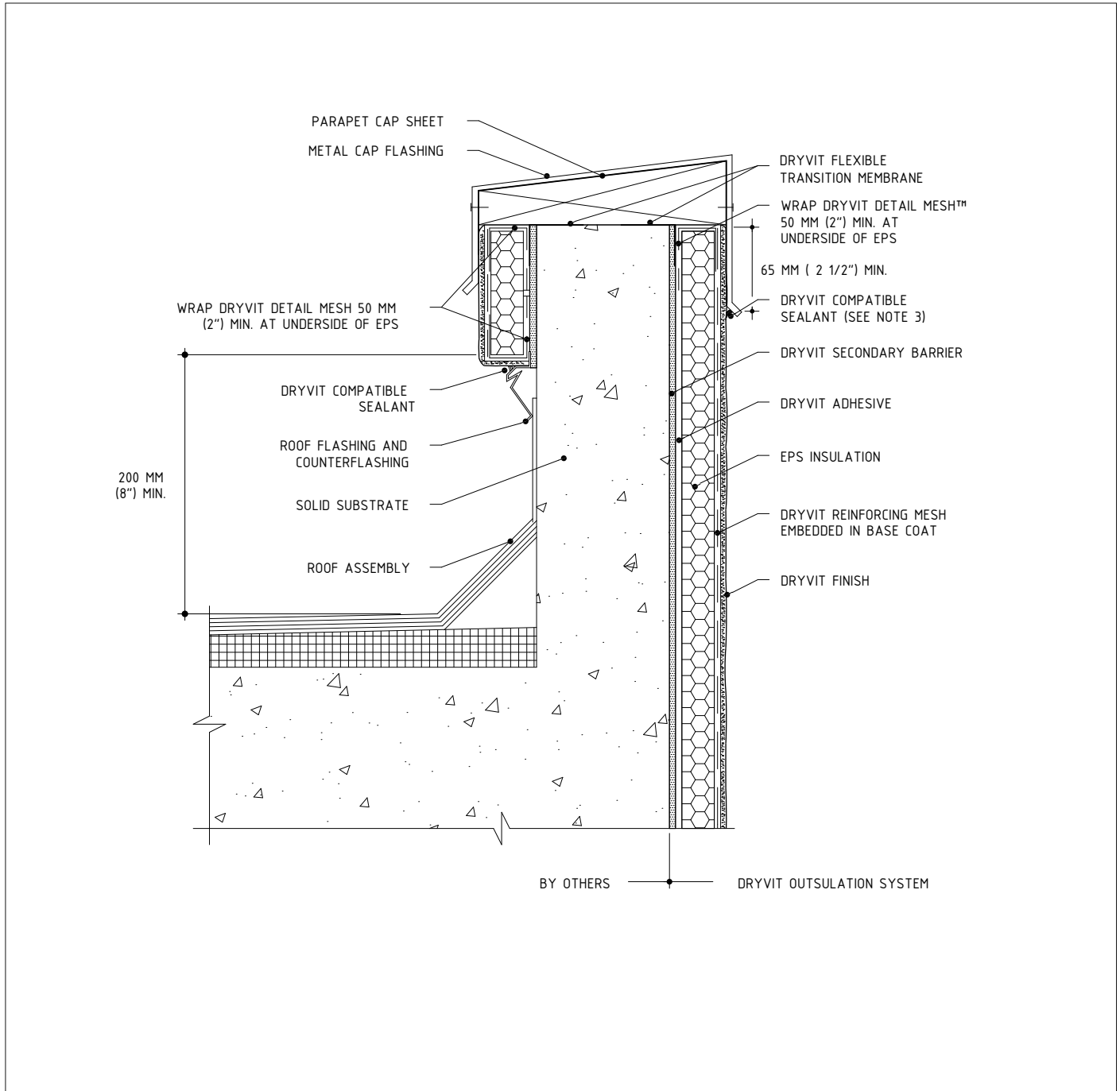
1. THESE DETAILS ARE MEANT TO APPLY TO BOTH OUTSULATION AND OUTSULATION NC. OUTSULATION NC REQUIRES THE USE OF PRIMUS® DM AS THE BASE COAT/ADHESIVE.
2. DRYVIT RECOMMENDS THAT GROUND FLOOR APPLICATIONS AND ALL FACADES EXPOSED TO ABNORMAL STRESS, HIGH TRAFFIC, OR DELIBERATE IMPACT HAVE THE BASE COAT REINFORCED WITH PANZER® 15 OR 20 MESH PRIOR TO STANDARD OR STANDARD PLUS MESH.

LOCATION OF HIGH IMPACT ZONES SHOULD BE INDICATED ON CONTRACT DRAWINGS.

3. ENSURE PARAPET CAPPING IS WATER TIGHT IF SEALANT IS TO BE APPLIED HERE. OTHERWISE EXTEND CAPPING OVERLAP AS REQUIRED TO AVOID MOISTURE MIGRATION BEHIND SYSTEM.

The architecture, engineering and design of the project using the Dryvit products is the responsibility of the project's design professional. All systems must comply with local building codes and standards. This detail is for general information and guidance only and Dryvit specifically disclaims any liability for the use of this detail and for the architecture, design, engineering or workmanship of any project. The project design professional determines, in its sole discretion, whether this detail or a functionally equivalent alternative is best suited for the project. Use of a functionally equivalent detail does not violate Dryvit's warranty. This detail is subject to change without notice. Contact Dryvit to insure you have the most recent version.

APPROVED BY:	REV:	DATE:
PC	4	07/08



Outsulation® (NC)

Parapet - Solid Substrate

NOTE:

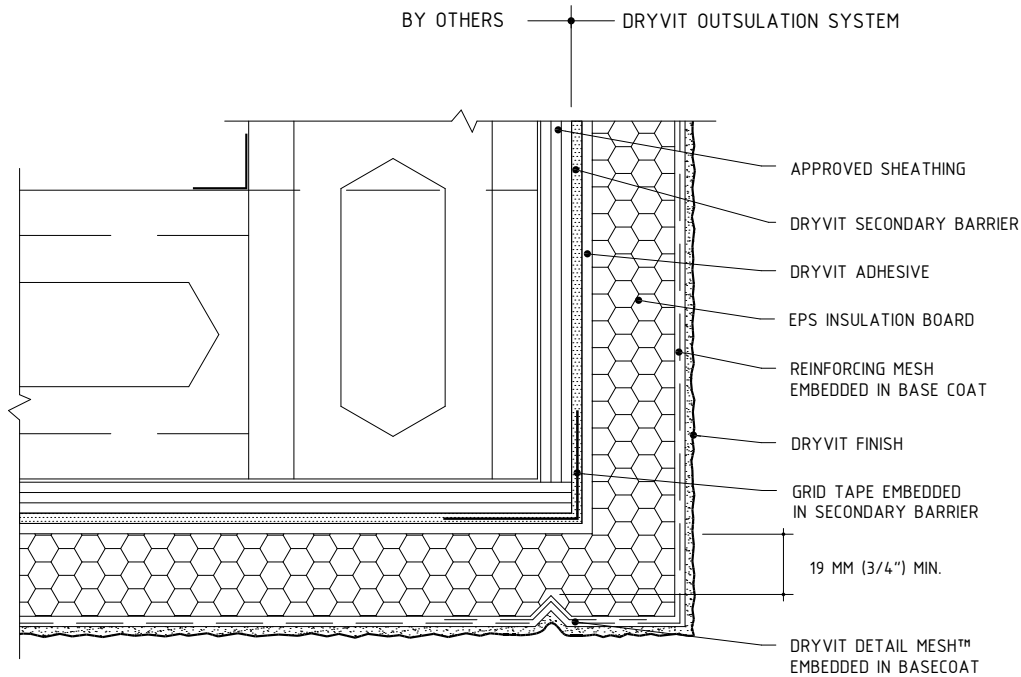
1. THESE DETAILS ARE MEANT TO APPLY TO BOTH OUTSULATION AND OUTSULATION NC. OUTSULATION NC REQUIRES THE USE OF PRIMUS® DM AS THE BASE COAT/ADHESIVE.
2. DRYVIT RECOMMENDS THAT GROUND FLOOR APPLICATIONS AND ALL FACADES EXPOSED TO ABNORMAL STRESS, HIGH TRAFFIC, OR DELIBERATE IMPACT HAVE THE BASE COAT REINFORCED WITH PANZER® 15 OR 20 MESH PRIOR TO STANDARD OR STANDARD PLUS MESH.

LOCATION OF HIGH IMPACT ZONES SHOULD BE INDICATED ON CONTRACT DRAWINGS.

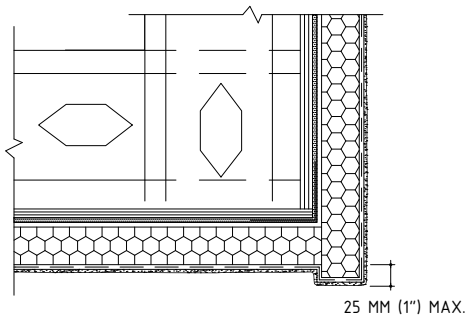
3. ENSURE PARAPET CAPPING IS WATER TIGHT IF SEALANT IS TO BE APPLIED HERE. OTHERWISE EXTEND CAPPING OVERLAP AS REQUIRED TO AVOID MOISTURE MIGRATION BEHIND SYSTEM.

The architecture, engineering and design of the project using the Dryvit products is the responsibility of the project's design professional. All systems must comply with local building codes and standards. This detail is for general information and guidance only and Dryvit specifically disclaims any liability for the use of this detail and for the architecture, design, engineering or workmanship of any project. The project design professional determines, in its sole discretion, whether this detail or a functionally equivalent alternative is best suited for the project. Use of a functionally equivalent detail does not violate Dryvit's warranty. This detail is subject to change without notice. Contact Dryvit to insure you have the most recent version.

APPROVED BY:	REV:	DATE:
PC	4	07/08



OPTIONAL
Soffit With Drip



Outsulation[®] (NC)

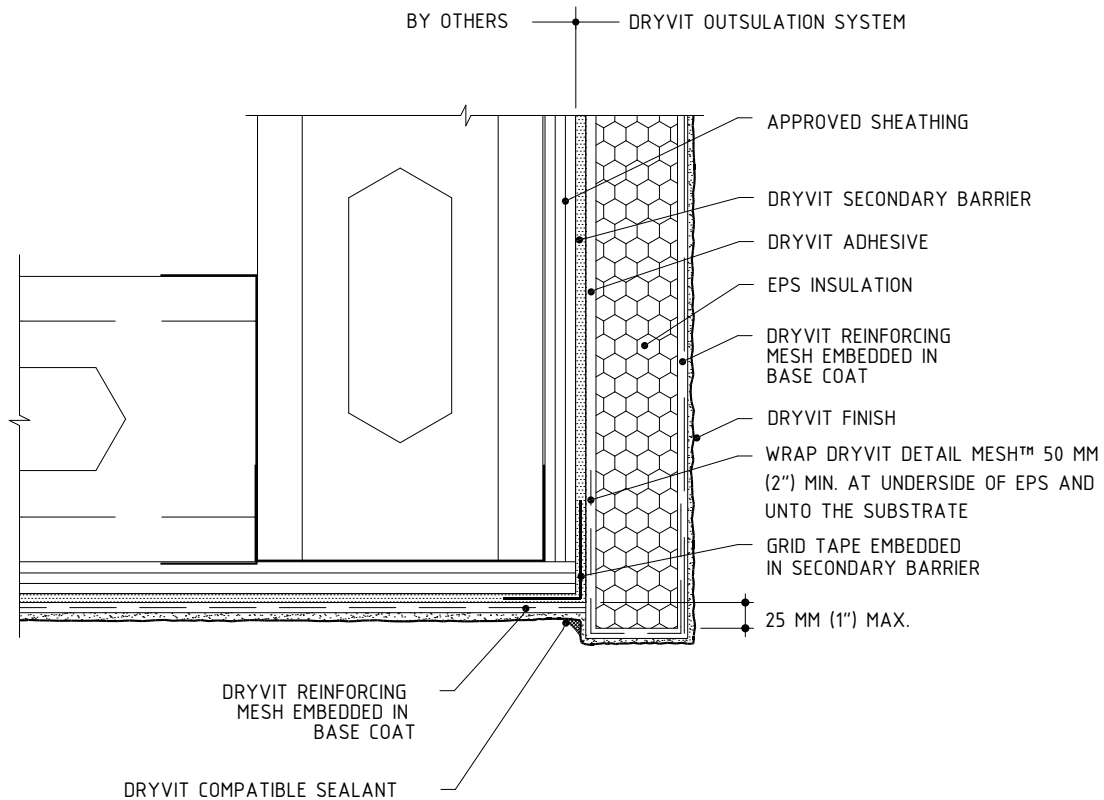
Soffit/Fascia Intersection

NOTE:

1. THESE DETAILS ARE MEANT TO APPLY TO BOTH OUTSULATION AND OUTSULATION NC. OUTSULATION NC REQUIRES THE USE OF PRIMUS[®] DM AS THE BASE COAT/ADHESIVE.
2. DRYVIT RECOMMENDS THAT GROUND FLOOR APPLICATIONS AND ALL FACADES EXPOSED TO ABNORMAL STRESS, HIGH TRAFFIC, OR DELIBERATE IMPACT HAVE THE BASE COAT REINFORCED WITH PANZER[®] MESH PRIOR TO STANDARD OR STANDARD PLUS MESH. LOCATION OF HIGH IMPACT ZONES SHOULD BE INDICATED ON CONTRACT DRAWINGS.

The architecture, engineering and design of the project using the Dryvit products is the responsibility of the project's design professional. All systems must comply with local building codes and standards. This detail is for general information and guidance only and Dryvit specifically disclaims any liability for the use of this detail and for the architecture, design, engineering or workmanship of any project. The project design professional determines, in its sole discretion, whether this detail or a functionally equivalent alternative is best suited for the project. Use of a functionally equivalent detail does not violate Dryvit's warranty. This detail is subject to change without notice. Contact Dryvit to insure you have the most recent version.

APPROVED BY:	REV:	DATE:
PC	4	07/08



Outsulation® (NC)

Soffit - Uninsulated

NOTE:

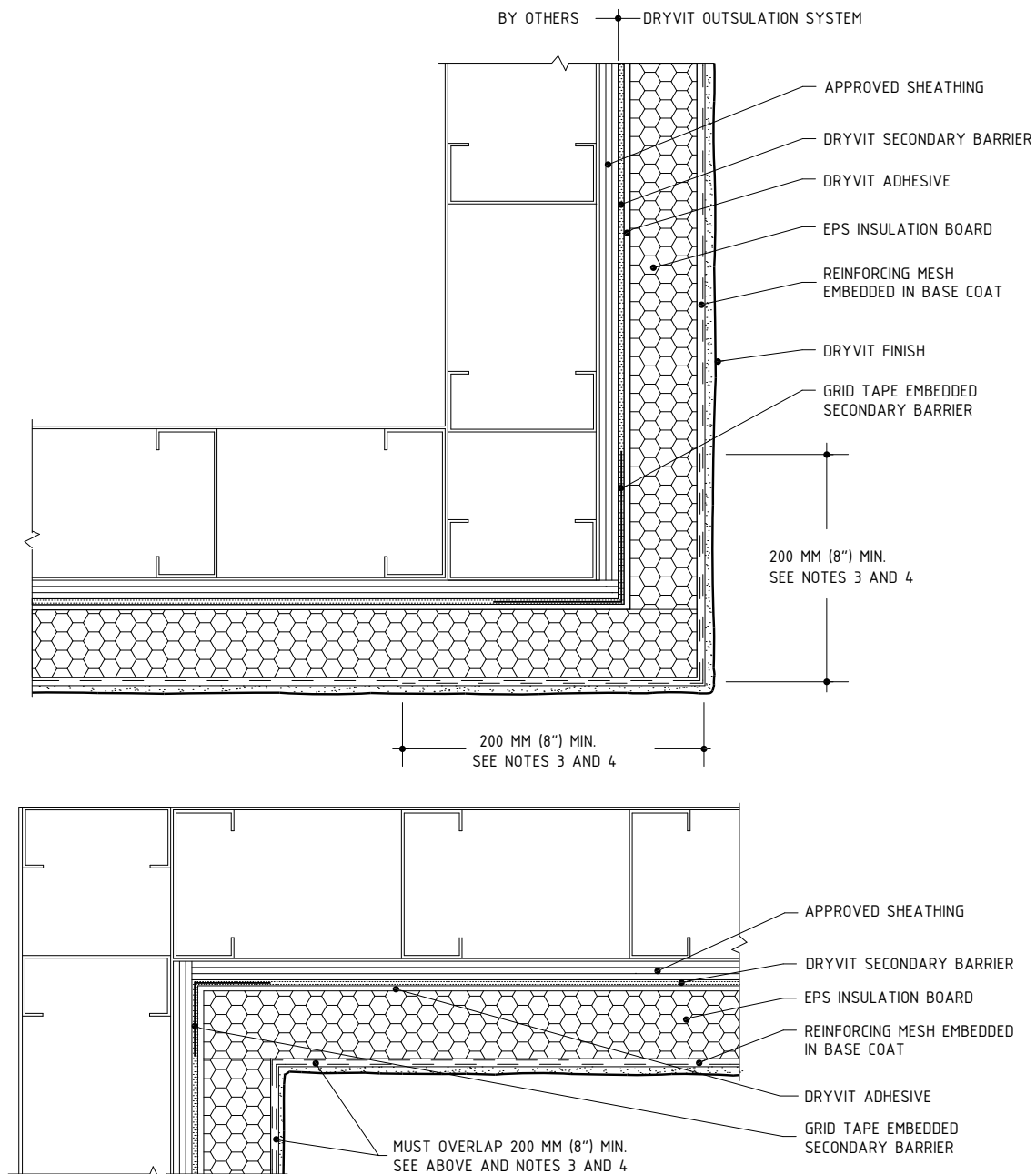
1. THESE DETAILS ARE MEANT TO APPLY TO BOTH OUTSULATION AND OUTSULATION NC. OUTSULATION NC REQUIRES THE USE OF PRIMUS® DM AS THE BASE COAT/ADHESIVE.
2. DRYVIT RECOMMENDS THAT GROUND FLOOR APPLICATIONS AND ALL FACADES EXPOSED TO ABNORMAL STRESS, HIGH TRAFFIC, OR DELIBERATE IMPACT HAVE THE BASE COAT REINFORCED WITH PANZER® 15 OR 20 MESH PRIOR TO STANDARD OR STANDARD PLUS MESH.

LOCATION OF HIGH-IMPACT AREAS SHOULD BE INDICATED ON CONTRACT DRAWINGS.

3. SOFFITS WITHOUT EPS INSULATION REQUIRE EXPANSION JOINTS EVERY 6 M (20 FT).
4. REFER TO DRYVIT APPLICATION BULLETIN NO. 93-2 FOR SPECIFIC REQUIREMENTS FOR SOFFIT AREAS.

The architecture, engineering and design of the project using the Dryvit products is the responsibility of the project's design professional. All systems must comply with local building codes and standards. This detail is for general information and guidance only and Dryvit specifically disclaims any liability for the use of this detail and for the architecture, design, engineering or workmanship of any project. The project design professional determines, in its sole discretion, whether this detail or a functionally equivalent alternative is best suited for the project. Use of a functionally equivalent detail does not violate Dryvit's warranty. This detail is subject to change without notice. Contact Dryvit to insure you have the most recent version.

APPROVED BY:	REV:	DATE:
PC	4	07/08



Outsulation[®] (NC)

Inside/Outside Corners

NOTE:

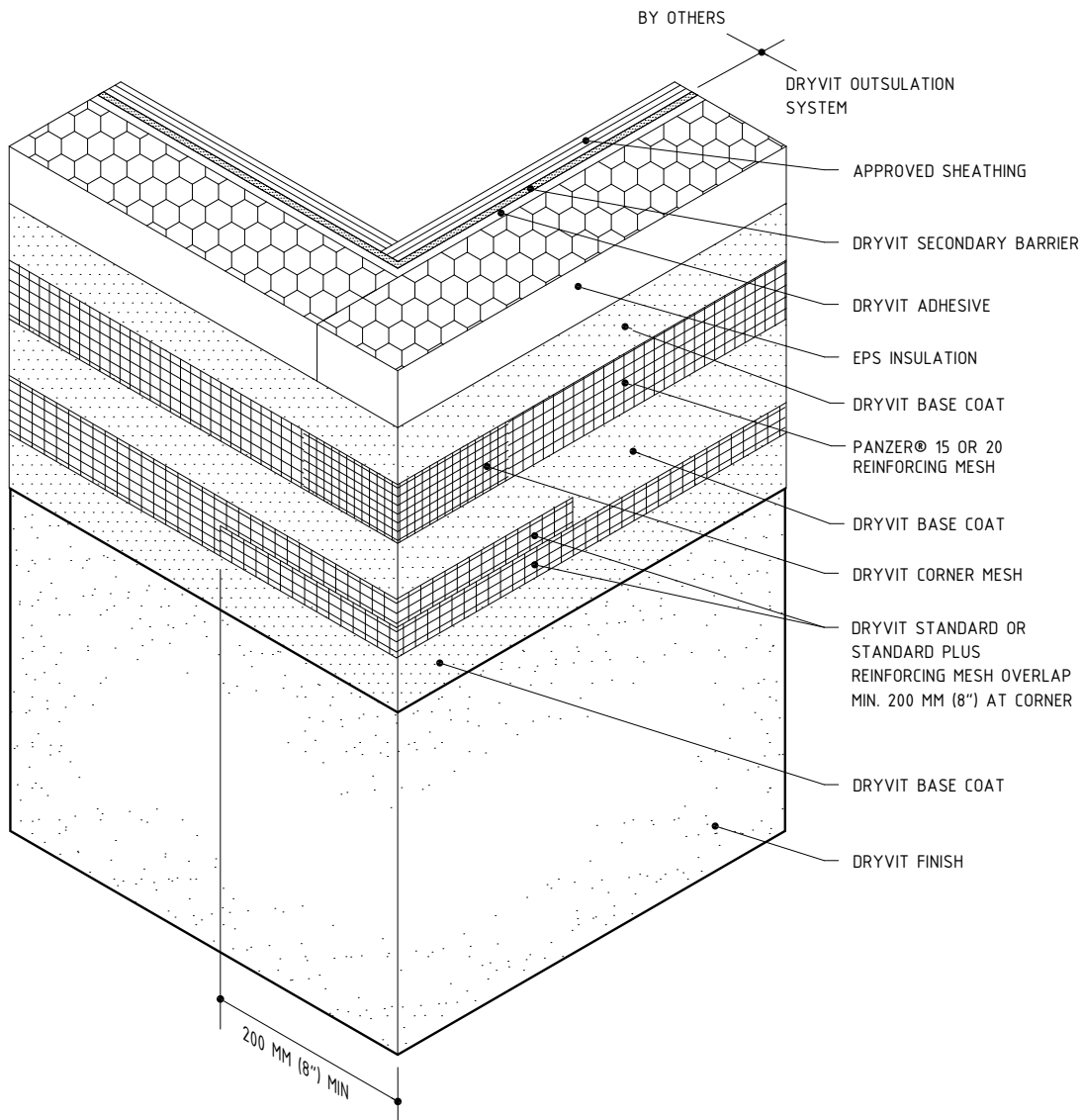
1. THESE DETAILS ARE MEANT TO APPLY TO BOTH OUTSULATION AND OUTSULATION NC. OUTSULATION NC REQUIRES THE USE OF PRIMUS[®] DM AS THE BASE COAT/ADHESIVE.
2. DRYVIT RECOMMENDS THAT GROUND FLOOR APPLICATIONS AND ALL FACADES EXPOSED TO ABNORMAL STRESS, HIGH TRAFFIC, OR DELIBERATE IMPACT HAVE THE BASE COAT REINFORCED WITH PANZER[®] 15 OR 20 MESH PRIOR TO STANDARD OR STANDARD PLUS MESH.

LOCATION OF HIGH IMPACT ZONES SHOULD BE INDICATED ON CONTRACT DRAWINGS.

3. DOUBLE WRAP OUTSIDE CORNERS WITH REINFORCING MESH OR USE CORNER MESH.
4. DO NOT LAP REINFORCING MESH WITHIN 200MM (8") OF A CORNER.

The architecture, engineering and design of the project using the Dryvit products is the responsibility of the project's design professional. All systems must comply with local building codes and standards. This detail is for general information and guidance only and Dryvit specifically disclaims any liability for the use of this detail and for the architecture, design, engineering or workmanship of any project. The project design professional determines, in its sole discretion, whether this detail or a functionally equivalent alternative is best suited for the project. Use of a functionally equivalent detail does not violate Dryvit's warranty. This detail is subject to change without notice. Contact Dryvit to insure you have the most recent version.

APPROVED BY:	REV:	DATE:
PC	4	07/08



Outsulation® (NC)

Outside Corner - High Impact

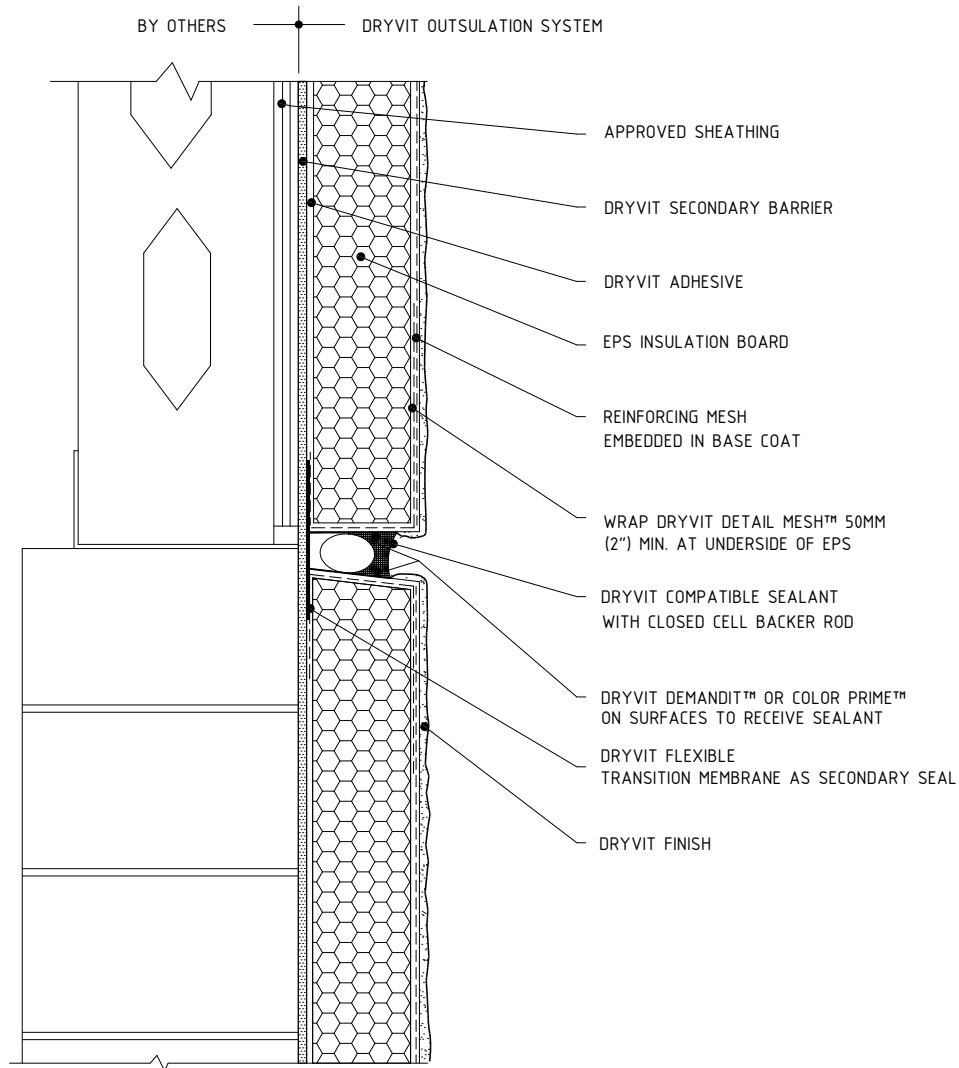
NOTE:

1. THESE DETAILS ARE MEANT TO APPLY TO BOTH OUTSULATION AND OUTSULATION NC. OUTSULATION NC REQUIRES THE USE OF PRIMUS® DM AS THE BASE COAT/ADHESIVE.

2. DRYVIT RECOMMENDS THAT GROUND FLOOR APPLICATIONS AND ALL FACADES EXPOSED TO ABNORMAL STRESS, HIGH TRAFFIC, OR DELIBERATE IMPACT HAVE THE BASE COAT REINFORCED WITH PANZER® 15 OR 20 MESH PRIOR TO STANDARD OR STANDARD PLUS MESH. LOCATION OF HIGH-IMPACT AREAS SHOULD BE INDICATED ON CONTRACT DRAWINGS.

The architecture, engineering and design of the project using the Dryvit products is the responsibility of the project's design professional. All systems must comply with local building codes and standards. This detail is for general information and guidance only and Dryvit specifically disclaims any liability for the use of this detail and for the architecture, design, engineering or workmanship of any project. The project design professional determines, in its sole discretion, whether this detail or a functionally equivalent alternative is best suited for the project. Use of a functionally equivalent detail does not violate Dryvit's warranty. This detail is subject to change without notice. Contact Dryvit to insure you have the most recent version.

APPROVED BY:	REV:	DATE:
PC	4	07/08



Outsulation® (NC)

Horizontal Expansion Joint

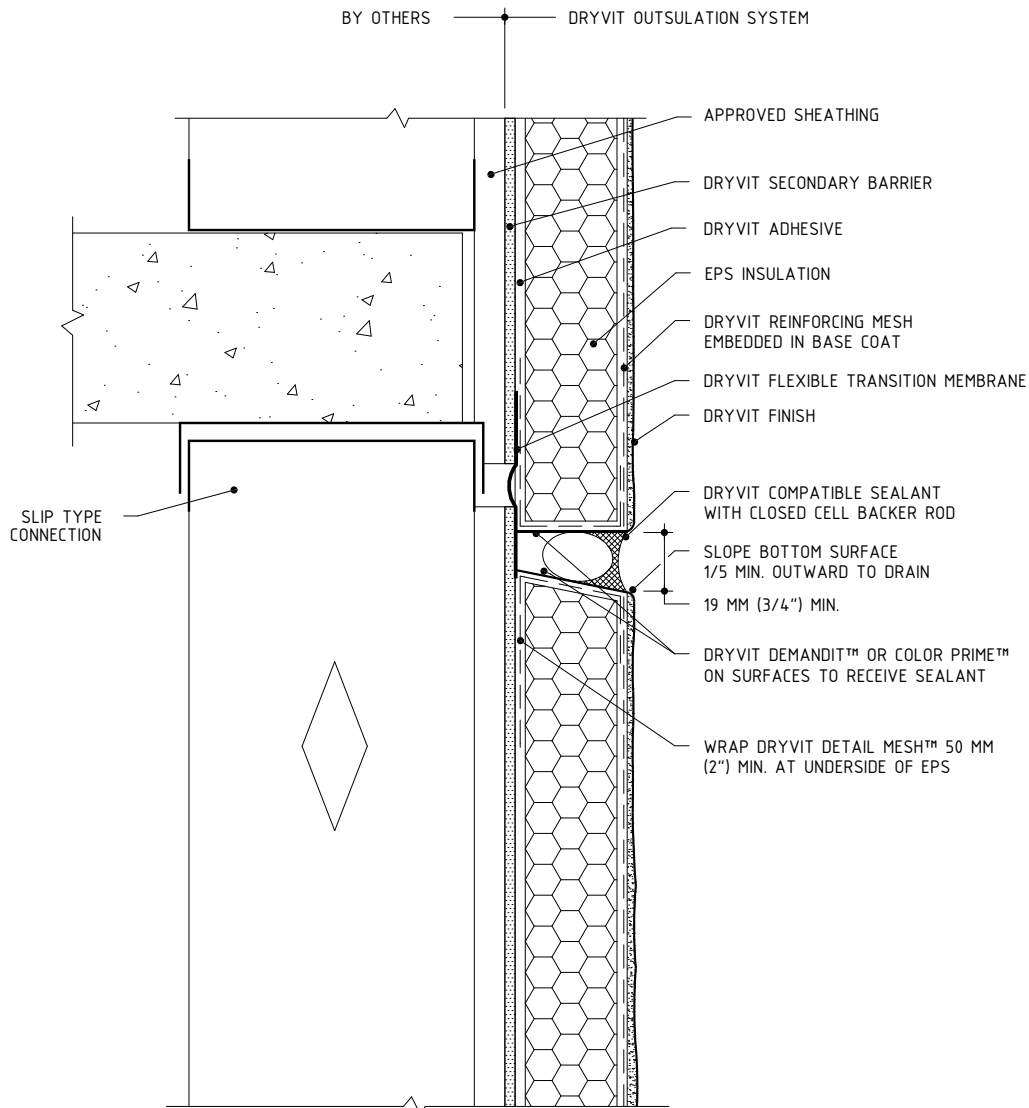
NOTE:

1. THESE DETAILS ARE MEANT TO APPLY TO BOTH OUTSULATION AND OUTSULATION NC. OUTSULATION NC REQUIRES THE USE OF PRIMUS® DM AS THE BASE COAT/ADHESIVE.

2. DRYVIT RECOMMENDS THAT GROUND FLOOR APPLICATIONS AND ALL FACADES EXPOSED TO ABNORMAL STRESS, HIGH TRAFFIC, OR DELIBERATE IMPACT HAVE THE BASE COAT REINFORCED WITH PANZER® 15 OR 20 MESH PRIOR TO STANDARD OR STANDARD PLUS MESH. LOCATION OF HIGH-IMPACT AREAS SHOULD BE INDICATED ON CONTRACT DRAWINGS.

The architecture, engineering and design of the project using the Dryvit products is the responsibility of the project's design professional. All systems must comply with local building codes and standards. This detail is for general information and guidance only and Dryvit specifically disclaims any liability for the use of this detail and for the architecture, design, engineering or workmanship of any project. The project design professional determines, in its sole discretion, whether this detail or a functionally equivalent alternative is best suited for the project. Use of a functionally equivalent detail does not violate Dryvit's warranty. This detail is subject to change without notice. Contact Dryvit to insure you have the most recent version.

APPROVED BY:	REV:	DATE:
PC	4	07/08



Outsulation® (NC)

Expansion Joint At Floor Line

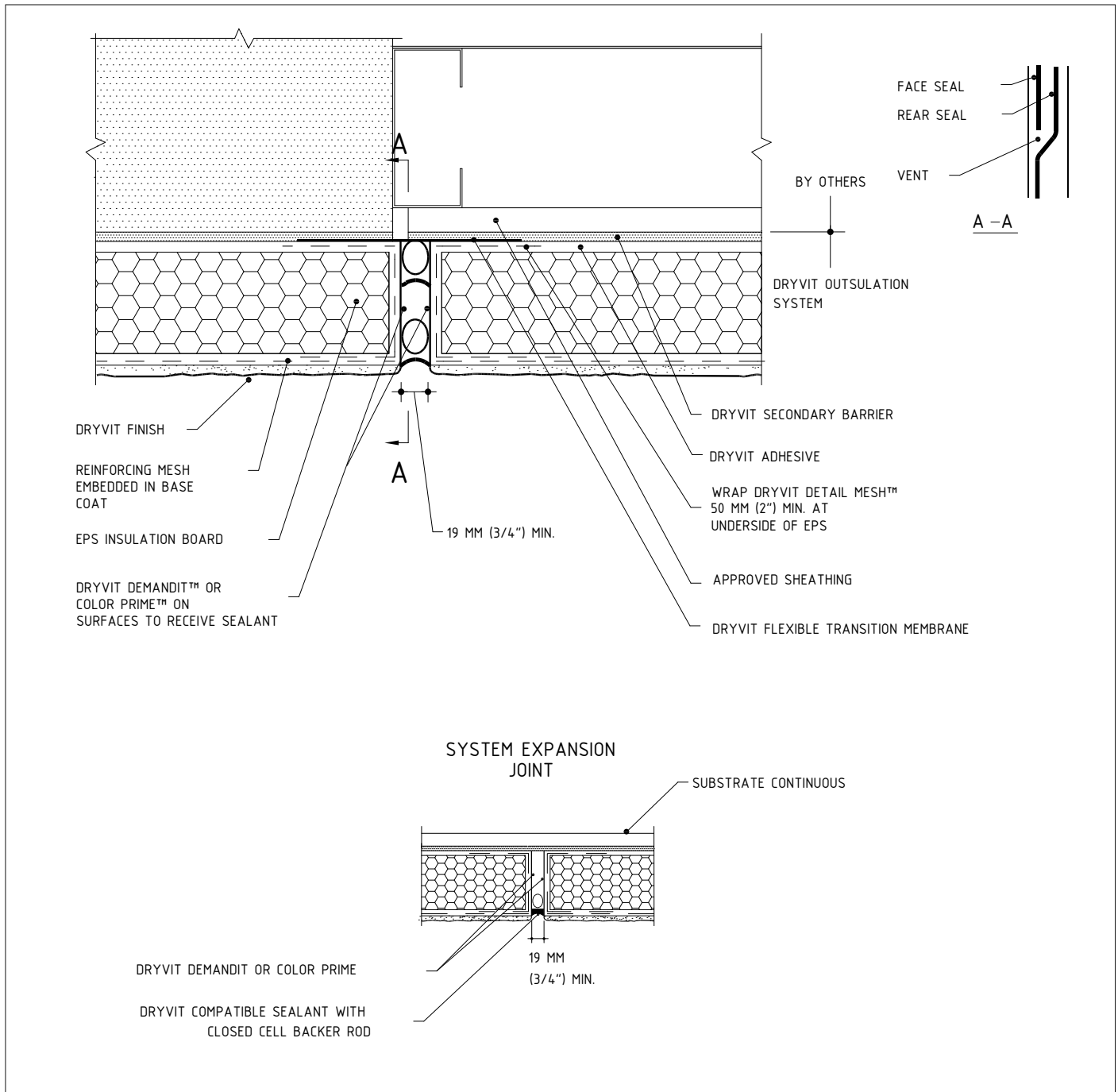
NOTE:

1. THESE DETAILS ARE MEANT TO APPLY TO BOTH OUTSULATION AND OUTSULATION NC. OUTSULATION NC REQUIRES THE USE OF PRIMUS® DM AS THE BASE COAT/ADHESIVE.
2. DRYVIT RECOMMENDS THAT GROUND FLOOR APPLICATIONS AND ALL FACADES EXPOSED TO ABNORMAL STRESS, HIGH TRAFFIC, OR DELIBERATE IMPACT HAVE THE BASE COAT REINFORCED WITH PANZER® 15 OR 20 MESH PRIOR TO STANDARD OR STANDARD PLUS MESH.
3. EXPANSION JOINT IN THE OUTSULATION SYSTEM IS NECESSARY WHERE SIGNIFICANT DIFFERENTIAL MOVEMENT IS EXPECTED AT FLOOR LINES.
4. LOCATE EXTERNAL SEALANT JOINT WITHIN 50 MM (2") OF BREAK IN SHEATHING.

LOCATION OF HIGH IMPACT ZONES SHOULD BE INDICATED ON CONTRACT DRAWINGS.

The architecture, engineering and design of the project using the Dryvit products is the responsibility of the project's design professional. All systems must comply with local building codes and standards. This detail is for general information and guidance only and Dryvit specifically disclaims any liability for the use of this detail and for the architecture, design, engineering or workmanship of any project. The project design professional determines, in its sole discretion, whether this detail or a functionally equivalent alternative is best suited for the project. Use of a functionally equivalent detail does not violate Dryvit's warranty. This detail is subject to change without notice. Contact Dryvit to insure you have the most recent version.

APPROVED BY:	REV:	DATE:
PC	4	07/08



Outsulation® (NC)

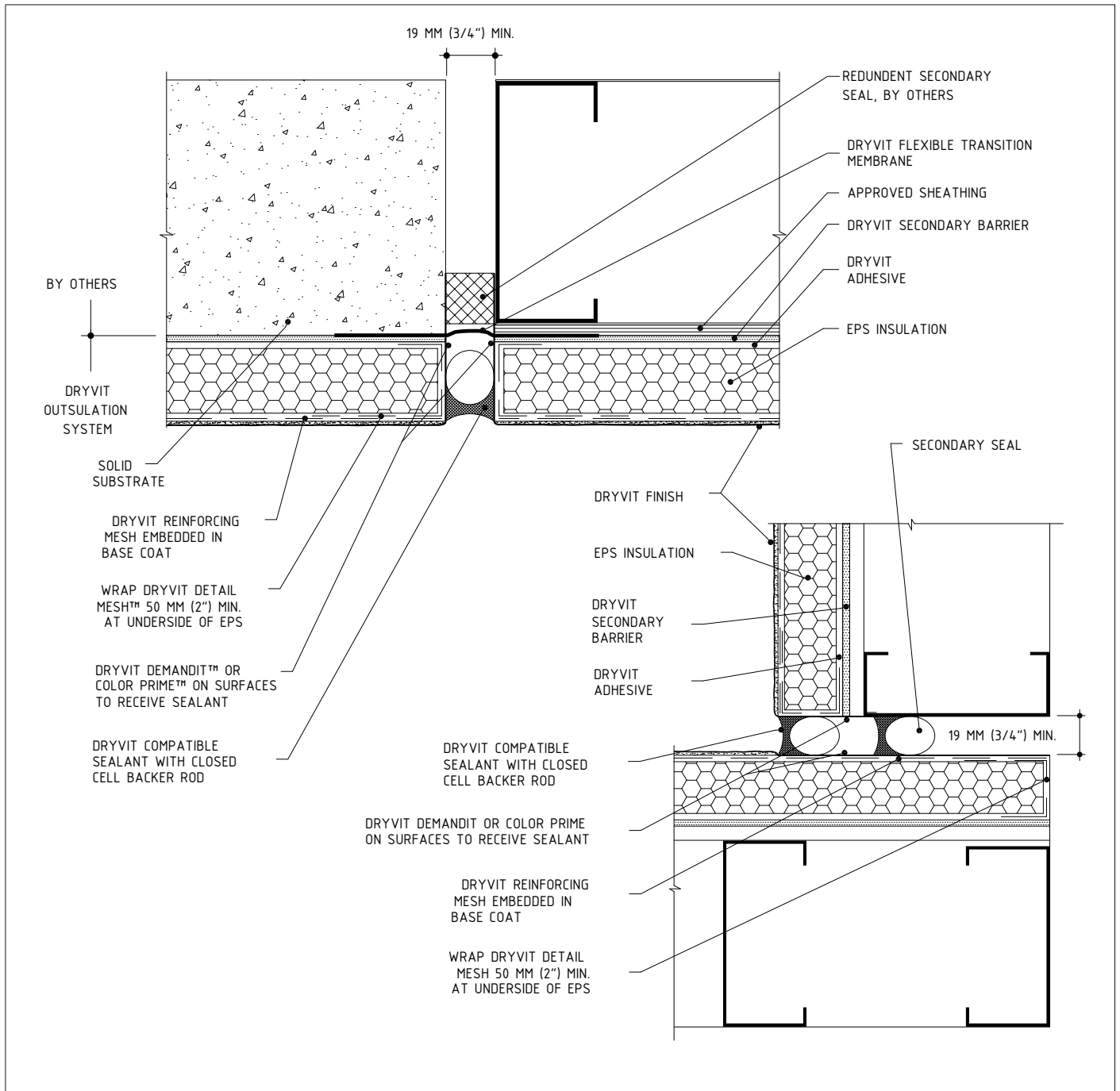
Expansion Joint Options

NOTE:

1. THESE DETAILS ARE MEANT TO APPLY TO BOTH OUTSULATION AND OUTSULATION NC. OUTSULATION NC REQUIRES THE USE OF PRIMUS® DM AS THE BASE COAT/ADHESIVE.
2. DRYVIT RECOMMENDS THAT GROUND FLOOR APPLICATIONS AND ALL FACADES EXPOSED TO ABNORMAL STRESS, HIGH TRAFFIC, OR DELIBERATE IMPACT HAVE THE BASE COAT REINFORCED WITH PANZER® 15 OR 20 MESH PRIOR TO STANDARD OR STANDARD PLUS MESH. LOCATION OF HIGH-IMPACT AREAS SHOULD BE INDICATED ON CONTRACT DRAWINGS.

The architecture, engineering and design of the project using the Dryvit products is the responsibility of the project's design professional. All systems must comply with local building codes and standards. This detail is for general information and guidance only and Dryvit specifically disclaims any liability for the use of this detail and for the architecture, design, engineering or workmanship of any project. The project design professional determines, in its sole discretion, whether this detail or a functionally equivalent alternative is best suited for the project. Use of a functionally equivalent detail does not violate Dryvit's warranty. This detail is subject to change without notice. Contact Dryvit to insure you have the most recent version.

APPROVED BY:	REV:	DATE:
PC	4	07/08



Outsulation® (NC)

Structural Expansion Joints

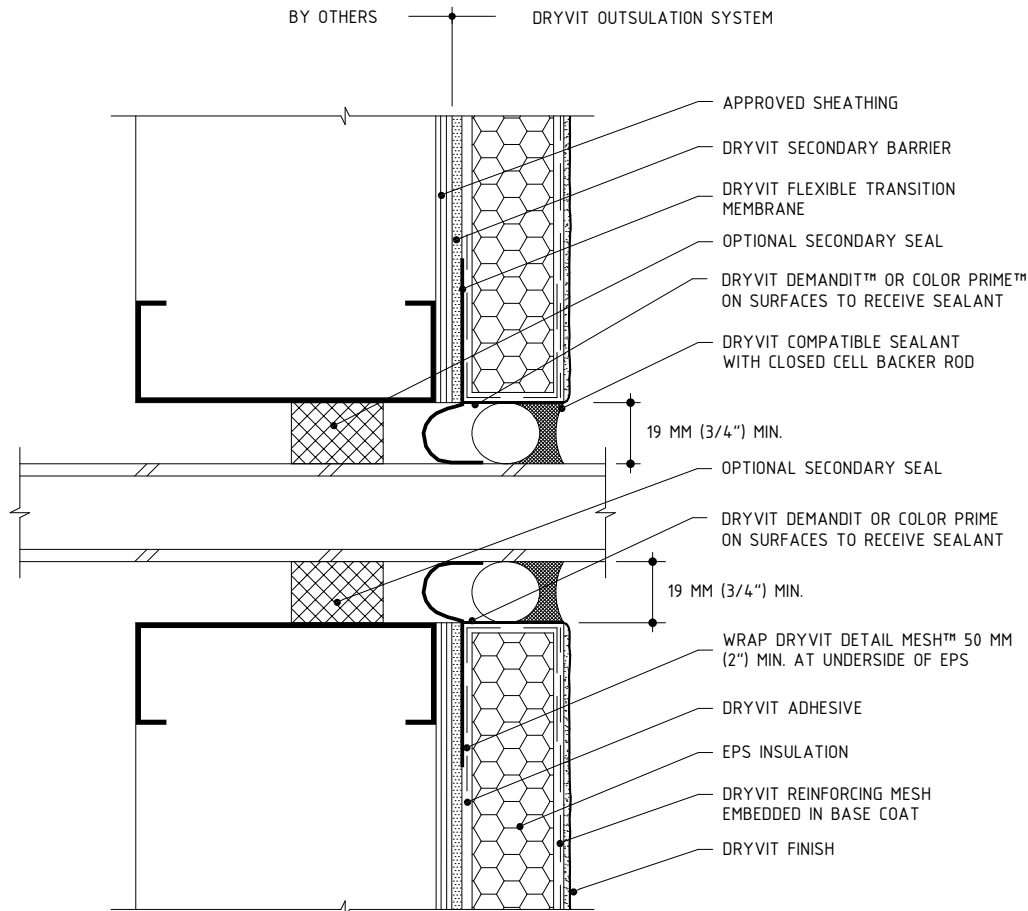
NOTE:

1. THESE DETAILS ARE MEANT TO APPLY TO BOTH OUTSULATION AND OUTSULATION NC. OUTSULATION NC REQUIRES THE USE OF PRIMUS® DM AS THE BASE COAT/ADHESIVE.

2. DRYVIT RECOMMENDS THAT GROUND FLOOR APPLICATIONS AND ALL FACADES EXPOSED TO ABNORMAL STRESS, HIGH TRAFFIC, OR DELIBERATE IMPACT HAVE THE BASE COAT REINFORCED WITH PANZER® 15 OR 20 MESH PRIOR TO STANDARD OR STANDARD PLUS MESH. LOCATION OF HIGH-IMPACT AREAS SHOULD BE INDICATED ON CONTRACT DRAWINGS.

The architecture, engineering and design of the project using the Dryvit products is the responsibility of the project's design professional. All systems must comply with local building codes and standards. This detail is for general information and guidance only and Dryvit specifically disclaims any liability for the use of this detail and for the architecture, design, engineering or workmanship of any project. The project design professional determines, in its sole discretion, whether this detail or a functionally equivalent alternative is best suited for the project. Use of a functionally equivalent detail does not violate Dryvit's warranty. This detail is subject to change without notice. Contact Dryvit to insure you have the most recent version.

APPROVED BY:	REV:	DATE:
PC	4	07/08



Outsulation® (NC)

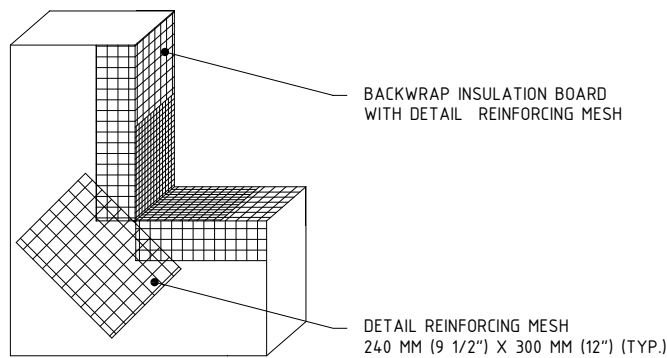
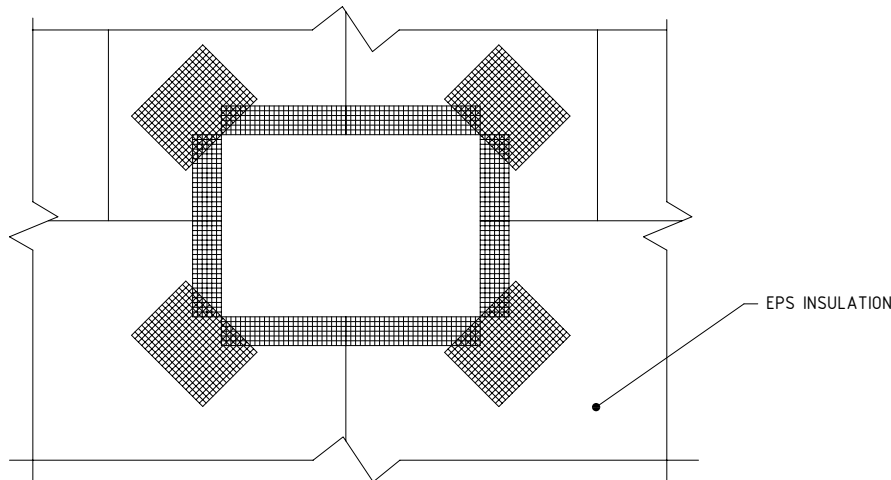
Penetrations

NOTE:

1. THESE DETAILS ARE MEANT TO APPLY TO BOTH OUTSULATION AND OUTSULATION NC. OUTSULATION NC REQUIRES THE USE OF PRIMUS® DM AS THE BASE COAT/ADHESIVE.
2. DRYVIT RECOMMENDS THAT GROUND FLOOR APPLICATIONS AND ALL FACADES EXPOSED TO ABNORMAL STRESS, HIGH TRAFFIC, OR DELIBERATE IMPACT HAVE THE BASE COAT REINFORCED WITH PANZER® 15 OR 20 MESH PRIOR TO STANDARD OR STANDARD PLUS MESH. LOCATION OF HIGH-IMPACT AREAS SHOULD BE INDICATED ON CONTRACT DRAWINGS.

The architecture, engineering and design of the project using the Dryvit products is the responsibility of the project's design professional. All systems must comply with local building codes and standards. This detail is for general information and guidance only and Dryvit specifically disclaims any liability for the use of this detail and for the architecture, design, engineering or workmanship of any project. The project design professional determines, in its sole discretion, whether this detail or a functionally equivalent alternative is best suited for the project. Use of a functionally equivalent detail does not violate Dryvit's warranty. This detail is subject to change without notice. Contact Dryvit to insure you have the most recent version.

APPROVED BY:	REV:	DATE:
PC	4	07/08



Outsulation[®] (NC)

Wall Penetrations

NOTE:

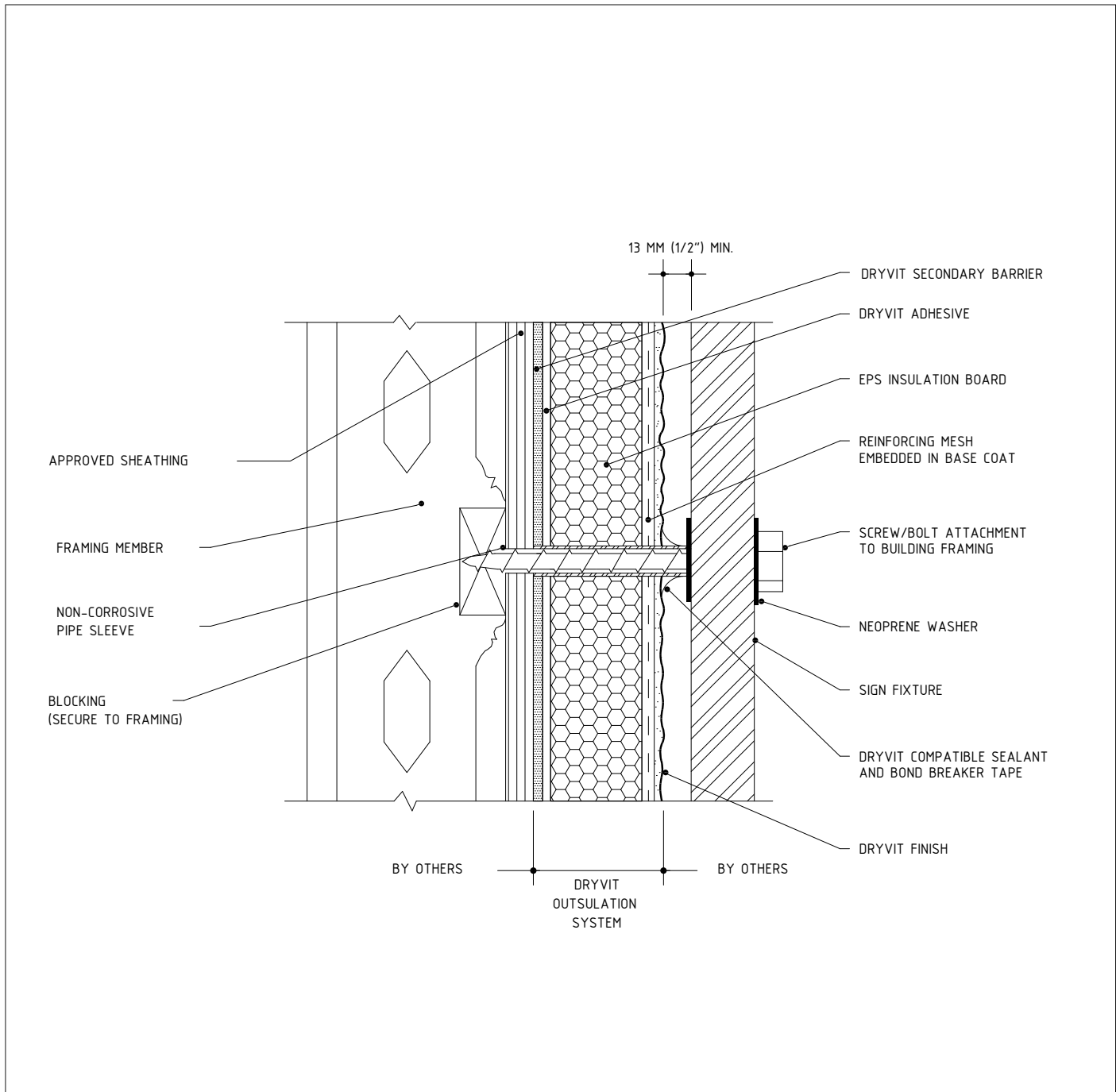
1. THESE DETAILS ARE MEANT TO APPLY TO BOTH OUTSULATION AND OUTSULATION NC. OUTSULATION NC REQUIRES THE USE OF PRIMUS[®] DM AS THE BASE COAT/ADHESIVE.
2. DRYVIT RECOMMENDS THAT GROUND FLOOR APPLICATIONS AND ALL FACADES EXPOSED TO ABNORMAL STRESS, HIGH TRAFFIC, OR DELIBERATE IMPACT HAVE THE BASE COAT REINFORCED WITH PANZER[®] 15 OR 20 MESH PRIOR TO STANDARD OR STANDARD PLUS MESH.

LOCATION OF HIGH IMPACT ZONES SHOULD BE INDICATED ON CONTRACT DRAWINGS.

3. LOCATE INSULATION BOARDS SUCH THAT BOARD EDGES DO NOT ALIGN WITH CORNERS OF PENETRATION.
4. APPLY A PIECE OF 240MM (9 1/2") X 300MM (12") DETAIL REINFORCING MESH DIAGONALLY AT EACH CORNER.

The architecture, engineering and design of the project using the Dryvit products is the responsibility of the project's design professional. All systems must comply with local building codes and standards. This detail is for general information and guidance only and Dryvit specifically disclaims any liability for the use of this detail and for the architecture, design, engineering or workmanship of any project. The project design professional determines, in its sole discretion, whether this detail or a functionally equivalent alternative is best suited for the project. Use of a functionally equivalent detail does not violate Dryvit's warranty. This detail is subject to change without notice. Contact Dryvit to insure you have the most recent version.

APPROVED BY:	REV:	DATE:
PC	4	07/08



Outsulation[®] (NC)

Sign Attachment

NOTE:

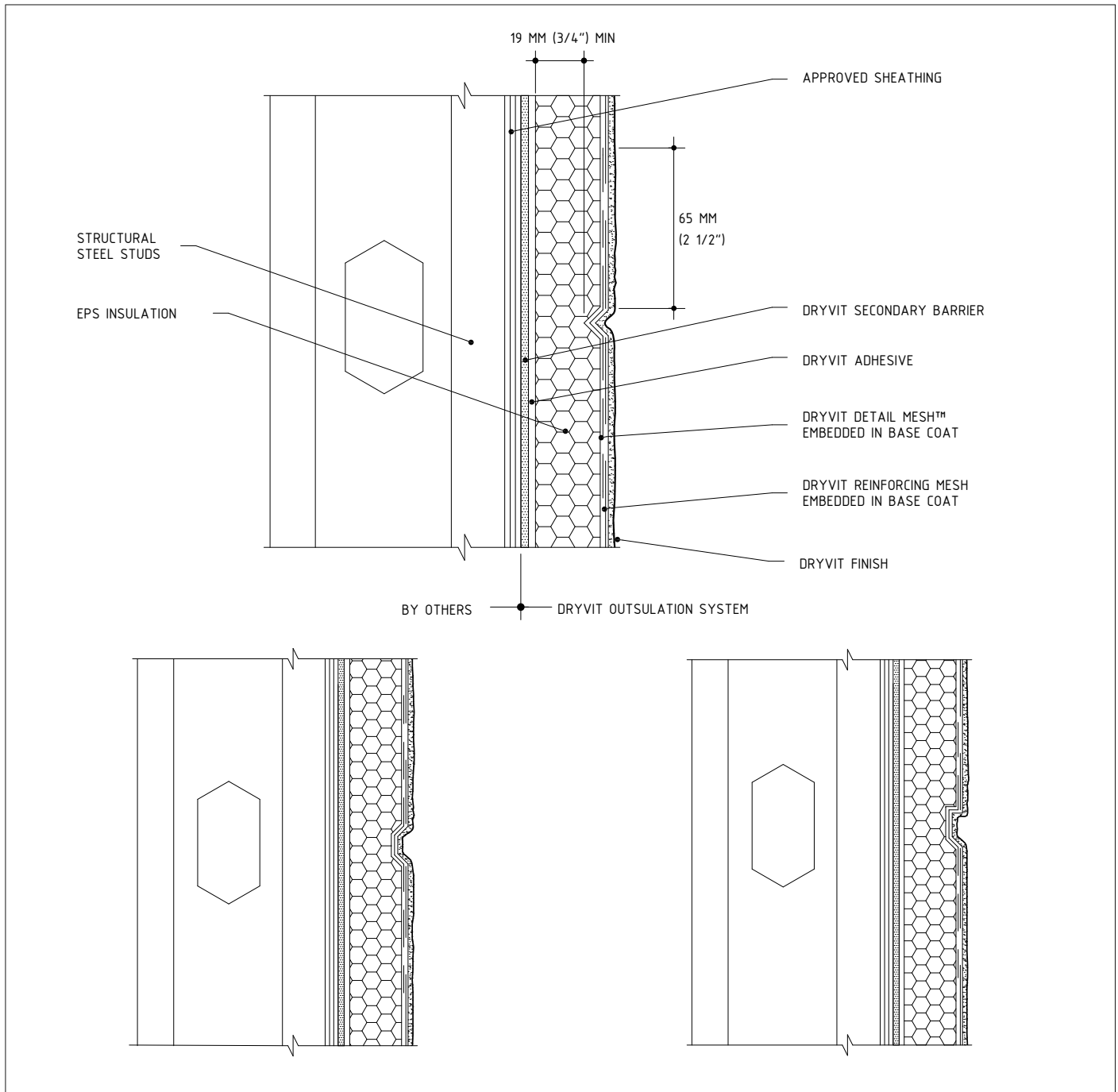
1. THESE DETAILS ARE MEANT TO APPLY TO BOTH OUTSULATION AND OUTSULATION NC. OUTSULATION NC REQUIRES THE USE OF PRIMUS[®] DM AS THE BASE COAT/ADHESIVE.
2. ENTIRE PERIMETER OF PIPE SLEEVE IS CAULKED TO PREVENT WATER ENTRY INTO WALL.

INSTALLATION INSTRUCTIONS:

1. PRE-DRILL THROUGH EIFS STOPPING AT WATER-RESISTIVE BARRIER (WRB).
2. CUT SLEEVE TO EQUAL DEPTH OF SYSTEM FROM WRB TO OUTSIDE FACE.
3. GUN NEUTRAL CURE SILICONE SEALANT INTO HOLE AND INSERT SLEEVE.
4. WHILE SEALANT IS WET, INSTALL FASTENER AND TOOL SEALANT AROUND EDGES AS SHOWN.

The architecture, engineering and design of the project using the Dryvit products is the responsibility of the project's design professional. All systems must comply with local building codes and standards. This detail is for general information and guidance only and Dryvit specifically disclaims any liability for the use of this detail and for the architecture, design, engineering or workmanship of any project. The project design professional determines, in its sole discretion, whether this detail or a functionally equivalent alternative is best suited for the project. Use of a functionally equivalent detail does not violate Dryvit's warranty. This detail is subject to change without notice. Contact Dryvit to insure you have the most recent version.

APPROVED BY:	REV:	DATE:
PC	4	07/08



Outsulation® (NC)

Aesthetic Reveals

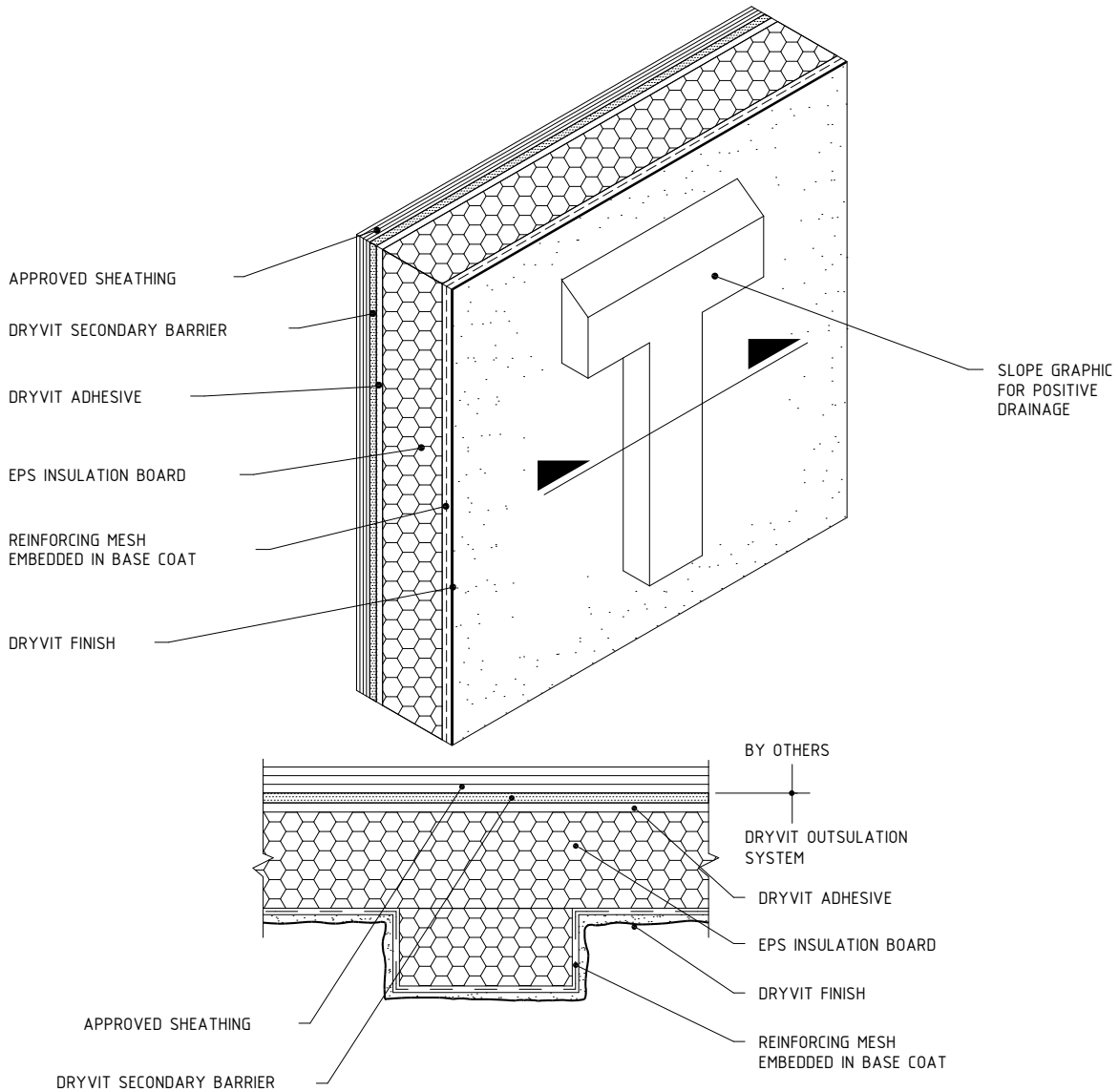
NOTE:

1. THESE DETAILS ARE MEANT TO APPLY TO BOTH OUTSULATION AND OUTSULATION NC. OUTSULATION NC REQUIRES THE USE OF PRIMUS® DM AS THE BASE COAT/ADHESIVE.

2. DRYVIT RECOMMENDS THAT GROUND FLOOR APPLICATIONS AND ALL FACADES EXPOSED TO ABNORMAL STRESS, HIGH TRAFFIC, OR DELIBERATE IMPACT HAVE THE BASE COAT REINFORCED WITH PANZER® 15 OR 20 MESH PRIOR TO STANDARD OR STANDARD PLUS MESH. LOCATION OF HIGH-IMPACT AREAS SHOULD BE INDICATED ON CONTRACT DRAWINGS.

The architecture, engineering and design of the project using the Dryvit products is the responsibility of the project's design professional. All systems must comply with local building codes and standards. This detail is for general information and guidance only and Dryvit specifically disclaims any liability for the use of this detail and for the architecture, design, engineering or workmanship of any project. The project design professional determines, in its sole discretion, whether this detail or a functionally equivalent alternative is best suited for the project. Use of a functionally equivalent detail does not violate Dryvit's warranty. This detail is subject to change without notice. Contact Dryvit to insure you have the most recent version.

APPROVED BY:	REV:	DATE:
PC	4	07/08



Outsulation[®] (NC)

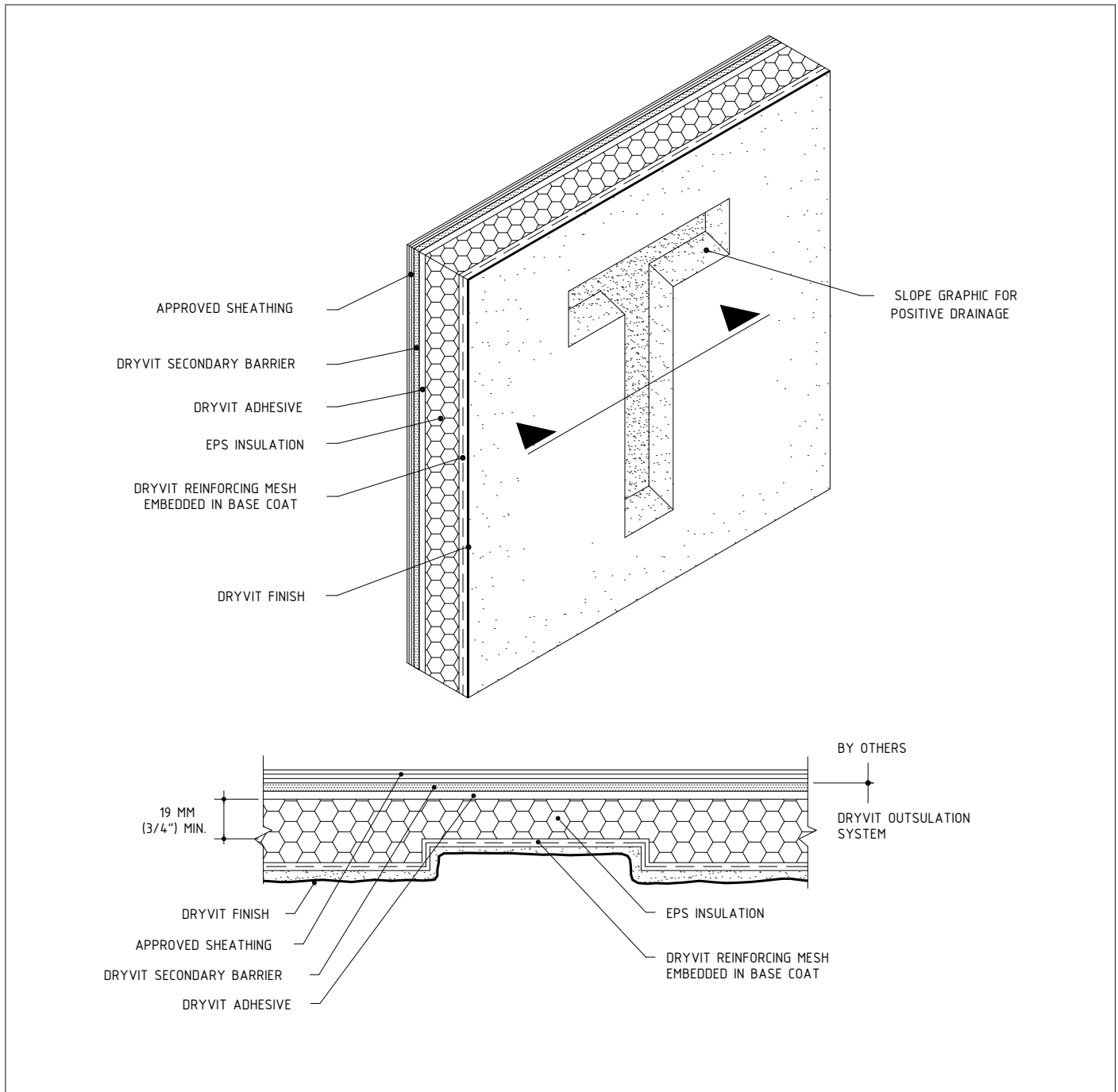
Projecting Graphics

NOTE:

1. THESE DETAILS ARE MEANT TO APPLY TO BOTH OUTSULATION AND OUTSULATION NC. OUTSULATION NC REQUIRES THE USE OF PRIMUS[®] DM AS THE BASE COAT/ADHESIVE.

The architecture, engineering and design of the project using the Dryvit products is the responsibility of the project's design professional. All systems must comply with local building codes and standards. This detail is for general information and guidance only and Dryvit specifically disclaims any liability for the use of this detail and for the architecture, design, engineering or workmanship of any project. The project design professional determines, in its sole discretion, whether this detail or a functionally equivalent alternative is best suited for the project. Use of a functionally equivalent detail does not violate Dryvit's warranty. This detail is subject to change without notice. Contact Dryvit to insure you have the most recent version.

APPROVED BY:	REV:	DATE:
PC	4	07/08



Outsulation® (NC)

Recessed Graphics

NOTE:

1. THESE DETAILS ARE MEANT TO APPLY TO BOTH OUTSULATION AND OUTSULATION NC. OUTSULATION NC REQUIRES THE USE OF PRIMUS® DM AS THE BASE COAT/ADHESIVE.

The architecture, engineering and design of the project using the Dryvit products is the responsibility of the project's design professional. All systems must comply with local building codes and standards. This detail is for general information and guidance only and Dryvit specifically disclaims any liability for the use of this detail and for the architecture, design, engineering or workmanship of any project. The project design professional determines, in its sole discretion, whether this detail or a functionally equivalent alternative is best suited for the project. Use of a functionally equivalent detail does not violate Dryvit's warranty. This detail is subject to change without notice. Contact Dryvit to insure you have the most recent version.

APPROVED BY:	REV:	DATE:
PC	4	07/08