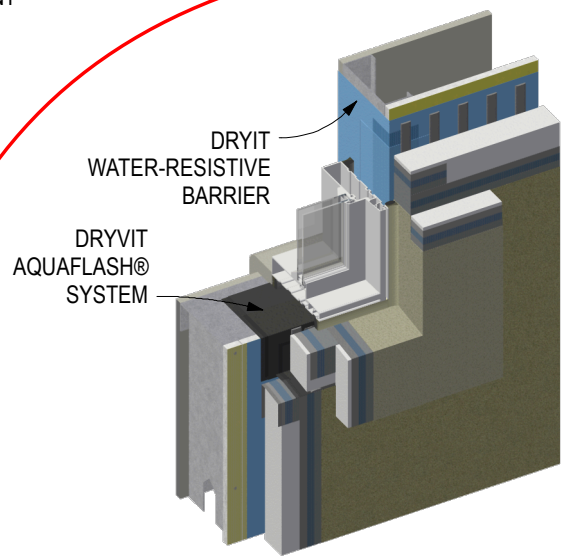
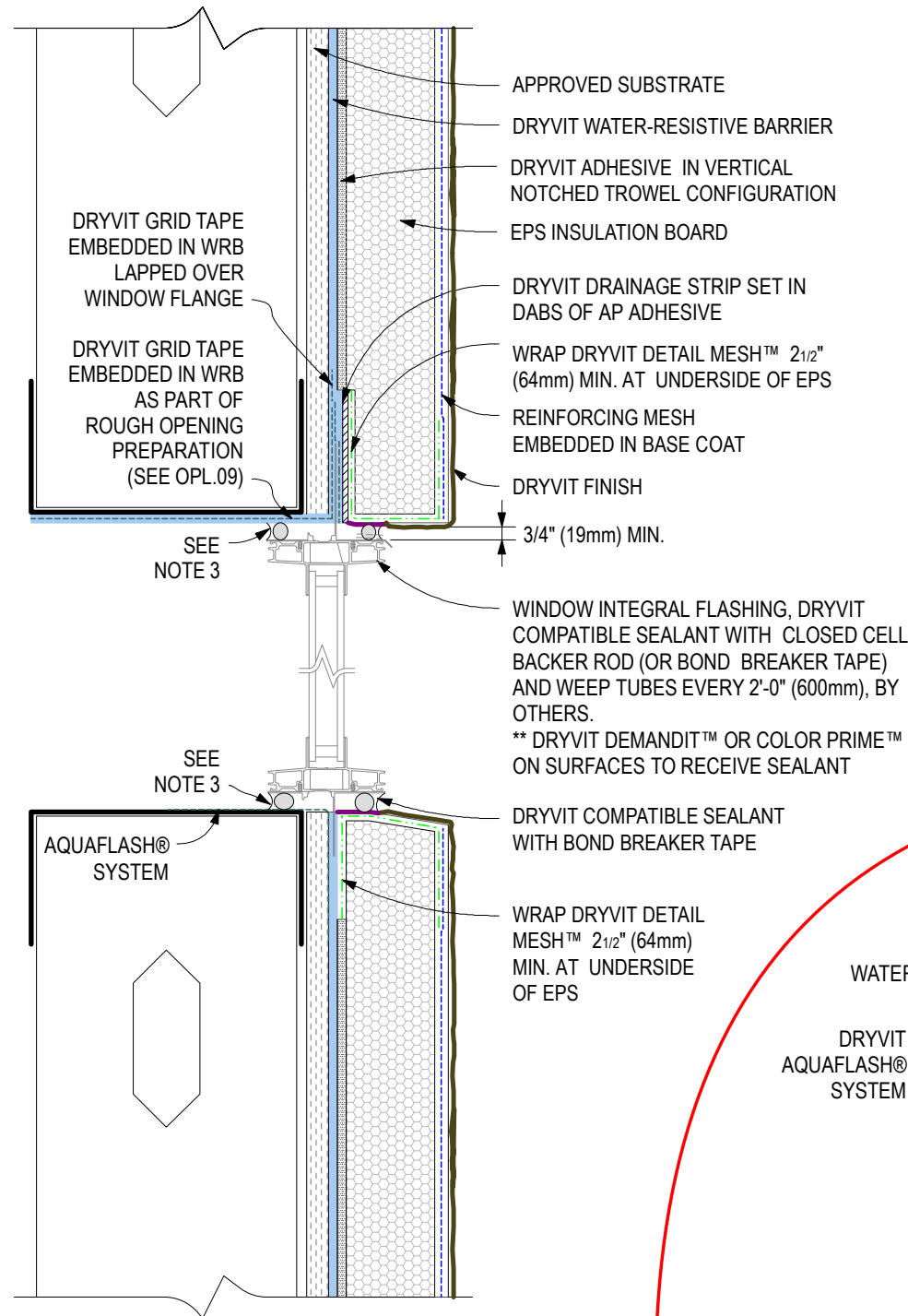


Notes:

1. These details are meant to apply to both Outsulation Plus and Outsulation Plus NC. Outsulation® Plus NC requires the use of Primus® DM as the base coat/adhesive.
2. Dryvit recommends that ground floor applications and all facades exposed to abnormal stress, high traffic, or deliberate impact have the base coat reinforced with Panzer® 15 or 20 Mesh prior to Standard Plus Mesh. Location of high impact zones should be indicated in contract drawings.
3. Provide air seal, by others, around interior of window per manufacturer's requirements.
4. Additional head flashing may be necessary for windows that are not self-flashing.



Drainable Sill Option

R-005-01-10

Head / Sill for self-flashing window options