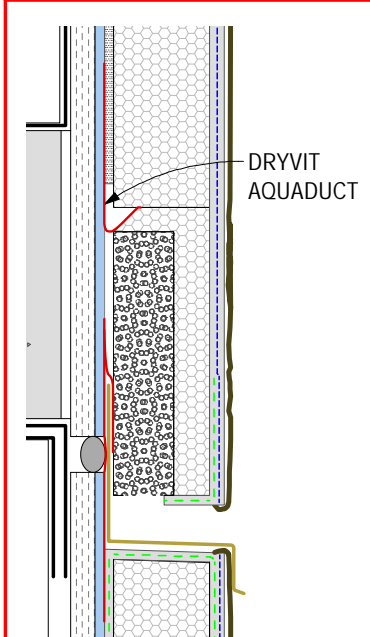


**Application Sequence:**

1. Apply coat of Dryvit water-resistant barrier (WRB) onto substrate.
2. Apply Dryvit AquaFlash® System over WRB coating at floorline joint.
3. Install the lower section of the Outsulation Plus System inclusive of closure blocks, backwrapping and adhesive.
4. Install flashing over AquaFlash® System, resting onto lower section. Ensure that flashing is protected from any material spillage.
5. Apply a second layer of AquaFlash® System lapped over the flashing.
6. Install the remainder of the system as shown.



**Section View**

R-005-01-10

Horizontal Slip Joint - Open joint with Aquaduct and Flashing option