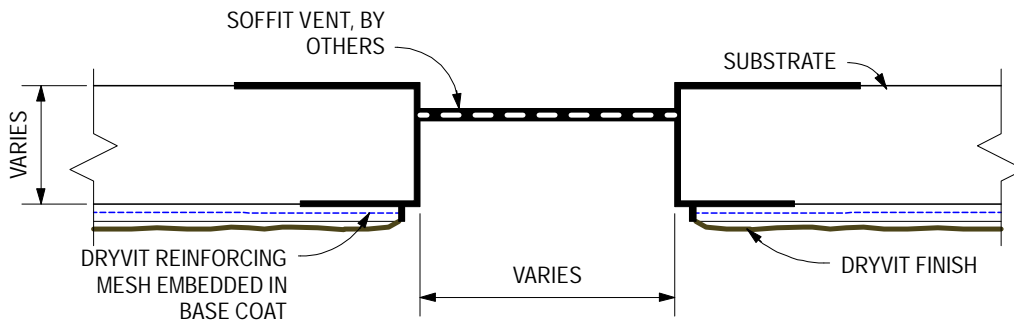
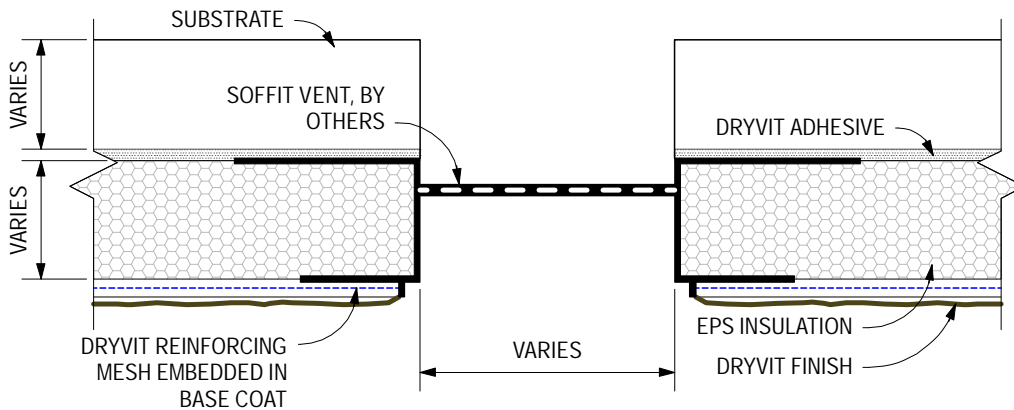


Notes:

1. These details are meant to apply to both Outsulation Plus and Outsulation Plus NC. Outsulation® Plus NC requires the use of Primus® DM as the base coat/adhesive.
2. Dryvit recommends that ground floor applications and all facades exposed to abnormal stress, high traffic, or deliberate impact have the base coat reinforced with Panzer® 15 or 20 Mesh prior to Standard Plus Mesh. Location of high impact zones should be indicated in contract drawings.
3. Caulk all butt joints, intersections, and end of vents.



Uninsulated



Insulated

R-005-01-10

Soffit Vent