

## Outsulation® MD (NC) System Installation Details

## DETAIL

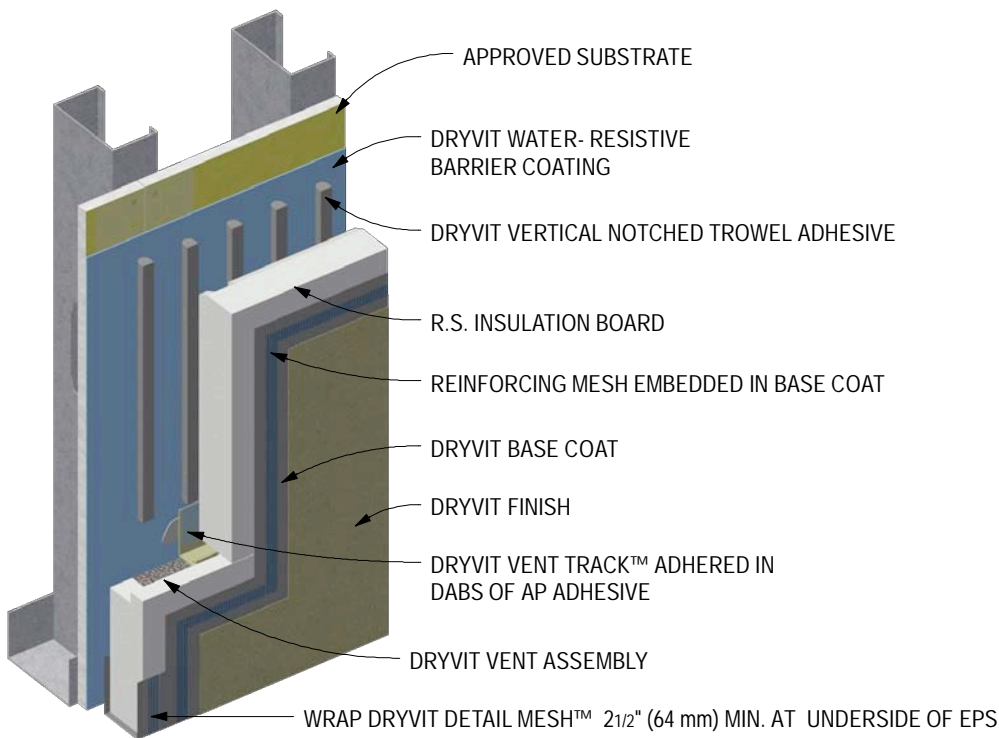
OMD.01	OUTSULATION MD SYSTEM
OMD.02	OUTSULATION MD SYSTEM WITH AQUADUCT OPTION
OMD.03	OUTSULATION MD BOARD PROFILE & ADHESIVE PATTERN
OMD.04	BUILDING FACADE - AQUADUCT / PE OPTION SHOWN
OMD.05	OUTSIDE CORNER - R.S. BOARD LAYOUT
OMD.06	COMPARTMENT SEPARATION - PE OPTION SHOWN
OMD.07	FOUNDATION
OMD.08	TERMINATION AT CONCRETE
OMD.09	PROTECTION OF ROUGH OPENINGS
OMD.10A	HEAD / SILL - FOR WINDOW SPANS LESS THAN 10' (3M)
OMD.10B	HEAD / SILL - FOR WINDOW SPANS 10' (3M) OR GREATER
OMD.11	JAMB
OMD.12	PARAPET - CAP FLASHING
OMD.13	PARAPET - SOLID SUBSTRATE, METAL COPING
OMD.14	SOFFIT / FASCIA INTERSECTION
OMD.15	INSIDE / OUTSIDE CORNERS
OMD.16	OUTSIDE CORNER - HIGH IMPACT
OMD.17	HORIZONTAL EXPANSION JOINT
OMD.18	HORIZONTAL SLIP JOINT
OMD.19	HORIZONTAL SLIP JOINT - EXTENDED 2D VIEW
OMD.20	HORIZONTAL SLIP JOINT - OPEN SEALANT WITH FLASHING OPTION
OMD.21	TWO-STAGE JOINT
OMD.22	STRUCTURAL EXPANSION JOINTS
OMD.23	PENETRATIONS - CROSS SECTION
OMD.24	INSULATION LAYOUT - OPENINGS
OMD.25	SIGN ATTACHMENT
OMD.26	AESTHETIC REVEALS
OMD.27	PROJECTING GRAPHICS
OMD.28	RECESSED GRAPHICS

## NOTE

DRYVIT MAKES NO REPRESENTATION REGARDING CONFORMITY OF ITS SUGGESTIONS TO APPLICABLE BUILDING CODES, ENGINEERING CRITERIA, SPECIFIC APPLICATIONS OR PROJECT LOCATIONS. ALL COMPONENTS INDICATED IN ILLUSTRATIONS, AS WELL AS OTHERS THAT MAY BE REQUIRED FOR THE INTEGRITY OF THE SYSTEM SHALL BE DESIGNED, DETAILED AND ENGINEERED BY REPRESENTATIVES OF THE ARCHITECT, OWNER OR CONTRACTOR TO BE IN CONFORMANCE WITH MODEL CODES, ARCHITECTURAL AND ENGINEERING REQUIREMENTS PERTAINING TO SPECIFIC BUILDING PROJECTS.

DRYVIT MAKES NO WARRANTY, EXPRESSED OR IMPLIED, AS TO THE ARCHITECTURAL DESIGN, ENGINEERING, OR WORKMANSHIP OF PROJECTS UTILIZING DRYVIT SYSTEMS OR PRODUCTS.

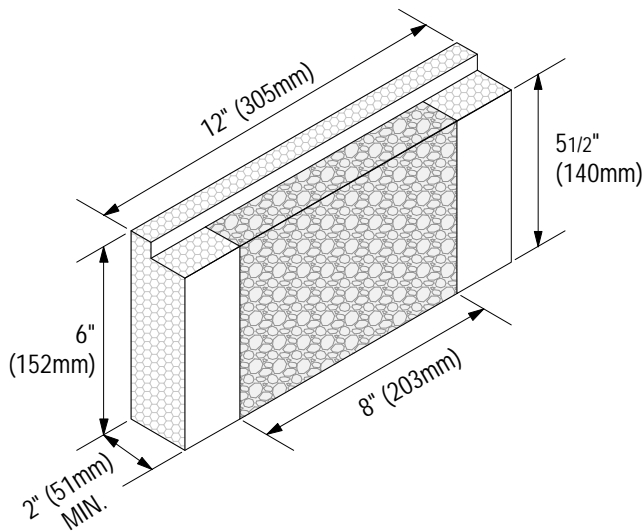
THE LIABILITIES OF DRYVIT SHALL BE AS STATED IN THE OUTSULATION® MD LIMITED COMMERCIAL WARRANTY. CONTACT DRYVIT FOR A FULL AND COMPLETE COPY OF THE WARRANTY.



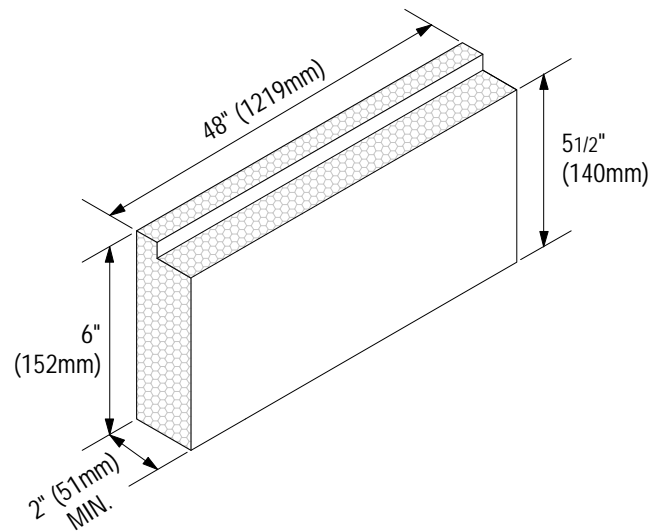
**Notes:**

1. These details are meant to apply to both Outsulation MD and Outsulation MD NC. Outsulation® MD NC requires the use of Primus® DM as the base coat/adhesive.
2. Dryvit recommends that ground floor applications and all facades exposed to abnormal stress, high traffic, or deliberate impact have the base coat reinforced with Panzer® 15 or 20 Mesh prior to Standard Plus Mesh. Location of high impact zones should be indicated in contract drawings.

**System Components**



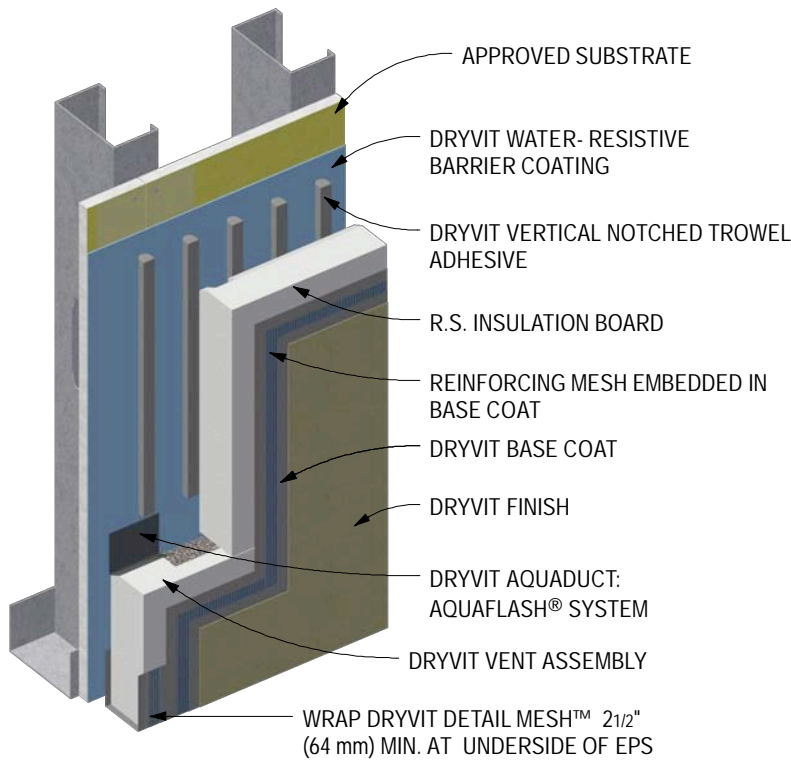
**Dryvit Vent Assembly**



**Dryvit Starter Strip**

R-007-04-11

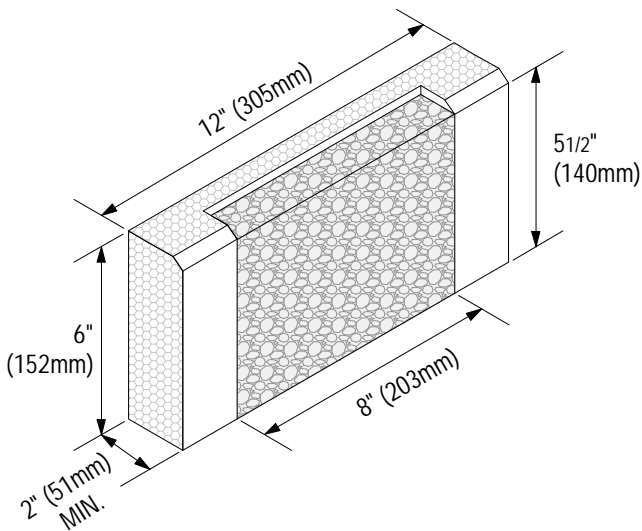
Outsulation® MD System



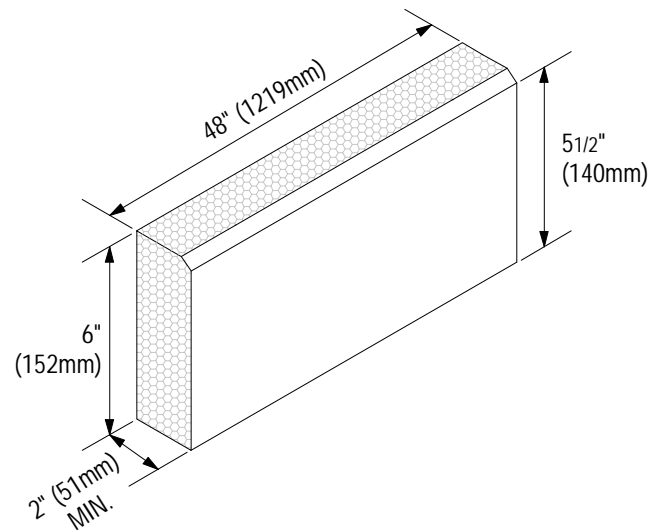
**Notes:**

1. These details are meant to apply to both Outsulation MD and Outsulation MD NC. Outsulation® MD NC requires the use of Primus® DM as the base coat/adhesive.
2. Dryvit recommends that ground floor applications and all facades exposed to abnormal stress, high traffic, or deliberate impact have the base coat reinforced with Panzer® 15 or 20 Mesh prior to Standard Plus Mesh. Location of high impact zones should be indicated in contract drawings.

**AquaDuct Option**



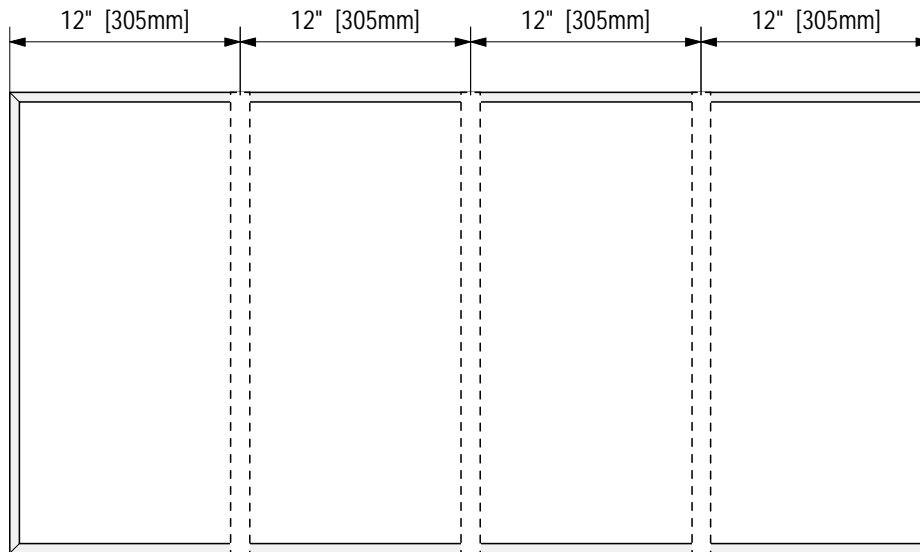
**Dryvit Vent Assembly (for AquaDuct Option)**



**Dryvit Starter Strip (for AquaDuct Option)**

R-007-04-11

Outsulation® MD System with AquaDuct Option

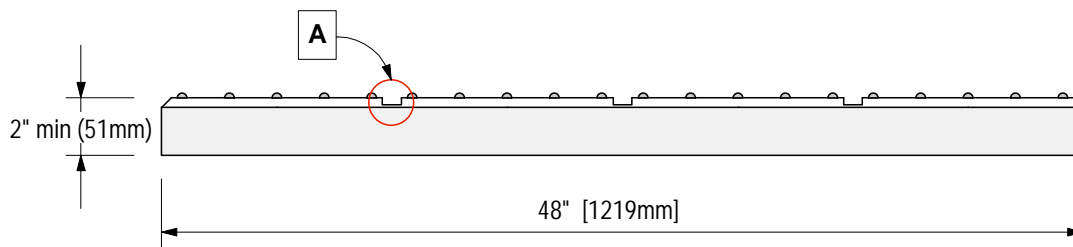


**Notes:**

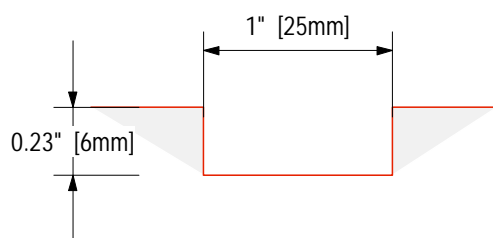
Notched hrowel adhesive ribbons may vary from illustration.

A minimum of four (4) ribbons per 12" section will be required.

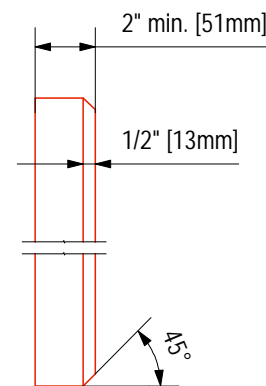
**Elevation view**



**Plan view and sample adhesive distribution pattern**



**Groove A Section**



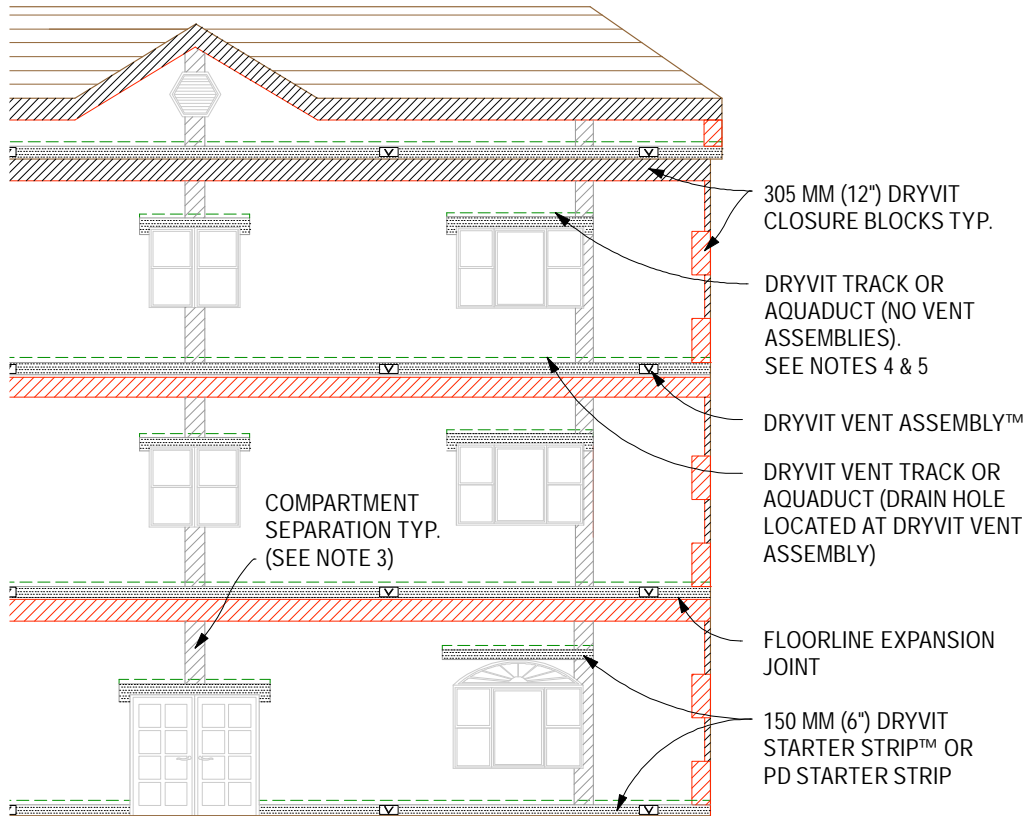
**Bevel Detail**

R-007-04-11

Outsulation® MD Board Profile and Adhesive Pattern

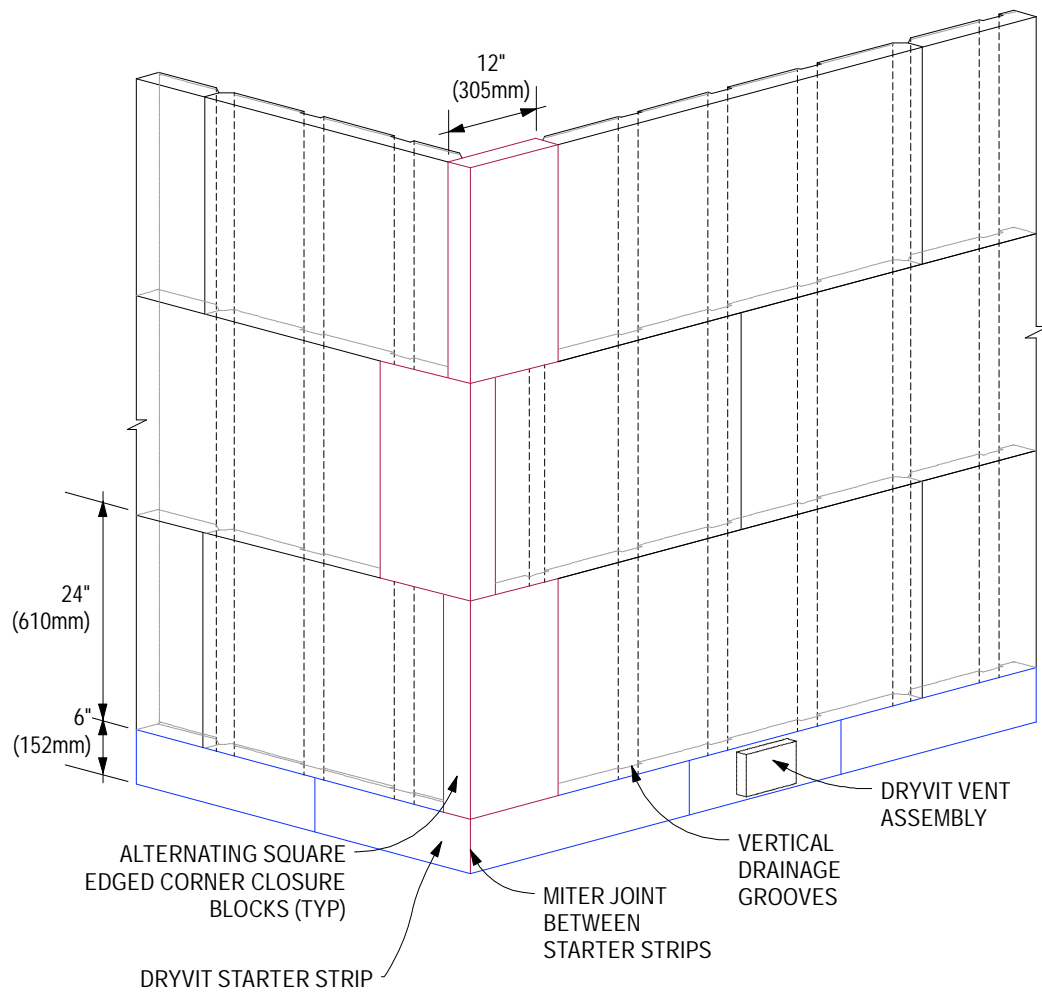
**Notes:**

1. These details are meant to apply to both Outsulation MD and Outsulation MD NC. Outsulation® MD NC requires the use of Primus® DM as the base coat/adhesive.
2. Compartment locations determined as per ASCE 7-95 and Dryvit Outsulation MD and PE System Specifications DSC168NC.
3. Vertical compartment separations not required where pressure equalization is not desired.
4. Dryvit Starter Strip (or PD Starter Strip) above to be notched a minimum of 3" to accommodate picture framing.
5. For windows/glazing greater than 10' wide, see detail OMD.10B



R-007-04-11

Building Facade - AquaDuct / PE option shown



**Notes:**

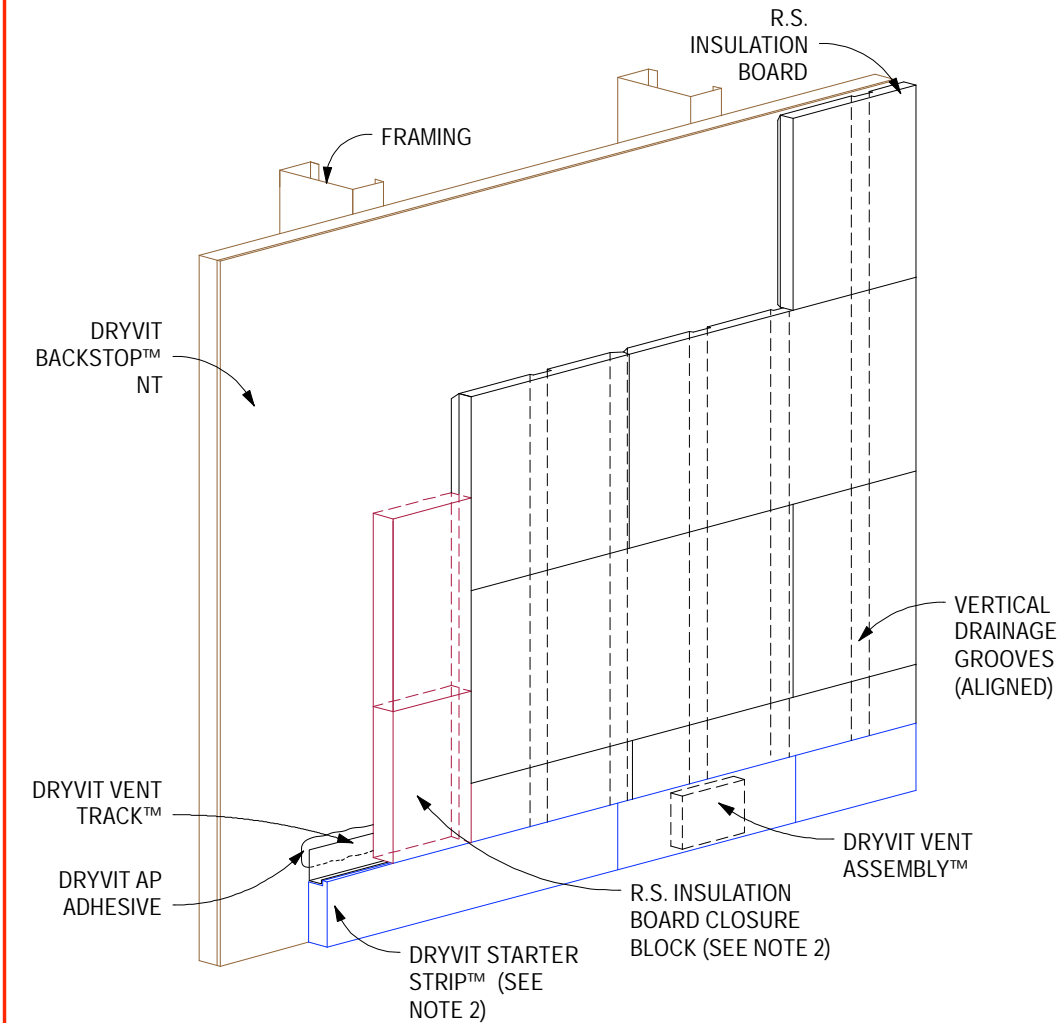
1. These details are meant to apply to both Outsulation MD and Outsulation MD NC. Outsulation® MD NC requires the use of Primus® DM as the base coat/adhesive.
2. Dryvit recommends that ground floor applications and all facades exposed to abnormal stress, high traffic, or deliberate impact have the base coat reinforced with Panzer® 15 or 20 Mesh prior to Standard Plus Mesh. Location of high impact zones should be indicated in contract drawings.
3. Install square edged corner closure blocks on alternating sides of outside corners.
4. Alignment of vertical grooves not required.
5. Closure blocks not required at vertical terminations, i.e. expansion joints and vertical integration with other cladding.

R-007-04-11

Outside Corner - R.S. Insulation Board Layout

**Notes:**

1. Adhere closure blocks and Starter Strips using "Ribbon and Dab" adhesive pattern to provide compartment closure.
2. Fill Dryvit Vent Track with AP Adhesive prior to setting closure block, to provide compartment closure.

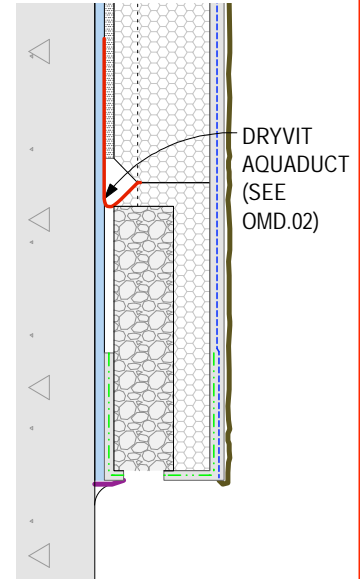
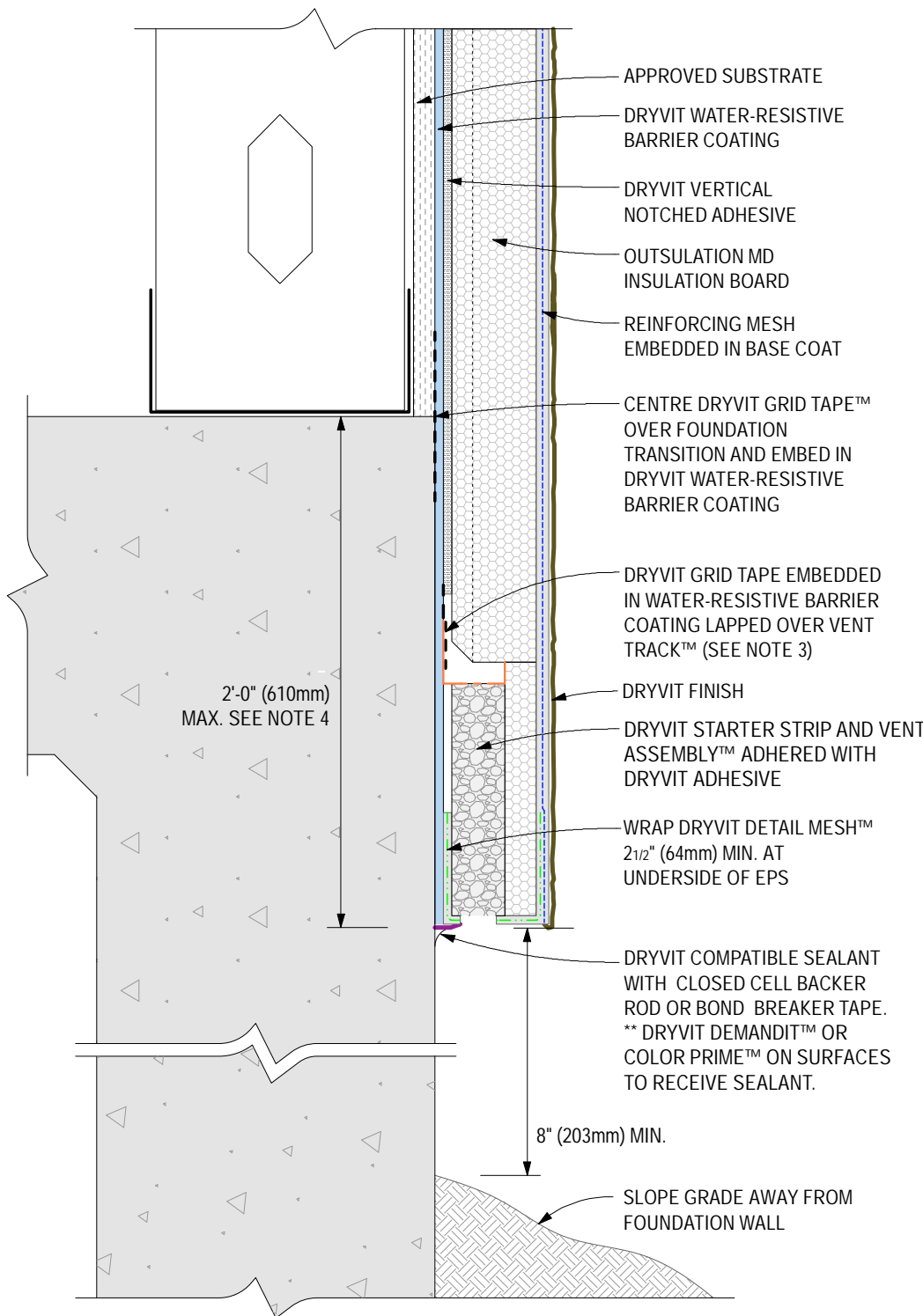


R-007-04-11

Compartment Separation - Outsulation PE Option

**Notes:**

1. These details are meant to apply to both Outsulation MD and Outsulation MD NC. Outsulation® MD NC requires the use of Primus® DM as the base coat/adhesive.
2. Dryvit recommends that ground floor applications and all facades exposed to abnormal stress, high traffic, or deliberate impact have the base coat reinforced with Panzer® 15 or 20 Mesh prior to Standard Plus Mesh. Location of high impact zones should be indicated in contract drawings.
3. Lightly sand surface of track to maximize adhesion.
4. Expansion joint is required along top of foundation if 610mm (2'-0") dimension is exceeded.



R-007-04-11

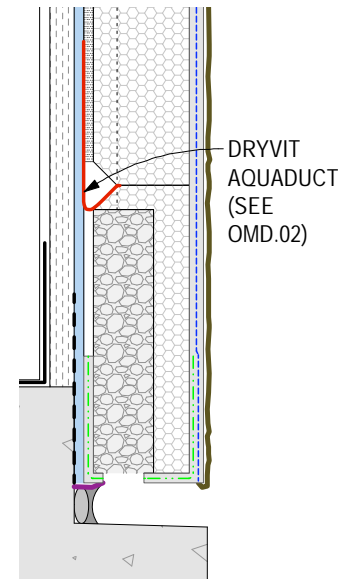
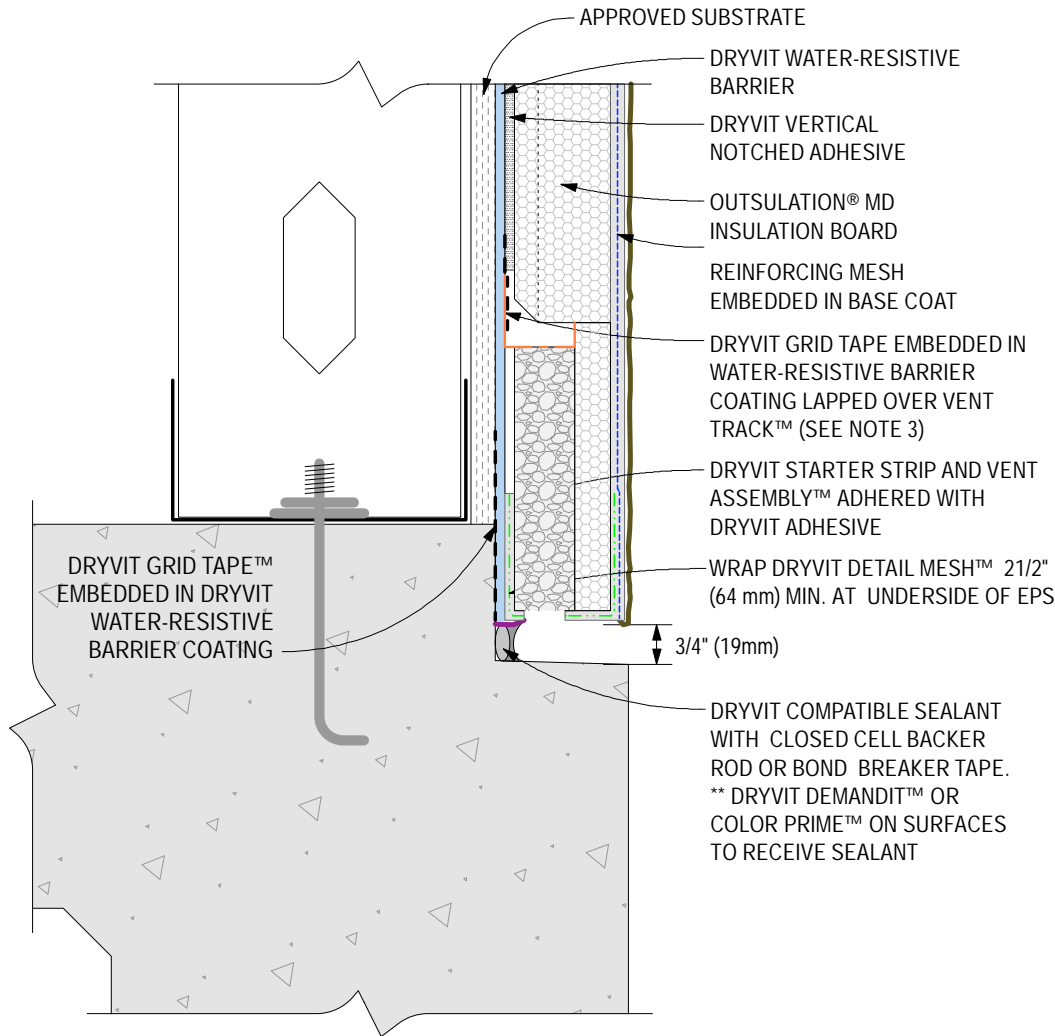
Foundation

**Notes:**

1. These details are meant to apply to both Outsulation MD and Outsulation MD NC. Outsulation® MD NC requires the use of Primus® DM as the base coat/adhesive.

2. Dryvit recommends that ground floor applications and all facades exposed to abnormal stress, high traffic, or deliberate impact have the base coat reinforced with Panzer® 15 or 20 Mesh prior to Standard Plus Mesh. Location of high impact zones should be indicated in contract drawings.

3. Lightly sand surface of track to maximize adhesion.



**AquaDuct Option**

R-007-04-11

Termination at Concrete

**Application Sequence and Notes:**

1. Apply water-resistive barrier (WRB) over sheathing and into rough opening.

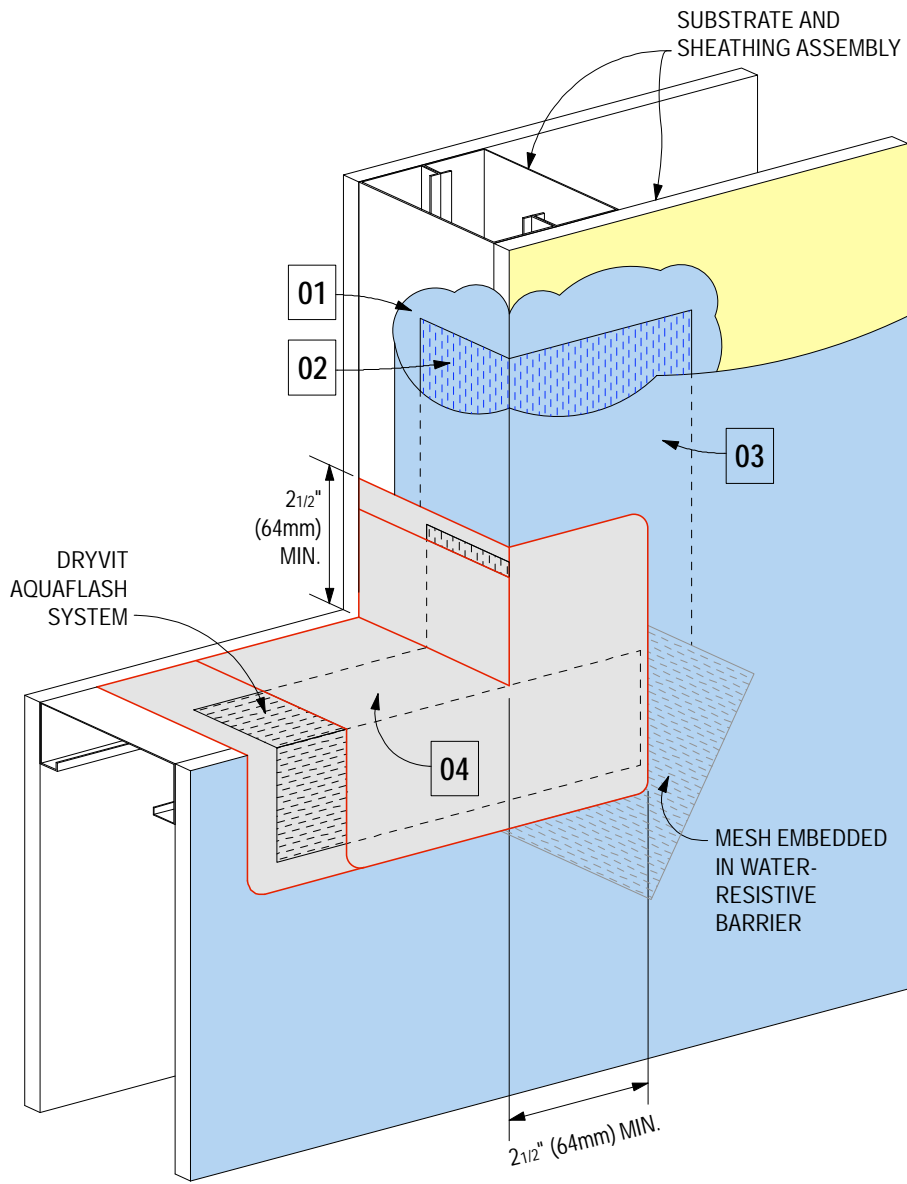
2. Embed Detail Mesh™ into WRB, stopping at sill. Embed diagonal mesh as shown at all corners.

3. Once embedment is complete, apply WRB over remainder of the substrate as illustrated.

4. Apply AquaFlash® and AquaFlash mesh as per DSC196 - Sills only if WRB is applied around the balance of the rough opening.

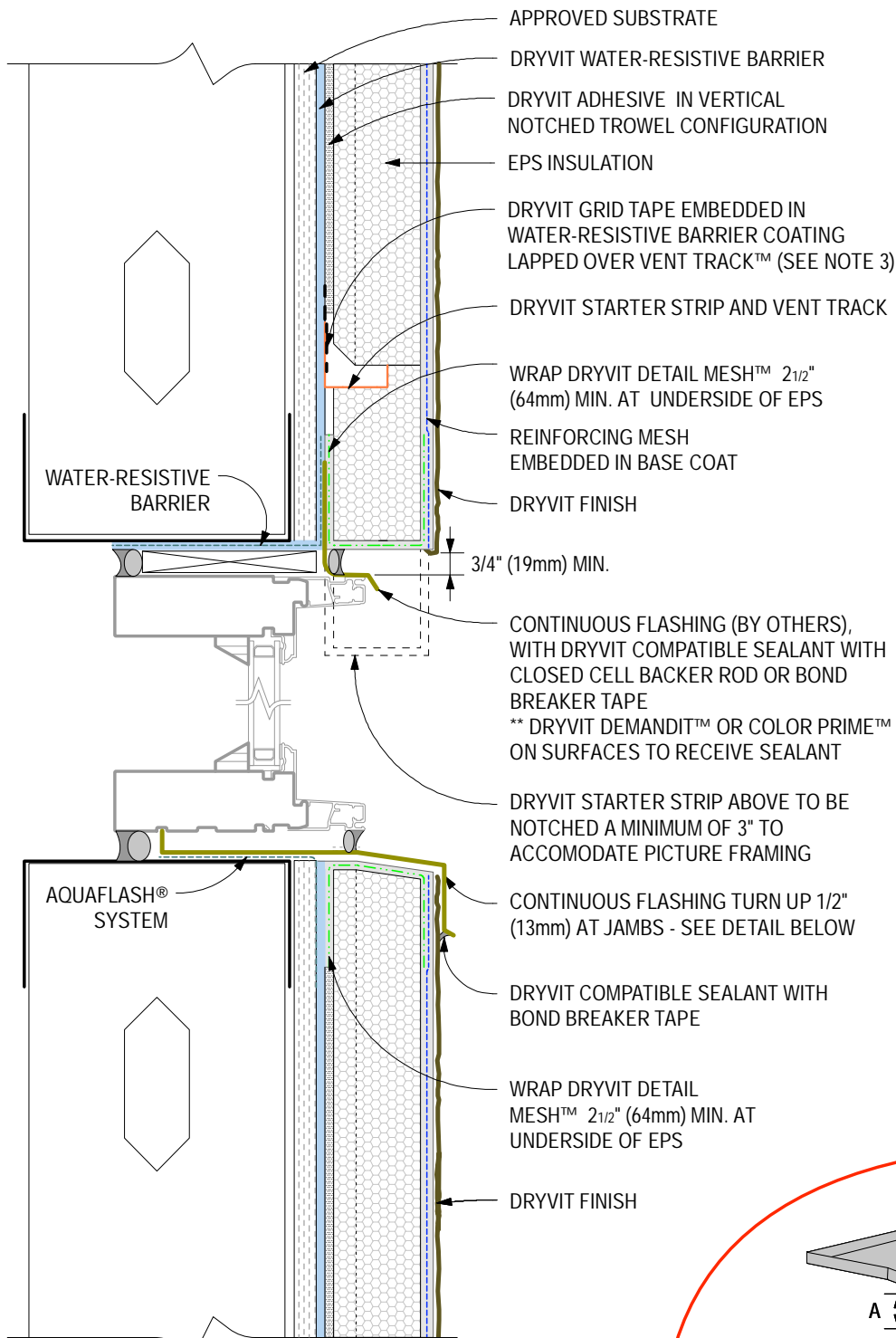
AquaFlash is applied using a brush or deep-nap roller. Embed AquaFlash Mesh into wet AquaFlash and allow to set.

Apply second coat fully covering the AquaFlash Mesh.



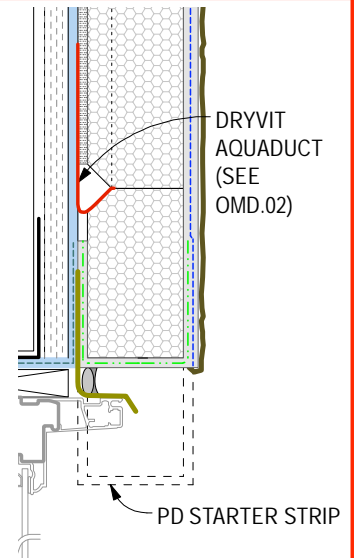
R-007-04-11

Protection of Rough Openings

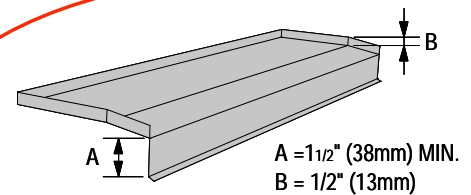


**Notes:**

1. These details are meant to apply to both Outsulation MD and Outsulation MD NC. Outsulation® MD NC requires the use of Primus® DM as the base coat/adhesive.
2. Dryvit recommends that ground floor applications and all facades exposed to abnormal stress, high traffic, or deliberate impact have the base coat reinforced with Panzer® 15 or 20 Mesh prior to Standard Plus Mesh. Location of high impact zones should be indicated in contract drawings.
3. Lightly sand surface of track to maximize adhesion.



**AquaDuct Option**

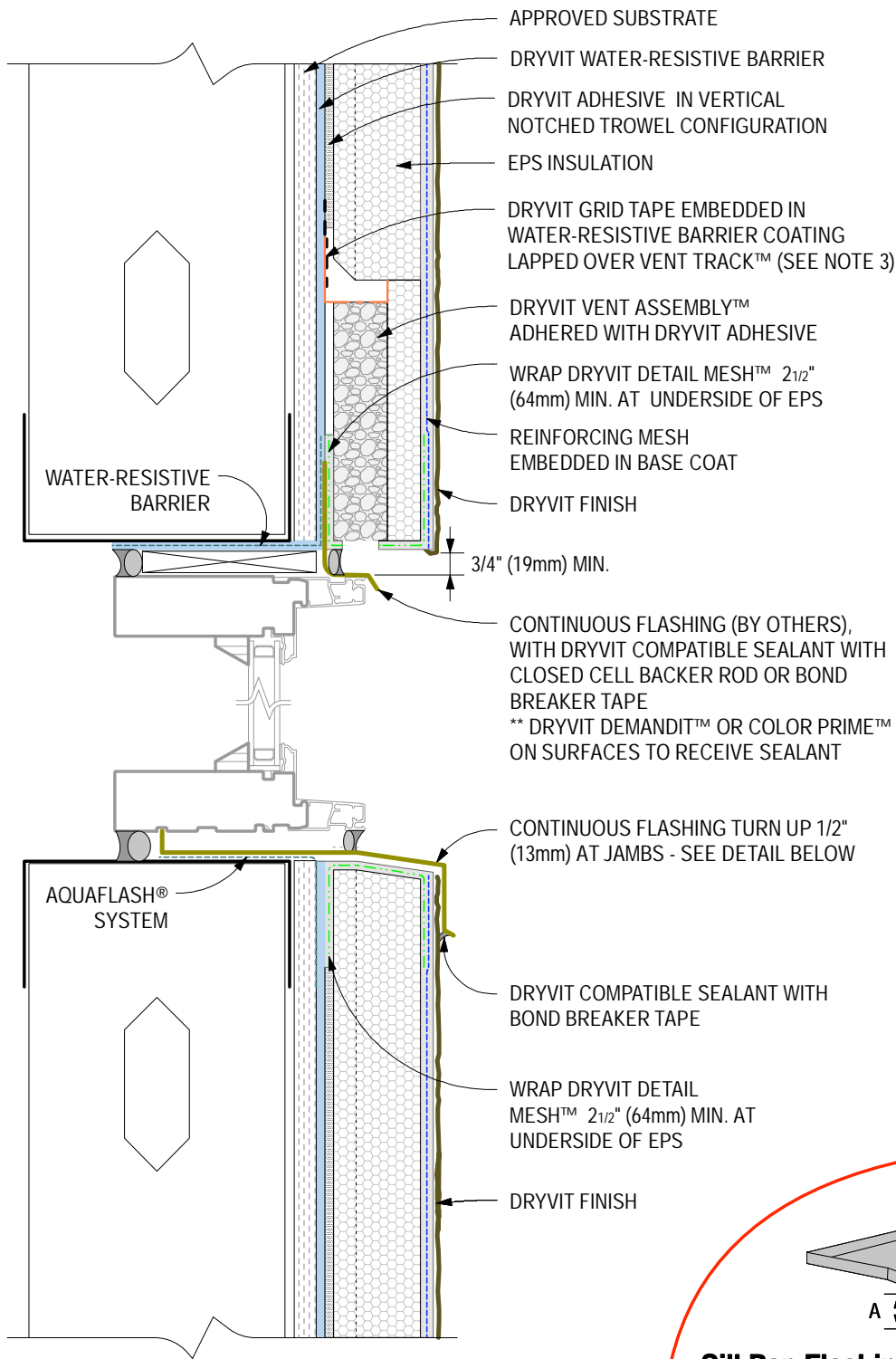


**Sill Pan Flashing Detail**

A = 1 1/2" (38mm) MIN.  
B = 1/2" (13mm)

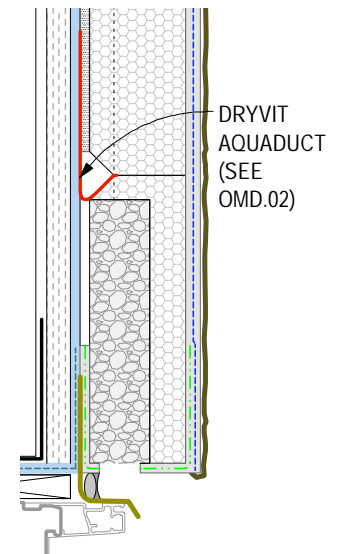
R-007-04-11

Head / Sill - For window spans less than 10' (3m)

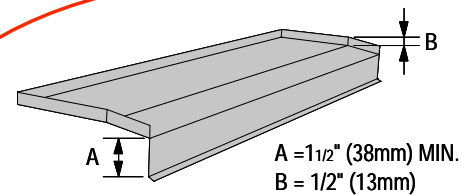


**Notes:**

1. These details are meant to apply to both Outsulation MD and Outsulation MD NC. Outsulation® MD NC requires the use of Primus® DM as the base coat/adhesive.
2. Dryvit recommends that ground floor applications and all facades exposed to abnormal stress, high traffic, or deliberate impact have the base coat reinforced with Panzer® 15 or 20 Mesh prior to Standard Plus Mesh. Location of high impact zones should be indicated in contract drawings.
3. Lightly sand surface of track to maximize adhesion.



**AquaDuct Option**



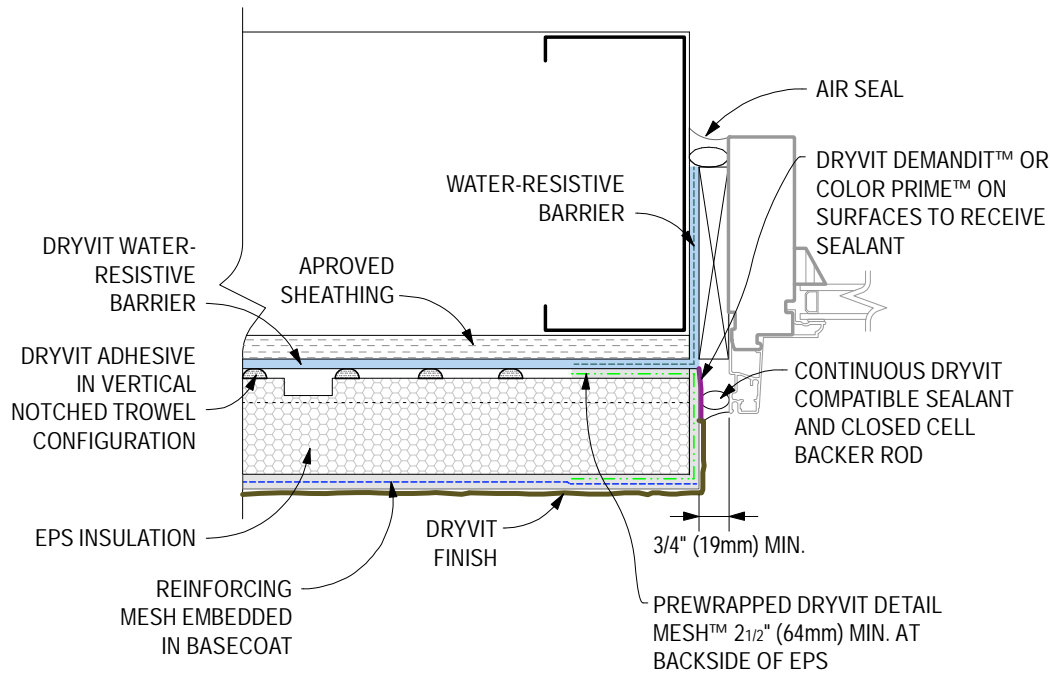
**Sill Pan Flashing Detail**

R-007-04-11

Head / Sill - For window spans 10' or greater

**Notes:**

1. These details are meant to apply to both Outsulation MD and Outsulation MD NC. Outsulation® MD NC requires the use of Primus® DM as the base coat/adhesive.
2. Dryvit recommends that ground floor applications and all facades exposed to abnormal stress, high traffic, or deliberate impact have the base coat reinforced with Panzer® 15 or 20 Mesh prior to Standard Plus Mesh. Location of high impact zones should be indicated in contract drawings.



R-007-04-11

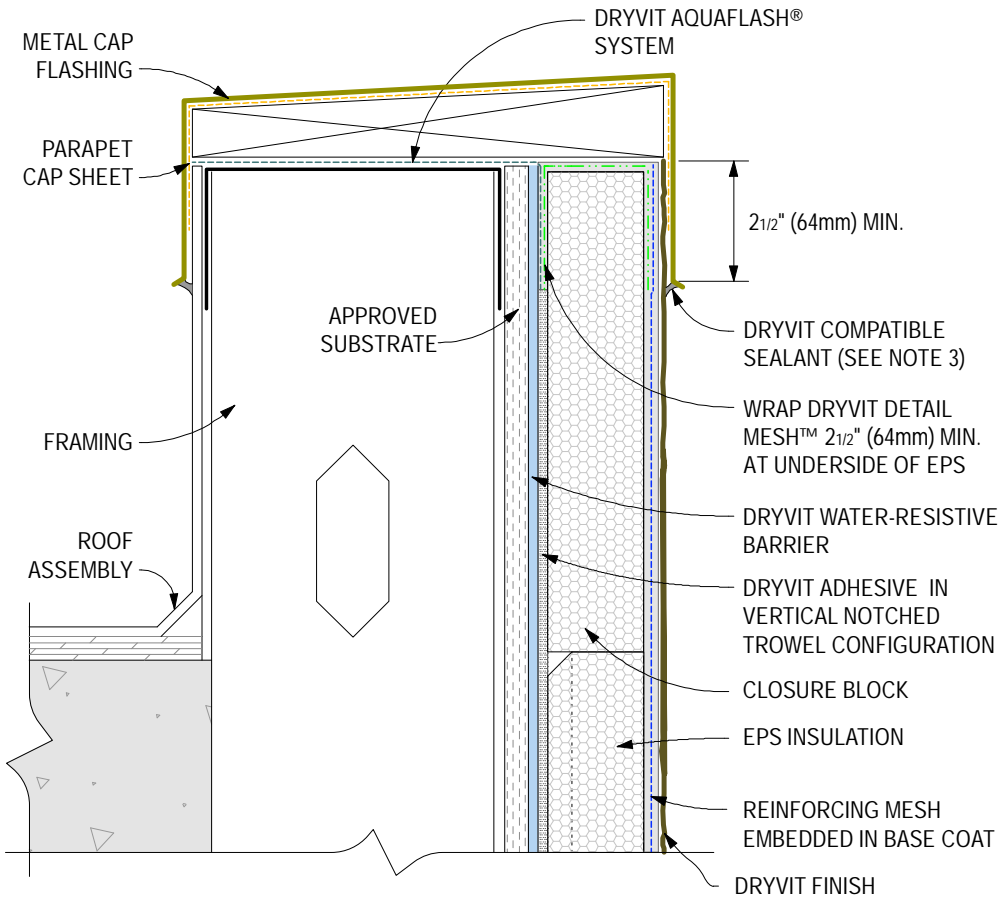
Jamb

**Notes:**

1. These details are meant to apply to both Outsulation MD and Outsulation MD NC. Outsulation® MD NC requires the use of Primus® DM as the base coat/adhesive.

2. Dryvit recommends that ground floor applications and all facades exposed to abnormal stress, high traffic, or deliberate impact have the base coat reinforced with Panzer® 15 or 20 Mesh prior to Standard Plus Mesh. Location of high impact zones should be indicated in contract drawings.

3. Ensure that parapet capping is water tight if sealant is to be applied here. Otherwise extend capping overlap as required to avoid moisture migration behind system.



R-007-04-11

Parapet - Cap Flashing

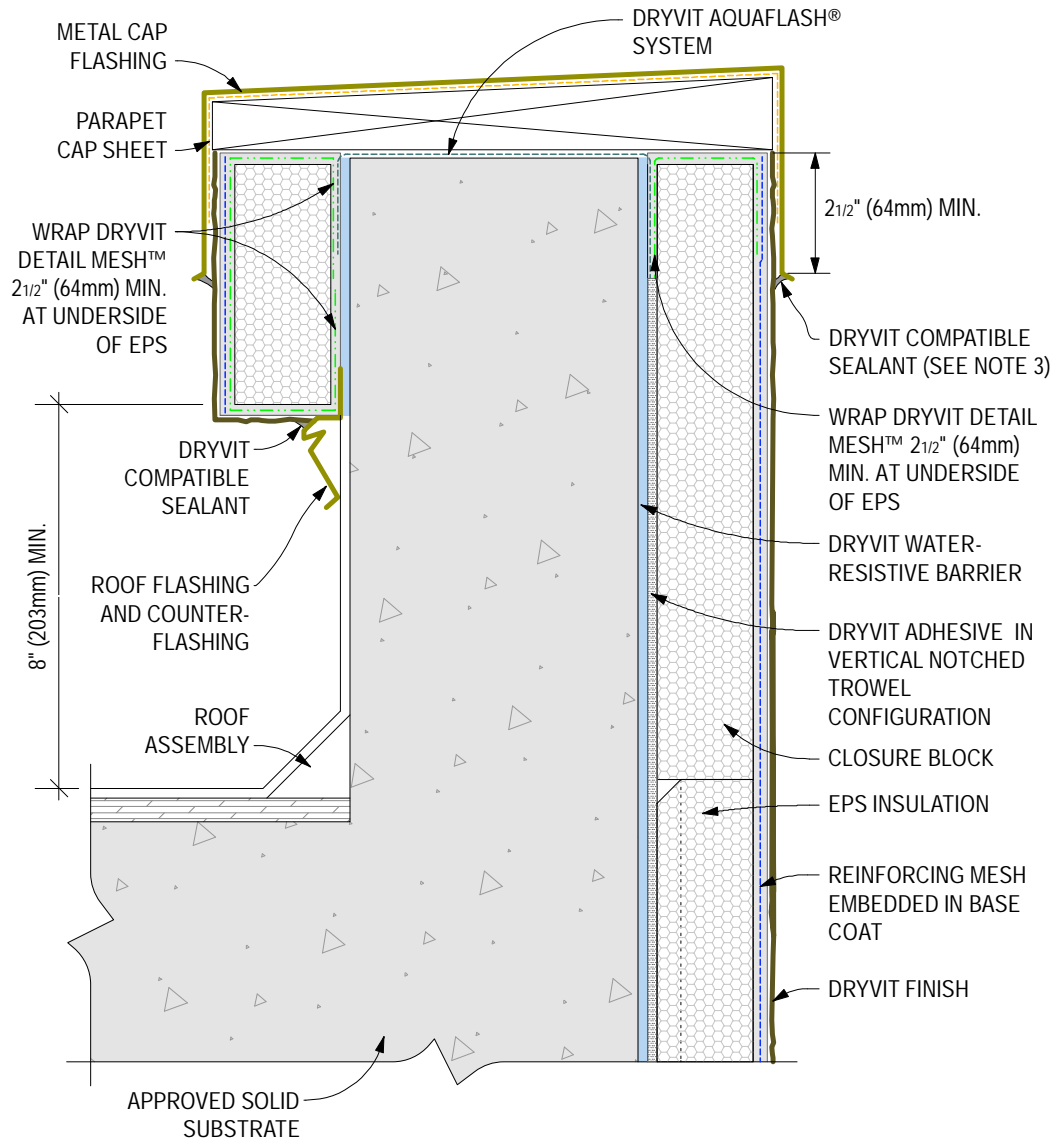
**Notes:**

1. These details are meant to apply to both Outsulation MD and Outsulation MD NC. Outsulation® MD NC requires the use of Primus® DM as the base coat/adhesive.

2. Dryvit recommends that ground floor applications and all facades exposed to abnormal stress, high traffic, or deliberate impact have the base coat reinforced with Panzer® 15 or 20 Mesh prior to Standard Plus Mesh. Location of high impact zones should be indicated in contract drawings.

3. Ensure that parapet capping is water tight if sealant is to be applied here. Otherwise extend capping overlap as required to avoid moisture migration behind system.

4. If system on back of parapet extends for more than 2'-0" (610mm), provide for drainage similar to wall face.

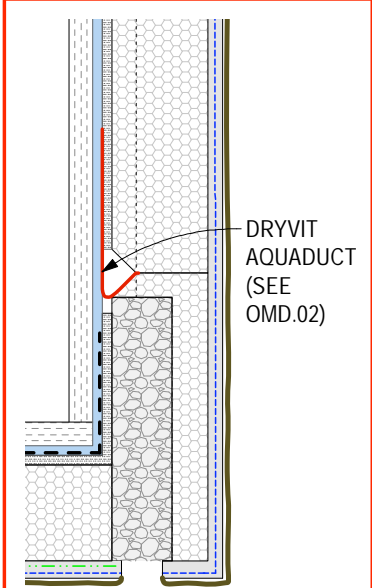
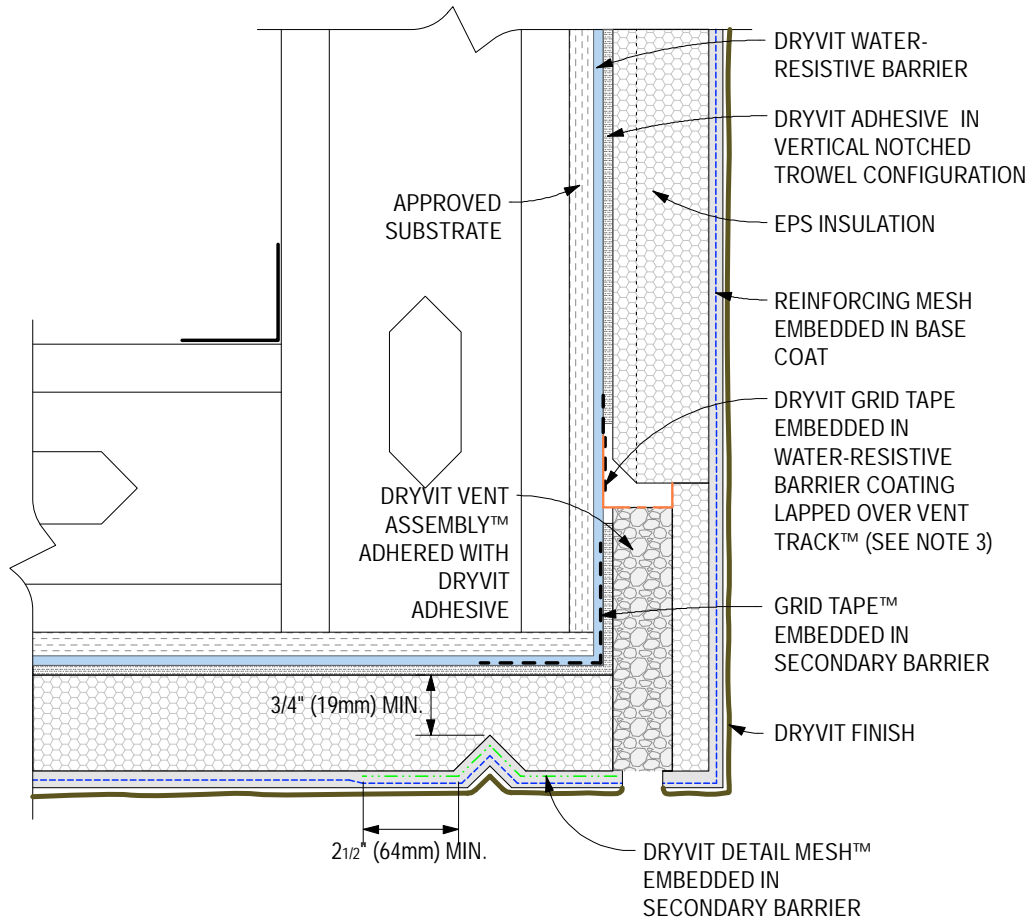


R-007-04-11

Parapet - Solid Substrate, Metal Coping

**Notes:**

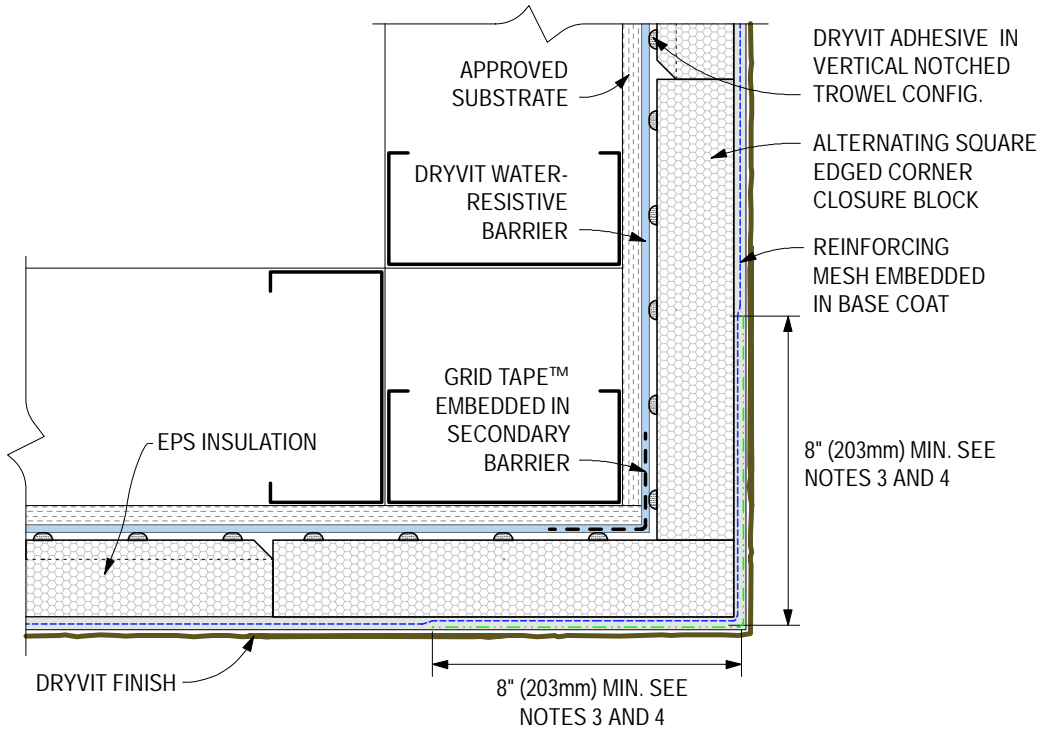
1. These details are meant to apply to both Outsulation MD and Outsulation MD NC. Outsulation® MD NC requires the use of Primus® DM as the base coat/adhesive.
2. Dryvit recommends that ground floor applications and all facades exposed to abnormal stress, high traffic, or deliberate impact have the base coat reinforced with Panzer® 15 or 20 Mesh prior to Standard Plus Mesh. Location of high impact zones should be indicated in contract drawings.
3. Lightly sand surface of track to maximize adhesion.



**AquaDuct Option**

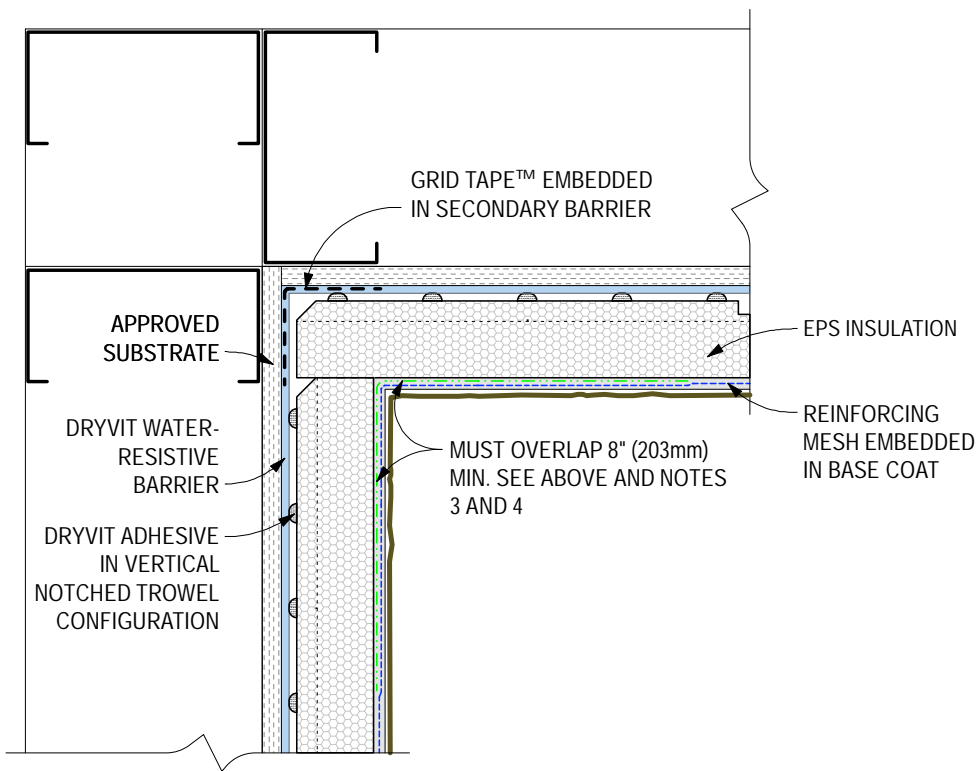
R-007-04-11

Soffit / Fascia Intersection



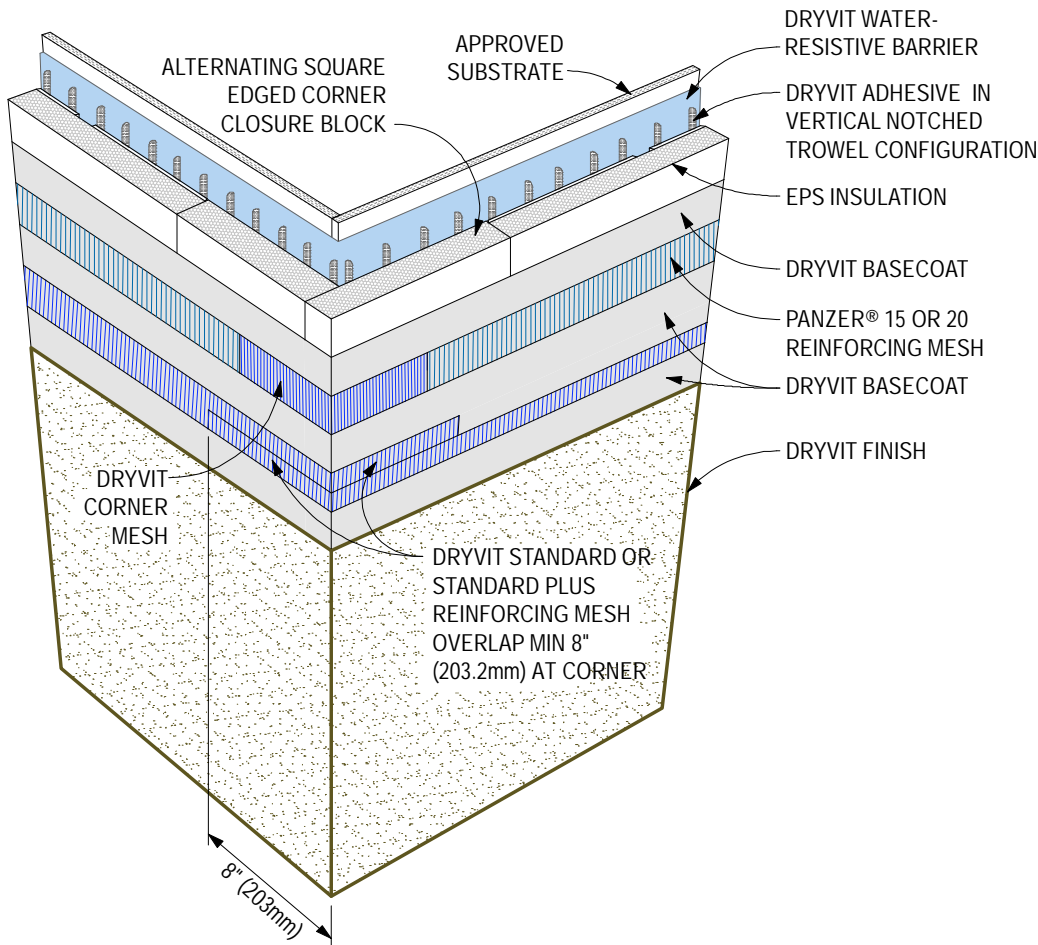
**Notes:**

1. These details are meant to apply to both Outsulation MD and Outsulation MD NC. Outsulation® MD NC requires the use of Primus® DM as the base coat/adhesive.
2. Dryvit recommends that ground floor applications and all facades exposed to abnormal stress, high traffic, or deliberate impact have the base coat reinforced with Panzer® 15 or 20 Mesh prior to Standard Plus Mesh. Location of high impact zones should be indicated in contract drawings.
3. Double wrap outside corners with reinforcing mesh or use corner mesh.
4. Do not lap reinforcing mesh with 8" (203.2mm) of a corner.



R-007-04-11

Inside / Outside Corners

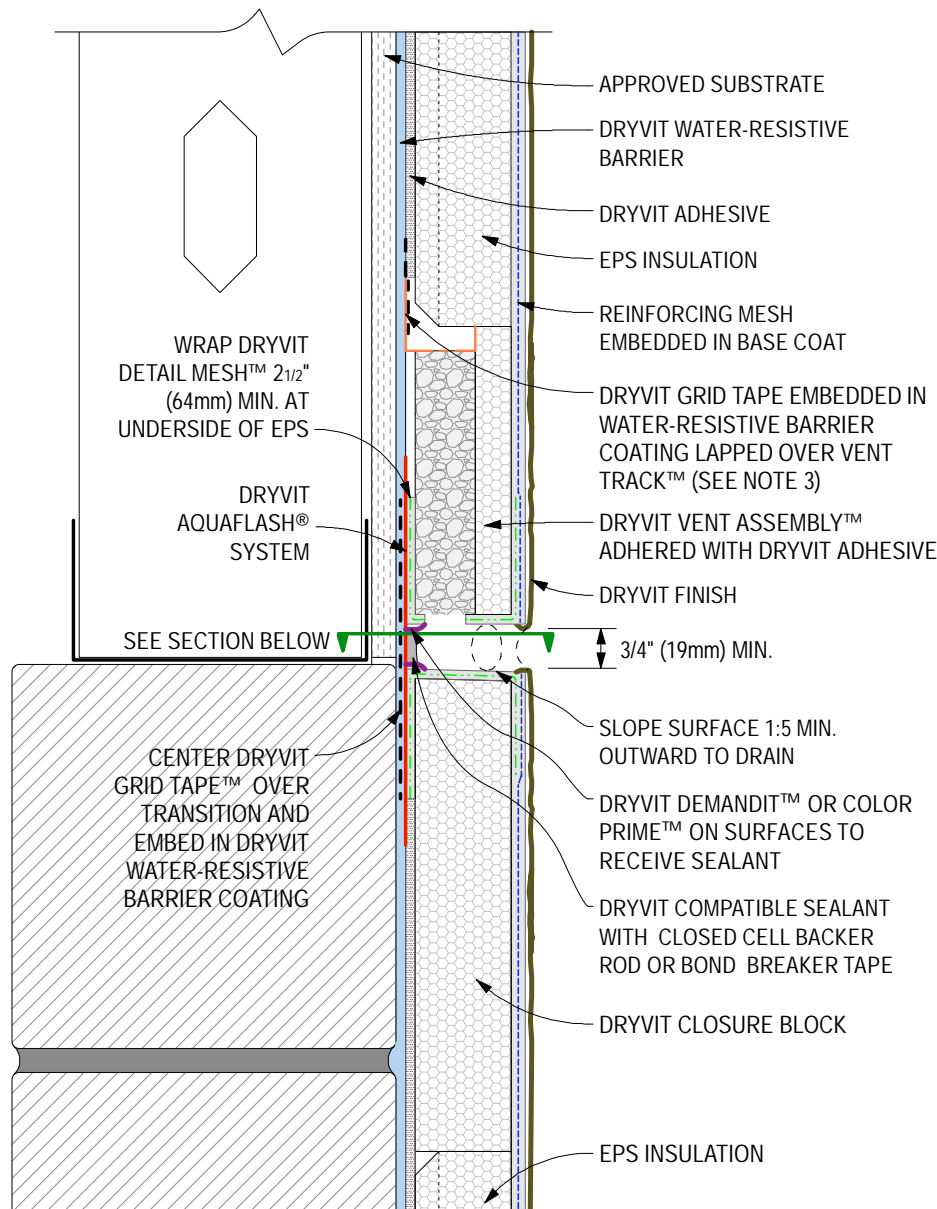


**Notes:**

1. These details are meant to apply to both Outsulation MD and Outsulation MD NC. Outsulation® MD NC requires the use of Primus® DM as the base coat/adhesive.
2. Dryvit recommends that ground floor applications and all facades exposed to abnormal stress, high traffic, or deliberate impact have the base coat reinforced with Panzer® 15 or 20 Mesh prior to Standard Plus Mesh. Location of high impact zones should be indicated in contract drawings.

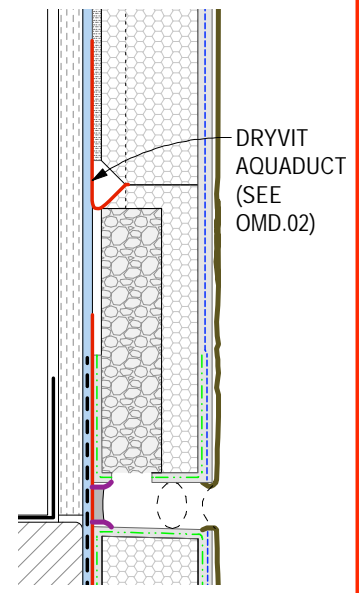
R-007-04-11

Outside Corner - High Impact

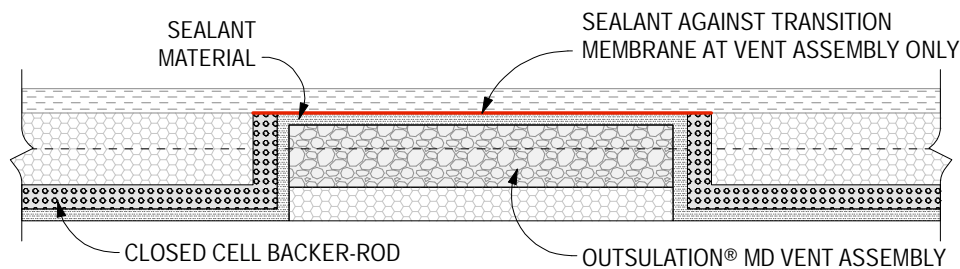


**Notes:**

1. These details are meant to apply to both Outsulation MD and Outsulation MD NC. Outsulation® MD NC requires the use of Primus® DM as the base coat/adhesive.
2. Dryvit recommends that ground floor applications and all facades exposed to abnormal stress, high traffic, or deliberate impact have the base coat reinforced with Panzer® 15 or 20 Mesh prior to Standard Plus Mesh. Location of high impact zones should be indicated in contract drawings.
3. Lightly sand surface of track to maximize adhesion.

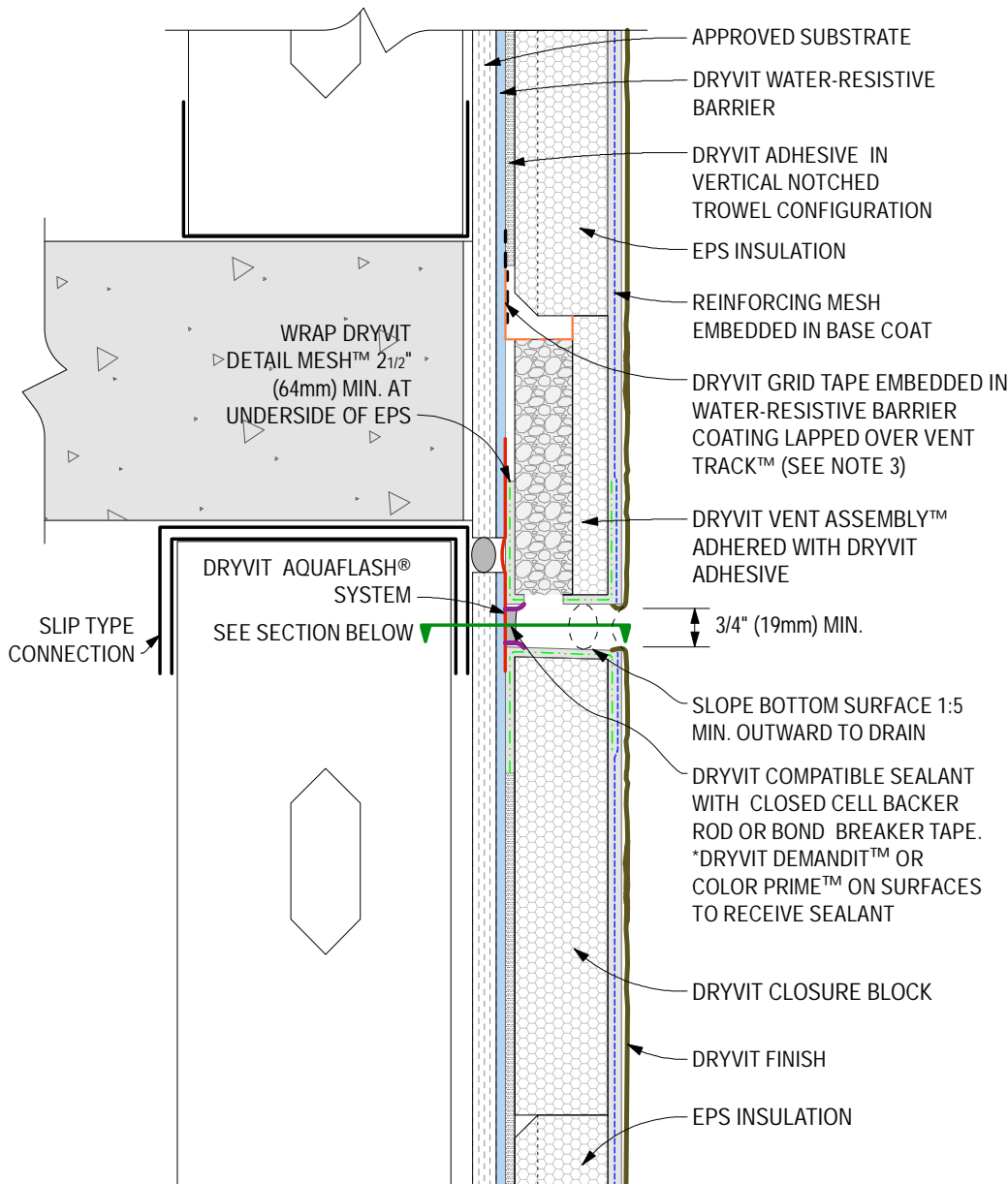


**AquaDuct Option**



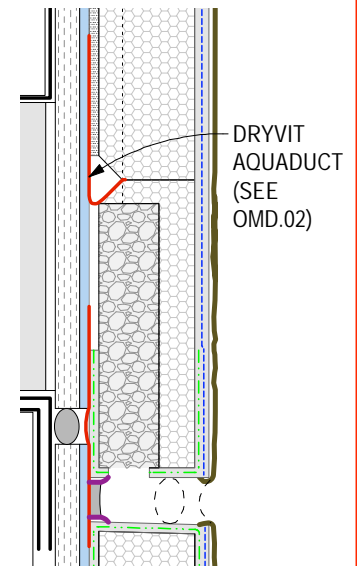
R-007-04-11

Horizontal Expansion Joint

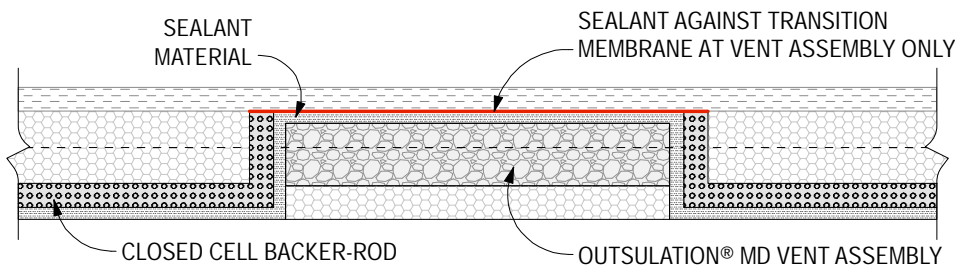


**Notes:**

1. These details are meant to apply to both Outsulation PD and Outsulation PD NC. Outsulation® PD NC requires the use of Primus® DM as the base coat/adhesive.
2. Dryvit recommends that ground floor applications and all facades exposed to abnormal stress, high traffic, or deliberate impact have the base coat reinforced with Panzer® 15 or 20 Mesh prior to Standard Plus Mesh. Location of high impact zones should be indicated in contract drawings.
3. Lightly sand surface of track to maximize adhesion.
4. Expansion joint in the Outsulation® MD System is necessary where significant differential movement is expected at floor lines.
5. Locate external sealant joint within 2" (50mm) of break in sheathing.

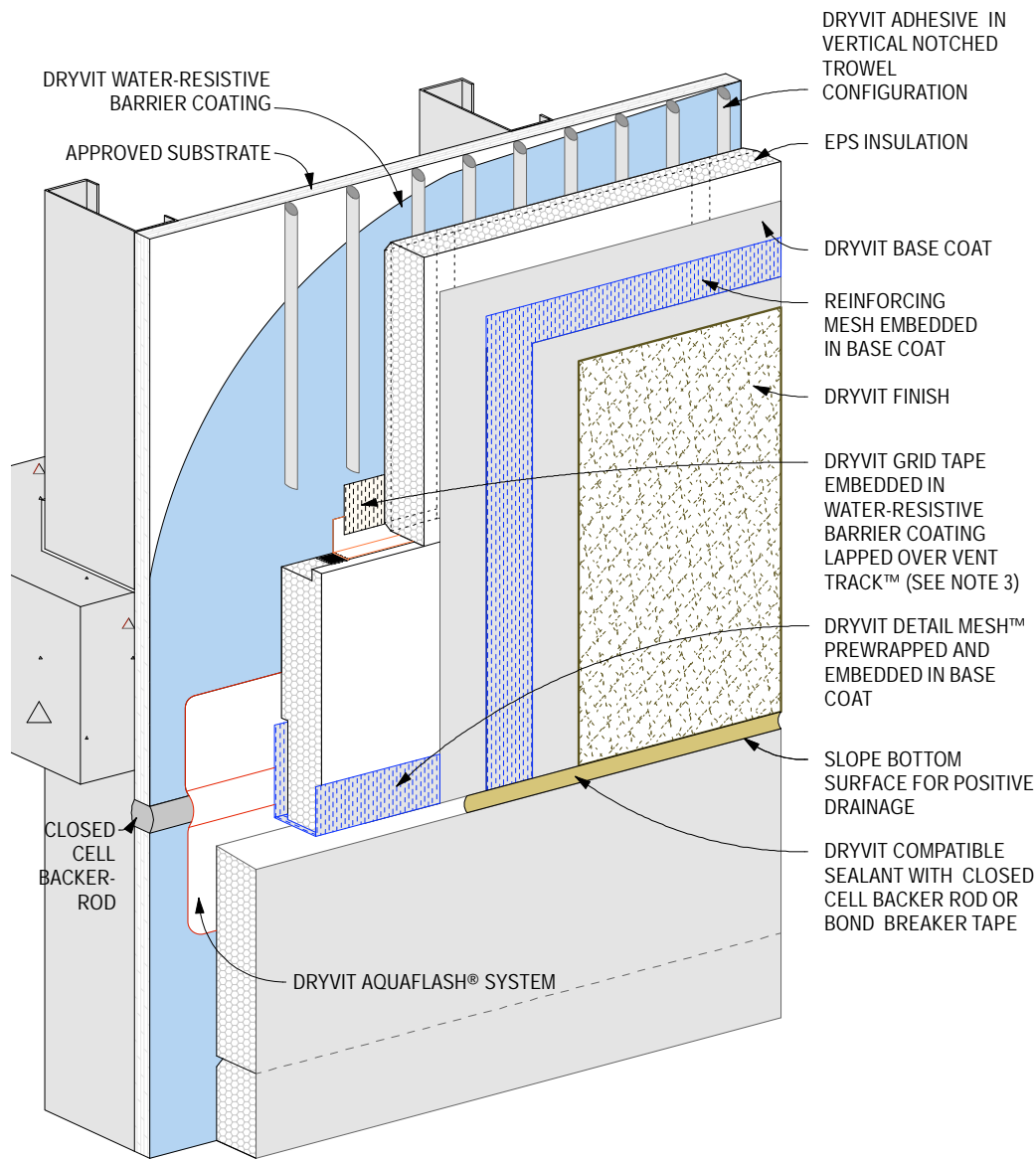


**AquaDuct Option**



R-007-04-11

Horizontal Slip Joint



**Notes:**

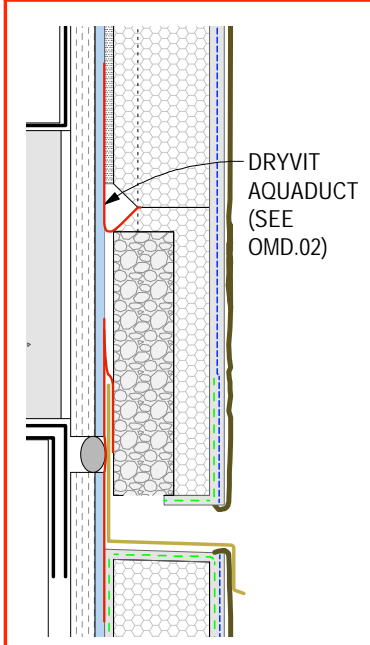
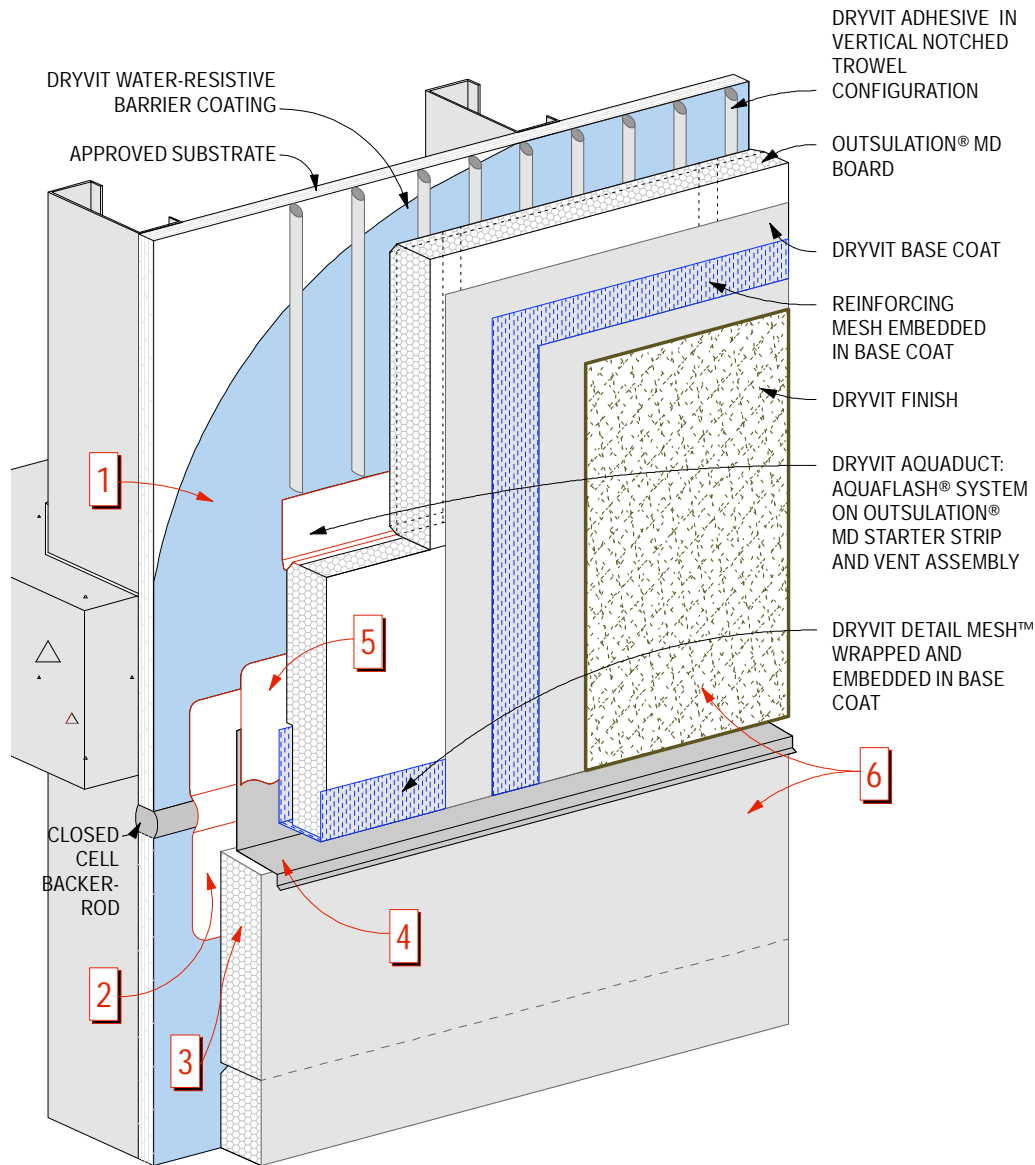
1. These details are meant to apply to both Outsulation MD and Outsulation MD NC. Outsulation® MD NC requires the use of Primus® DM as the base coat/adhesive.
2. Dryvit recommends that ground floor applications and all facades exposed to abnormal stress, high traffic, or deliberate impact have the base coat reinforced with Panzer® 15 or 20 Mesh prior to Standard Plus Mesh. Location of high impact zones should be indicated in contract drawings.
3. Lightly sand surface of track to maximize adhesion.

R-007-04-11

Horizontal Slip Joint - Extended 2D View

**Application Sequence:**

1. Apply coat of Dryvit water-resistant barrier (WRB) onto substrate.
2. Apply Dryvit AquaFlash® System over WRB coating at floorline joint.
3. Install the lower section of the Outsulation MD System inclusive of closure blocks, backwrapping and adhesive.
4. Install flashing over AquaFlash® System, resting onto lower section. Ensure that flashing is protected from any material spillage.
5. Apply a second layer of AquaFlash® System lapped over the flashing.
6. Install the remainder of the system as shown.



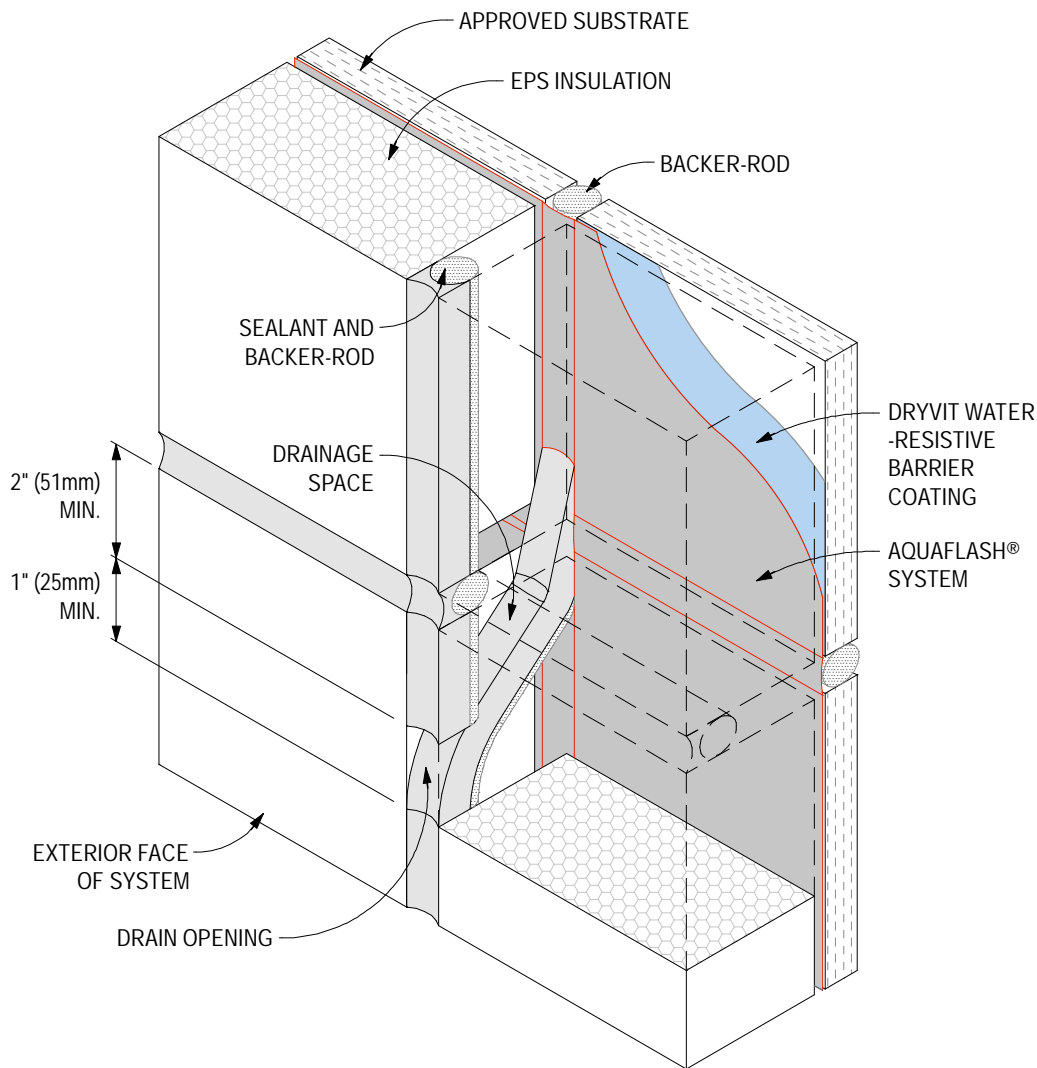
**Section View**

R-007-04-11

Horizontal Slip Joint - Open sealant with Flashing option

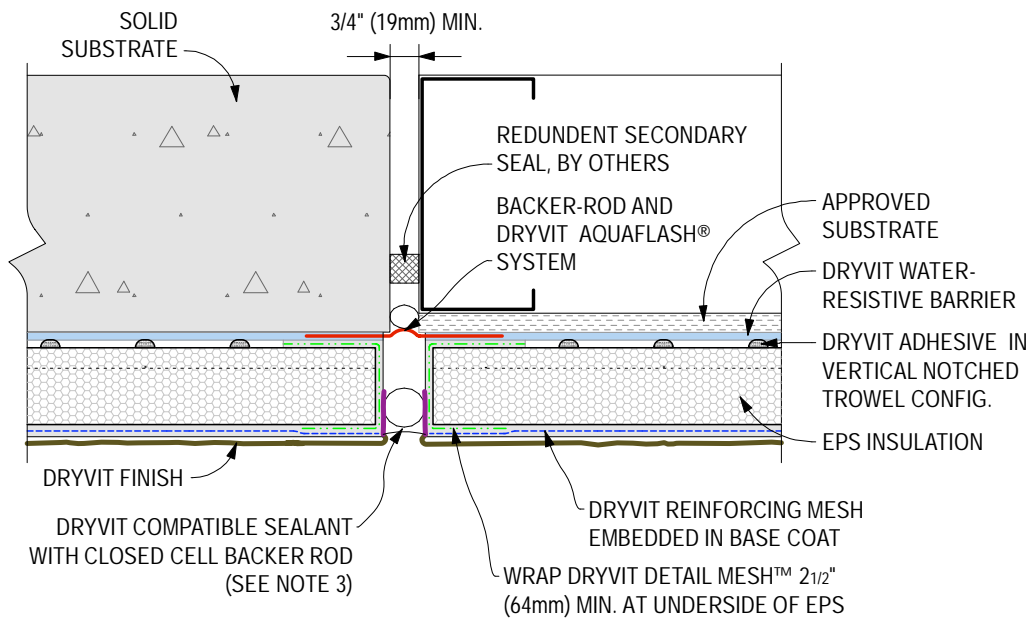
**Notes:**

1. These details are meant to apply to both Outsulation MD and Outsulation MD NC. Outsulation® MD NC requires the use of Primus® DM as the base coat/adhesive.
2. Dryvit recommends that ground floor applications and all facades exposed to abnormal stress, high traffic, or deliberate impact have the base coat reinforced with Panzer® 15 or 20 Mesh prior to Standard Plus Mesh. Location of high impact zones should be indicated in contract drawings.



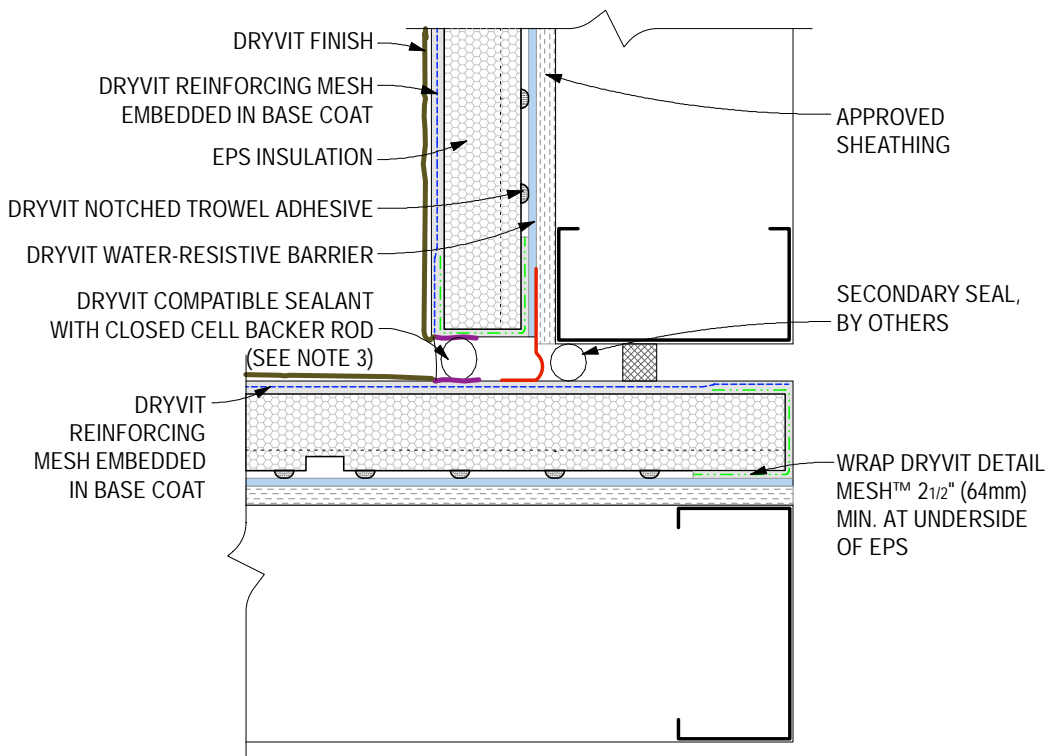
R-007-04-11

Two-Stage Joint



**Notes:**

1. These details are meant to apply to both Outsulation MD and Outsulation MD NC. Outsulation® MD NC requires the use of Primus® DM as the base coat/adhesive.
2. Dryvit recommends that ground floor applications and all facades exposed to abnormal stress, high traffic, or deliberate impact have the base coat reinforced with Panzer® 15 or 20 Mesh prior to Standard Plus Mesh. Location of high impact zones should be indicated in contract drawings.
3. Dryvit Demandit™ or Color Prime™ on surfaces to receive sealant.

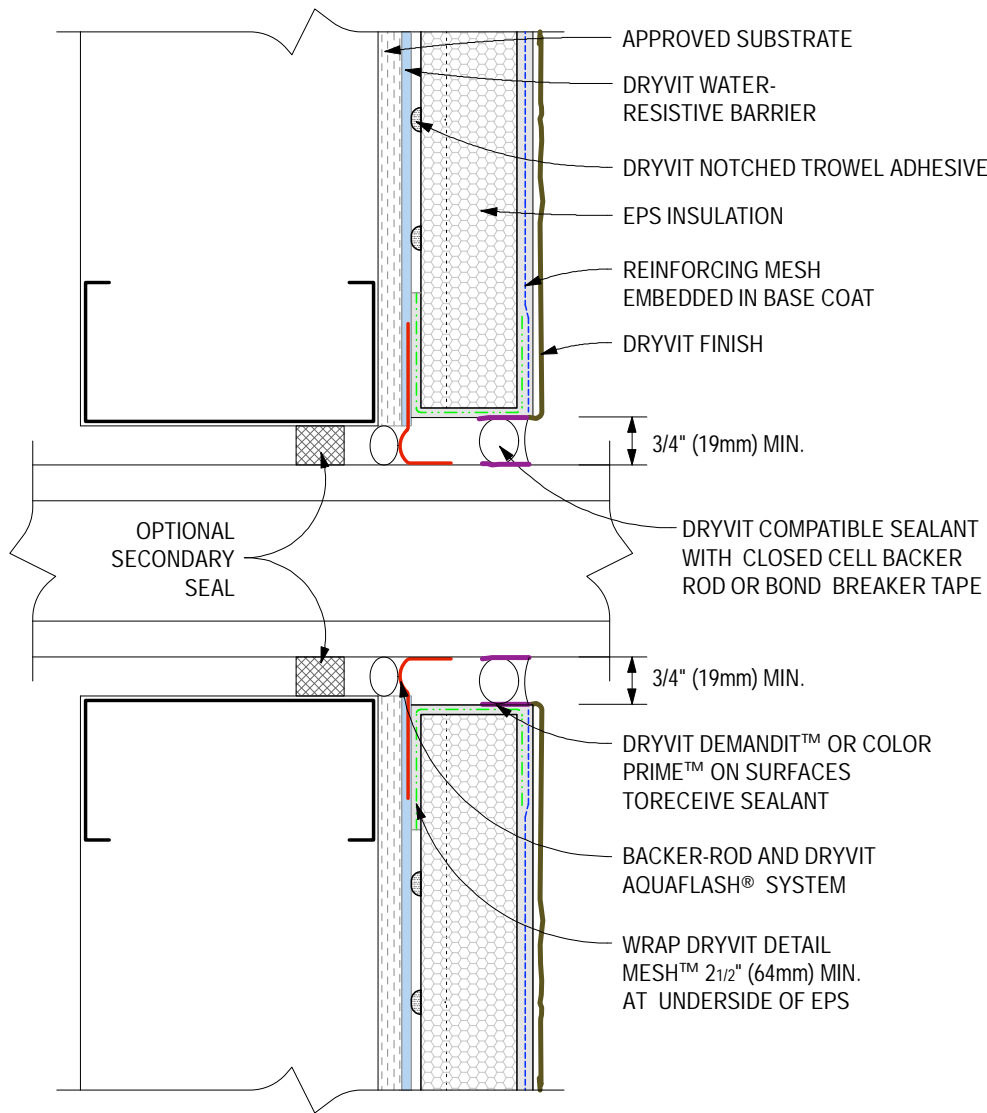


R-007-04-11

Structural Expansion Joints

**Notes:**

1. These details are meant to apply to both Outsulation MD and Outsulation MD NC. Outsulation® MD NC requires the use of Primus® DM as the base coat/adhesive.
2. Dryvit recommends that ground floor applications and all facades exposed to abnormal stress, high traffic, or deliberate impact have the base coat reinforced with Panzer® 15 or 20 Mesh prior to Standard Plus Mesh. Location of high impact zones should be indicated in contract drawings.

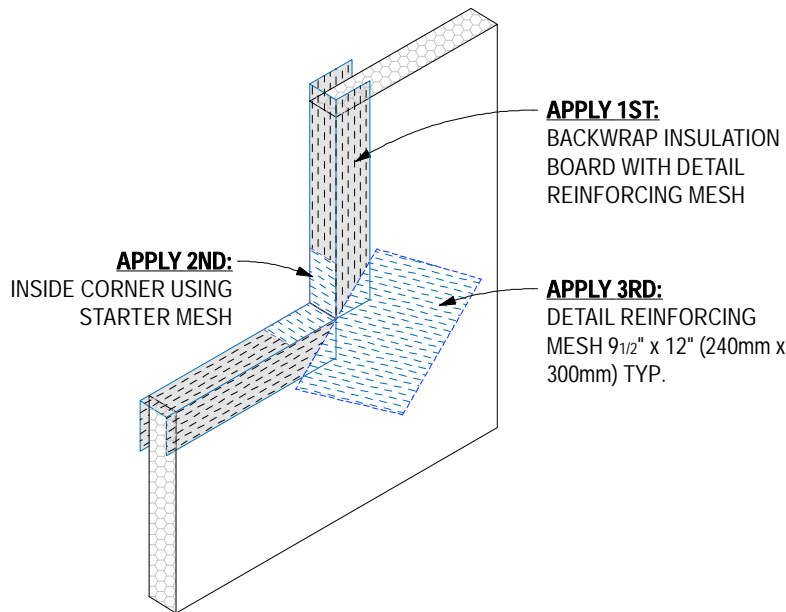
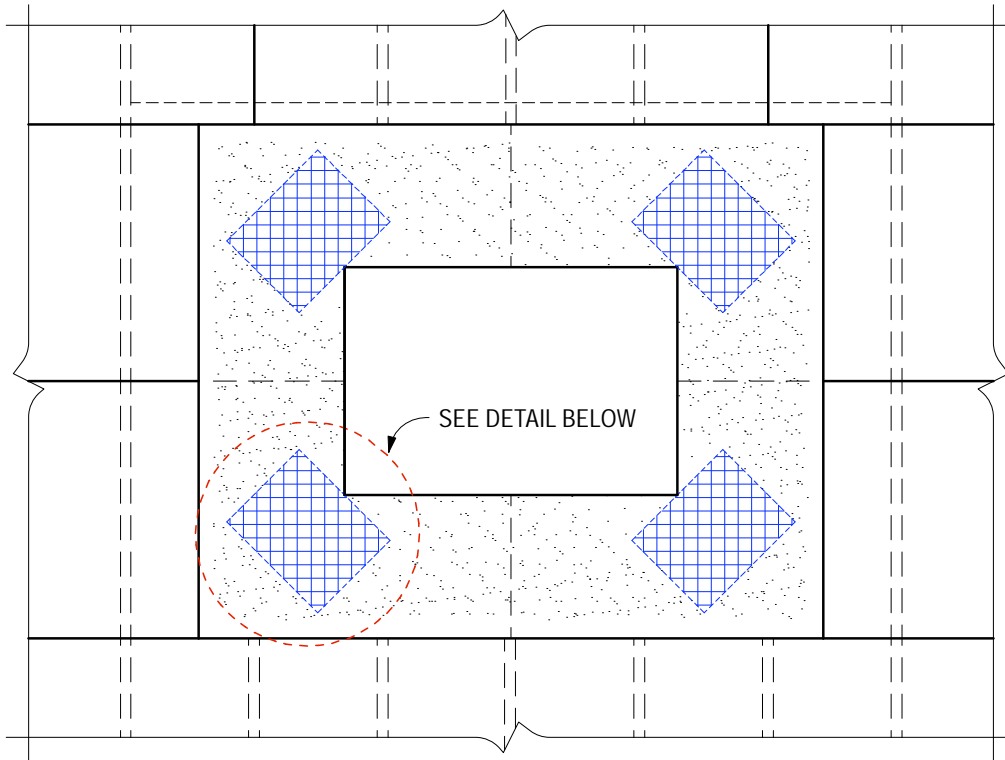


R-007-04-11

Penetrations - Cross Section

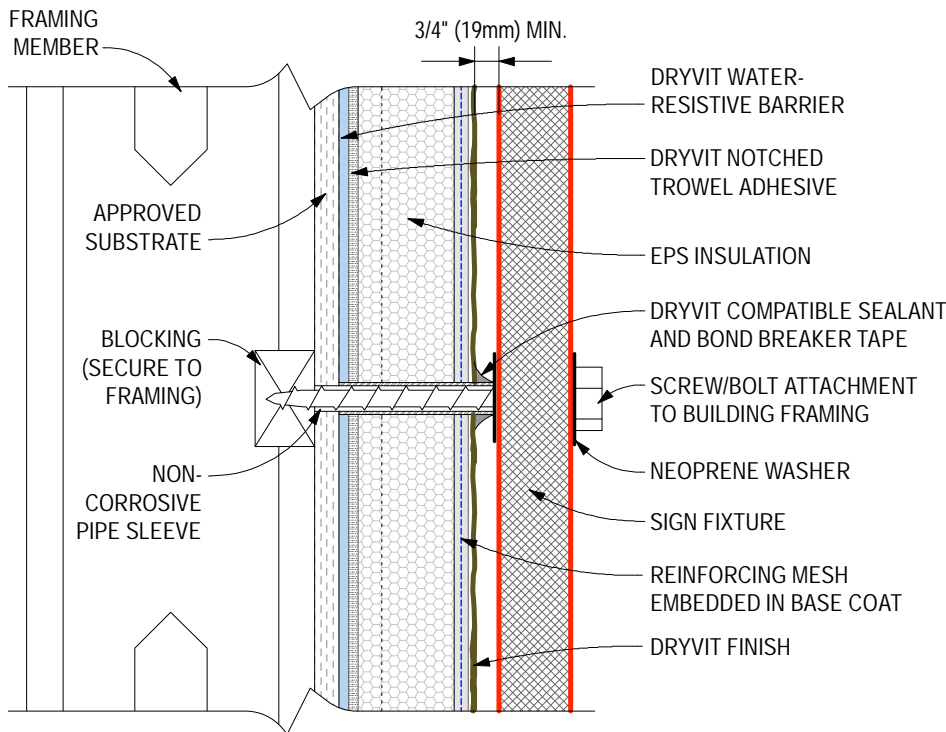
**Notes:**

1. These details are meant to apply to both Outsulation MD and Outsulation MD NC. Outsulation® MD NC requires the use of Primus® DM as the base coat/adhesive.
2. Dryvit recommends that ground floor applications and all facades exposed to abnormal stress, high traffic, or deliberate impact have the base coat reinforced with Panzer® 15 or 20 Mesh prior to Standard Plus Mesh. Location of high impact zones should be indicated in contract drawings.



R-007-04-11

Insulation Layout - Openings



**Notes:**

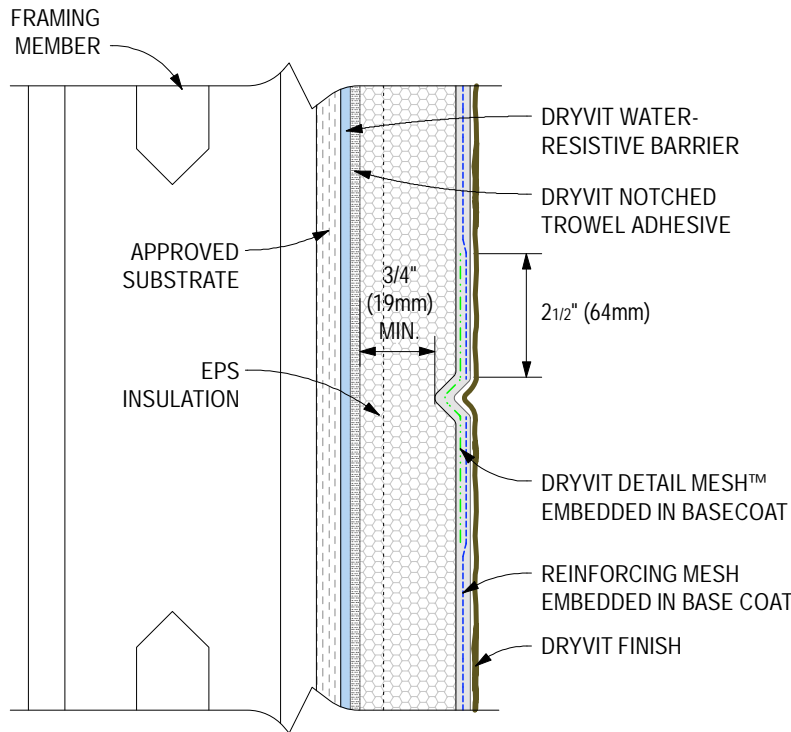
1. These details are meant to apply to both Outsulation MD and Outsulation MD NC. Outsulation® MD NC requires the use of Primus® DM as the base coat/adhesive.
2. Dryvit recommends that ground floor applications and all facades exposed to abnormal stress, high traffic, or deliberate impact have the base coat reinforced with Panzer® 15 or 20 Mesh prior to Standard Plus Mesh. Location of high impact zones should be indicated in contract drawings.
3. Entire perimeter of pipe sleeve is caulked to prevent water entry into wall.

**Installation Instructions:**

1. Pre-drill through EIFS stopping at water-resistive barrier (WRB).
2. Cut sleeve to equal depth of system from WRB to outside face.
3. Gun neutral cure silicone sealant into hole and insert sleeve.
4. While sealant is wet, install fastener and tool sealant around edges as shown.

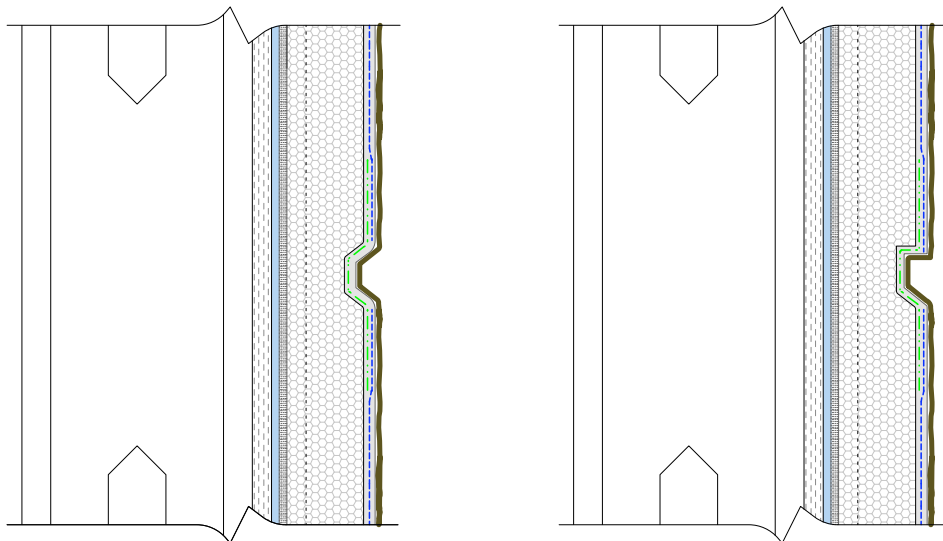
R-007-04-11

Sign Attachment



**Notes:**

1. These details are meant to apply to both Outsulation MD and Outsulation MD NC. Outsulation® MD NC requires the use of Primus® DM as the base coat/adhesive.
2. Dryvit recommends that ground floor applications and all facades exposed to abnormal stress, high traffic, or deliberate impact have the base coat reinforced with Panzer® 15 or 20 Mesh prior to Standard Plus Mesh. Location of high impact zones should be indicated in contract drawings.
3. Bottom ends of reveals are to be sloped for positive drainage.

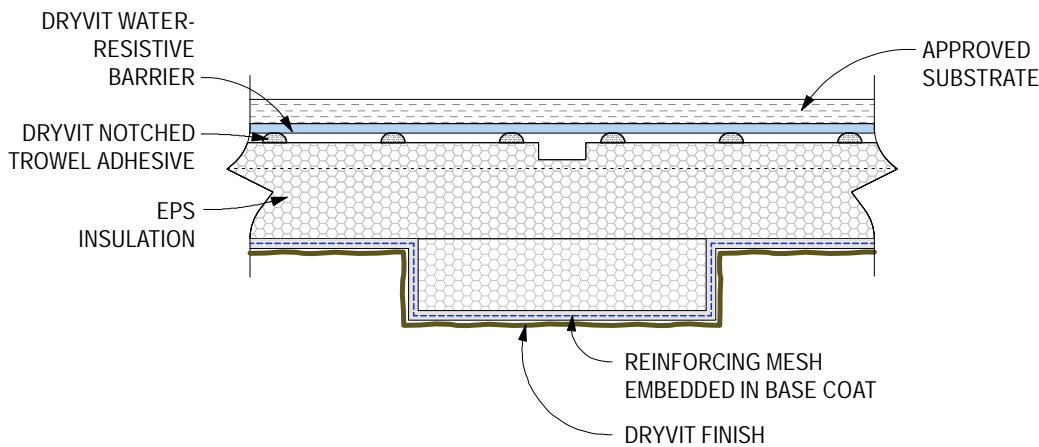
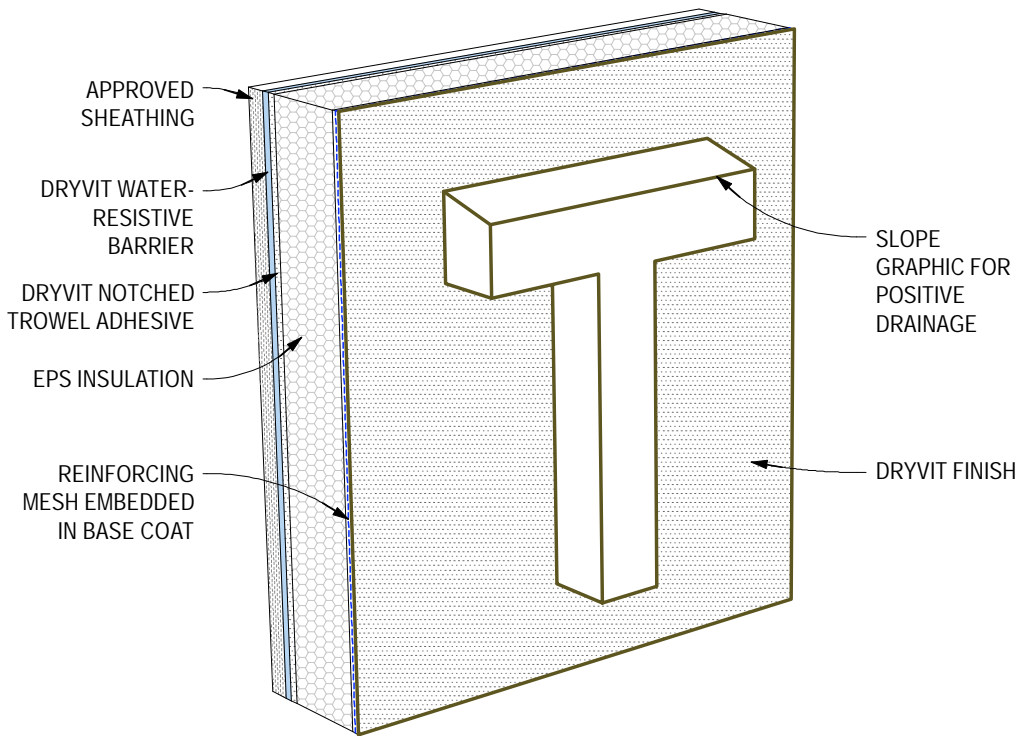


R-007-04-11

Aesthetic Reveals

**Notes:**

1. These details are meant to apply to both Outsulation MD and Outsulation MD NC. Outsulation® MD NC requires the use of Primus® DM as the base coat/adhesive.
2. Dryvit recommends that ground floor applications and all facades exposed to abnormal stress, high traffic, or deliberate impact have the base coat reinforced with Panzer® 15 or 20 Mesh prior to Standard Plus Mesh. Location of high impact zones should be indicated in contract drawings.
3. Bottom ends of reveals are to be sloped for positive drainage.

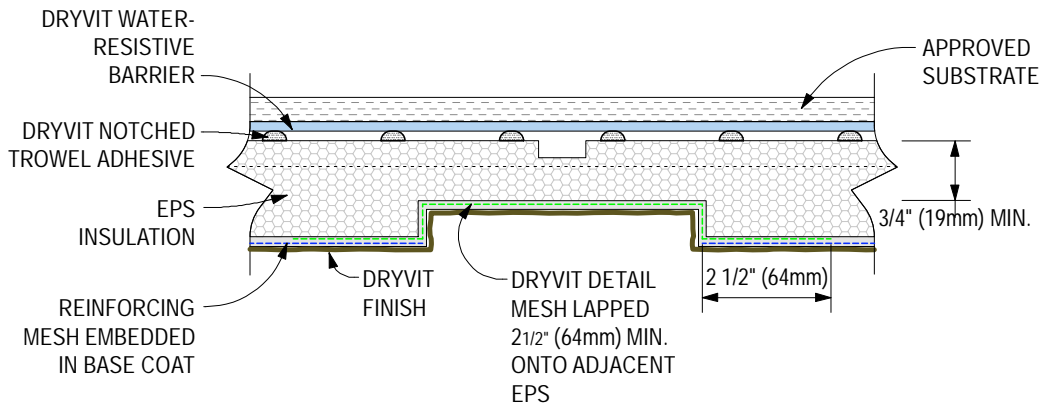
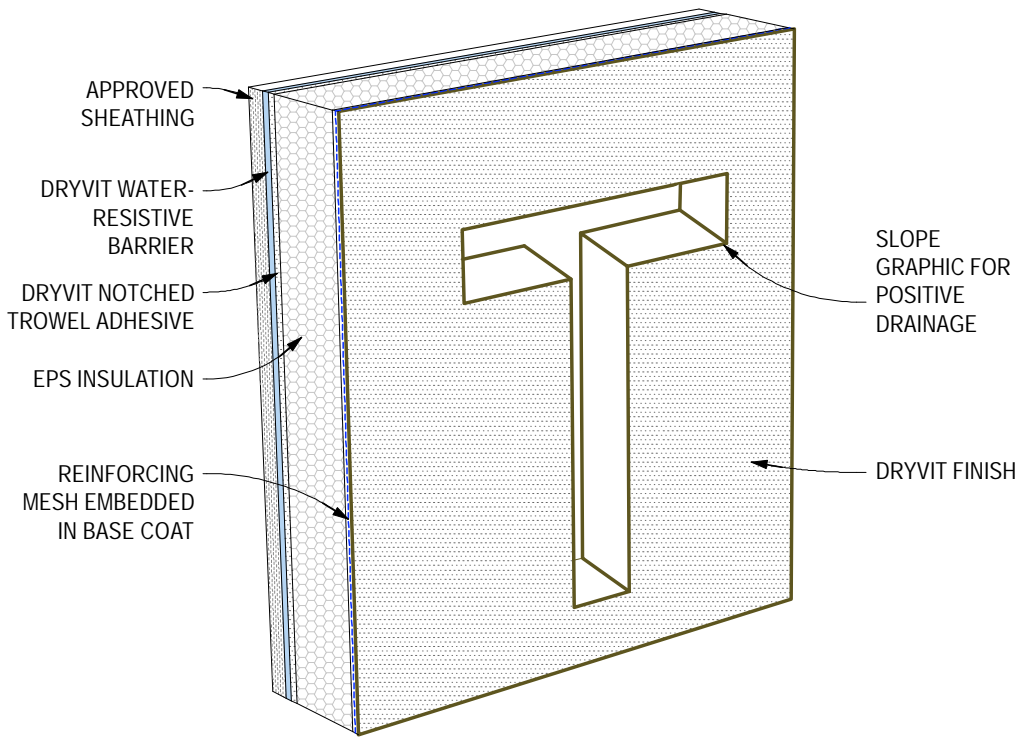


R-007-04-11

Projecting Graphics

**Notes:**

1. These details are meant to apply to both Outsulation Plus and Outsulation MD NC. Outsulation® MD NC requires the use of Primus® DM as the base coat/adhesive.
2. Dryvit recommends that ground floor applications and all facades exposed to abnormal stress, high traffic, or deliberate impact have the base coat reinforced with Panzer® 15 or 20 Mesh prior to Standard Plus Mesh. Location of high impact zones should be indicated in contract drawings.



R-007-04-11

Recessed Graphics