

**Application Sequence and Notes:**

1. Apply water-resistive barrier (WRB) over sheathing and into rough opening.

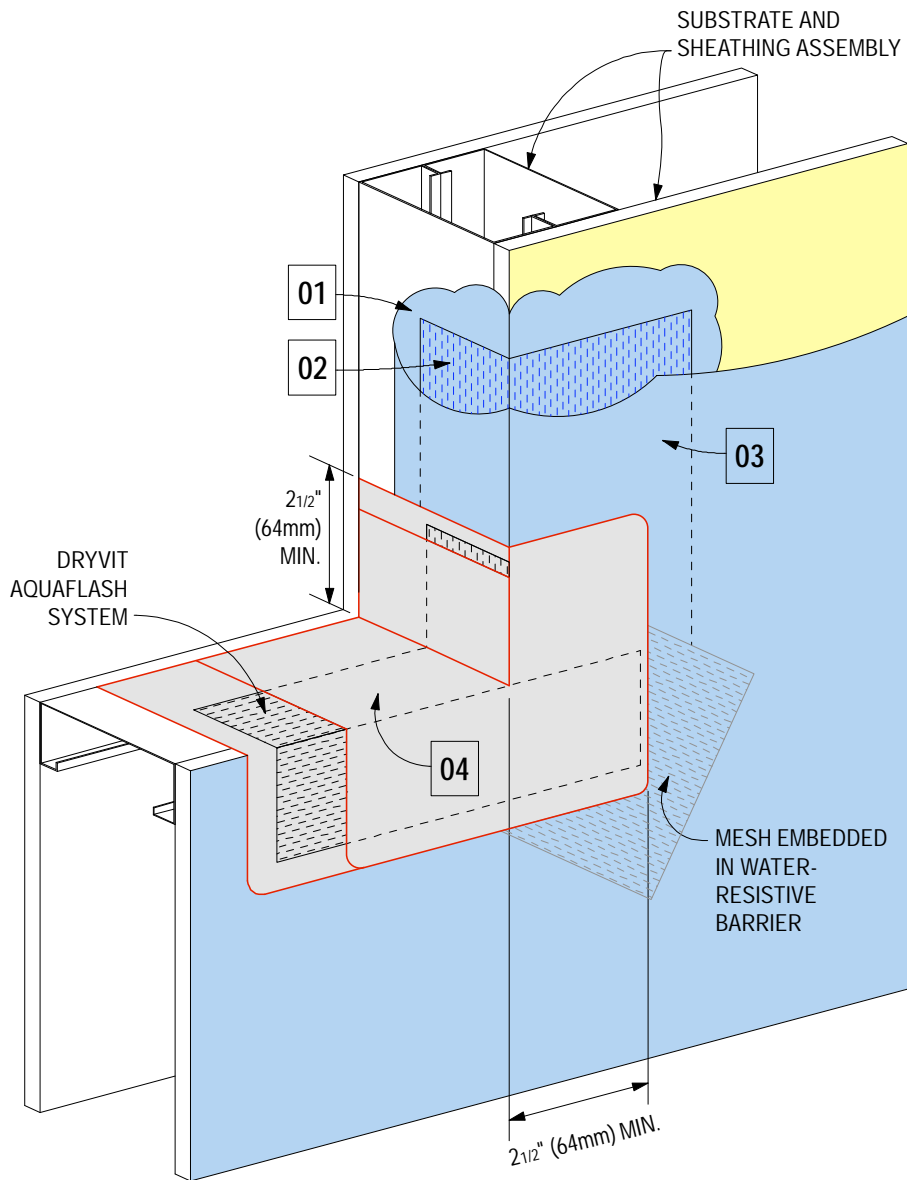
2. Embed Detail Mesh™ into WRB, stopping at sill. Embed diagonal mesh as shown at all corners.

3. Once embedment is complete, apply WRB over remainder of the substrate as illustrated.

4. Apply AquaFlash® and AquaFlash mesh as per DSC196 - Sills only if WRB is applied around the balance of the rough opening.

AquaFlash is applied using a brush or deep-nap roller. Embed AquaFlash Mesh into wet AquaFlash and allow to set.

Apply second coat fully covering the AquaFlash Mesh.



R-007-04-11

Protection of Rough Openings