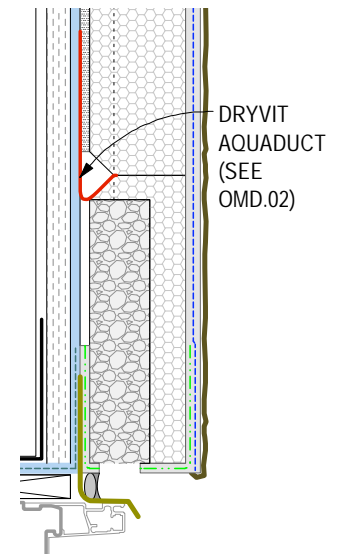
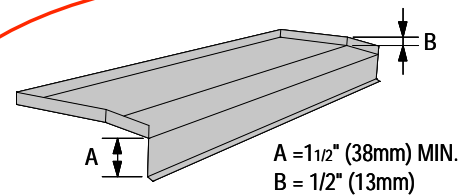


**Notes:**

1. These details are meant to apply to both Outsulation MD and Outsulation MD NC. Outsulation® MD NC requires the use of Primus® DM as the base coat/adhesive.
2. Dryvit recommends that ground floor applications and all facades exposed to abnormal stress, high traffic, or deliberate impact have the base coat reinforced with Panzer® 15 or 20 Mesh prior to Standard Plus Mesh. Location of high impact zones should be indicated in contract drawings.
3. Lightly sand surface of track to maximize adhesion.



**AquaDuct Option**



**Sill Pan Flashing Detail**

R-007-04-11

Head / Sill - For window spans 10' or greater