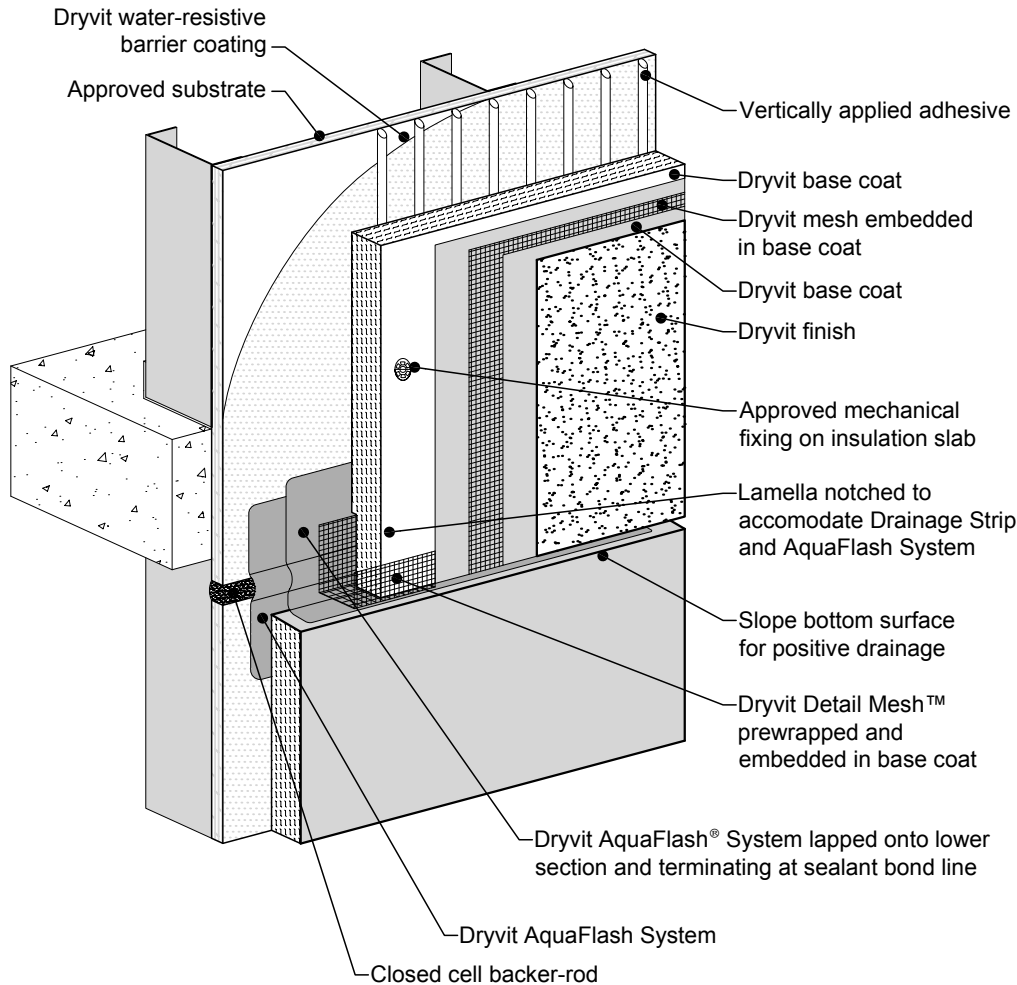


Notes:

1. Dryvit recommends that ground floor applications and all facades exposed to abnormal stress, high traffic, or deliberate impact have the base coat reinforced with Panzer® 15 or 20 mesh prior to Standard Plus mesh. Location of high impact zones should be indicated on contract drawings.
2. Install Mechanical Fixings as per EXS.0.0.03.



R-002-07-08

Horizontal Slip Joint - Extended 2d View