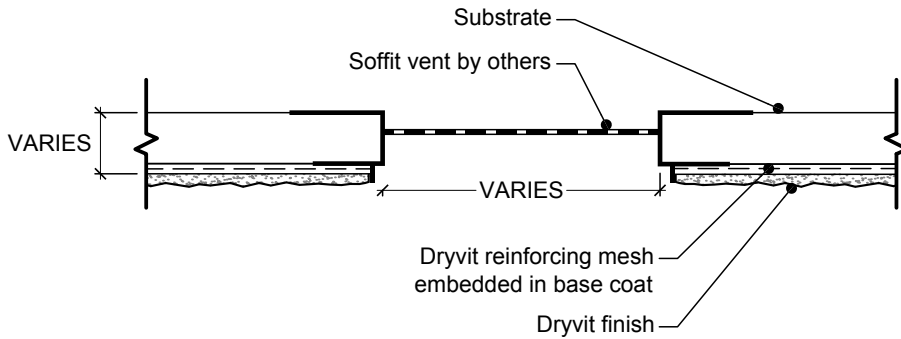
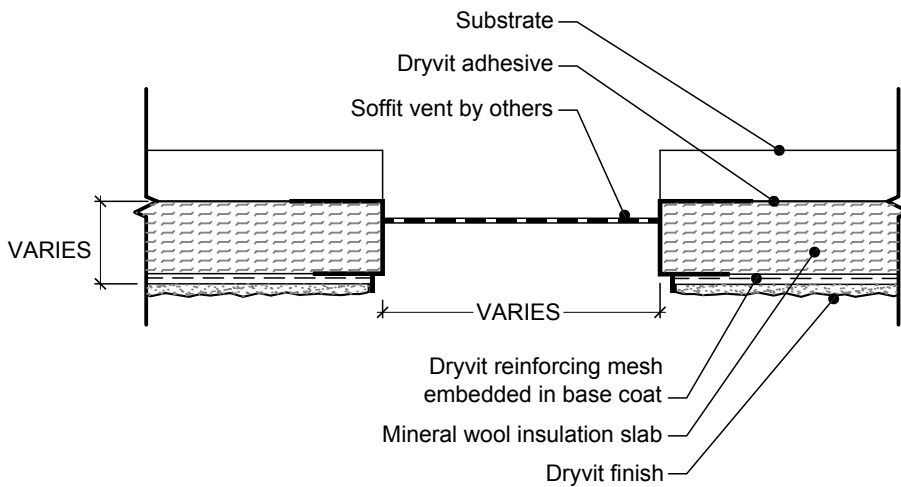


Notes:

1. Dryvit recommends that ground floor applications and all facades exposed to abnormal stress, high traffic, or deliberate impact have the base coat reinforced with Panzer® 15 or 20 mesh prior to Standard Plus mesh. Location of high impact zones should be indicated on contract drawings.
2. Caulk all butt joints, intersections, and end of vents.
3. Install Mechanical Fixings as per EXS.0.0.03.



Uninsulated



Insulated

R-002-07-08

Soffit vent