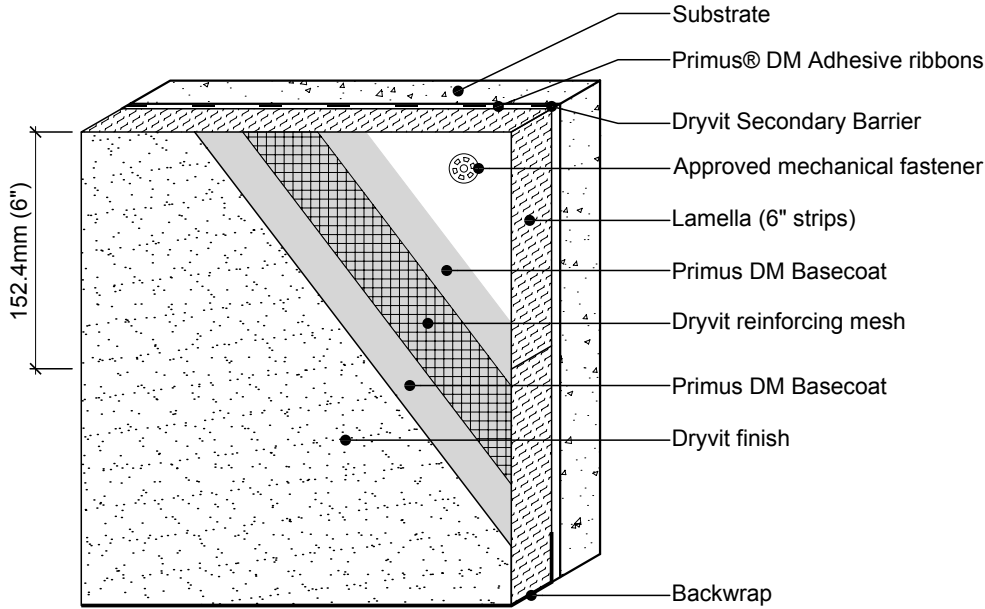


Exsulation L5000
System Installation Details

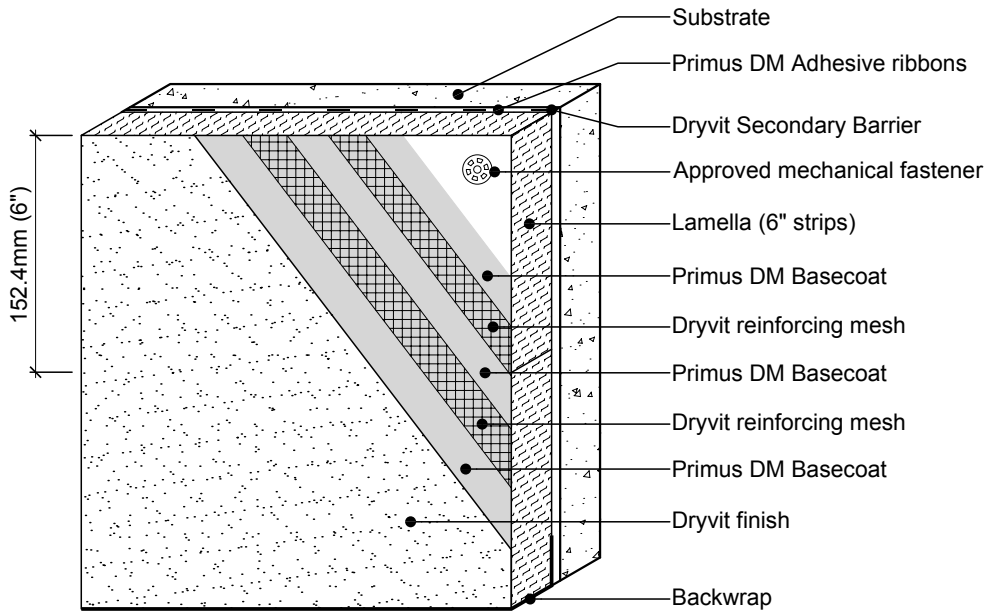
DETAIL	NOTE
EXL.0.0.01 NORMAL AND HIGH IMPACT	<p>DRYVIT MAKES NO REPRESENTATION REGARDING CONFORMITY OF ITS SUGGESTIONS TO APPLICABLE BUILDING CODES, ENGINEERING CRITERIA, SPECIFIC APPLICATIONS OR PROJECT LOCATIONS. ALL COMPONENTS INDICATED IN ILLUSTRATIONS, AS WELL AS OTHERS THAT MAY BE REQUIRED FOR THE INTEGRITY OF THE SYSTEM SHALL BE DESIGNED, DETAILED AND ENGINEERED BY REPRESENTATIVES OF THE ARCHITECT, OWNER OR CONTRACTOR TO BE IN CONFORMANCE WITH MODEL CODES, ARCHITECTURAL AND ENGINEERING REQUIREMENTS PERTAINING TO SPECIFIC BUILDING PROJECTS.</p> <p>DRYVIT MAKES NO WARRANTY, EXPRESSED OR IMPLIED, AS TO THE ARCHITECTURAL DESIGN, ENGINEERING, OR WORKMANSHIP OF PROJECTS UTILIZING DRYVIT SYSTEMS OR PRODUCTS.</p> <p>THE LIABILITIES OF DRYVIT SHALL BE AS STATED IN THE EXSULATION L5000 LIMITED COMMERCIAL WARRANTY. CONTACT DRYVIT FOR A FULL AND COMPLETE COPY OF THE WARRANTY.</p>
EXL.0.0.02 LAMELLA SLAB LAYOUT	
EXL.0.0.03 FOUNDATION WITH DRAINAGE STRIP - EXTENDED 2D VIEW	
EXL.0.0.04 HEAD/SILL	
EXL.0.0.05 HEAD/SILL FOR SELF FLASHING WINDOW OPTIONS	
EXL.0.0.06 PROTECTION OF ROUGH OPENINGS	
EXL.0.0.07 ROUGH OPENING AND SILL PREPARATION - AQUAFLASH® SYSTEM	
EXL.0.0.08 JAMB	
EXL.0.0.09 PARAPET - CAP FLASHING	
EXL.0.0.10 PARAPET/ WALL TERMINATION	
EXL.0.0.11 PARAPET - SOLID SUBSTRATE	
EXL.0.0.12 SOFFIT/FASCIA INTERSECTION	
EXL.0.0.13 SOFFIT - UNINSULATED	
EXL.0.0.14 INSIDE/OUTSIDE CORNERS	
EXL.0.0.15 OUTSIDE CORNER - HIGH IMPACT	
EXL.0.0.16A FLOORLINE DETAIL - APPLICATION SEQUENCE	
EXL.0.0.16B HORIZONTAL SLIP JOINT - EXTENDED 2D VIEW	
EXL.0.0.17 HORIZONTAL SLIP JOINT	
EXL.0.0.18 TWO-STAGE JOINT - EXTENDED 2D VIEW	
EXL.0.0.19 STRUCTURAL EXPANSION JOINTS	
EXL.0.0.20 PENETRATIONS	
EXL.0.0.21 WALL PENETRATIONS	
EXL.0.0.22 SIGN ATTACHMENT	
EXL.0.0.23 AESTHETIC REVEALS	
EXL.0.0.24 HORIZONTAL JOINT AT STONE VENEER	
EXL.0.0.25 SOFFIT VENT	

Notes:

1. Dryvit recommends that ground floor applications and all facades exposed to abnormal stress, high traffic, or deliberate impact have the base coat reinforced with Panzer® 15 or 20 Mesh prior to Standard Plus Mesh. Location of high impact zones should be indicated in contract drawings.



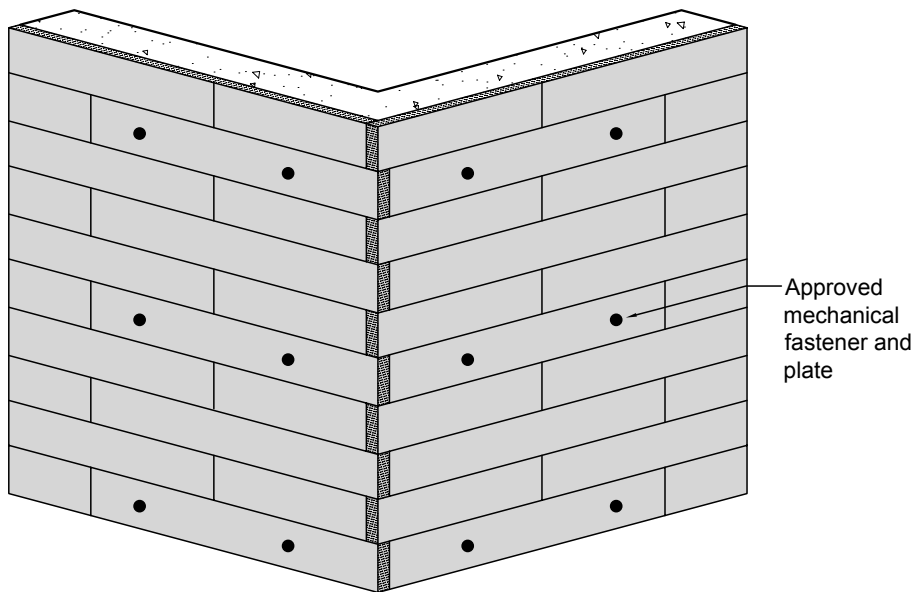
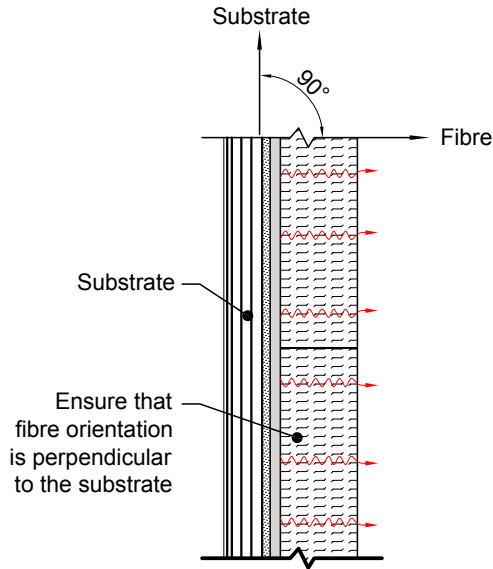
NORMAL IMPACT



HIGH IMPACT

R-002-07-08

Normal and High Impact



Notes:

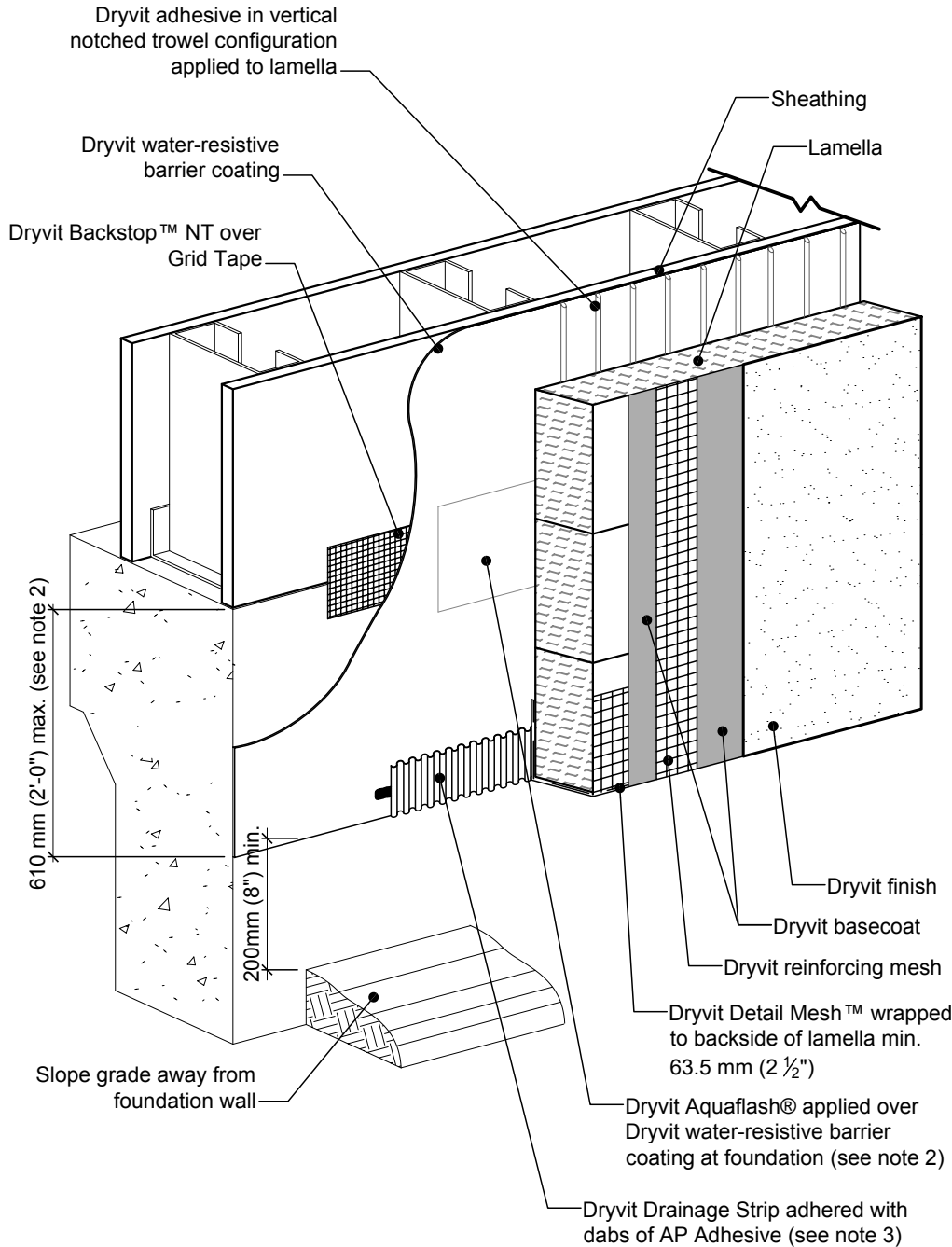
1. Fasteners required in conjunction with adhesive on first row and every fourth row thereafter as shown.
2. Standard PB fastener and washer required.

R-002-07-08

Lamella Slab Layout

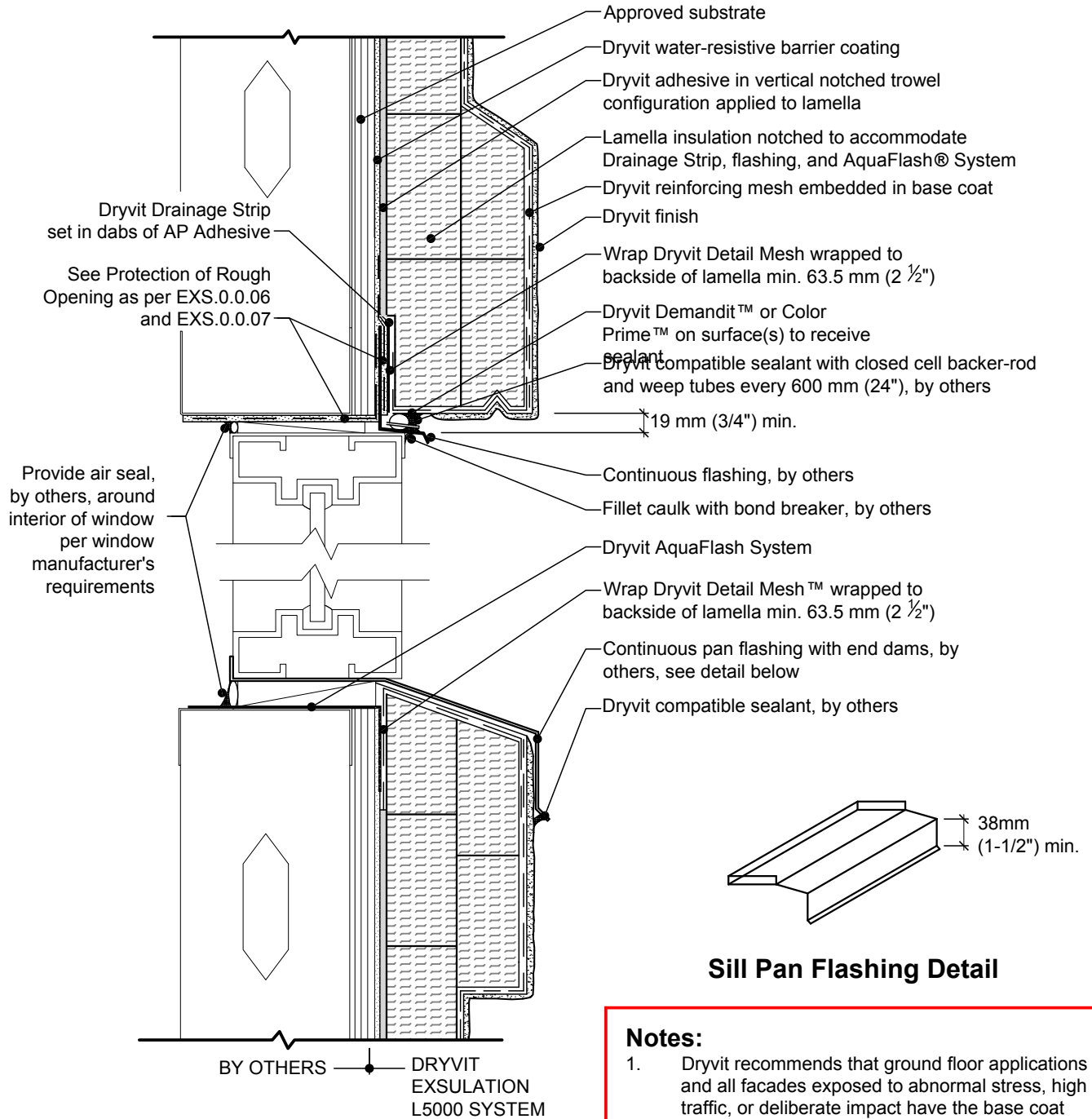
Notes:

1. Dryvit recommends that ground floor applications and all facades exposed to abnormal stress, high traffic, or deliberate impact have the base coat reinforced with Panzer® 15 or 20 Mesh prior to Standard Plus Mesh. Location of high impact zones should be indicated in contract drawings.
2. Expansion joint is required along top of foundation if 610mm (2'-0") dimension is exceeded.
3. Ensure bottom edge of Drainage Strip is left free to drain.
4. Notched trowel size minimum of 1/2" x 1/2", by maximum 2" on centre.
5. Adhesive applied to the lamellas.



R-002-07-08

Foundation with Drainage Strip - Extended 2d View

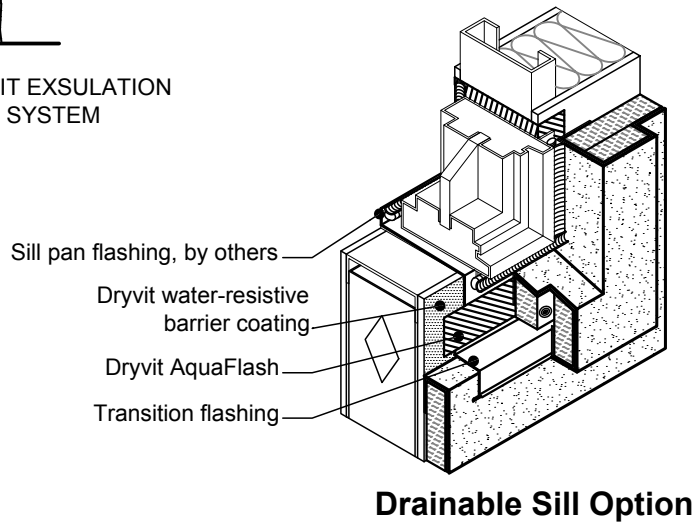
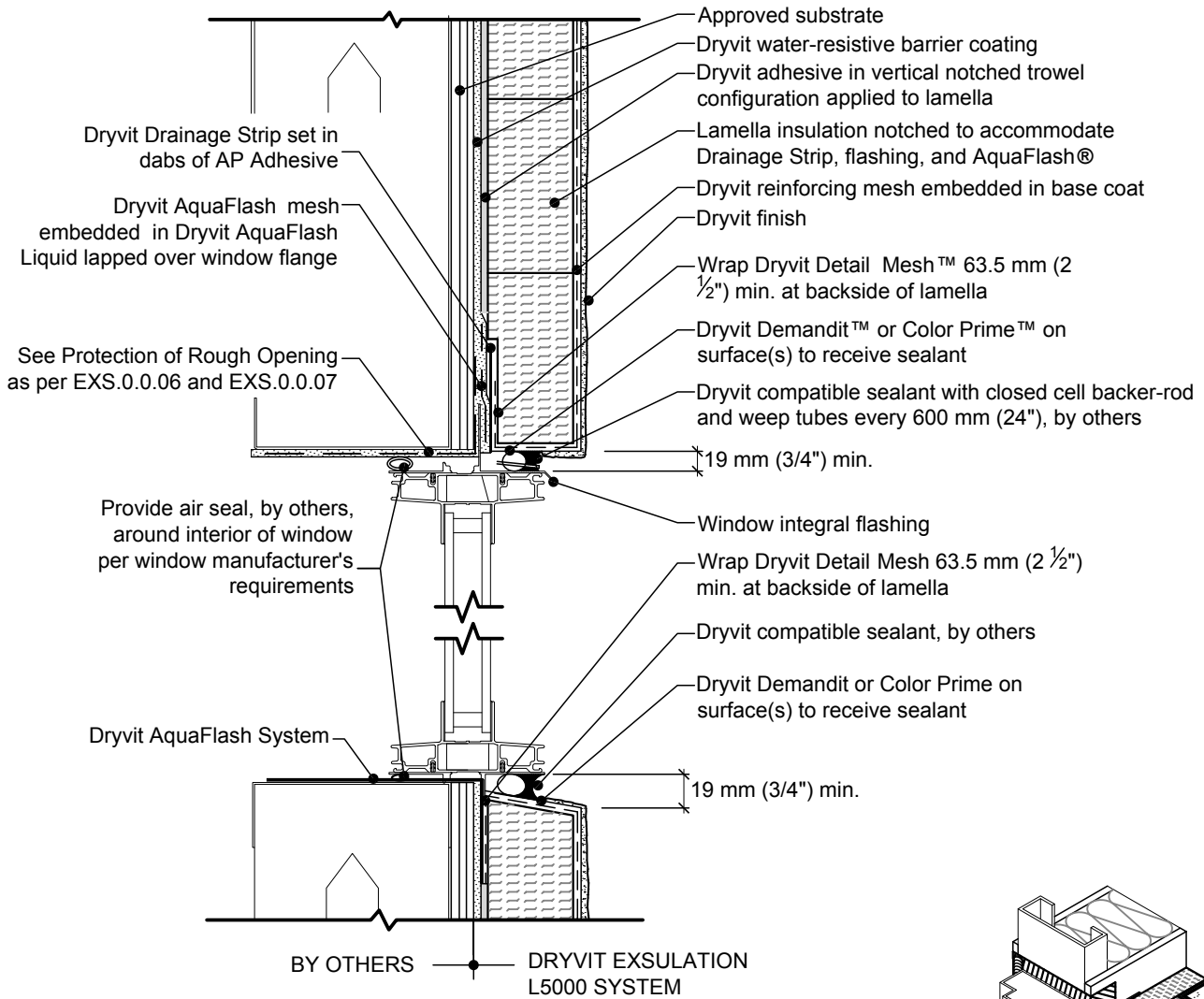


Notes:

1. Dryvit recommends that ground floor applications and all facades exposed to abnormal stress, high traffic, or deliberate impact have the base coat reinforced with Panzer® 15 or 20 mesh prior to Standard Plus mesh. Location of high impact zones should be indicated on contract drawings.

R-002-07-08

Head/Sill



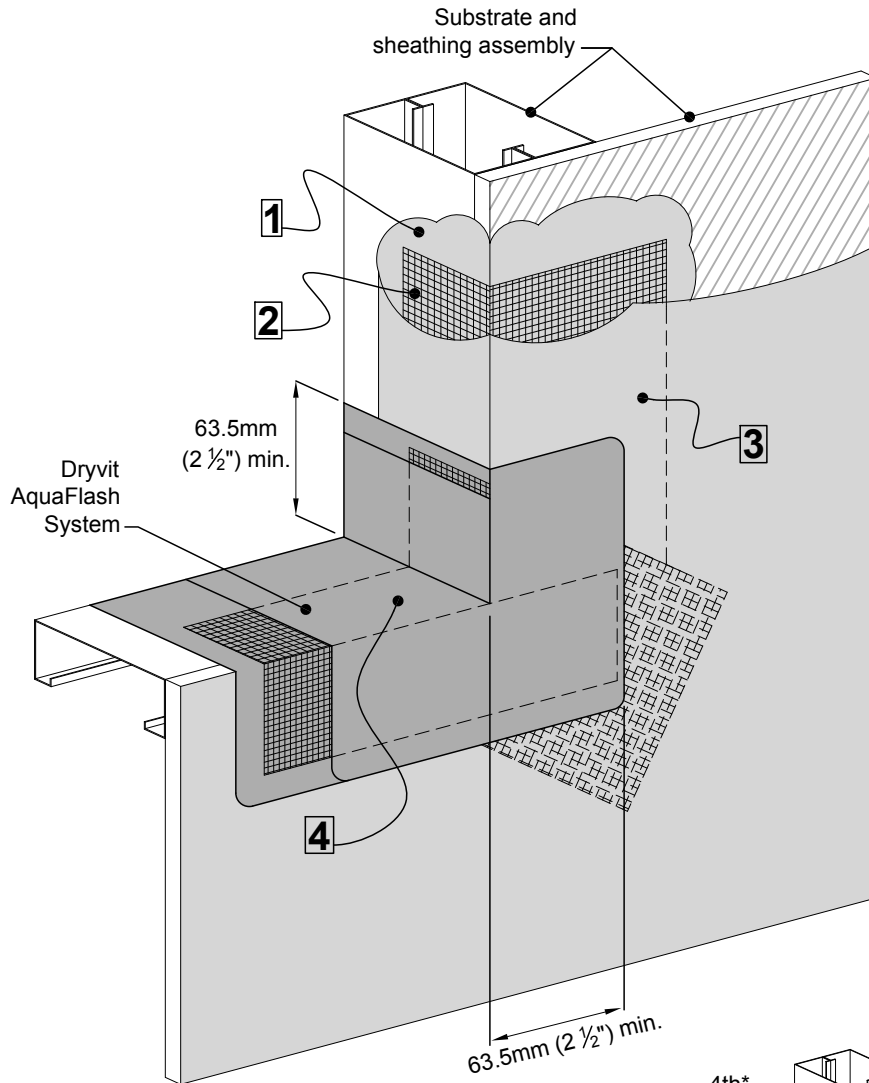
Drainable Sill Option

Notes:

1. Dryvit recommends that ground floor applications and all facades exposed to abnormal stress, high traffic, or deliberate impact have the base coat reinforced with Panzer® 15 or 20 mesh prior to Standard Plus mesh. Location of high impact zones should be indicated on contract drawings.
2. Additional head flashing may be necessary for windows that are not self flashing.

R-002-07-08

Head/Sill for Self Flashing Window Options



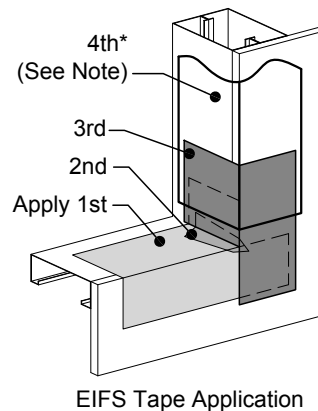
Application Sequence and Notes:

1. Apply WRB over sheathing and into rough opening.
2. Embed Detail Mesh™ into WRB, stopping at sill. Embed diagonal mesh as shown at all corners.
3. Once embedment is complete, apply WRB over remainder of the substrate as illustrated.
4. Apply AquaFlash® and AquaFlash mesh as per DSC196 - Sills only if WRB is applied around the balance of the rough opening.

AquaFlash is applied using a brush or deep-nap roller. Embed AquaFlash Mesh into wet AquaFlash and allow to set.

Apply second coat fully covering the AquaFlash Mesh.

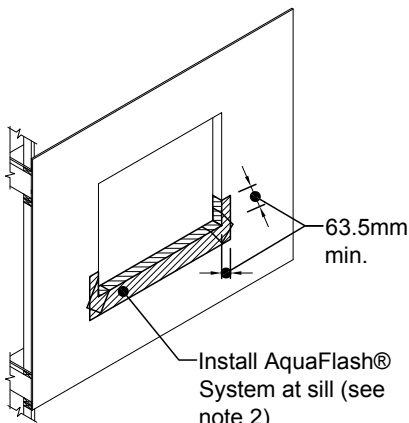
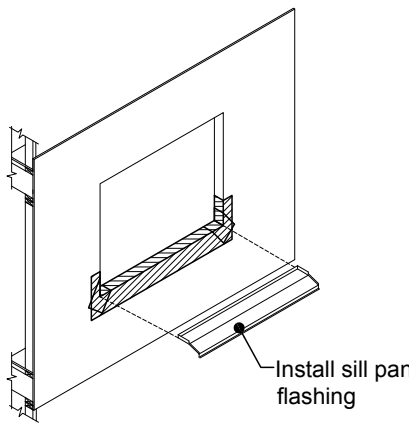
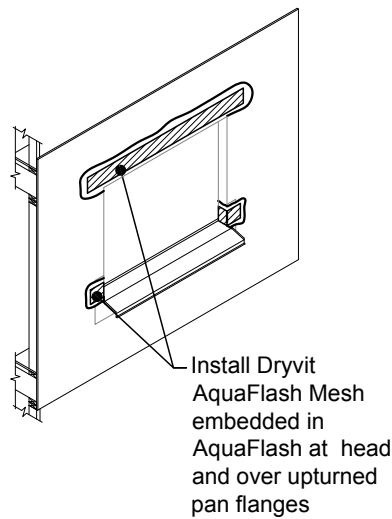
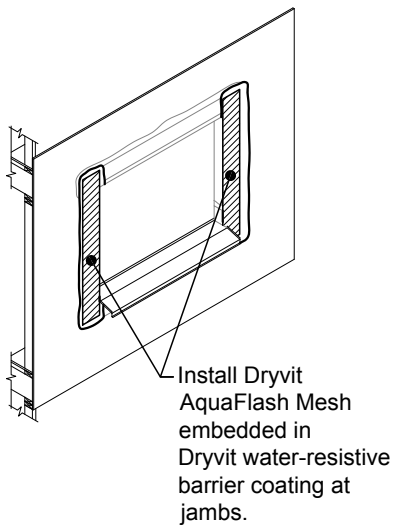
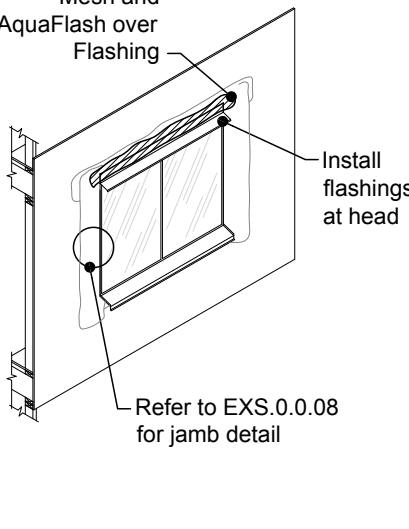
Alternatively, Dryvit's Flashing tape or EIFS tape may be used and is applied around the entire rough opening, but not returning to the header. See illustration below.



* Water-resistant barrier to be applied over EIFS tape with a positive lap of 2" minimum.

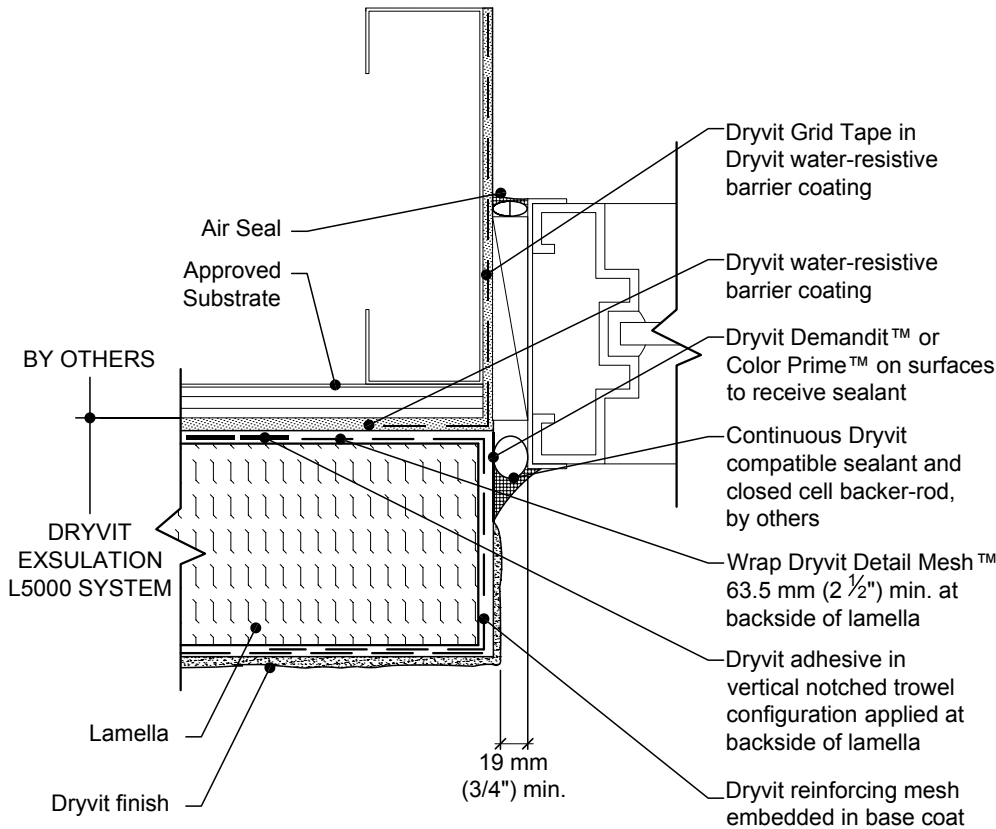
R-002-07-08

Protection of Rough Openings

<p>Step #1</p>  <p>63.5mm min.</p> <p>Install AquaFlash® System at sill (see note 2)</p>	<p>Step #2</p>  <p>Install sill pan flashing</p>	<p>Step #3</p>  <p>Install Dryvit AquaFlash Mesh embedded in AquaFlash at head and over upturned pan flanges</p>
<p>Step #4</p>  <p>Install Dryvit AquaFlash Mesh embedded in Dryvit water-resistive barrier coating at jambs.</p>	<p>Step #5</p> <p>Apply AquaFlash Mesh and AquaFlash over Flashing</p>  <p>Install flashings at head</p> <p>Refer to EXS.0.0.08 for jamb detail</p>	<p>Notes:</p> <ol style="list-style-type: none"> 1. The AquaFlash System is a combination of AquaFlash Liquid used in conjunction with AquaFlash Mesh to seal substrates around windows, doors and other openings. 2. Install AquaFlash System (including diagonal "butterflies") onto sill and allow to dry. 3. Alternatively, Dryvit Flashing Tape or EIFS tape may be used.
<p>R-002-07-08</p>		<p>Rough Opening and Sill Preparation - AquaFlash System</p>

Notes:

1. Dryvit recommends that ground floor applications and all facades exposed to abnormal stress, high traffic, or deliberate impact have the base coat reinforced with Panzer®15 or 20 mesh prior to Standard Plus mesh. Location of high impact zones should be indicated on contract drawings.

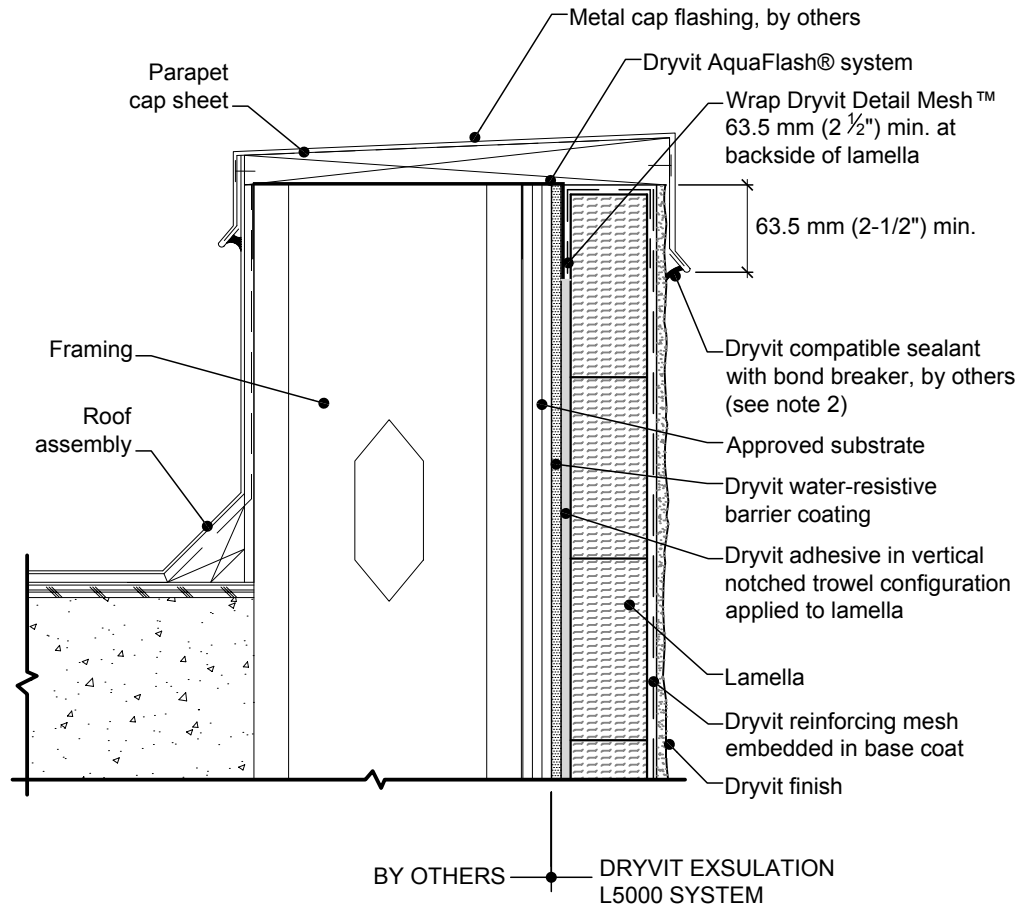


R-002-07-08

Jamb

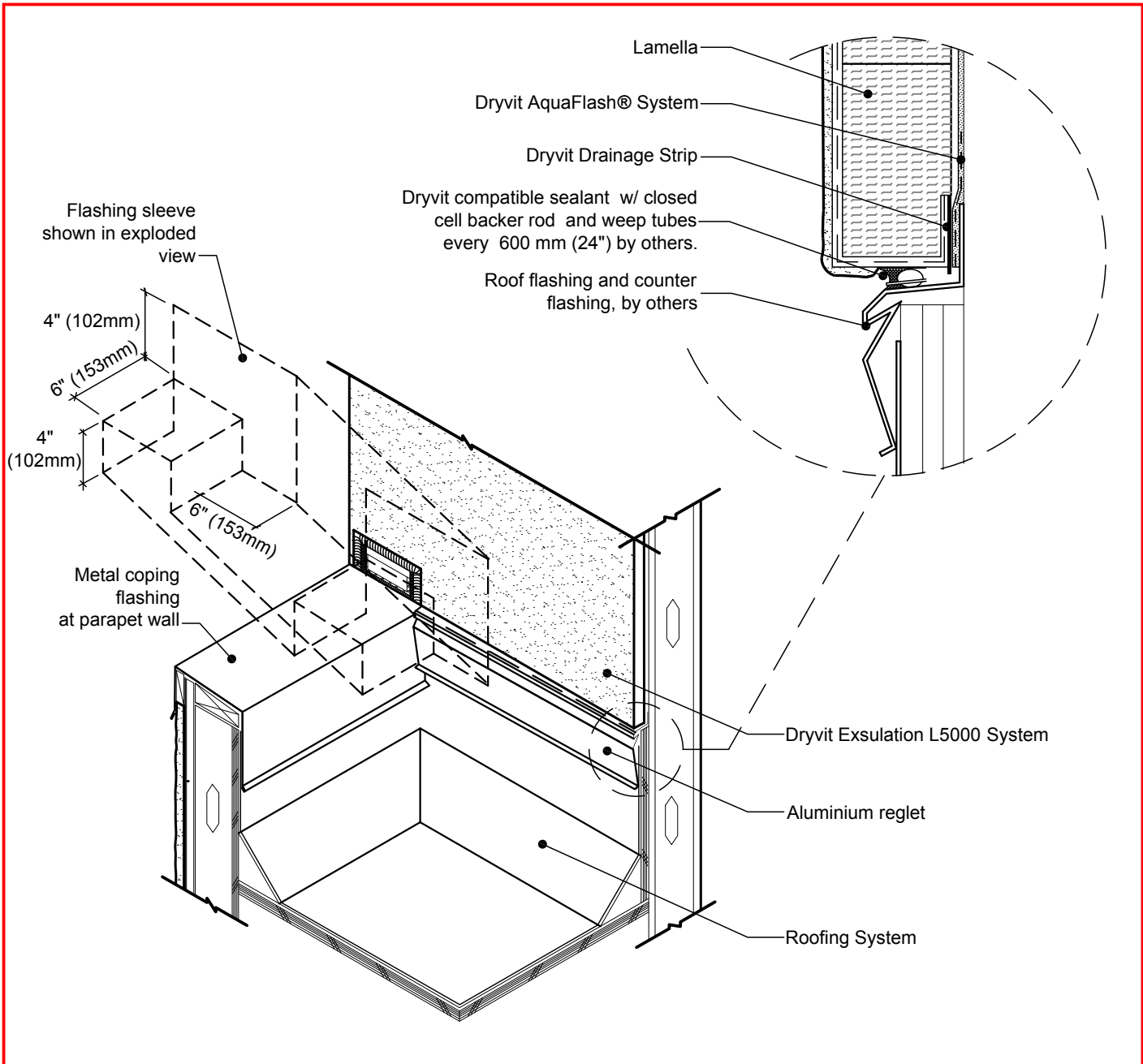
Notes:

1. Dryvit recommends that ground floor applications and all facades exposed to abnormal stress, high traffic, or deliberate impact have the base coat reinforced with Panzer® 15 or 20 mesh prior to Standard Plus mesh. Location of high impact zones should be indicated on contract drawings.
2. Ensure parapet capping is water tight if sealant is to be applied here. Otherwise extend capping overlap as required to avoid moisture migration behind system.



R-002-07-08

Parapet - Cap Flashing

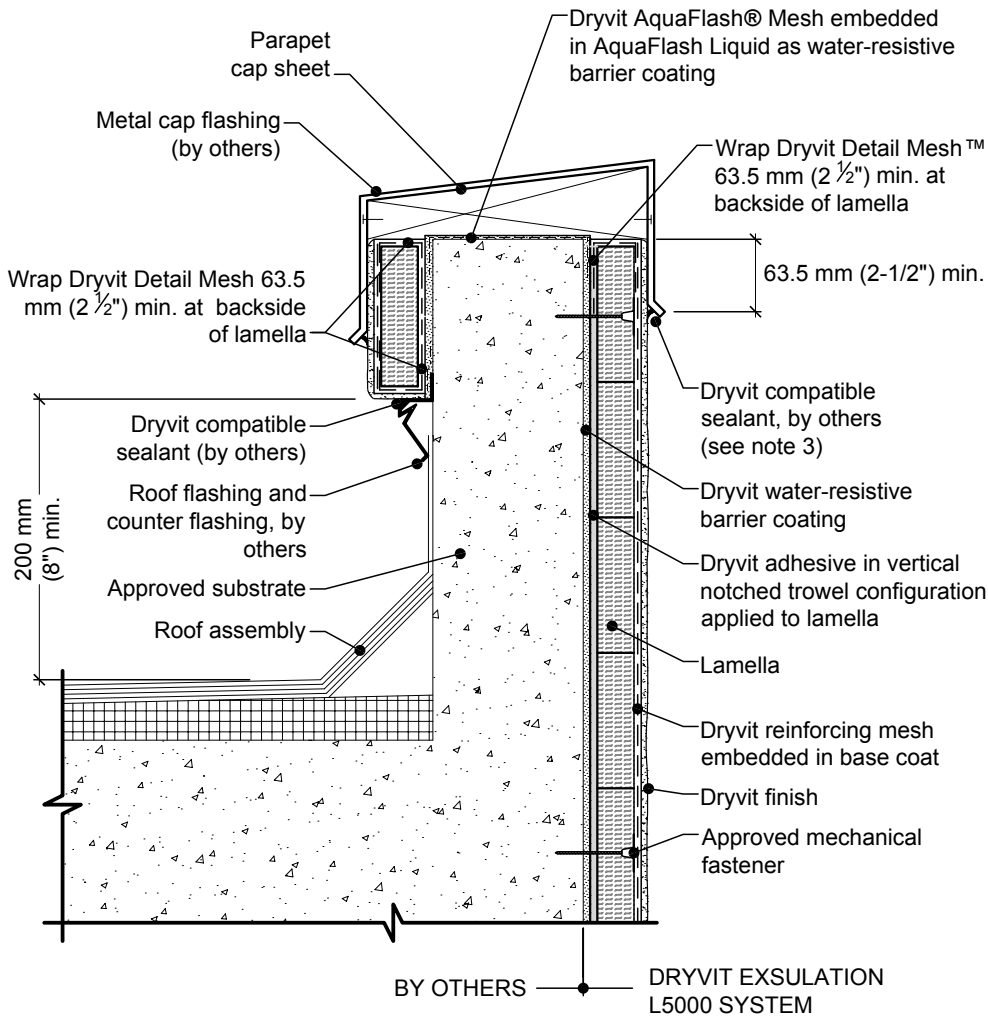


Notes:

1. Dryvit recommends that ground floor applications and all façades exposed to abnormal stress, high traffic, or deliberate impact have the base coat reinforced with Panzer® 15 or 20 mesh prior to Standard Plus mesh. Location of high impact zones should be indicated on contract drawings.
2. Lap all flashing and water-resistant barriers in shingle fashion.
3. Use Dryvit AquaFlash System at wall/sleeve transition.

R-002-07-08

Parapet/Wall Termination



Notes:

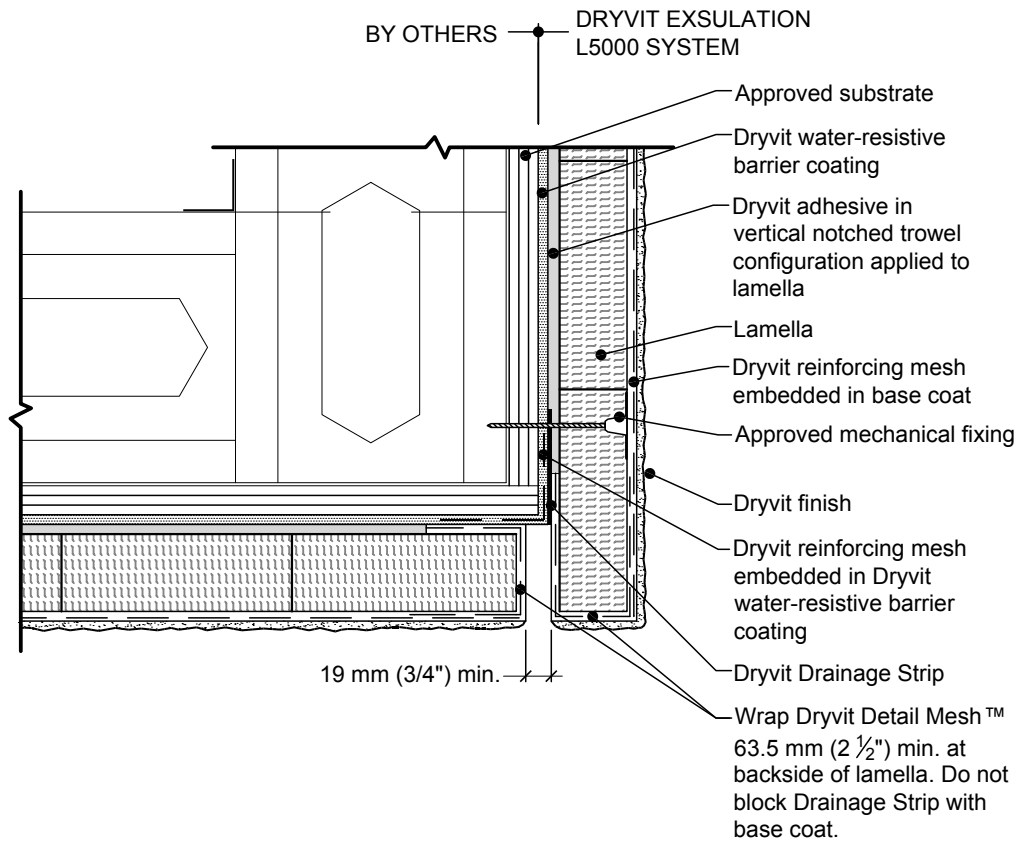
1. Dryvit recommends that ground floor applications and all facades exposed to abnormal stress, high traffic, or deliberate impact have the base coat reinforced with Panzer® 15 or 20 mesh prior to Standard Plus mesh. Location of high impact zones should be indicated on contract drawings.
2. If system on back of parapet exceeds 610mm (2'-0") in height, provisions for drainage are required along wall base.
3. Ensure parapet capping is water tight if sealant is to be applied here. Otherwise extend capping overlap as required to avoid moisture migration behind system.
4. Install mechanical fixings as per EXL.0.0.02.

R-002-07-08

Parapet - Solid Substrate

Notes:

1. Dryvit recommends that ground floor applications and all facades exposed to abnormal stress, high traffic, or deliberate impact have the base coat reinforced with Panzer® 15 or 20 mesh prior to Standard Plus mesh. Location of high impact zones should be indicated on contract drawings.
2. Bottom edge of Dryvit Drainage Strip shall be masked during installation to prevent clogging of drainage channels.

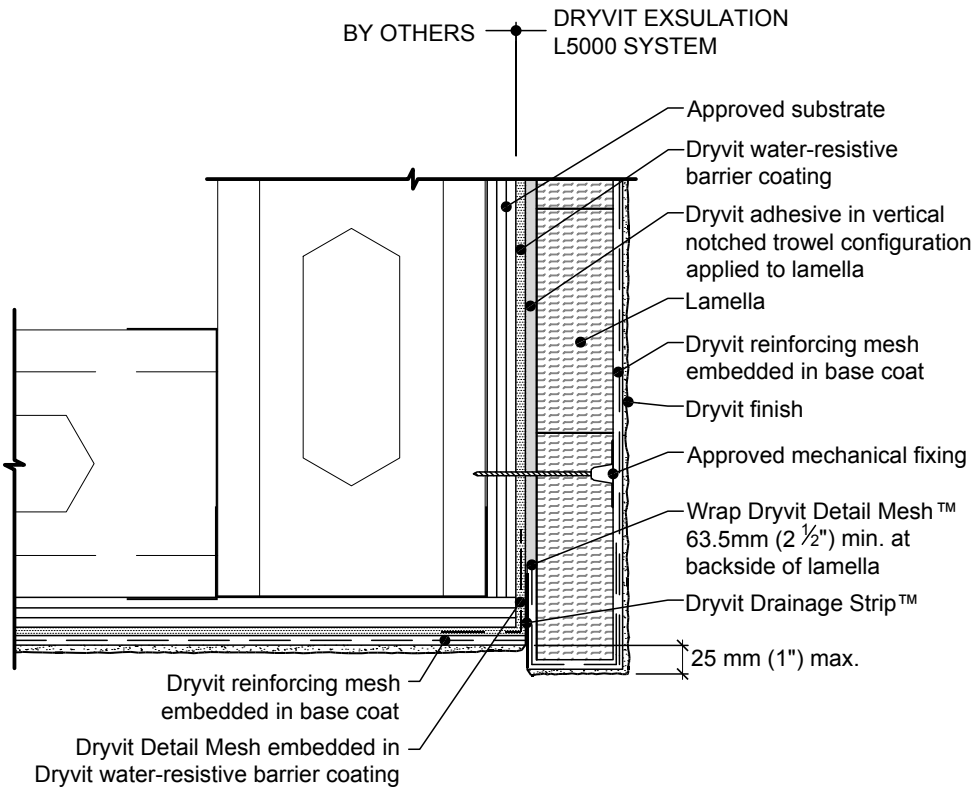


R-002-07-08

Soffit/Fascia Intersection

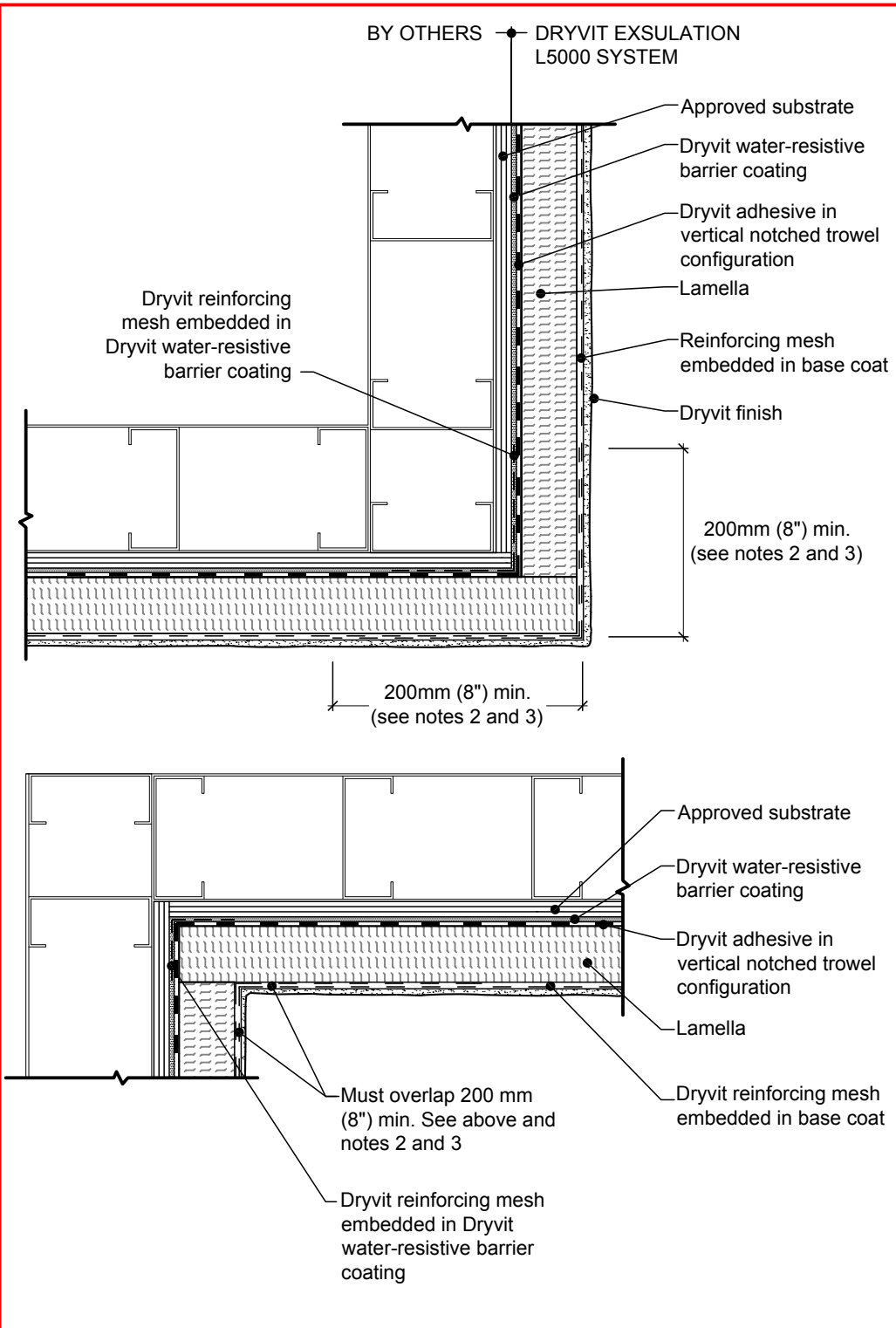
Notes:

1. Dryvit recommends that ground floor applications and all facades exposed to abnormal stress, high traffic, or deliberate impact have the base coat reinforced with Panzer® 15 or 20 mesh prior to Standard Plus mesh. Location of high impact zones should be indicated on contract drawings.
2. Soffits without insulation require expansion joints every 6 m (20 ft).
3. Refer to Dryvit publication DSC173 for specific requirements for soffit areas.
4. Bottom edge of Dryvit Drainage Strip shall be masked during installation to prevent clogging of drainage channels.



R-002-07-08

Soffit - Uninsulated



Notes:

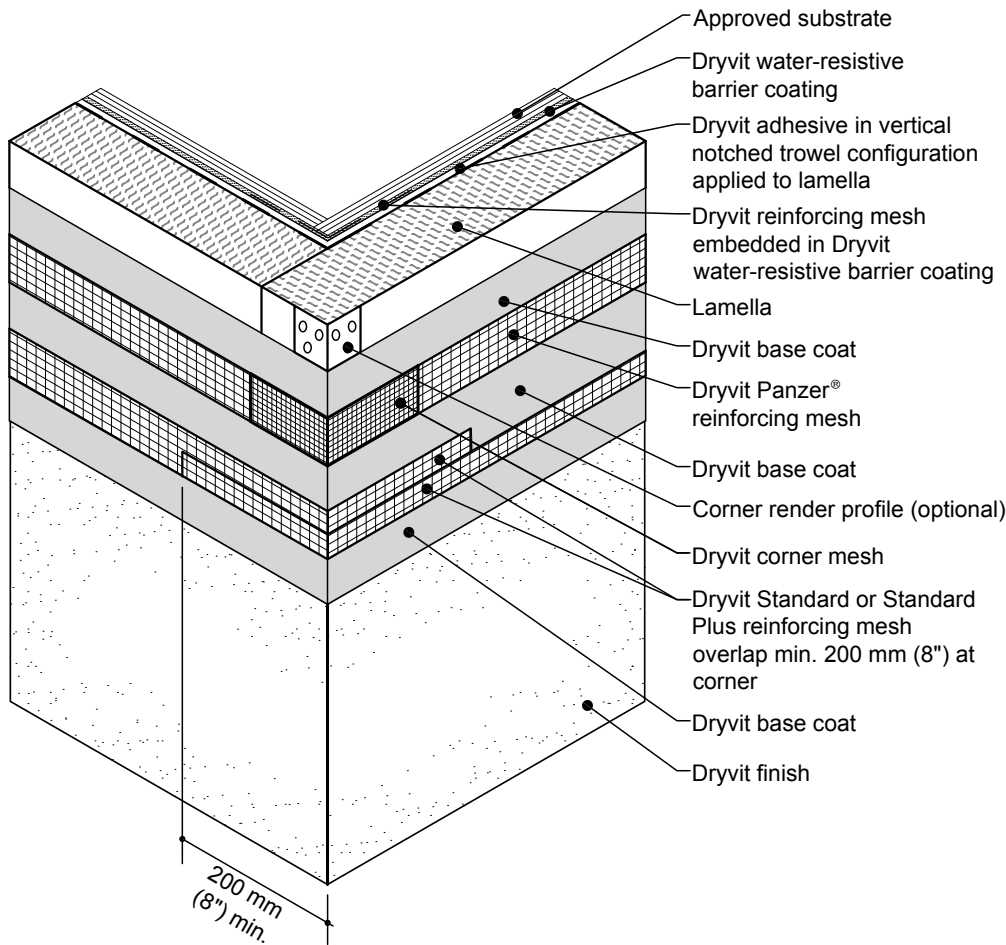
1. Dryvit recommends that ground floor applications and all facades exposed to abnormal stress, high traffic, or deliberate impact have the base coat reinforced with Panzer® 15 or 20 mesh prior to Standard Plus mesh. Location of high impact zones should be indicated on contract drawings.
2. Double wrap outside corners with reinforcing mesh or use Corner Mesh™.
3. Do not lap reinforcing mesh within 200mm (8") of a corner.

R-002-07-08

Inside/Outside Corners

Notes:

1. Dryvit recommends that ground floor applications and all facades exposed to abnormal stress, high traffic, or deliberate impact have the base coat reinforced with Panzer® 15 or 20 mesh prior to Standard Plus mesh. Location of high impact zones should be indicated on contract drawings.

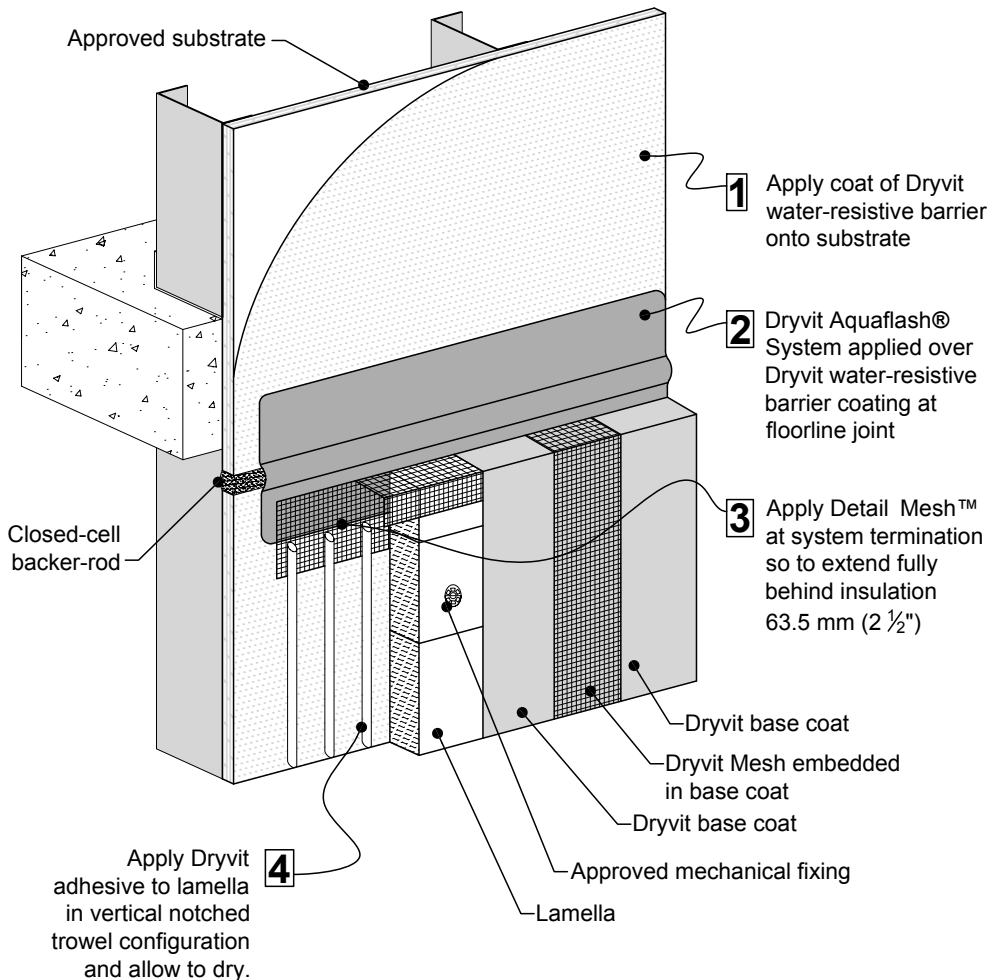


R-002-07-08

Outside Corner - High Impact

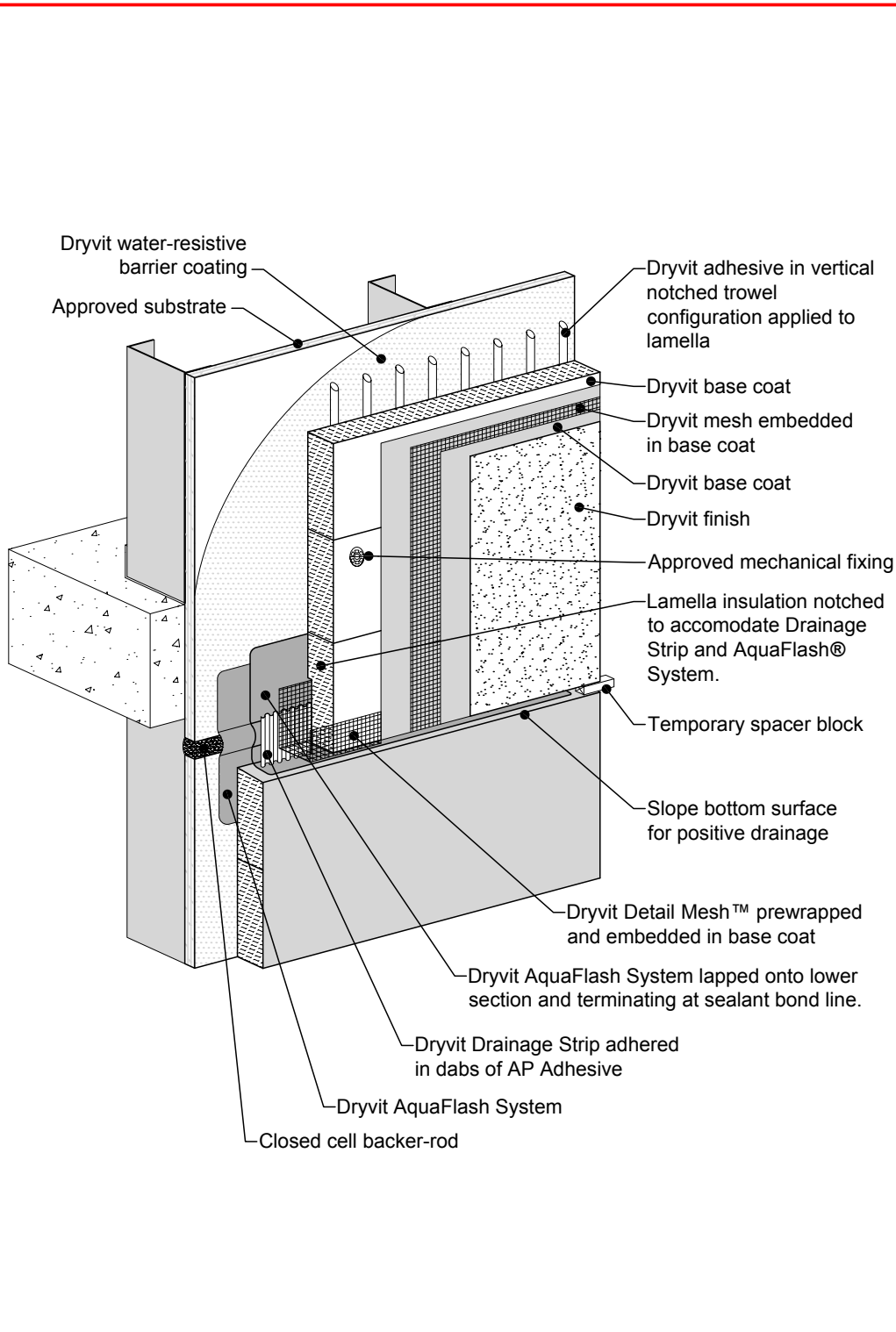
Notes:

1. Dryvit recommends that ground floor applications and all facades exposed to abnormal stress, high traffic, or deliberate impact have the base coat reinforced with Panzer® 15 or 20 mesh prior to Standard Plus mesh. Location of high impact zones should be indicated on contract drawings.



R-002-07-08

Floorline Detail - Application Sequence

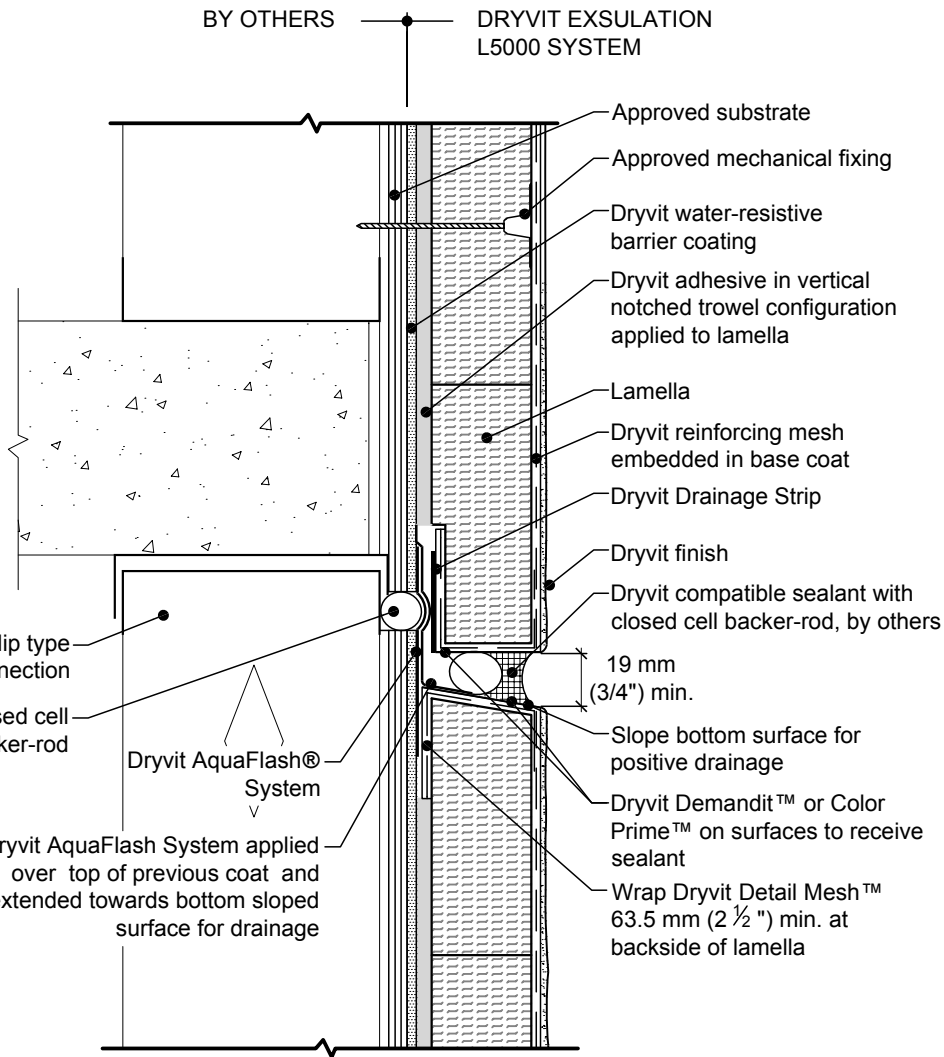


Notes:

1. Dryvit recommends that ground floor applications and all facades exposed to abnormal stress, high traffic, or deliberate impact have the base coat reinforced with Panzer® 15 or 20 mesh prior to Standard Plus mesh. Location of high impact zones should be indicated on contract drawings.
2. Install fastener on first row extending above slab. Use support/spacer block on first row until adhesive sets.

R-002-07-08

Horizontal Slip Joint - Extended 2d View



Notes:

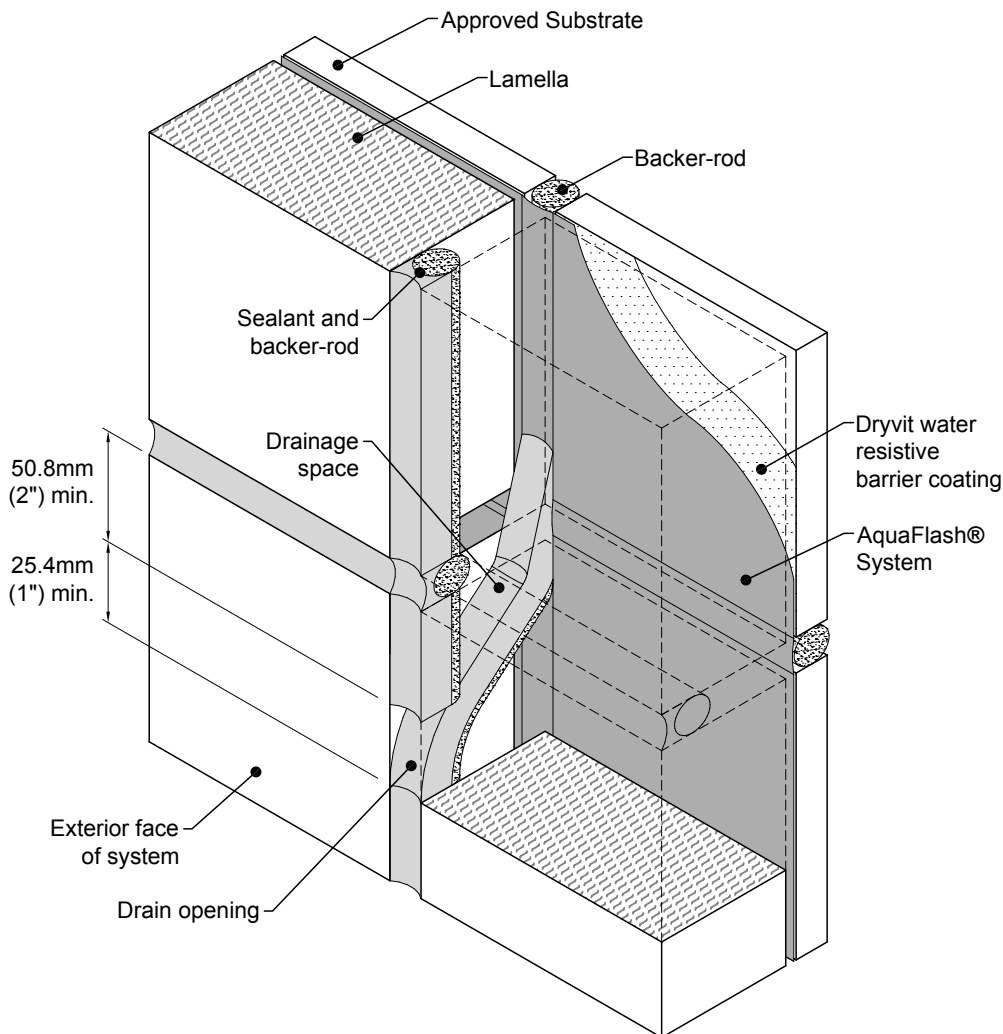
1. Dryvit recommends that ground floor applications and all facades exposed to abnormal stress, high traffic, or deliberate impact have the base coat reinforced with Panzer® 15 or 20 mesh prior to Standard Plus mesh. Location of high impact zones should be indicated on contract drawings.
2. Expansion joint in the Exsulation L5000 System is necessary where significant differential movement is expected at floor lines.
3. Locate external sealant joint within 50 mm (2") of break in sheathing.
4. Apply Dryvit AquaFlash System over prepared joint at change in substrate

R-002-07-08

Horizontal Slip Joint

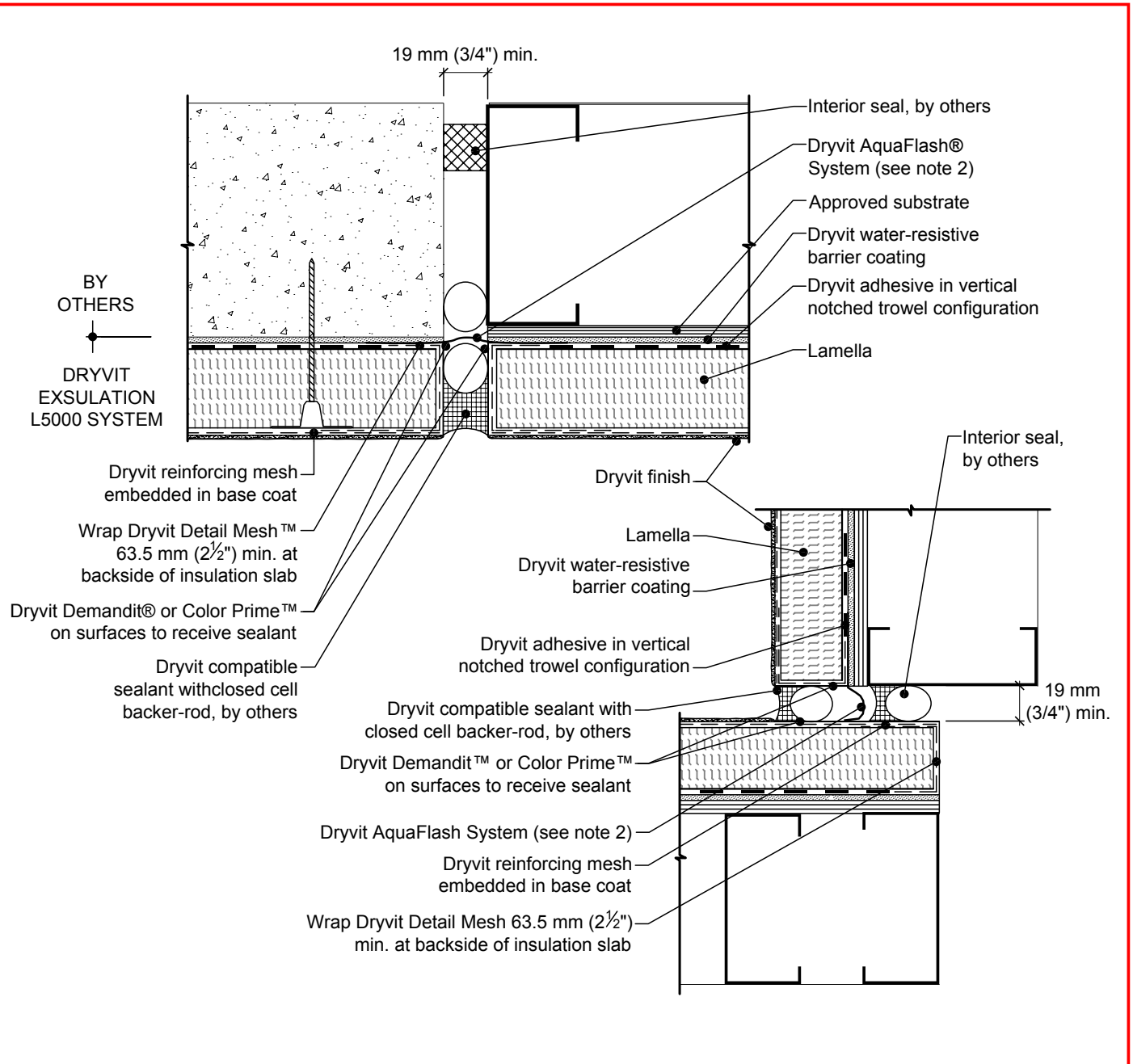
Notes:

1. Dryvit recommends that ground floor applications and all facades exposed to abnormal stress, high traffic, or deliberate impact have the base coat reinforced with Panzer® 15 or 20 mesh prior to Standard Plus mesh. Location of high impact zones should be indicated on contract drawings.



R-002-07-08

Two-Stage Joint - Extended 2d



Notes:

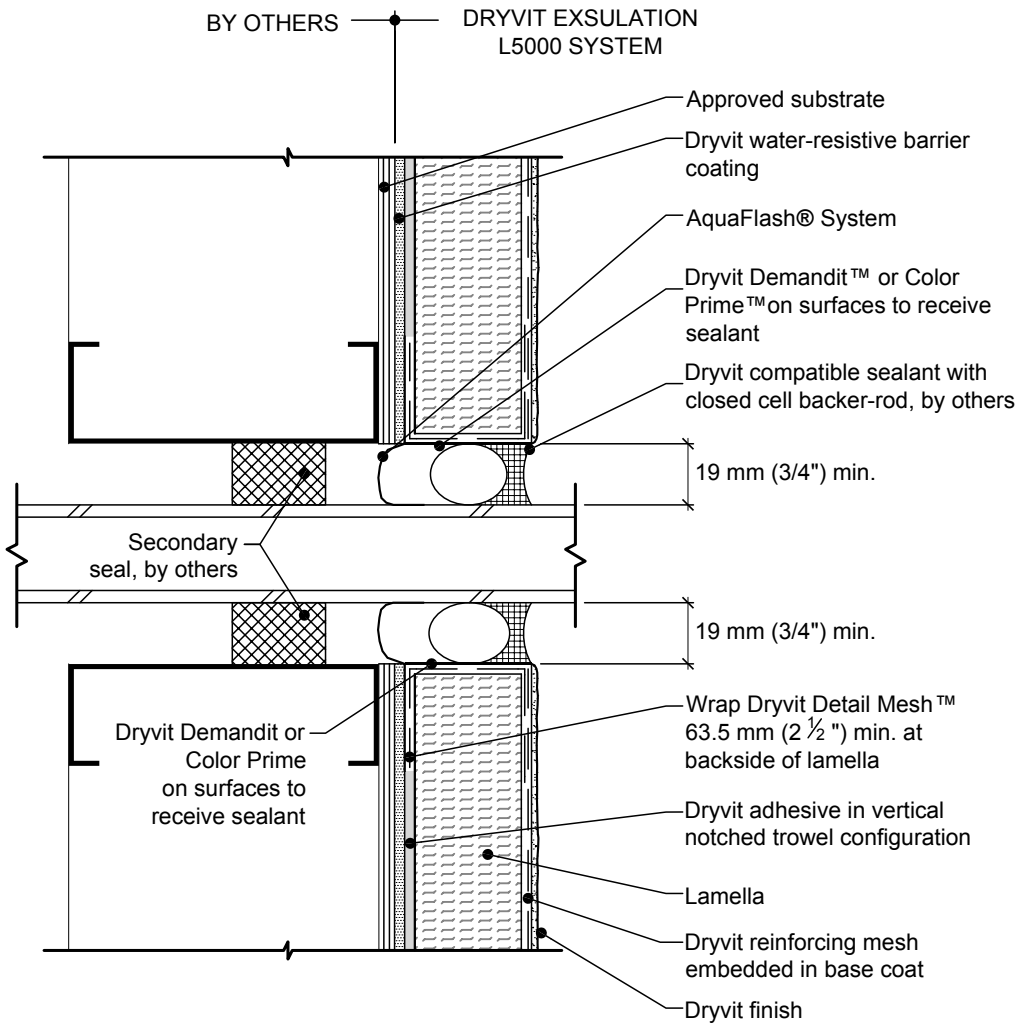
1. Dryvit recommends that ground floor applications and all façades exposed to abnormal stress, high traffic, or deliberate impact have the base coat reinforced with Panzer® 15 or 20 mesh prior to Standard Plus mesh. Location of high impact zones should be indicated on contract drawings.
2. Sealant should not be in direct contact with the AquaFlash System.
3. Apply water-resistive barrier over remainder of wall surface.

R-002-07-08

Structural Expansion Joints

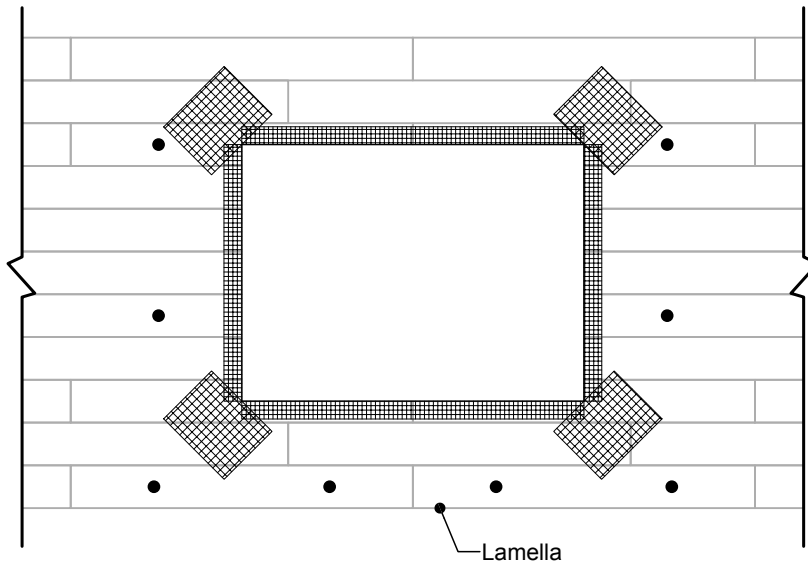
Notes:

1. Dryvit recommends that ground floor applications and all facades exposed to abnormal stress, high traffic, or deliberate impact have the base coat reinforced with Panzer® 15 or 20 mesh prior to Standard Plus mesh. Location of high impact zones should be indicated on contract drawings.



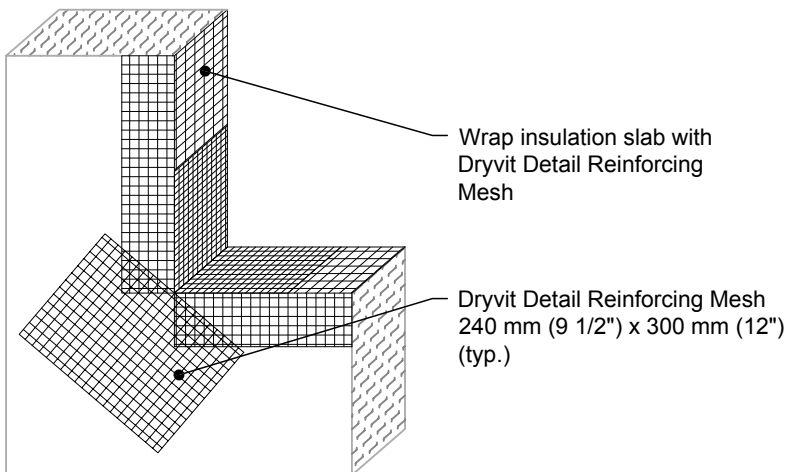
R-002-07-08

Penetrations



Notes:

1. Dryvit recommends that ground floor applications and all facades exposed to abnormal stress, high traffic, or deliberate impact have the base coat reinforced with Panzer® 15 or 20 mesh prior to Standard Plus mesh. Location of high impact zones should be indicated on contract drawings.
2. Locate lamella slabs such that slab edges do not align with corners of penetration.
3. Apply a piece of 240 mm (9 1/2") x 300 mm (12") detail reinforcing mesh diagonally at each corner.

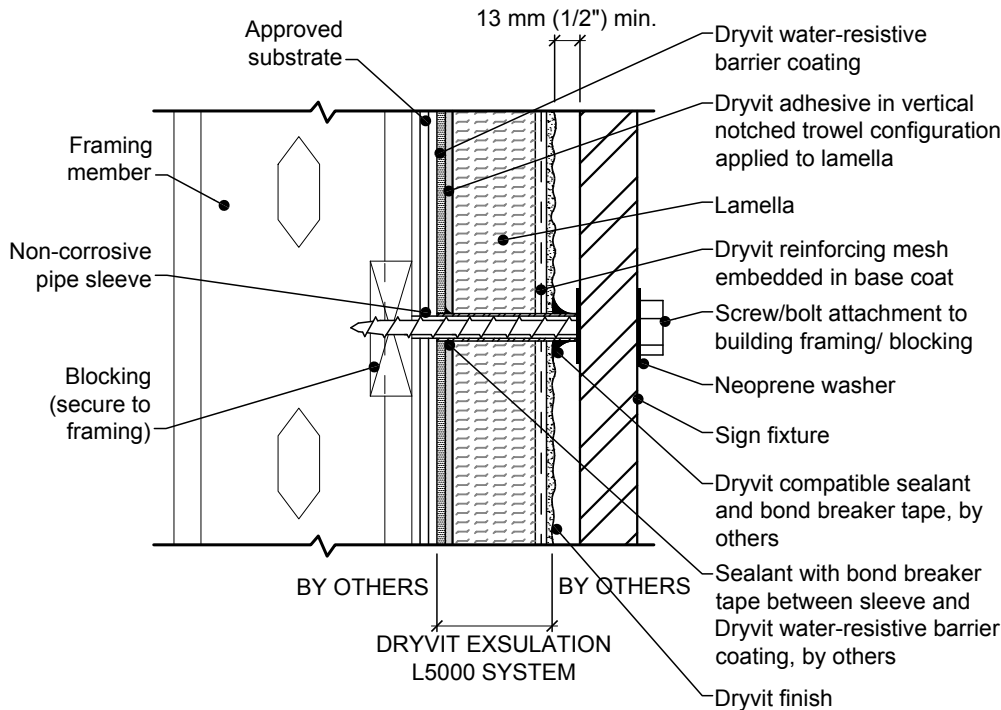


R-002-07-08

Wall Penetrations

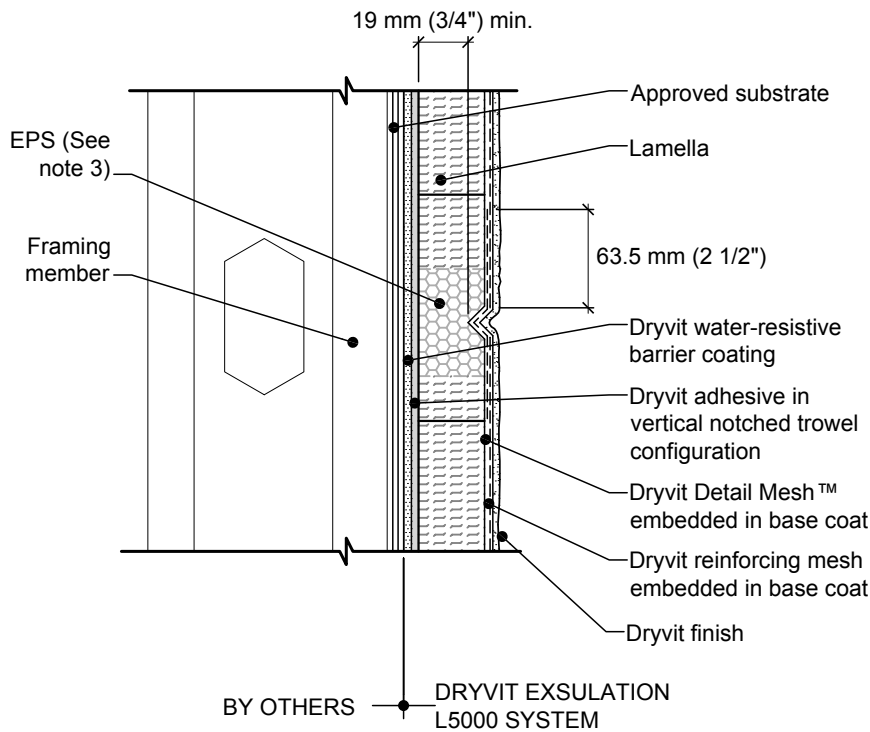
Installation Instructions:

1. Pre-drill through EIFS stopping at water-resistive barrier (WRB).
2. Cut sleeve to equal depth of system from WRB to outside face.
3. Gun neutral cure silicone sealant into hole and insert sleeve.
4. While sealant is wet, install fastener and tool sealant around edges as shown.



R-002-07-08

Sign Attachment

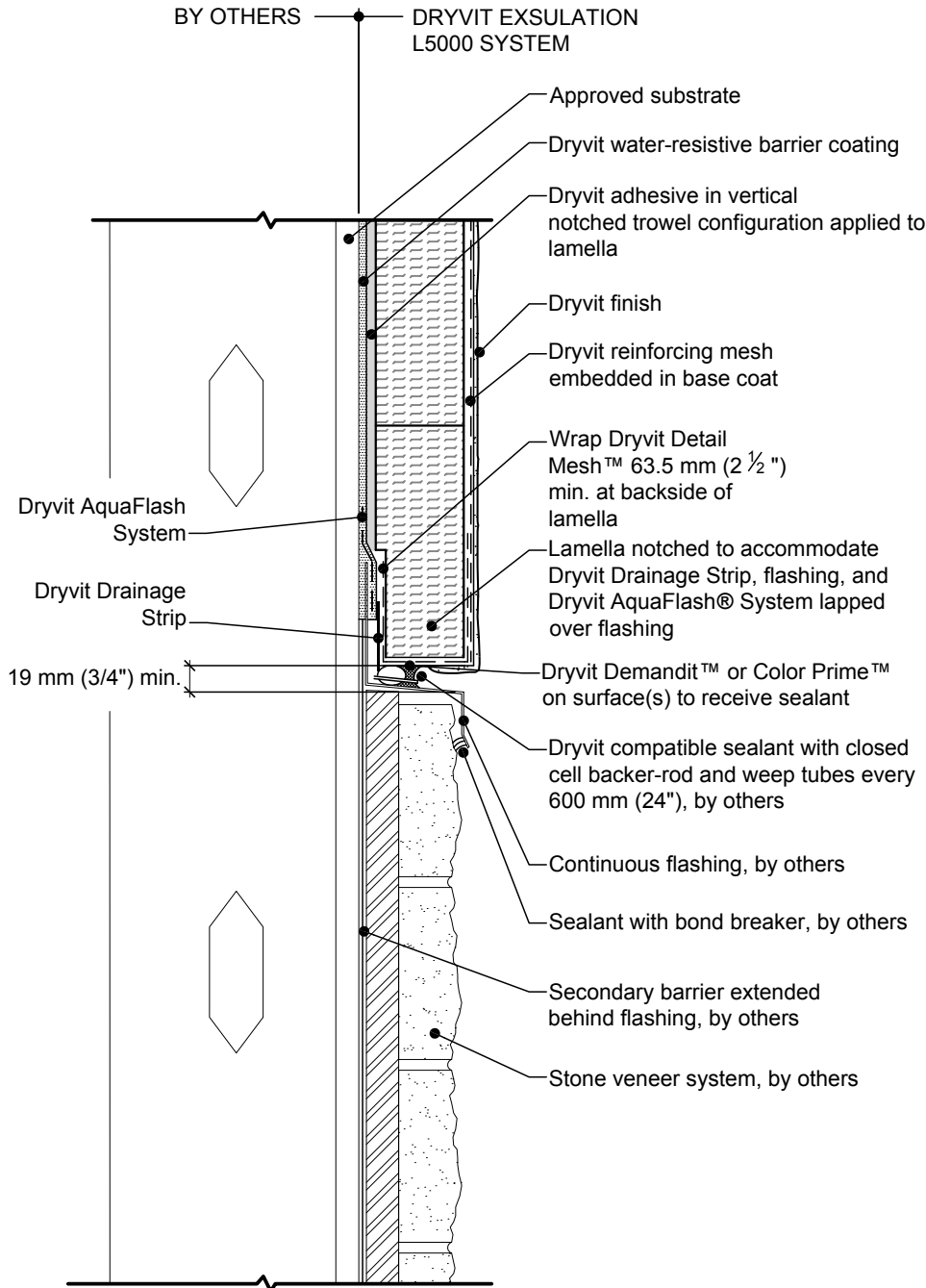


Notes:

1. Dryvit recommends that ground floor applications and all facades exposed to abnormal stress, high traffic, or deliberate impact have the base coat reinforced with Panzer® 15 or 20 mesh prior to Standard Plus mesh. Location of high impact zones should be indicated on contract drawings.
2. Slope bottom edge of reveal for positive drainage.
3. EPS can be used at reveal location. This must be pre-approved by design authority.

R-002-07-08

Aesthetic Reveals



Notes:

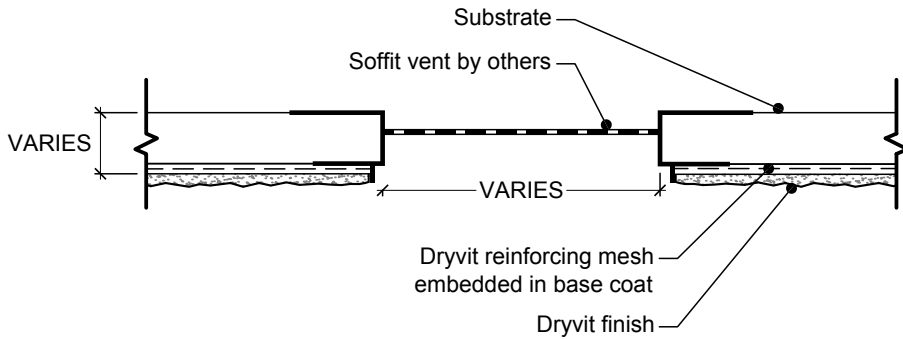
1. Dryvit recommends that ground floor applications and all facades exposed to abnormal stress, high traffic, or deliberate impact have the base coat reinforced with Panzer® 15 or 20 mesh prior to Standard Plus mesh. Location of high impact zones should be indicated on contract drawings.

R-002-07-08

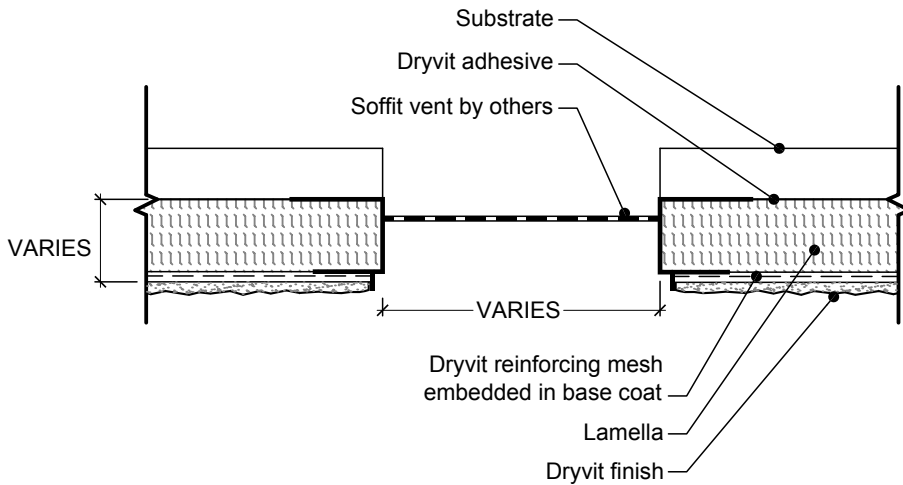
Horizontal Joint at Stone Veneer

Notes:

1. Dryvit recommends that ground floor applications and all facades exposed to abnormal stress, high traffic, or deliberate impact have the base coat reinforced with Panzer® 15 or 20 mesh prior to Standard Plus mesh. Location of high impact zones should be indicated on contract drawings.
2. Caulk all butt joints, intersections, and end of vents.



Uninsulated



Insulated

R-002-07-08

Soffit vent