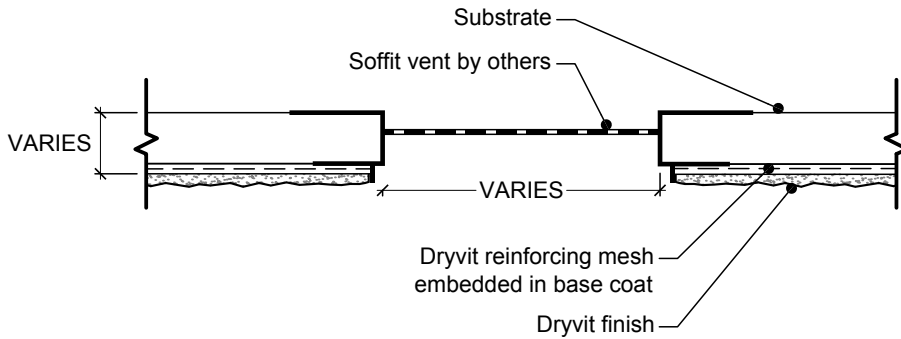
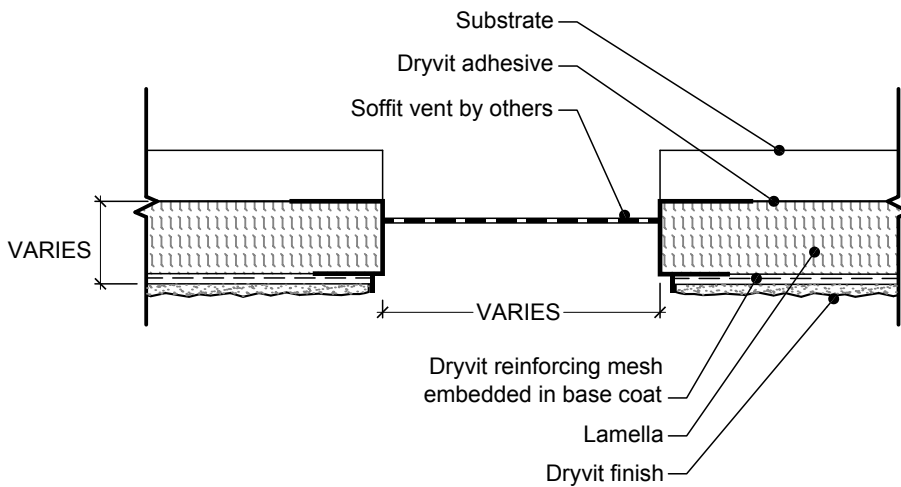


Notes:

1. Dryvit recommends that ground floor applications and all facades exposed to abnormal stress, high traffic, or deliberate impact have the base coat reinforced with Panzer® 15 or 20 mesh prior to Standard Plus mesh. Location of high impact zones should be indicated on contract drawings.
2. Caulk all butt joints, intersections, and end of vents.



Uninsulated



Insulated

R-002-07-08

Soffit vent