

ICF Finish System



100% Textured Acrylic Finishing Systems (TAFS)
For Use Over Insulating Concrete Forms (ICF)

DUK193

ICF Finish System Installation Details

TABLE OF CONTENTS

DETAIL

| | |
|--|--------------|
| ICFFS Finish System Cutaway | ICFFS 0.0.01 |
| Base Detail- Height Adjuster | ICFFS 0.0.02 |
| Base Detail- Cut Form | ICFFS 0.0.03 |
| Base Detail- Tapered Cut Form | ICFFS 0.0.04 |
| Base Detail- EPS Trim | ICFFS 0.0.05 |
| Base Detail- Without Inspection Strip | ICFFS 0.0.06 |
| Head/Sill- Bucksaver Rough Buck with EPS Trim | ICFFS 0.0.07 |
| Head/Sill- Wood Rough Buck with EPS Trim | ICFFS 0.0.08 |
| Head/Sill- Bucksaver Rough Buck | ICFFS 0.0.09 |
| Head/Sill- Wood Rough Buck | ICFFS 0.0.10 |
| Head/Sill- Flange Mount | ICFFS 0.0.11 |
| Head/Sill- Recessed | ICFFS 0.0.12 |
| A/C Penetration | ICFFS 0.0.13 |
| Eave Detail- Recessed Top Plate | ICFFS 0.0.14 |
| Eave Detail- Exposed Top Plate | ICFFS 0.0.15 |
| Eave Detail- Steel Roof Rafters | ICFFS 0.0.16 |
| Sloped Roof/Wall Intersection Attachment to Existing Wall | ICFFS 0.0.17 |
| Attachment to Steel Column | ICFFS 0.0.18 |
| Parapet Termination | ICFFS 0.0.19 |
| | ICFFS 0.0.20 |

NOTE

DRYVIT MAKES NO REPRESENTATION REGARDING CONFORMITY OF ITS SUGGESTIONS TO MODEL BUILDING CODES, ENGINEERING CRITERIA, SPECIFIC APPLICATIONS OR PROJECT LOCATIONS. ALL COMPONENTS INDICATED IN ILLUSTRATIONS, AS WELL AS OTHERS THAT MAY BE REQUIRED FOR THE INTEGRITY OF THE SYSTEM SHALL BE DESIGNED, DETAILED AND ENGINEERED BY REPRESENTATIVES OF THE ARCHITECT, OWNER OR CONTRACTOR TO BE IN CONFORMANCE WITH MODEL CODES, ARCHITECTURAL AND ENGINEERING REQUIREMENTS PERTAINING TO SPECIFIC BUILDING PROJECTS.

DRYVIT MAKES NO WARRANTY, EXPRESSED OR IMPLIED, AS TO THE ARCHITECTURAL DESIGN, ENGINEERING, OR WORKMANSHIP OF PROJECTS UTILIZING DRYVIT SYSTEMS OR PRODUCTS.

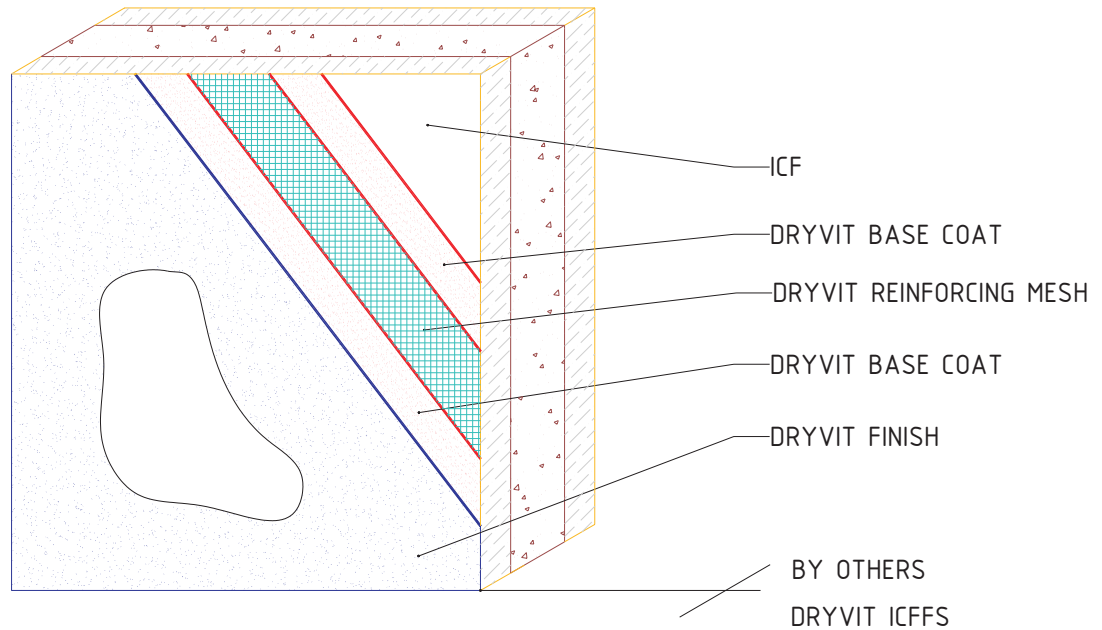
THE LIABILITIES OF DRYVIT SHALL BE AS STATED IN THE DRYVIT STANDARD WARRANTY. CONTACT DRYVIT FOR A FULL AND COMPLETE COPY OF THIS WARRANTY.

ICF Finish System

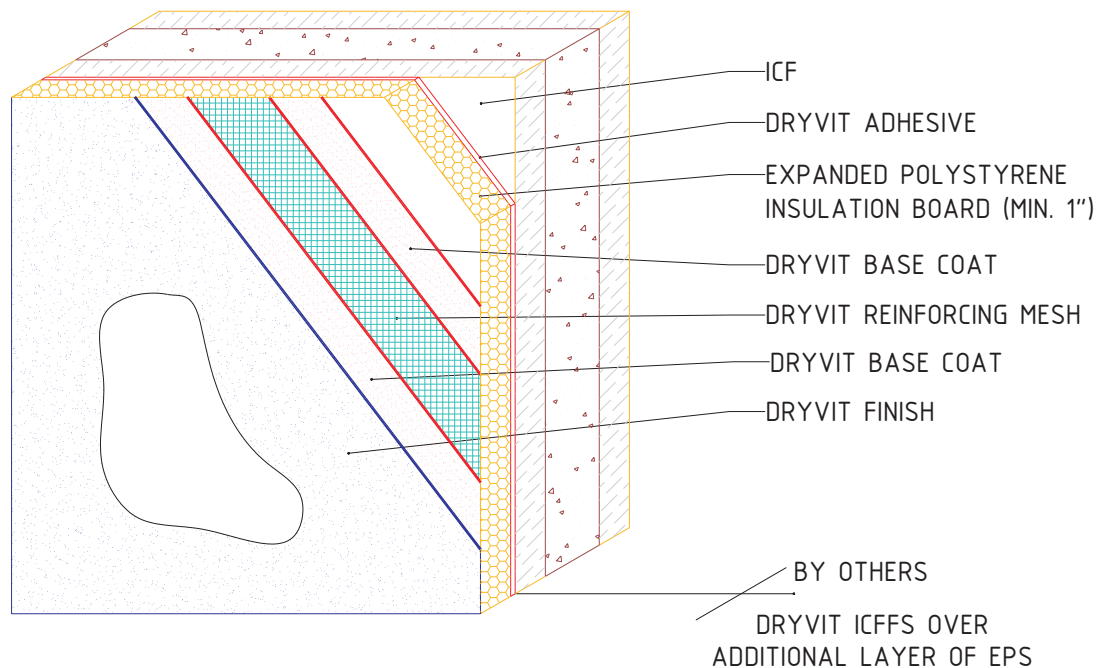
The architecture, engineering and design of the project using the Dryvit products is the responsibility of the project's design professional. All systems must comply with local building codes and standards. This detail is for general information and guidance only and Dryvit specifically disclaims any liability for the use of this detail and for the architecture, design, engineering or workmanship of any project. The project design professional determines, in its sole discretion, whether this detail or a functionally equivalent alternative is best suited for the project. Use of a functionally equivalent detail does not violate Dryvit's warranty. This detail is subject to change without notice. Contact Dryvit to insure you have the most recent version.



Dryvit TAFS Over ICF



Dryvit TAFS Over Additional Layer of EPS Over ICF



ICF Finish System

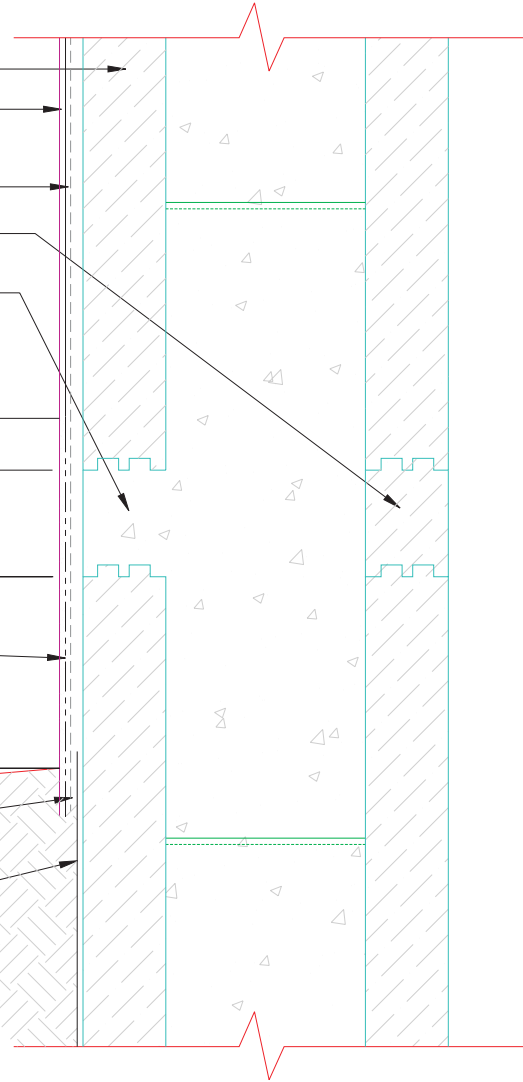
Dryvit ICF Finish System Cutaway

NOTE:

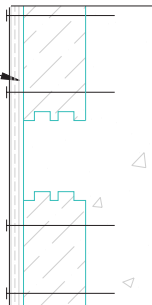
1. DRYVIT RECOMMENDS THAT GROUND FLOOR APPLICATIONS AND ALL FACADES EXPOSED TO ABNORMAL STRESS, HIGH TRAFFIC, OR DELIBERATE IMPACT HAVE THE BASE COAT REINFORCED WITH PANZER® MESH PRIOR TO STANDARD™ OR STANDARD PLUS™ MESH. LOCATION OF HIGH IMPACT ZONES SHOULD BE INDICATED ON CONTRACT DOCUMENTS

The architecture, engineering and design of the project using the Dryvit products is the responsibility of the project's design professional. All systems must comply with local building codes and standards. This detail is for general information and guidance only and Dryvit specifically disclaims any liability for the use of this detail and for the architecture, design, engineering or workmanship of any project. The project design professional determines, in its sole discretion, whether this detail or a functionally equivalent alternative is best suited for the project. Use of a functionally equivalent detail does not violate Dryvit's warranty. This detail is subject to change without notice. Contact Dryvit to insure you have the most recent version.

- BURIED WEB FORM UNIT
- DRYVIT FINISH
- DRYVIT REINFORCING MESH EMBEDDED IN DRYVIT BASE COAT
- HEIGHT ADJUSTER (3-3/8")
- SEE DETAIL BELOW
- FORM SPACE TO BE EQUAL TO HEIGHT ADJUSTER AT OPPOSITE SIDE OF FORM
- APPLY REINFORCED DRYVIT DRYFLEX® BASE COAT OVER INSPECTION STRIP EXTENDING MIN. 6" OVER ICF ABOVE AND BELOW, AND MIN. 12" FROM GRADE
- DRYVIT REINFORCING MESH EMBEDDED IN DRYVIT DRYFLEX BASE COAT
- ELEV. OF TERMITE INSPECTION STRIP ABOVE FIN. GRADE 6" TO 8" AS PER CODE
- DRYFLEX TO BE LAPPED OVER WATERPROOFING AT GRADE LEVEL MIN 6"
- WATERPROOFING MEMBRANE & DRAINAGE / PROTECTION BOARD AS SPEC'D



- TEMPORARY PLYWOOD FORM FASTENED TO WEBS PRIOR TO CONCRETE PLACEMENT TO CREATE INSPECTION STRIP



ICF Finish System

Base Detail - Height Adjuster

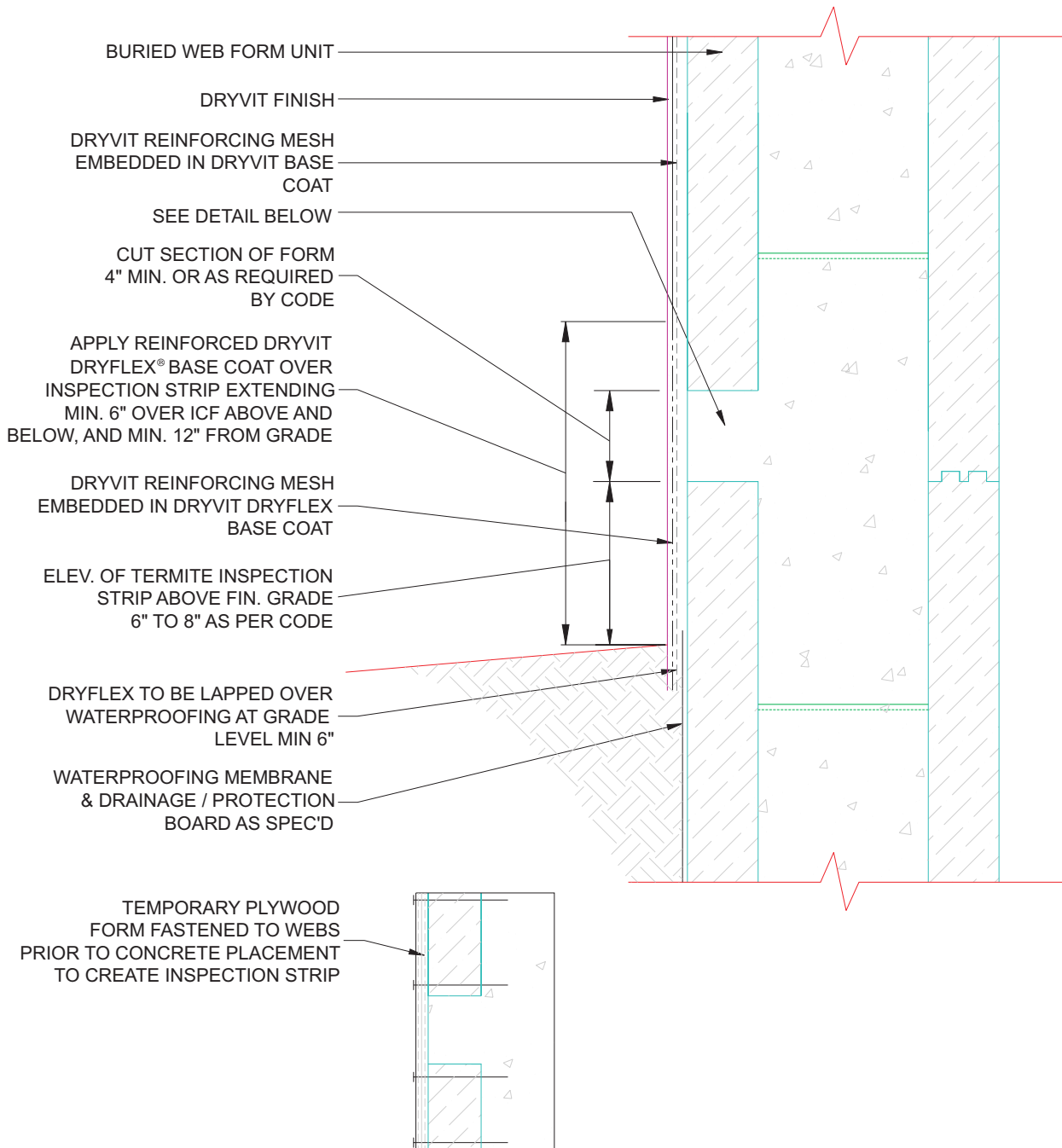
NOTE:

1. DETAIL RECOMMENDED WHEN AN INSPECTION STRIP IS REQUIRED BY LOCAL JURISDICTION OR BY PEST CONTROL OPERATORS
2. MINOR CRACKING IS POSSIBLE IN THE FINISHED EXTERIOR SURFACE AT ICF/CONCRETE TRANSITIONS
3. DRYVIT RECOMMENDS THAT GROUND FLOOR APPLICATIONS AND ALL FACADES EXPOSED TO ABNORMAL STRESS, HIGH TRAFFIC, OR DELIBERATE IMPACT HAVE THE BASE COAT REINFORCED WITH PANZER® MESH PRIOR TO STANDARD™ OR STANDARD PLUS™ MESH. LOCATION OF HIGH IMPACT ZONES SHOULD BE INDICATED ON CONTRACT DOCUMENTS

The architecture, engineering and design of the project using the Dryvit products is the responsibility of the project's design professional. All systems must comply with local building codes and standards. This detail is for general information and guidance only and Dryvit specifically disclaims any liability for the use of this detail and for the architecture, design, engineering or workmanship of any project. The project design professional determines, in its sole discretion, whether this detail or a functionally equivalent alternative is best suited for the project. Use of a functionally equivalent detail does not violate Dryvit's warranty. This detail is subject to change without notice. Contact Dryvit to insure you have the most recent version.



| APPROVED BY: | REV: | DATE: |
|--------------|------|-------|
| RS | 0 | 2/04 |



ICF Finish System

Base Detail - Cut Form

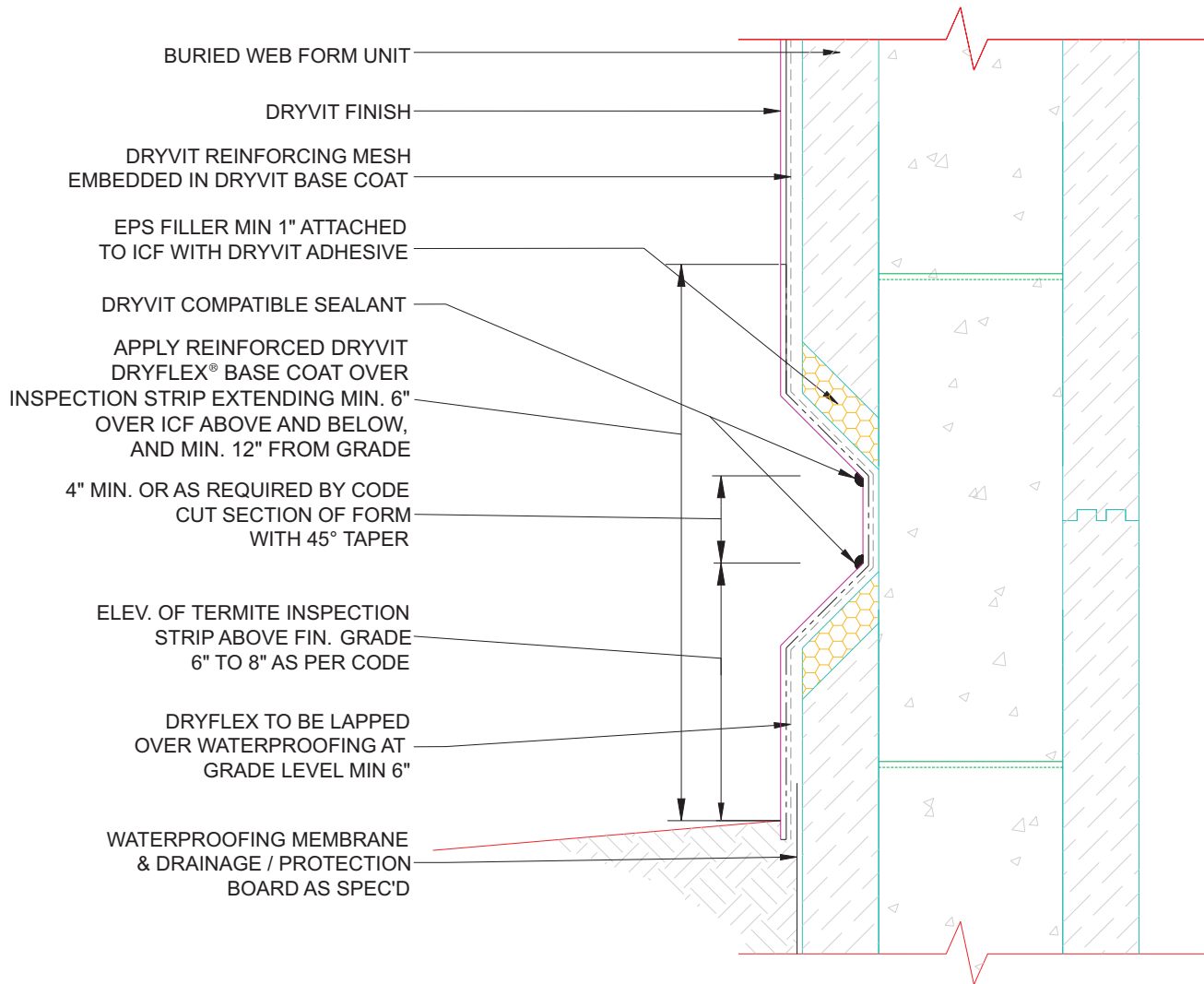
NOTE:

1. DETAIL RECOMMENDED WHEN AN INSPECTION STRIP IS REQUIRED BY LOCAL JURISDICTION OR BY PEST CONTROL OPERATORS
2. MINOR CRACKING IS POSSIBLE IN THE FINISHED EXTERIOR SURFACE AT ICF/CONCRETE TRANSITIONS
3. DRYVIT RECOMMENDS THAT GROUND FLOOR APPLICATIONS AND ALL FACADES EXPOSED TO ABNORMAL STRESS, HIGH TRAFFIC, OR DELIBERATE IMPACT HAVE THE BASE COAT REINFORCED WITH PANZER® MESH PRIOR TO STANDARD™ OR STANDARD PLUS™ MESH. LOCATION OF HIGH IMPACT ZONES SHOULD BE INDICATED ON CONTRACT DOCUMENTS

The architecture, engineering and design of the project using the Dryvit products is the responsibility of the project's design professional. All systems must comply with local building codes and standards. This detail is for general information and guidance only and Dryvit specifically disclaims any liability for the use of this detail and for the architecture, design, engineering or workmanship of any project. The project design professional determines, in its sole discretion, whether this detail or a functionally equivalent alternative is best suited for the project. Use of a functionally equivalent detail does not violate Dryvit's warranty. This detail is subject to change without notice. Contact Dryvit to insure you have the most recent version.



| APPROVED BY: | REV: | DATE: |
|--------------|------|-------|
| RS | 0 | 2/04 |



ICF Finish System

Base Detail - Tapered Cut Form

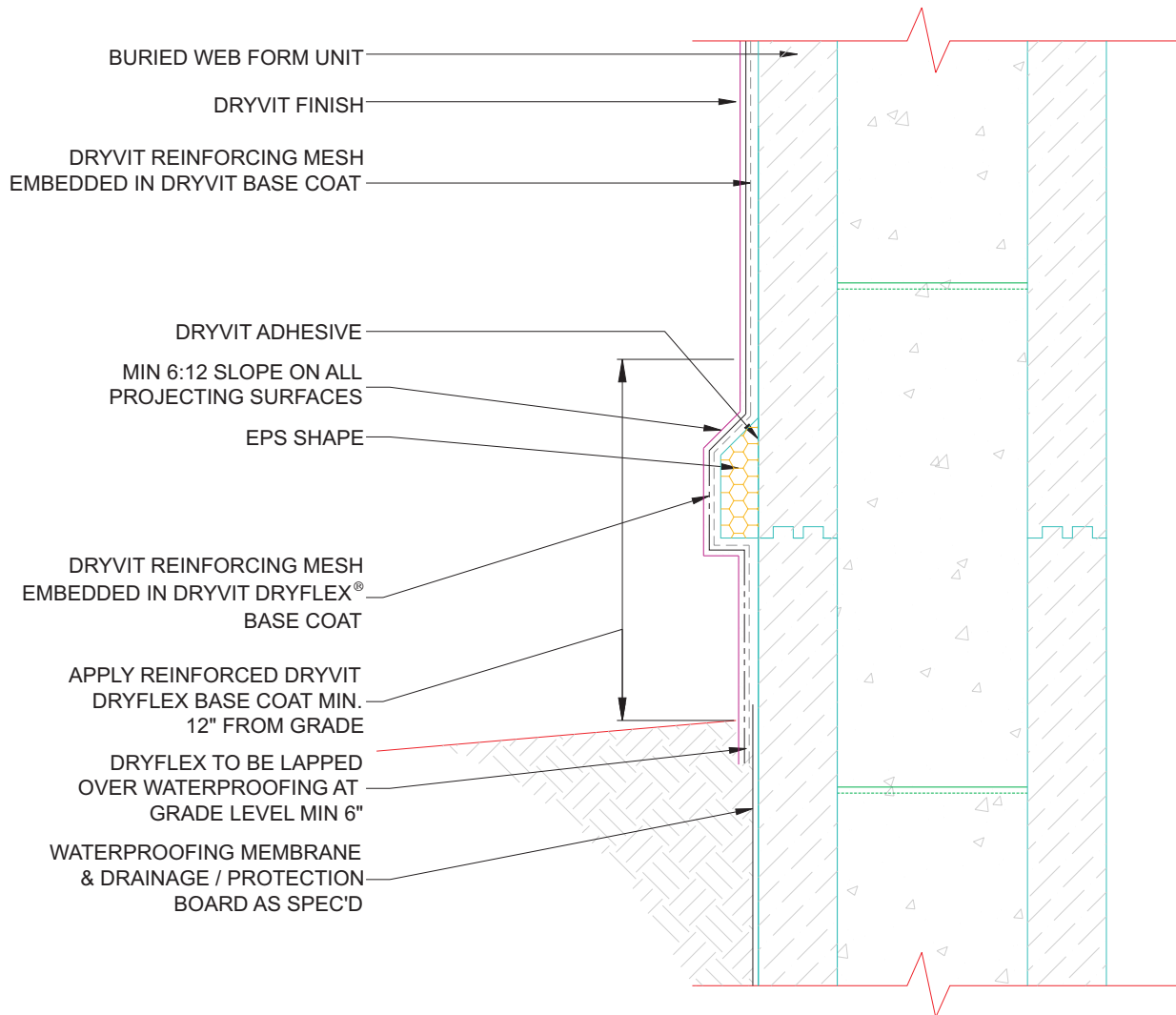
NOTE:

1. **DETAIL RECOMMENDED WHEN AN INSPECTION STRIP IS REQUIRED BY LOCAL JURISDICTION OR BY PEST CONTROL OPERATORS**
2. **MINOR CRACKING IS POSSIBLE IN THE FINISHED EXTERIOR SURFACE AT ICF/CONCRETE TRANSITIONS**
3. **DRYVIT RECOMMENDS THAT GROUND FLOOR APPLICATIONS AND ALL FACADES EXPOSED TO ABNORMAL STRESS, HIGH TRAFFIC, OR DELIBERATE IMPACT HAVE THE BASE COAT REINFORCED WITH PANZER® MESH PRIOR TO STANDARD™ OR STANDARD PLUS™ MESH. LOCATION OF HIGH IMPACT ZONES SHOULD BE INDICATED ON CONTRACT DOCUMENTS**

The architecture, engineering and design of the project using the Dryvit products is the responsibility of the project's design professional. All systems must comply with local building codes and standards. This detail is for general information and guidance only and Dryvit specifically disclaims any liability for the use of this detail and for the architecture, design, engineering or workmanship of any project. The project design professional determines, in its sole discretion, whether this detail or a functionally equivalent alternative is best suited for the project. Use of a functionally equivalent detail does not violate Dryvit's warranty. This detail is subject to change without notice. Contact Dryvit to insure you have the most recent version.



| APPROVED BY: | REV: | DATE: |
|--------------|------|-------|
| RS | 0 | 2/04 |



ICF Finish System

Base Detail - EPS Trim

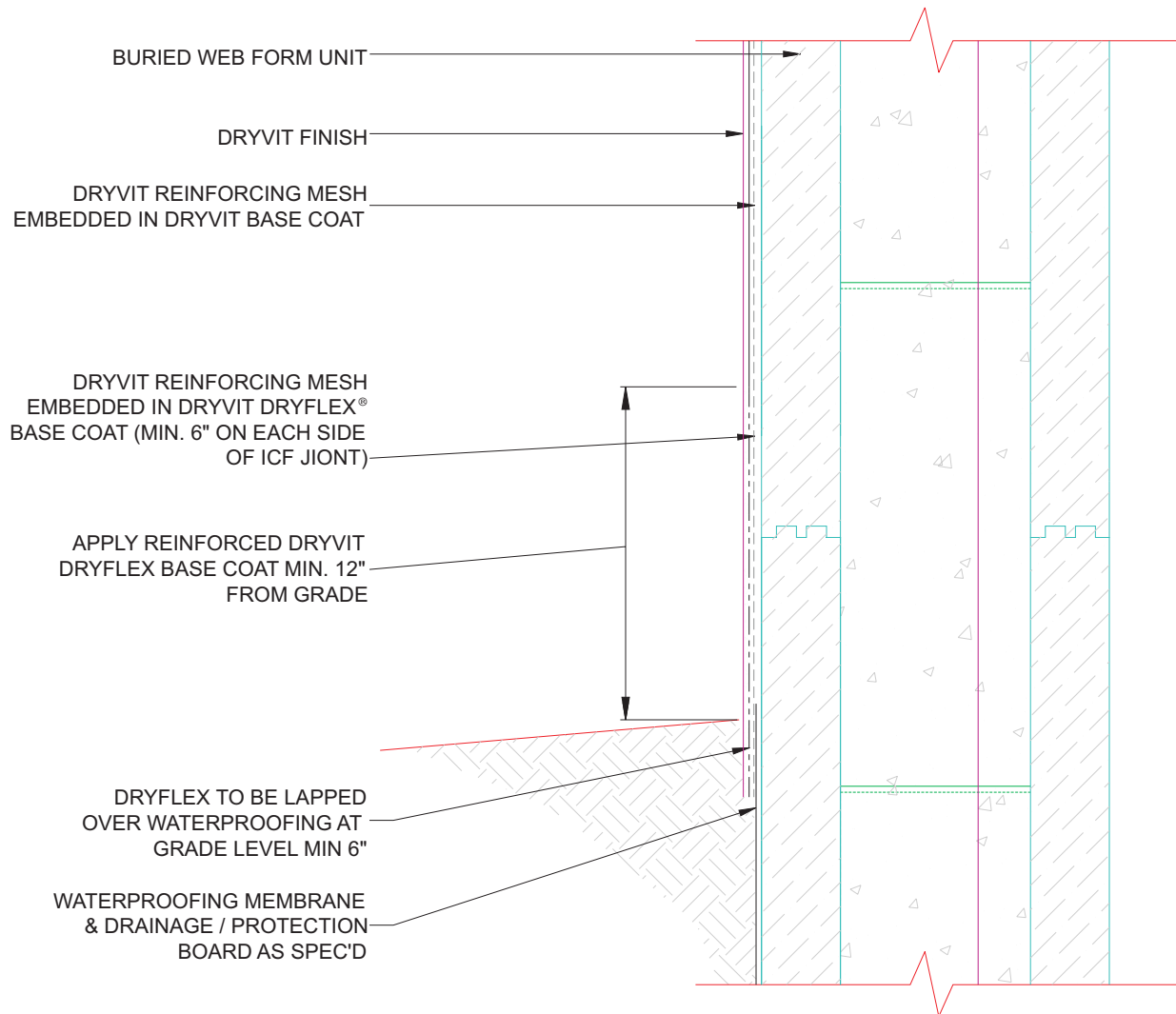
NOTE:

1. SEE DETAIL 1, 2, & 3 WHEN PROTECTION FROM WOOD BORING INSECTS IS DETERMINED TO BE NECESSARY

2. DRYVIT RECOMMENDS THAT GROUND FLOOR APPLICATIONS AND ALL FACADES EXPOSED TO ABNORMAL STRESS, HIGH TRAFFIC, OR DELIBERATE IMPACT HAVE THE BASE COAT REINFORCED WITH PANZER® MESH PRIOR TO STANDARD™ OR STANDARD PLUS™ MESH. LOCATION OF HIGH IMPACT ZONES SHOULD BE INDICATED ON CONTRACT DOCUMENTS

The architecture, engineering and design of the project using the Dryvit products is the responsibility of the project's design professional. All systems must comply with local building codes and standards. This detail is for general information and guidance only and Dryvit specifically disclaims any liability for the use of this detail and for the architecture, design, engineering or workmanship of any project. The project design professional determines, in its sole discretion, whether this detail or a functionally equivalent alternative is best suited for the project. Use of a functionally equivalent detail does not violate Dryvit's warranty. This detail is subject to change without notice. Contact Dryvit to insure you have the most recent version.

| APPROVED BY: | REV: | DATE: |
|--------------|------|-------|
| RS | 0 | 2/04 |



ICF Finish System

Base Detail - Without Inspection Strip

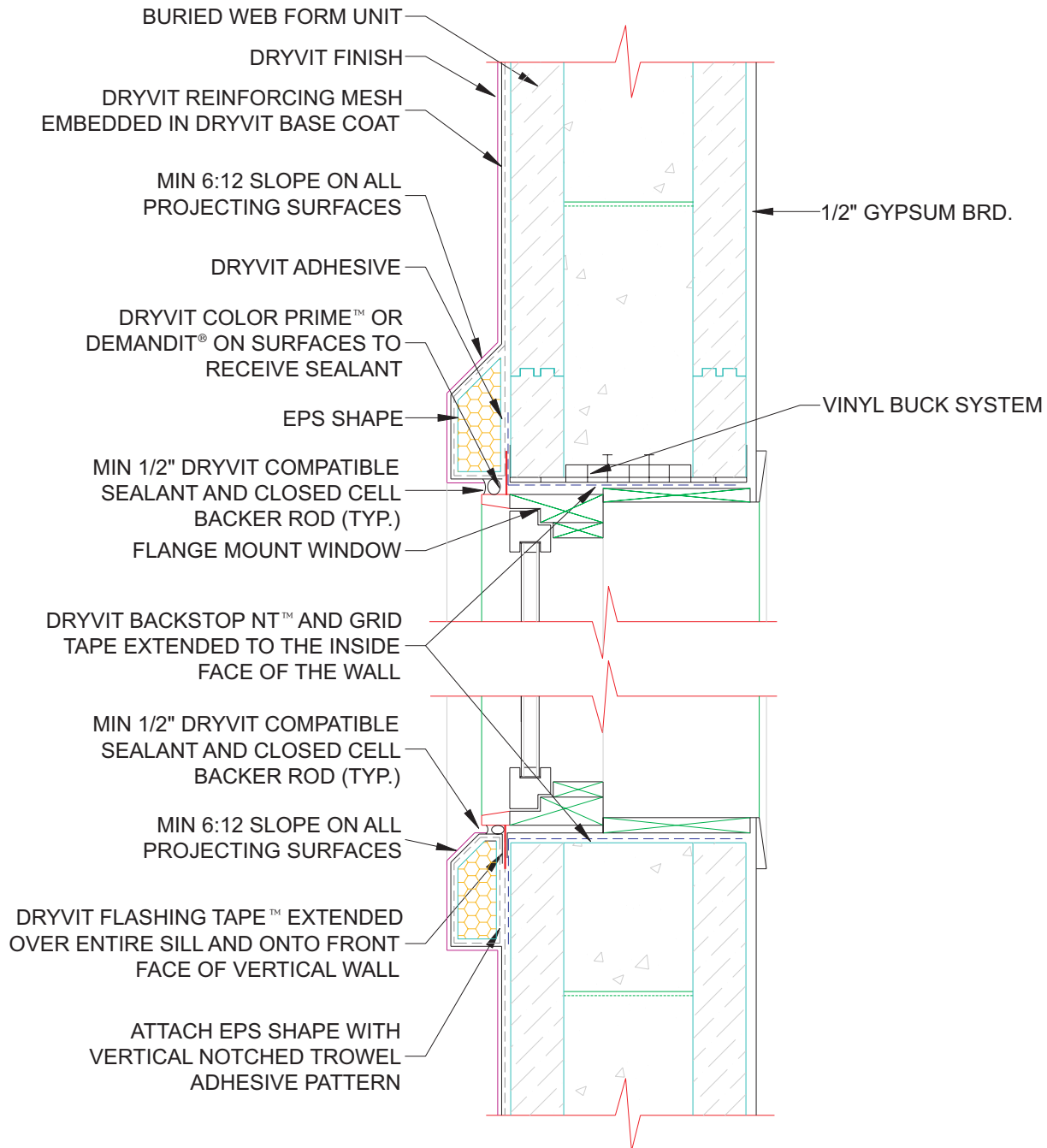
NOTE:

1. SEE DETAIL 1, 2, & 3 WHEN PROTECTION FROM WOOD BORING INSECTS IS DETERMINED TO BE NECESSARY
2. DRYVIT RECOMMENDS THAT GROUND FLOOR APPLICATIONS AND ALL FACADES EXPOSED TO ABNORMAL STRESS, HIGH TRAFFIC, OR DELIBERATE IMPACT HAVE THE BASE COAT REINFORCED WITH PANZER® MESH PRIOR TO STANDARD™ OR STANDARD PLUS™ MESH. LOCATION OF HIGH IMPACT ZONES SHOULD BE INDICATED ON CONTRACT DOCUMENTS

The architecture, engineering and design of the project using the Dryvit products is the responsibility of the project's design professional. All systems must comply with local building codes and standards. This detail is for general information and guidance only and Dryvit specifically disclaims any liability for the use of this detail and for the architecture, design, engineering or workmanship of any project. The project design professional determines, in its sole discretion, whether this detail or a functionally equivalent alternative is best suited for the project. Use of a functionally equivalent detail does not violate Dryvit's warranty. This detail is subject to change without notice. Contact Dryvit to insure you have the most recent version.



| APPROVED BY: | REV: | DATE: |
|--------------|------|-------|
| RS | 0 | 2/04 |



ICF Finish System

Head/Sill - Bucksaver Rough Buck With EPS Trim

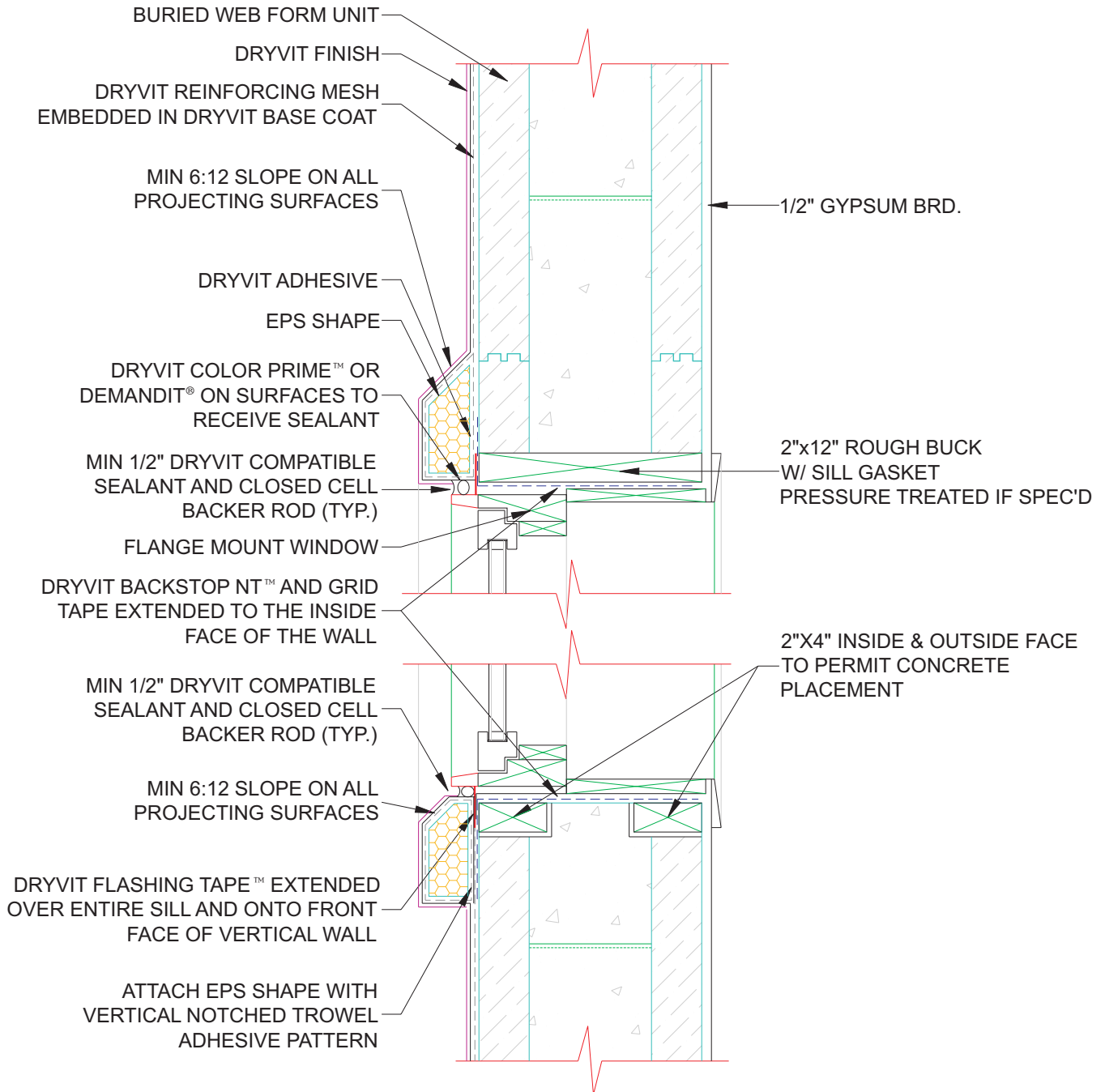
NOTE:

1. THIS DETAIL IS RECOMMENDED FOR USE IN COMBUSTIBLE CONSTRUCTION ONLY.
2. DRYVIT RECOMMENDS THAT GROUND FLOOR APPLICATIONS AND ALL FACADES EXPOSED TO ABNORMAL STRESS, HIGH TRAFFIC, OR DELIBERATE IMPACT HAVE THE BASE COAT REINFORCED WITH PANZER® MESH PRIOR TO STANDARD™ OR STANDARD PLUS™ MESH. LOCATION OF HIGH IMPACT ZONES SHOULD BE INDICATED ON CONTRACT DOCUMENTS

The architecture, engineering and design of the project using the Dryvit products is the responsibility of the project's design professional. All systems must comply with local building codes and standards. This detail is for general information and guidance only and Dryvit specifically disclaims any liability for the use of this detail and for the architecture, design, engineering or workmanship of any project. The project design professional determines, in its sole discretion, whether this detail or a functionally equivalent alternative is best suited for the project. Use of a functionally equivalent detail does not violate Dryvit's warranty. This detail is subject to change without notice. Contact Dryvit to insure you have the most recent version.



| APPROVED BY: | REV: | DATE: |
|--------------|------|-------|
| RS | 0 | 2/04 |



ICF Finish System

Head/Sill - Wood Rough Buck With EPS Trim

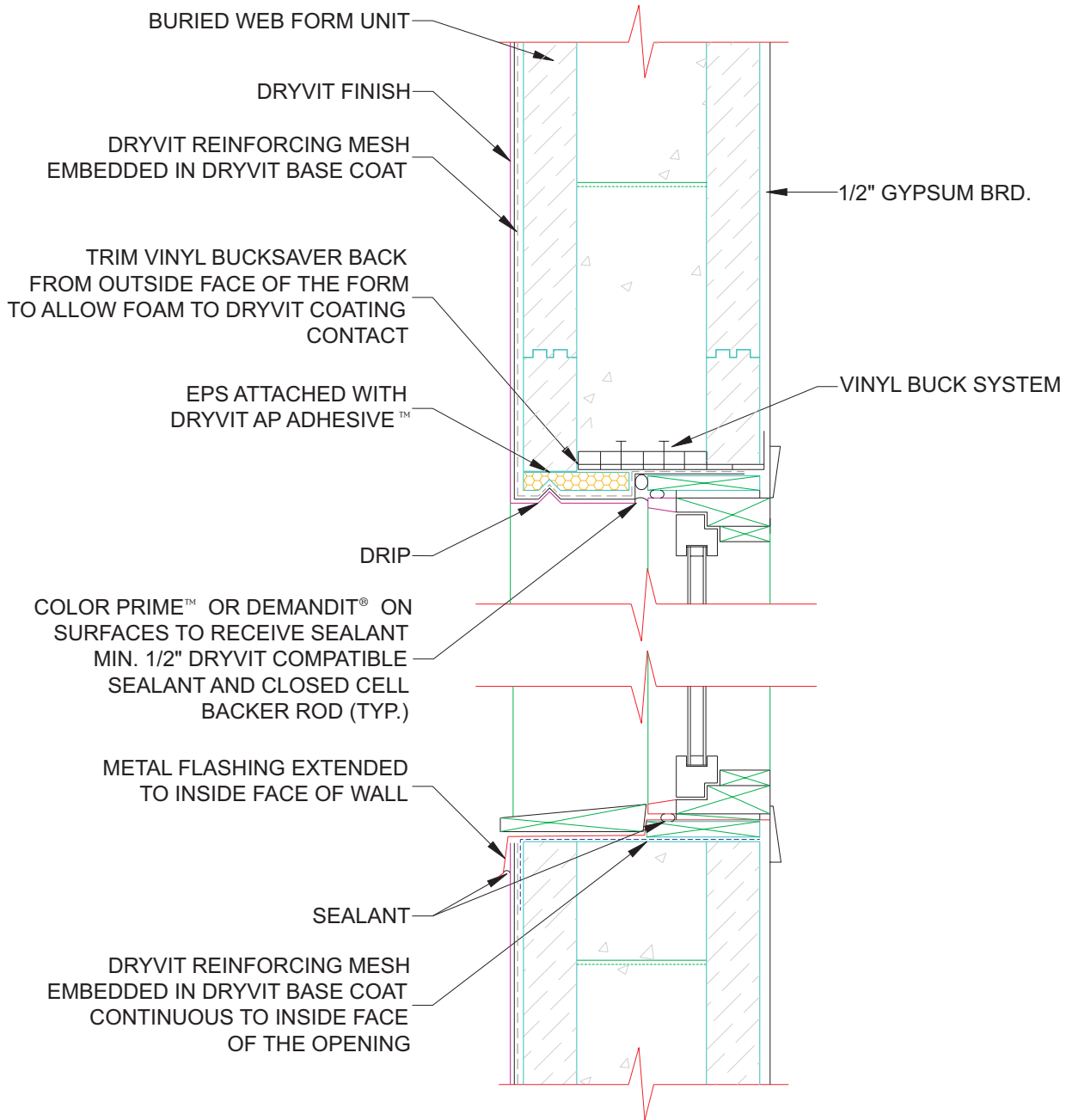
NOTE:

1. THIS DETAIL IS RECOMMENDED FOR USE IN COMBUSTIBLE CONSTRUCTION ONLY.
2. DRYVIT RECOMMENDS THAT GROUND FLOOR APPLICATIONS AND ALL FACADES EXPOSED TO ABNORMAL STRESS, HIGH TRAFFIC, OR DELIBERATE IMPACT HAVE THE BASE COAT REINFORCED WITH PANZER® MESH PRIOR TO STANDARD™ OR STANDARD PLUS™ MESH. LOCATION OF HIGH IMPACT ZONES SHOULD BE INDICATED ON CONTRACT DOCUMENTS

The architecture, engineering and design of the project using the Dryvit products is the responsibility of the project's design professional. All systems must comply with local building codes and standards. This detail is for general information and guidance only and Dryvit specifically disclaims any liability for the use of this detail and for the architecture, design, engineering or workmanship of any project. The project design professional determines, in its sole discretion, whether this detail or a functionally equivalent alternative is best suited for the project. Use of a functionally equivalent detail does not violate Dryvit's warranty. This detail is subject to change without notice. Contact Dryvit to insure you have the most recent version.



| APPROVED BY: | REV: | DATE: |
|--------------|------|-------|
| RS | 0 | 2/04 |



ICF Finish System

Head/Sill - Bucksaver Rough Buck

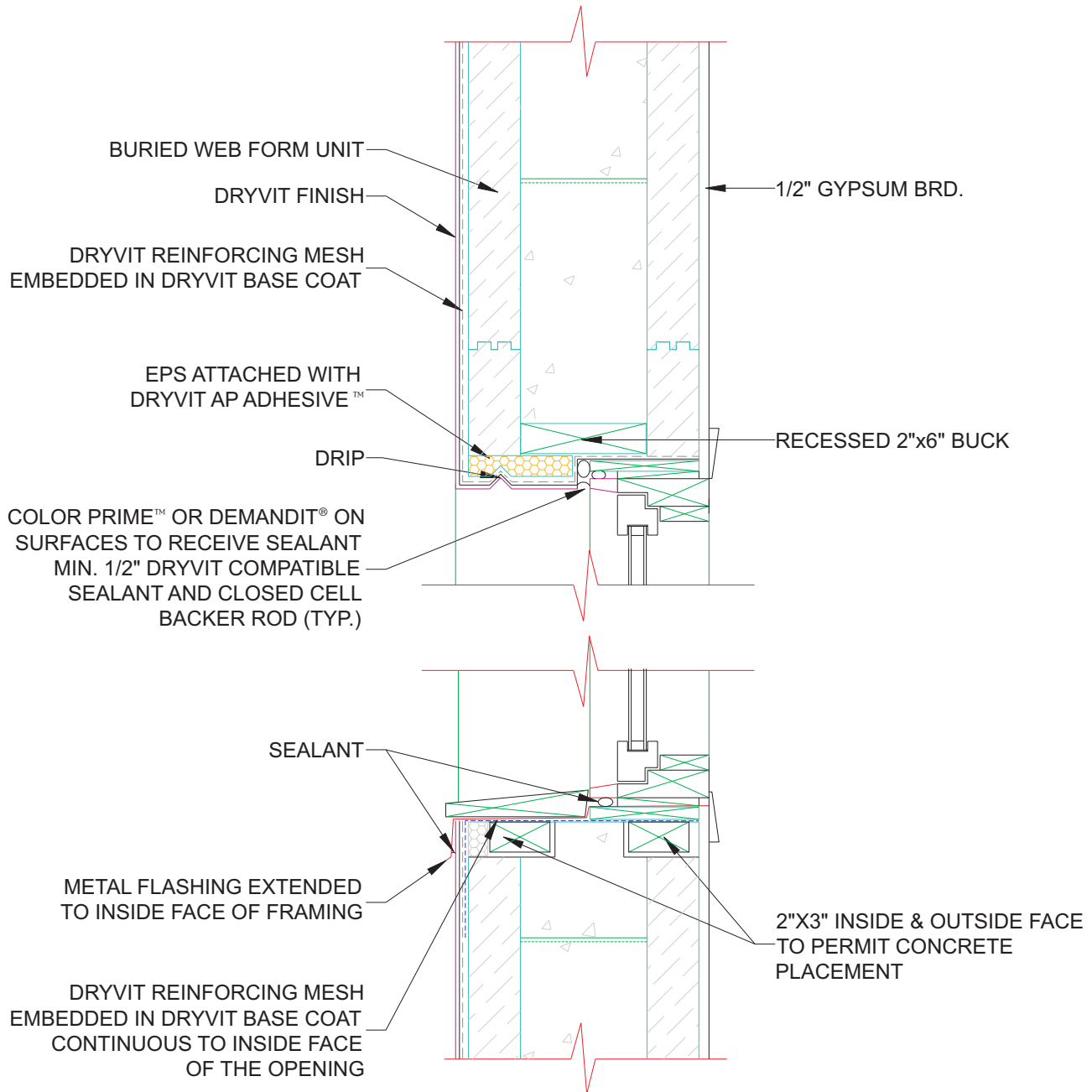
NOTE:

1. THIS DETAIL IS RECOMMENDED FOR USE IN COMBUSTIBLE CONSTRUCTION ONLY.
2. DRYVIT RECOMMENDS THAT GROUND FLOOR APPLICATIONS AND ALL FACADES EXPOSED TO ABNORMAL STRESS, HIGH TRAFFIC, OR DELIBERATE IMPACT HAVE THE BASE COAT REINFORCED WITH PANZER® MESH PRIOR TO STANDARD™ OR STANDARD PLUS™ MESH. LOCATION OF HIGH IMPACT ZONES SHOULD BE INDICATED ON CONTRACT DOCUMENTS

The architecture, engineering and design of the project using the Dryvit products is the responsibility of the project's design professional. All systems must comply with local building codes and standards. This detail is for general information and guidance only and Dryvit specifically disclaims any liability for the use of this detail and for the architecture, design, engineering or workmanship of any project. The project design professional determines, in its sole discretion, whether this detail or a functionally equivalent alternative is best suited for the project. Use of a functionally equivalent detail does not violate Dryvit's warranty. This detail is subject to change without notice. Contact Dryvit to insure you have the most recent version.



| APPROVED BY: | REV: | DATE: |
|--------------|------|-------|
| RS | 0 | 2/04 |



ICF Finish System

Head/Sill - Wood Rough Buck

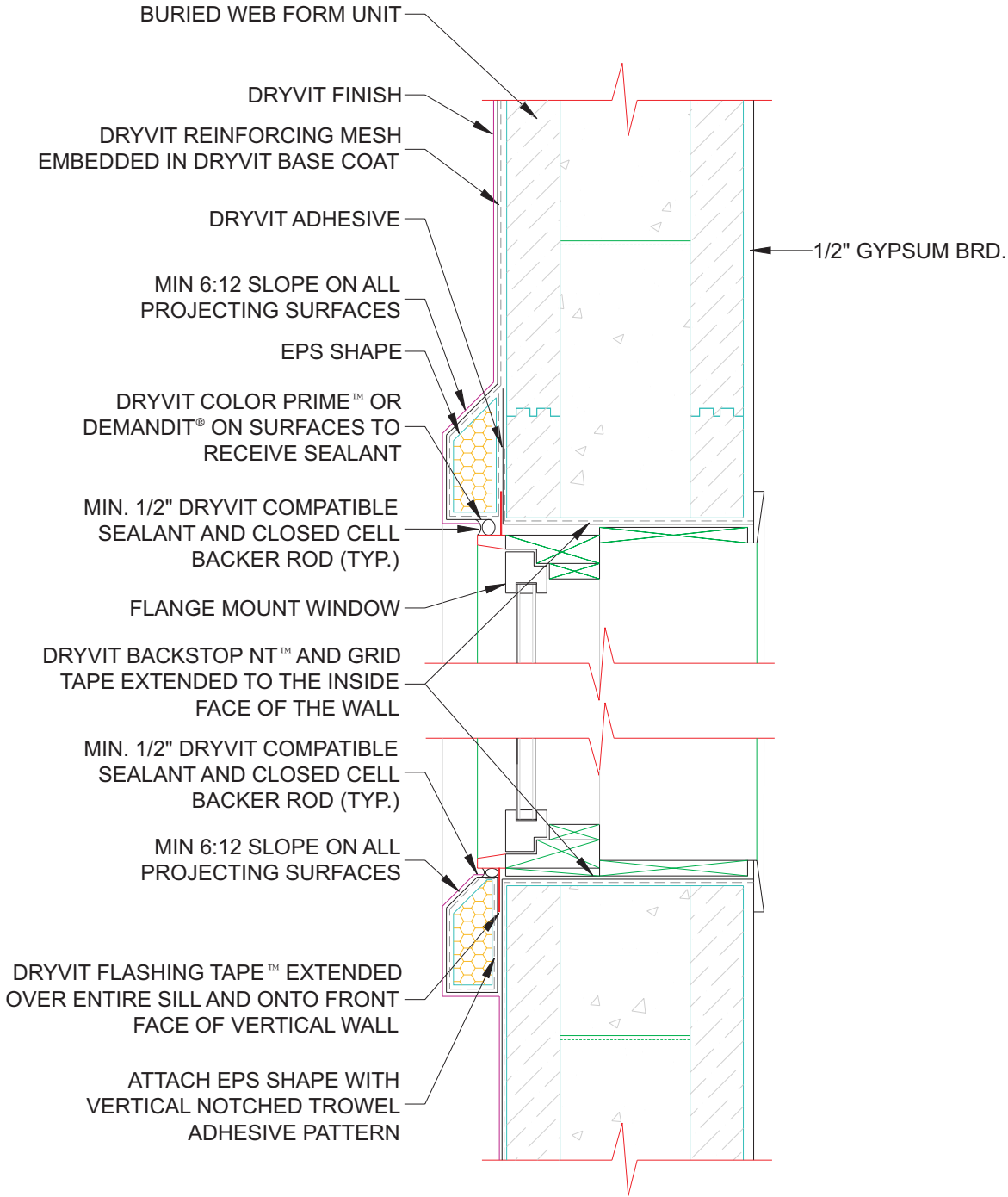
NOTE:

1. THIS DETAIL IS RECOMMENDED FOR USE IN COMBUSTIBLE CONSTRUCTION ONLY.
2. DRYVIT RECOMMENDS THAT GROUND FLOOR APPLICATIONS AND ALL FACADES EXPOSED TO ABNORMAL STRESS, HIGH TRAFFIC, OR DELIBERATE IMPACT HAVE THE BASE COAT REINFORCED WITH PANZER® MESH PRIOR TO STANDARD™ OR STANDARD PLUS™ MESH. LOCATION OF HIGH IMPACT ZONES SHOULD BE INDICATED ON CONTRACT DOCUMENTS

The architecture, engineering and design of the project using the Dryvit products is the responsibility of the project's design professional. All systems must comply with local building codes and standards. This detail is for general information and guidance only and Dryvit specifically disclaims any liability for the use of this detail and for the architecture, design, engineering or workmanship of any project. The project design professional determines, in its sole discretion, whether this detail or a functionally equivalent alternative is best suited for the project. Use of a functionally equivalent detail does not violate Dryvit's warranty. This detail is subject to change without notice. Contact Dryvit to insure you have the most recent version.



| APPROVED BY: | REV: | DATE: |
|--------------|------|-------|
| RS | 0 | 2/04 |



ICF Finish System

Head/Sill - Flange Mount

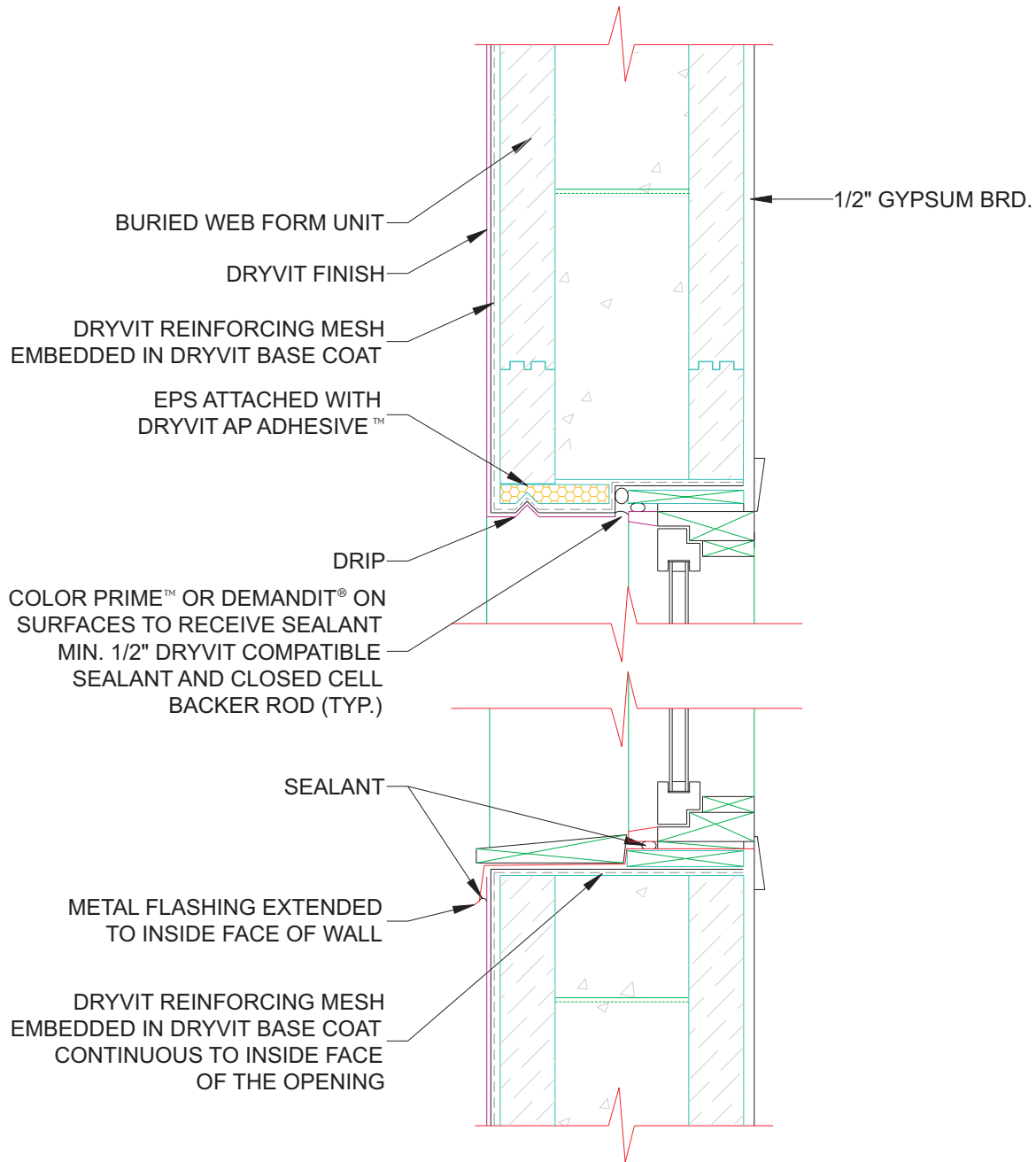
NOTE:

- 1. DRYVIT RECOMMENDS THAT GROUND FLOOR APPLICATIONS AND ALL FACADES EXPOSED TO ABNORMAL STRESS, HIGH TRAFFIC, OR DELIBERATE IMPACT HAVE THE BASE COAT REINFORCED WITH PANZER® MESH PRIOR TO STANDARD™ OR STANDARD PLUS™ MESH. LOCATION OF HIGH IMPACT ZONES SHOULD BE INDICATED ON CONTRACT DOCUMENTS

The architecture, engineering and design of the project using the Dryvit products is the responsibility of the project's design professional. All systems must comply with local building codes and standards. This detail is for general information and guidance only and Dryvit specifically disclaims any liability for the use of this detail and for the architecture, design, engineering or workmanship of any project. The project design professional determines, in its sole discretion, whether this detail or a functionally equivalent alternative is best suited for the project. Use of a functionally equivalent detail does not violate Dryvit's warranty. This detail is subject to change without notice. Contact Dryvit to insure you have the most recent version.



| APPROVED BY: | REV: | DATE: |
|--------------|------|-------|
| RS | 0 | 2/04 |



ICF Finish System

Head/Sill - Recessed

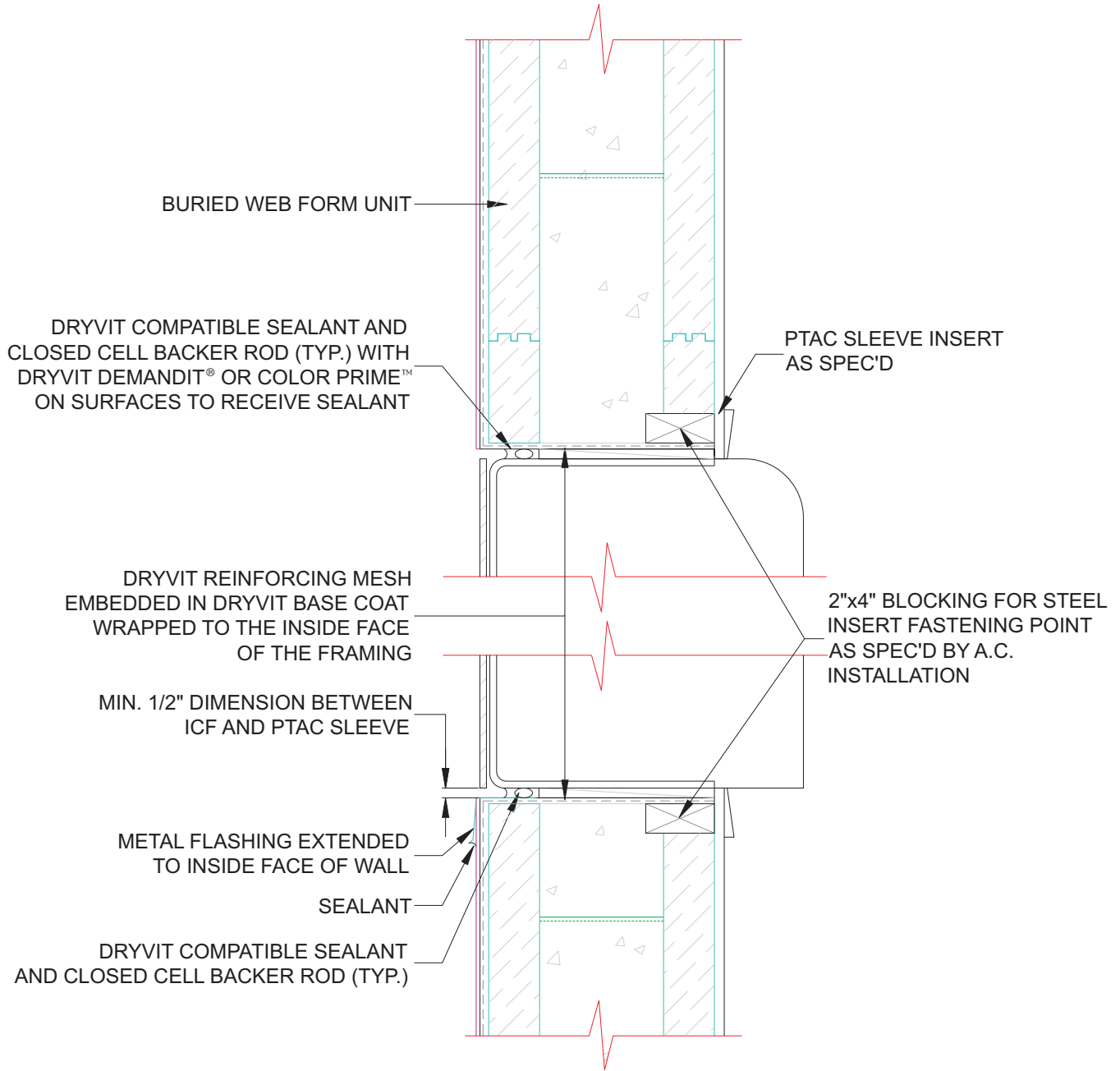
NOTE:

1. DRYVIT RECOMMENDS THAT GROUND FLOOR APPLICATIONS AND ALL FACADES EXPOSED TO ABNORMAL STRESS, HIGH TRAFFIC, OR DELIBERATE IMPACT HAVE THE BASE COAT REINFORCED WITH PANZER® MESH PRIOR TO STANDARD™ OR STANDARD PLUS™ MESH. LOCATION OF HIGH IMPACT ZONES SHOULD BE INDICATED ON CONTRACT DOCUMENTS

The architecture, engineering and design of the project using the Dryvit products is the responsibility of the project's design professional. All systems must comply with local building codes and standards. This detail is for general information and guidance only and Dryvit specifically disclaims any liability for the use of this detail and for the architecture, design, engineering or workmanship of any project. The project design professional determines, in its sole discretion, whether this detail or a functionally equivalent alternative is best suited for the project. Use of a functionally equivalent detail does not violate Dryvit's warranty. This detail is subject to change without notice. Contact Dryvit to insure you have the most recent version.



| APPROVED BY: | REV: | DATE: |
|--------------|------|-------|
| RS | 0 | 2/04 |



ICF Finish System

A/C Penetration

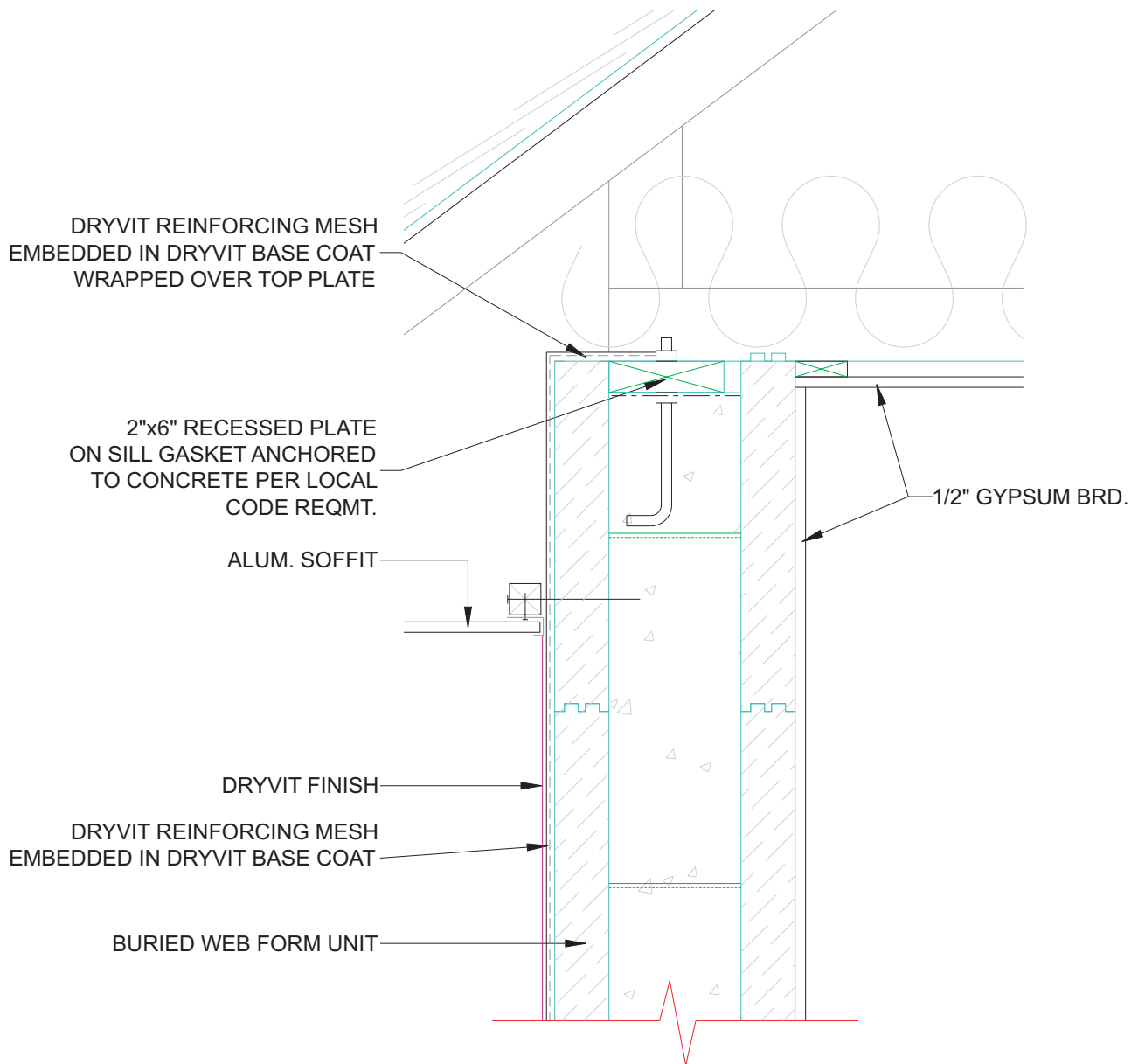
NOTE:

1. DRYVIT RECOMMENDS THAT GROUND FLOOR APPLICATIONS AND ALL FACADES EXPOSED TO ABNORMAL STRESS, HIGH TRAFFIC, OR DELIBERATE IMPACT HAVE THE BASE COAT REINFORCED WITH PANZER® MESH PRIOR TO STANDARD™ OR STANDARD PLUS™ MESH. LOCATION OF HIGH IMPACT ZONES SHOULD BE INDICATED ON CONTRACT DOCUMENTS

The architecture, engineering and design of the project using the Dryvit products is the responsibility of the project's design professional. All systems must comply with local building codes and standards. This detail is for general information and guidance only and Dryvit specifically disclaims any liability for the use of this detail and for the architecture, design, engineering or workmanship of any project. The project design professional determines, in its sole discretion, whether this detail or a functionally equivalent alternative is best suited for the project. Use of a functionally equivalent detail does not violate Dryvit's warranty. This detail is subject to change without notice. Contact Dryvit to insure you have the most recent version.



| APPROVED BY: | REV: | DATE: |
|--------------|------|-------|
| RS | 0 | 2/04 |



ICF Finish System

Eave Detail - Recessed Top Plate

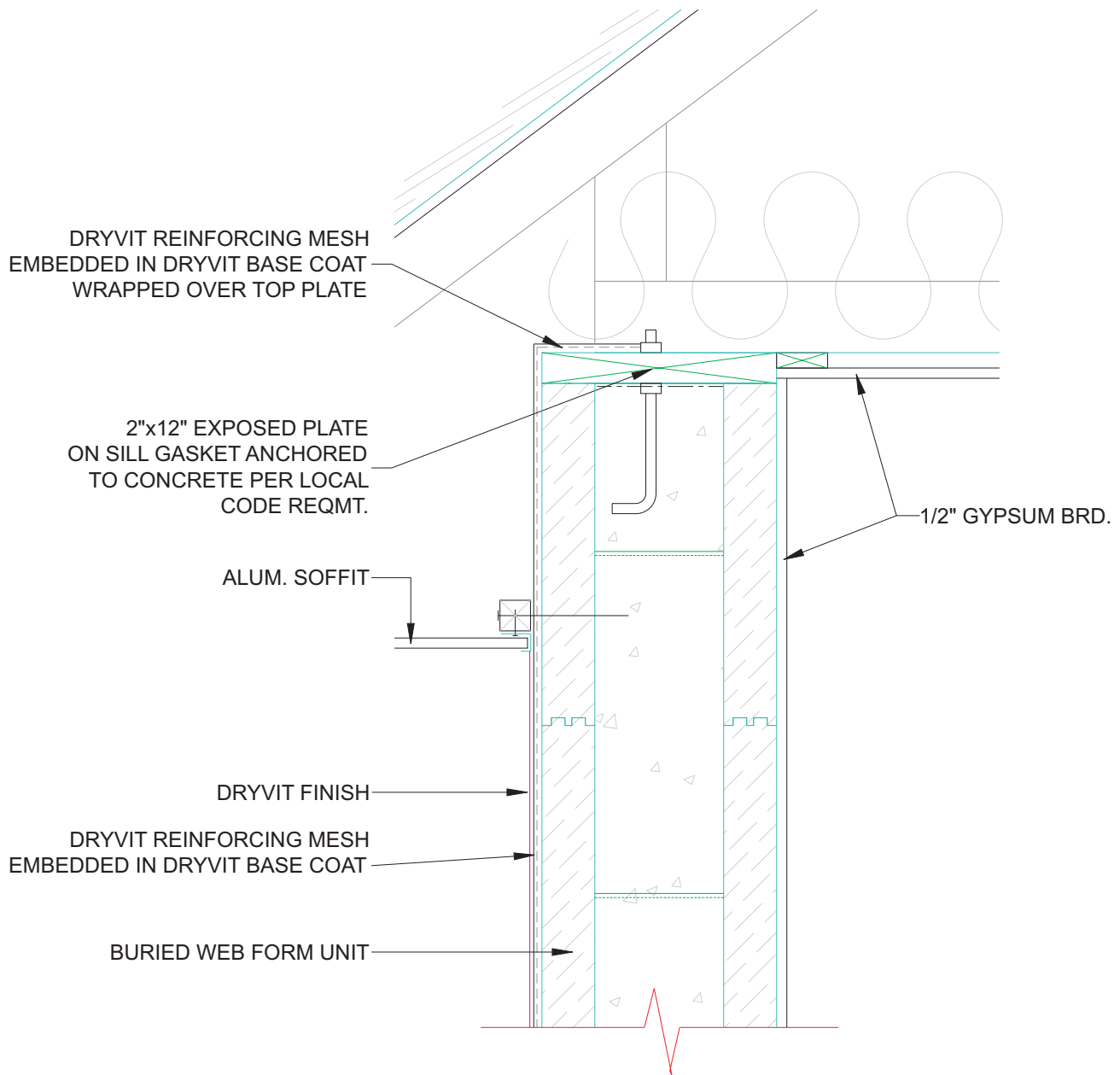
NOTE:

1. DRYVIT RECOMMENDS THAT GROUND FLOOR APPLICATIONS AND ALL FACADES EXPOSED TO ABNORMAL STRESS, HIGH TRAFFIC, OR DELIBERATE IMPACT HAVE THE BASE COAT REINFORCED WITH PANZER® MESH PRIOR TO STANDARD™ OR STANDARD PLUS™ MESH. LOCATION OF HIGH IMPACT ZONES SHOULD BE INDICATED ON CONTRACT DOCUMENTS

The architecture, engineering and design of the project using the Dryvit products is the responsibility of the project's design professional. All systems must comply with local building codes and standards. This detail is for general information and guidance only and Dryvit specifically disclaims any liability for the use of this detail and for the architecture, design, engineering or workmanship of any project. The project design professional determines, in its sole discretion, whether this detail or a functionally equivalent alternative is best suited for the project. Use of a functionally equivalent detail does not violate Dryvit's warranty. This detail is subject to change without notice. Contact Dryvit to insure you have the most recent version.



| APPROVED BY: | REV: | DATE: |
|--------------|------|-------|
| RS | 0 | 2/04 |



ICF Finish System

Eave Detail - Exposed Top Plate

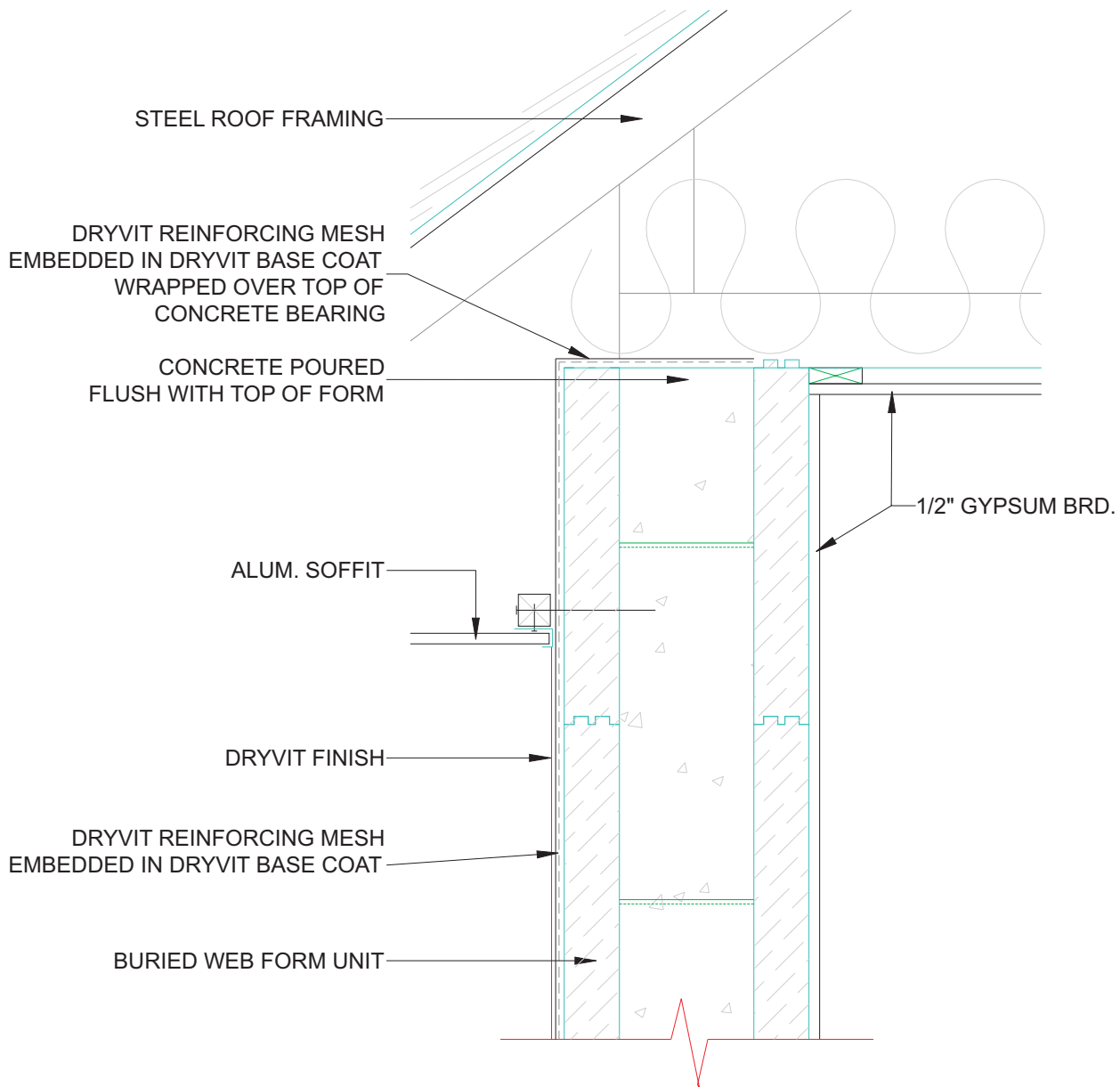
NOTE:

1. DRYVIT RECOMMENDS THAT GROUND FLOOR APPLICATIONS AND ALL FACADES EXPOSED TO ABNORMAL STRESS, HIGH TRAFFIC, OR DELIBERATE IMPACT HAVE THE BASE COAT REINFORCED WITH PANZER® MESH PRIOR TO STANDARD™ OR STANDARD PLUS™ MESH. LOCATION OF HIGH IMPACT ZONES SHOULD BE INDICATED ON CONTRACT DOCUMENTS

The architecture, engineering and design of the project using the Dryvit products is the responsibility of the project's design professional. All systems must comply with local building codes and standards. This detail is for general information and guidance only and Dryvit specifically disclaims any liability for the use of this detail and for the architecture, design, engineering or workmanship of any project. The project design professional determines, in its sole discretion, whether this detail or a functionally equivalent alternative is best suited for the project. Use of a functionally equivalent detail does not violate Dryvit's warranty. This detail is subject to change without notice. Contact Dryvit to insure you have the most recent version.



| APPROVED BY: | REV: | DATE: |
|--------------|------|-------|
| RS | 0 | 2/04 |



ICF Finish System

Eave Detail - Steel Roof Rafters

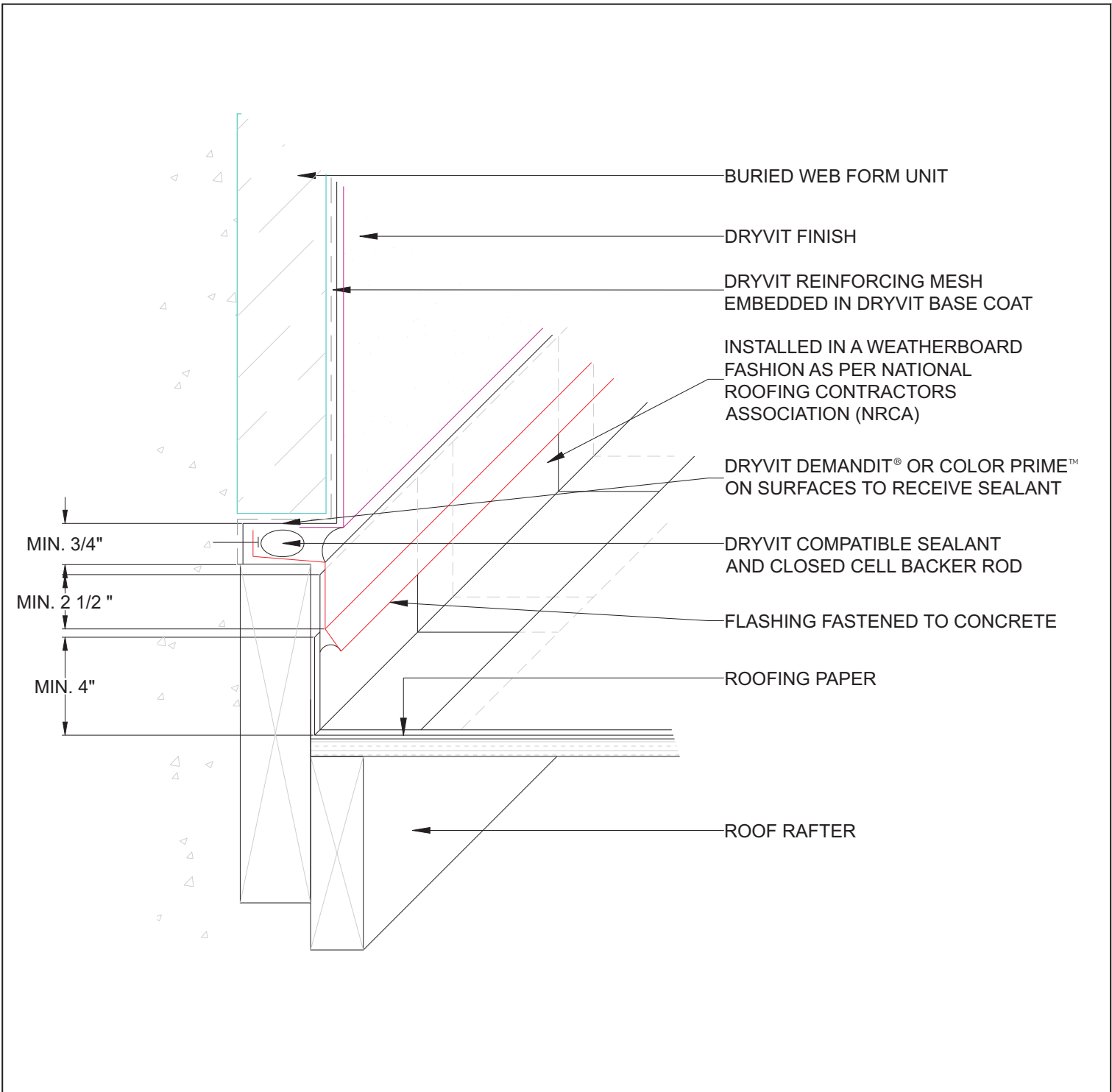
NOTE:

1. DRYVIT RECOMMENDS THAT GROUND FLOOR APPLICATIONS AND ALL FACADES EXPOSED TO ABNORMAL STRESS, HIGH TRAFFIC, OR DELIBERATE IMPACT HAVE THE BASE COAT REINFORCED WITH PANZER® MESH PRIOR TO STANDARD™ OR STANDARD PLUS™ MESH. LOCATION OF HIGH IMPACT ZONES SHOULD BE INDICATED ON CONTRACT DOCUMENTS

The architecture, engineering and design of the project using the Dryvit products is the responsibility of the project's design professional. All systems must comply with local building codes and standards. This detail is for general information and guidance only and Dryvit specifically disclaims any liability for the use of this detail and for the architecture, design, engineering or workmanship of any project. The project design professional determines, in its sole discretion, whether this detail or a functionally equivalent alternative is best suited for the project. Use of a functionally equivalent detail does not violate Dryvit's warranty. This detail is subject to change without notice. Contact Dryvit to insure you have the most recent version.



| APPROVED BY: | REV: | DATE: |
|--------------|------|-------|
| RS | 0 | 2/04 |



ICF Finish System

Sloped Roof/Wall Intersection

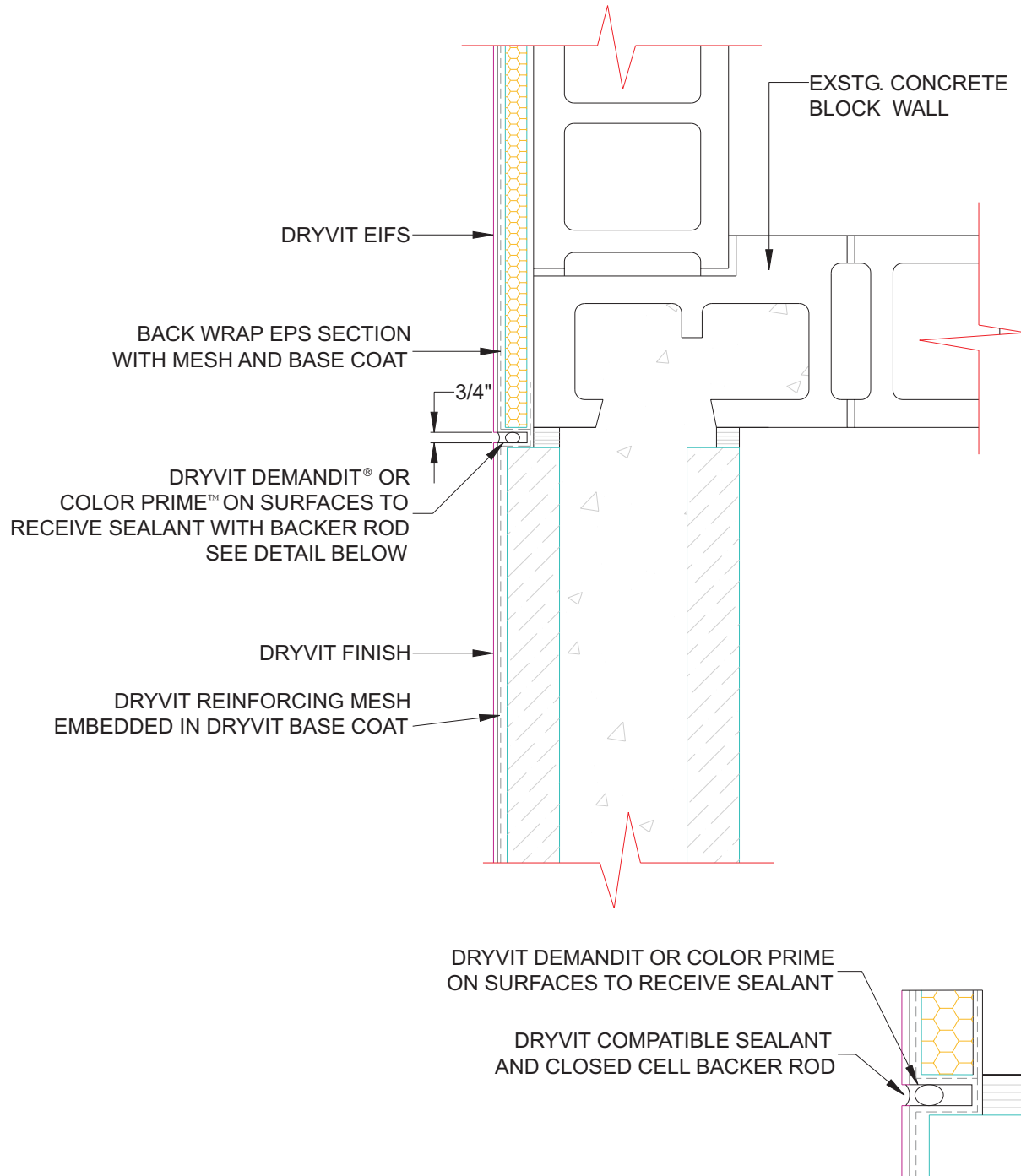
NOTE:

1. DRYVIT RECOMMENDS THAT GROUND FLOOR APPLICATIONS AND ALL FACADES EXPOSED TO ABNORMAL STRESS, HIGH TRAFFIC, OR DELIBERATE IMPACT HAVE THE BASE COAT REINFORCED WITH PANZER® MESH PRIOR TO STANDARD™ OR STANDARD PLUS™ MESH. LOCATION OF HIGH IMPACT ZONES SHOULD BE INDICATED ON CONTRACT DOCUMENTS
2. SHINGLES SHOULD BE INSTALLED PER NRCA GUIDELINES TO OVERLAP STEP FLASHINGS AND EXTEND ALL THE WAY TO THE VERTICAL WALL

The architecture, engineering and design of the project using the Dryvit products is the responsibility of the project's design professional. All systems must comply with local building codes and standards. This detail is for general information and guidance only and Dryvit specifically disclaims any liability for the use of this detail and for the architecture, design, engineering or workmanship of any project. The project design professional determines, in its sole discretion, whether this detail or a functionally equivalent alternative is best suited for the project. Use of a functionally equivalent detail does not violate Dryvit's warranty. This detail is subject to change without notice. Contact Dryvit to insure you have the most recent version.



| APPROVED BY: | REV: | DATE: |
|--------------|------|-------|
| RS | 0 | 2/04 |



ICF Finish System

Transition to Existing Wall

NOTE:

1. DRYVIT RECOMMENDS THAT GROUND FLOOR APPLICATIONS AND ALL FACADES EXPOSED TO ABNORMAL STRESS, HIGH TRAFFIC, OR DELIBERATE IMPACT HAVE THE BASE COAT REINFORCED WITH PANZER® MESH PRIOR TO STANDARD™ OR STANDARD PLUS™ MESH. LOCATION OF HIGH IMPACT ZONES SHOULD BE INDICATED ON CONTRACT DOCUMENTS

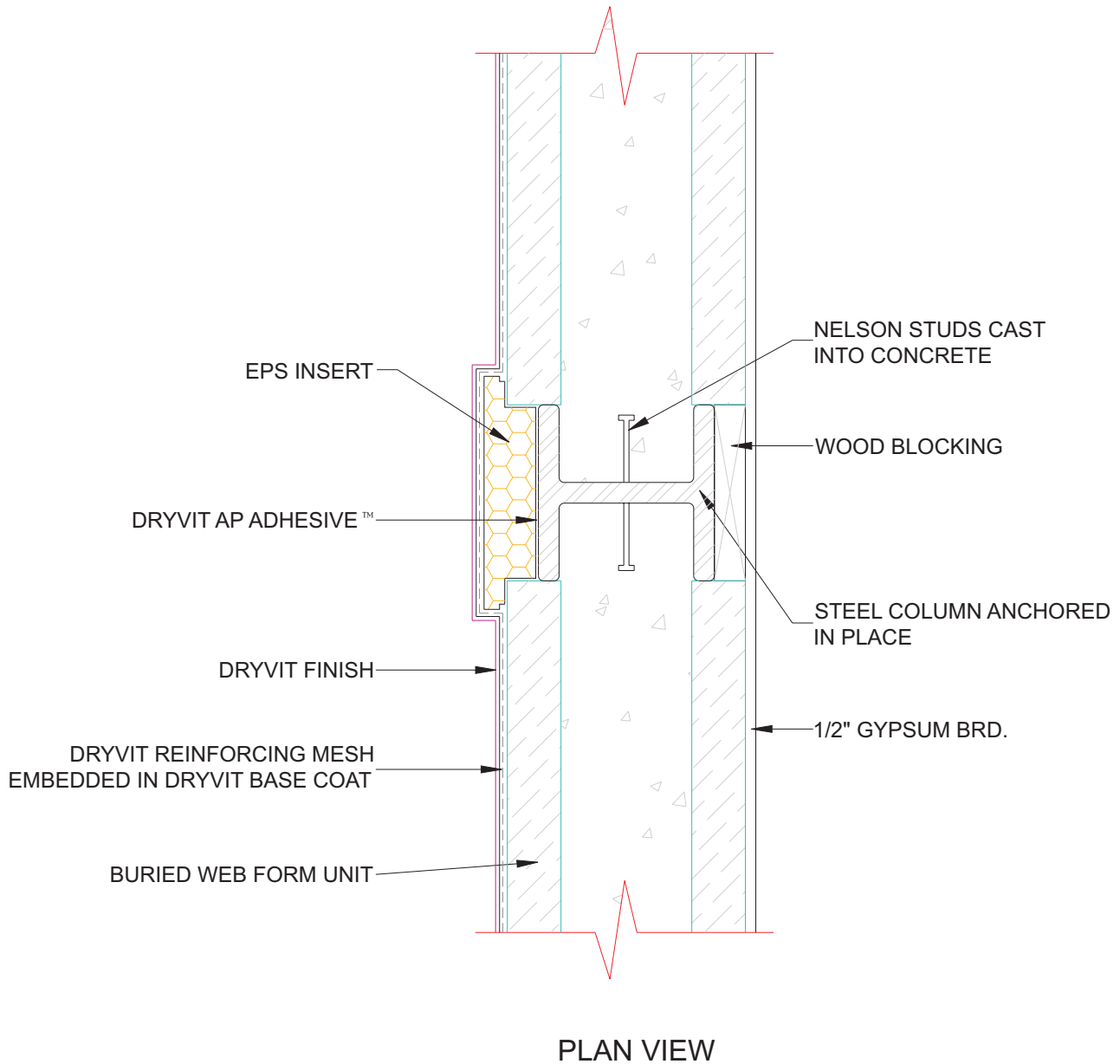
2. IT IS THE RESPONSIBILITY OF THE DESIGNER AND CONTRACTOR TO DESIGN AND CONSTRUCT THE WALLS SO THE EXTERIOR FINISH OF BOTH THE ICF WALL AND THE CMU WALL ARE IN THE SAME PLANE

3. THE JOINT BETWEEN THE TWO WALLS MAY OR MAY NOT BE A STRUCTURAL CONNECTION WITH DOWELS AS SPEC'D BY THE STRUCTURAL ENGINEER

The architecture, engineering and design of the project using the Dryvit products is the responsibility of the project's design professional. All systems must comply with local building codes and standards. This detail is for general information and guidance only and Dryvit specifically disclaims any liability for the use of this detail and for the architecture, design, engineering or workmanship of any project. The project design professional determines, in its sole discretion, whether this detail or a functionally equivalent alternative is best suited for the project. Use of a functionally equivalent detail does not violate Dryvit's warranty. This detail is subject to change without notice. Contact Dryvit to insure you have the most recent version.



| APPROVED BY: | REV: | DATE: |
|--------------|------|-------|
| RS | 0 | 2/04 |



ICF Finish System

Transition Across Column

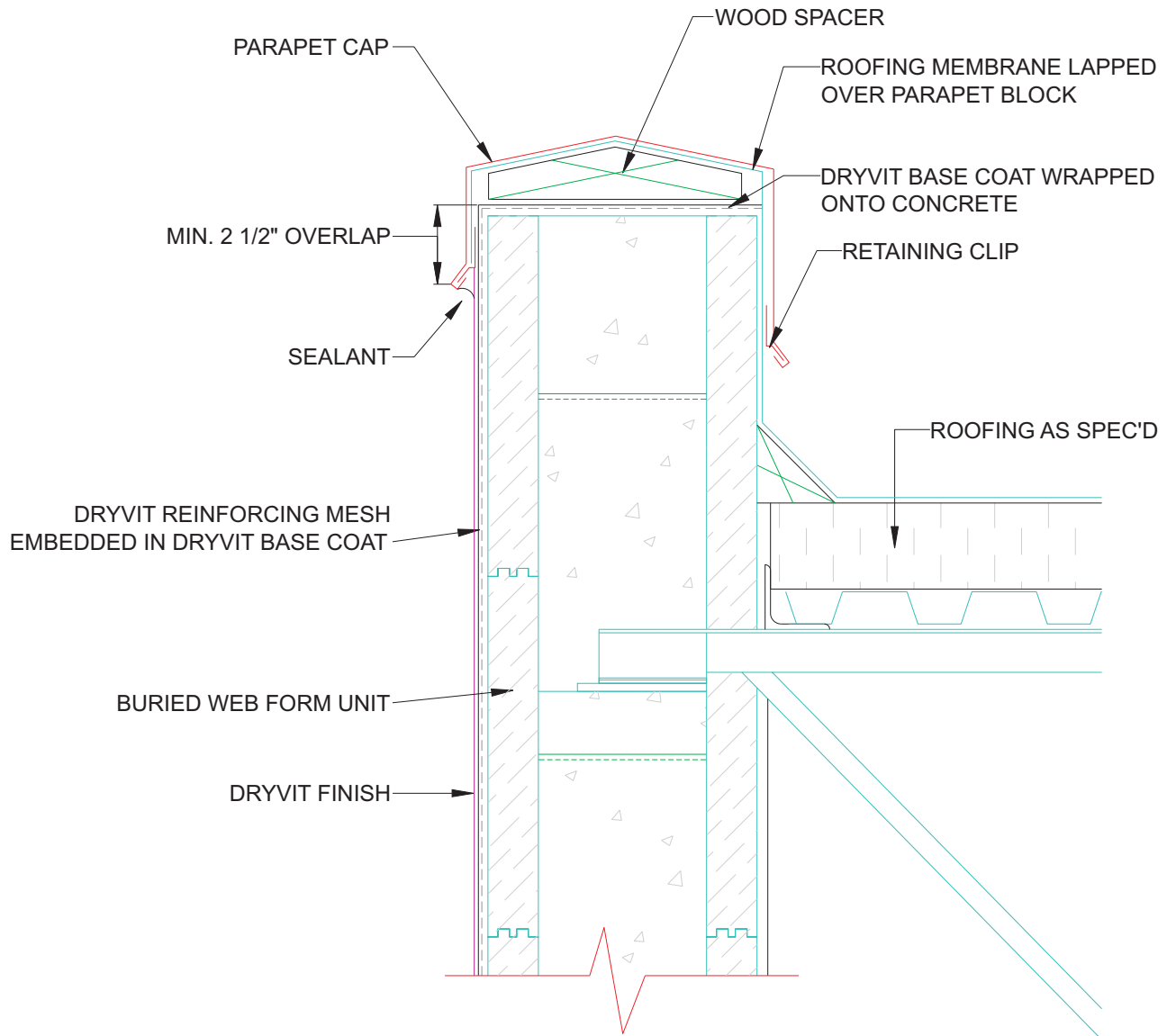
NOTE:

1. DRYVIT RECOMMENDS THAT GROUND FLOOR APPLICATIONS AND ALL FACADES EXPOSED TO ABNORMAL STRESS, HIGH TRAFFIC, OR DELIBERATE IMPACT HAVE THE BASE COAT REINFORCED WITH PANZER® MESH PRIOR TO STANDARD™ OR STANDARD PLUS™ MESH. LOCATION OF HIGH IMPACT ZONES SHOULD BE INDICATED ON CONTRACT DOCUMENTS

The architecture, engineering and design of the project using the Dryvit products is the responsibility of the project's design professional. All systems must comply with local building codes and standards. This detail is for general information and guidance only and Dryvit specifically disclaims any liability for the use of this detail and for the architecture, design, engineering or workmanship of any project. The project design professional determines, in its sole discretion, whether this detail or a functionally equivalent alternative is best suited for the project. Use of a functionally equivalent detail does not violate Dryvit's warranty. This detail is subject to change without notice. Contact Dryvit to insure you have the most recent version.



| APPROVED BY: | REV: | DATE: |
|--------------|------|-------|
| RS | 0 | 2/04 |



ICF Finish System

Parapet Termination

NOTE:

1. DRYVIT RECOMMENDS THAT GROUND FLOOR APPLICATIONS AND ALL FACADES EXPOSED TO ABNORMAL STRESS, HIGH TRAFFIC, OR DELIBERATE IMPACT HAVE THE BASE COAT REINFORCED WITH PANZER[®] MESH PRIOR TO STANDARD[™] OR STANDARD PLUS[™] MESH. LOCATION OF HIGH IMPACT ZONES SHOULD BE INDICATED ON CONTRACT DOCUMENTS

The architecture, engineering and design of the project using the Dryvit products is the responsibility of the project's design professional. All systems must comply with local building codes and standards. This detail is for general information and guidance only and Dryvit specifically disclaims any liability for the use of this detail and for the architecture, design, engineering or workmanship of any project. The project design professional determines, in its sole discretion, whether this detail or a functionally equivalent alternative is best suited for the project. Use of a functionally equivalent detail does not violate Dryvit's warranty. This detail is subject to change without notice. Contact Dryvit to insure you have the most recent version.



| APPROVED BY: | REV: | DATE: |
|--------------|------|-------|
| RS | 0 | 2/04 |