

St. Rose Hospital  
Las Vegas, NV



Belmont University  
Nashville, TN



# THIS IS WHAT YOU SEE.

Streets of Woodfield  
Schaumburg, IL



Holiday Inn  
Minneapolis, MN



dryvit® 

An RPM Company

DS 261

# THIS IS WHAT YOU GET.

- **Faster, less costly construction**
- **Lower energy bills**
- **Less environmental impact**
- **Lifetime warranty potential**

## Dryvit Outsulation® Systems

### The High Performance Cladding Choice

Dryvit Outsulation Systems are the ideal exterior cladding choice for all types of construction, providing peace of mind for all involved in the design, construction, and maintenance of buildings in the 21st century. Outsulation Systems are cost effective and design flexible with a greater environmental benefit than other claddings. With the unique DryvitCARE program,

Outsulation Systems are easily maintained, can be restored to a new finish look, and are used extensively to renovate numerous other claddings.

Whatever the requirement — Dryvit offers a long term, cost effective solution that will help maintain and increase property value.

# What are Dryvit Outsulation Systems?

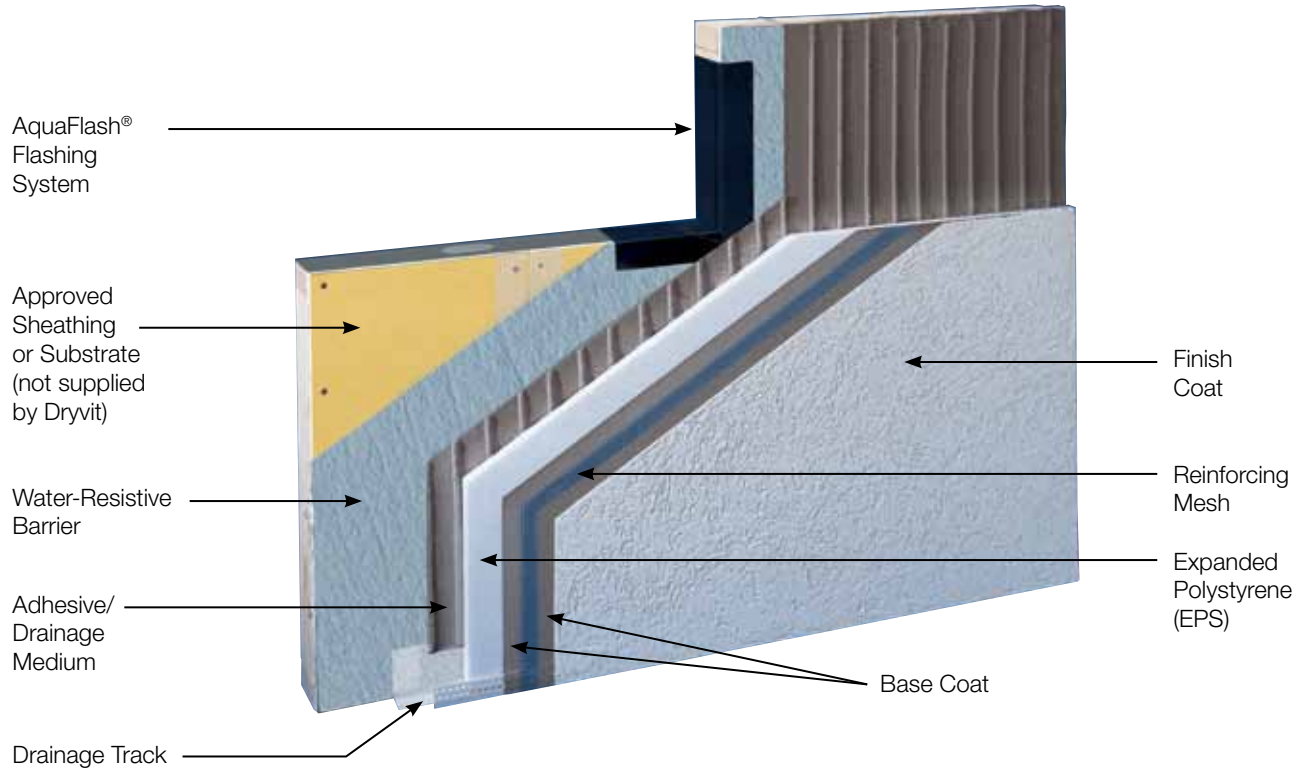
Dryvit Outsulation Systems are engineered, rigorously tested, Code compliant, exterior claddings that provide beauty and protection for the vertical wall surfaces of the building envelope. Most importantly, and as the name suggests, they are highly energy efficient and place insulation on the outside of the wall, where building scientists say it is most effective. Literally, the Systems function as a vapor permeable blanket for the building.

Dryvit Outsulation Systems can be installed in either 'barrier' or 'moisture drainage' configurations, depending upon project specifications. Both are engineered and tested to perform in all climates on almost all types of commonly-used construction methods.

Since 1969, Dryvit Outsulation Systems have been installed on over 400,000 projects in North America – over 2 billion square feet! Put another way, if this square footage was a single wall, stretched across the US from New York to San Francisco, the wall would be over 150 feet high!



# Outsulation Plus MD System®



# Description and Function of System Components

## **AquaFlash® Flashing System**

- Liquid-applied coating and mesh
- Seamless protection of wall openings
- Superior to “peel and stick” membranes

## **Backstop NT® Water Resistive Barrier**

- Protects substrate/sheathing
- Meets Code requirements for air and moisture barrier
- Superior, seamless alternative to sheet barriers

## **Adhesive/Drainage Medium**

- Adheres EPS to water resistive barrier
- Vertical notch configuration provides drainage for incidental moisture

## **Expanded Polystyrene (EPS)**

- Provides insulation (4" = R16)
- Eliminates thermal bridging in frame construction
- Accommodates anticipated structural movement
- Adhesive/mechanical attachment exceeds all Code wind load requirements

## **Base Coat and Reinforcing Mesh**

- Combine to provide impact resistance and primary weather barrier
- Panzer® Mesh option increases impact resistance by 1000%

## **Finish Coat**

- Blend of acrylic copolymers, natural aggregates and highly UV resistant pigments with proven dirt pickup and mildew resistance
- Available in variety of textures and styles
- Color options virtually endless



**OUTSULATION®**  
**SYSTEMS**

# DryvitCARE... Ideal for Restoration



## **Restoration (rēs'ta-rā'shen) – DryvitCARE for Outsulation Systems or other EIFS**

An added feature of Outsulation Systems is the ease with which they can be routinely maintained or restored. The DryvitCARE program prescribes what can be done in either case to renew the original Dryvit system warranty, or even rebrand an existing building with a completely new look – with little or no waste and disposal costs. With DryvitCARE, a Dryvit Outsulation system can realistically perform as intended for the lifetime of your building!

This 17-year old office building was restored and given a modern look. The Outsulation System warranty was renewed.



**Perry Corporation**  
Lima, OH

# ... or Renovation

## **Renovation (rĕn'ō-vā'shen) – DryvitCARE for other claddings**

All types of cladding require periodic maintenance, which can be costly. In addition, many older buildings were poorly insulated when they were constructed. When the time comes to renovate an old brick or stucco building, that can be the perfect time to consider doing so with a Dryvit Outsulation System – which upgrades not only the appearance, but adds valuable insulation at the same time. The original design of the project can be maintained or changed at the owner's discretion.

This luxury car dealer turned a dilapidated brick building into a sparkling new showroom by installing a Dryvit Outsulation System with Custom Brick™ finish – with minimal waste and disposal costs.



**Isringhausen Car Dealership  
Springfield, IL**



# A System Subjected to Rigorous Testing

Dryvit Outsulation Systems have been exhaustively tested. As the industry pioneer and acknowledged market leader in North America, Dryvit has always considered stringent testing as a key component to both safety and quality assurance. Dryvit Outsulation Systems have been tested to levels well beyond those required by model Codes, in both accredited third party laboratories as well as our own R + D facilities.

---

## Categories of Testing Performed on Outsulation Systems:

---

- **Air/Water-Resistive Barrier**
  - **Durability**
  - **Wind Load**
  - **Fire Performance**
-



# Sample Testing Results

TEST	TEST METHOD	CRITERIA	RESULTS
Air Leakage	ASTM E 283	No Criteria	0.6 l/min/m2 (0.002 cfm/ft2)
Water Penetration ICC ES (AC 212)	ASTM E 331	No water penetration beyond the inner-most plane of the wall after 15 minutes at 137 Pa (2.86 psf) for drainage systems and after 2 hours at 300 Pa (6.24 psf) for barrier systems	Passed
Drainage Efficiency ICC ES (AC 235)	ASTM E 2273	Minimum Drainage Efficiency of 90%	Passed
Accelerated Weathering	ASTM G 155 Cycle 1 ASTM G 154 Cycle 1 (QUV)	No deleterious effects after 2000 hours	No deleterious effects after 5000 hours No deleterious effects after 5000 hours
Freeze-Thaw (formerly EIMA 101.01)	ASTM E 2485	No deleterious effects after 60 cycles	Passed - No deleterious effects after 90 cycles
Impact Resistance (formerly EIMA Std. 101.86)	ASTM E2486	No fracture of reinforcing mesh	Meets all requirements in each mesh category
Transverse Wind Load	ASTM E 330	Withstand positive and negative wind loads as specified by the building code	Minimum 4.3 kPa (90 psf)* 16 inch o.c. framing, .5 in. sheathing screw attached at 203 mm (8 inch) o.c.
Fire Resistance	ASTM E 119 NFPA 268	No effect on the fire resistance of a rated wall assembly	Passed 1 hour
Intermediate Multi-Story Fire Test	NFPA 285 (UBC 26-9)	<ol style="list-style-type: none"> <li>1. Resist flame propagation over the exterior surface</li> <li>2. Resist vertical spread of flame within combustible core/component of panel from one story to the next</li> <li>3. Resist vertical spread of flame over the interior surface from one story to the next</li> <li>4. Resist lateral spread of flame from the compartment of fire origin to adjacent spaces</li> </ol>	Passed
Full Scale Multi-Story <sup>1</sup> (corner test)	ANSI FM 4880	Resist flame propagation over the exterior surface	Passed; No height restrictions for Outsulation and Outsulation Plus MD

<sup>1</sup> Dryvit FM Products must be specified.

For full results, go to [www.dryvit.com](http://www.dryvit.com)

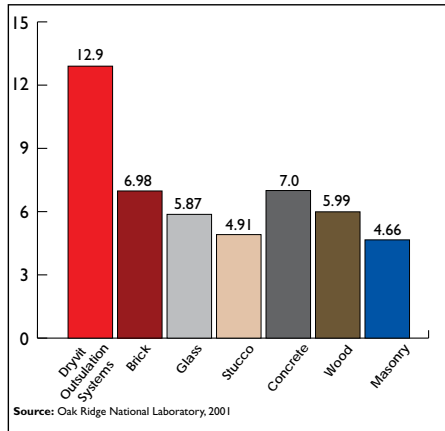
# Dryvit Outsulation Systems – As Green as it Gets

The US Department of Energy's Oak Ridge National Laboratory evaluated Outsulation Systems in a whole wall R-value study. The results indicate that Dryvit Systems are 84% more energy efficient, which can translate into a 20 – 30% annual energy savings.

The National Institute of Standards and Technology (NIST) conducted a 50-year Life Cycle Analysis of Dryvit's Outsulation Systems. A carbon footprint comparison to other claddings is shown below.

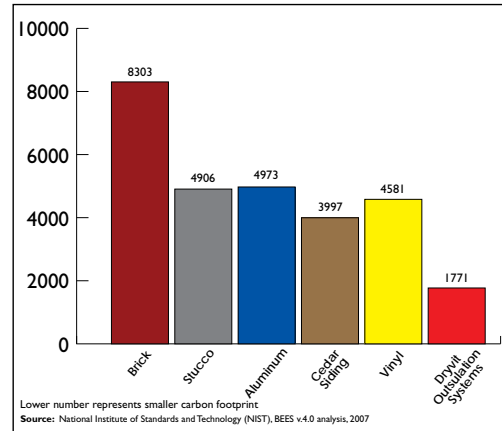
In both evaluations – conducted by prestigious, third party laboratories – the Dryvit Outsulation Systems proved “greenest” when compared to other tested claddings.

## Whole Wall R-Value Comparison



## Carbon Footprint – All 5 stages of Life-Cycle

Grams of CO<sub>2</sub>/Unit



*Tiny Footprint*  *Huge Benefit*

# What it all means – Building GREEN can actually cost less!

## Most people think building “green” has to cost more.

Using a Dryvit Outsulation System can require less concrete and structural steel, smaller HVAC equipment, and less time needed for overall construction\*

Combine this savings in initial cost with the energy savings accumulated over the lifetime of the building and a smaller environmental footprint, and you have a cladding system that is truly GREEN, and truly economical for the lifetime of your building.

For more information on Dryvit Outsulation Systems, call 1-800-556-7752 or visit us on the web at [www.dryvit.com](http://www.dryvit.com).



\*go to [http://www.dryvit.com/case\\_study\\_project.pdf](http://www.dryvit.com/case_study_project.pdf) to read the entire story.



Douglas County Jail  
Lawrence, KS



Royal Palm Office Building  
Plantation, FL



Bellagio Hotel  
Las Vegas, NV



San Marcos Mall  
San Marcos, TX



**OUTSULATION®**  
SYSTEMS

**Dryvit Systems, Inc.**

One Energy Way  
West Warwick, RI 02893  
800-556-7752 401-822-4100

[www.dryvit.com](http://www.dryvit.com)

© Dryvit Systems, Inc., 2011

Printed in U.S.A. 10-11-5M R2:9-19-11



Information contained in this brochure conforms to the standard detail recommendations and specifications for the installation of Dryvit Systems, Inc. products as of the date of the publication of this document and is presented in good faith. Dryvit Systems, Inc. assumes no liability, expressed or implied, as to the architecture, engineering or workmanship of any project. To ensure that you are using the latest, most complete information, contact Dryvit Systems, Inc.



**Tiny Footprint**  **Huge Benefit**