

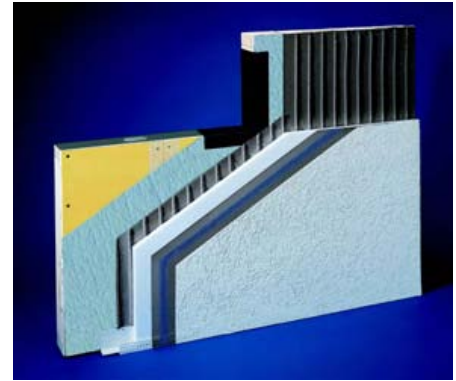
# Outsulation® Plus MD System®

DS445

## The High-Performance Moisture Drainage System That Incorporates An Air and Water-Resistive Barrier

### Summary

Dryvit offers a family of performance-based systems that allows architects and owners to meet the specific demands of any given project. Dryvit's original Outsulation System has been installed on over 400,000 buildings worldwide. Today, due to the increased demands for a wall system to be able to drain away incidental moisture, the Outsulation concept has grown into a family of related systems, each building upon the other to achieve specific performance goals.



### System Components

1. Backstop® NT Air/Water-Resistive Barrier Coating (available in Texture or Smooth)
2. Dryvit Grid Tape™
3. Dryvit AquaFlash® System or Flashing Tape™ and Surface Conditioner™
4. Dryvit Drainage Track™ (Shown) or Dryvit Drainage Strip™ adhered with Dryvit AP Adhesive®
5. Dryvit Adhesive in vertical notched trowel configuration
6. Insulation Board
7. Dryvit Reinforced Base Coat
8. Dryvit Finish

### Efficient and Economical

Outsulation Plus MD expands upon the proven weatherability and insulating qualities of Outsulation by adding a second line of defense against air, moisture and weather. This is accomplished with a coating of Backstop NT and by applying Dryvit's AquaFlash System or flashing tape at all sills of openings. Outsulation Plus MD goes one step further through the use of adhesive channels to provide moisture drainage. These channels work in tandem with either of two system termination options, resulting in an efficient and economical system that is easy to install.

### Why Backstop NT?

The adhesive channels present in Outsulation Plus MD will evacuate incidental moisture that may find its way behind the insulation board. Backstop NT prevents this moisture from coming into contact with the substrate as it drains. Developed specifically for this purpose, it is a specially formulated, flexible, polymer-based, noncementitious coating that provides a watertight membrane. Always used in conjunction with a waterproof flashing material such as Dryvit AquaFlash System or flashing tape, Backstop NT is an essential element of the Outsulation Plus MD System. Full details regarding the performance of Backstop NT are available upon request.

### Dryvit...Proven For Over 35 Years

Dryvit Systems, Inc. is an ISO 9001:2000 and ISO 14000 certified company. ISO standards have been established worldwide as a common denominator for product excellence. Dryvit is the recognized leader in construction technology. With leadership comes an obligation and commitment to research and development. The Outsulation Plus MD System is an example of our determination to continuously evaluate market demands and develop new and exciting products.

### Warranty

Dryvit Systems, Inc. shall provide a written moisture drainage and limited materials warranty against defective material upon written request. Dryvit shall make no other warranties, expressed or implied. Dryvit does not warrant workmanship. Full details are available from Dryvit Systems, Inc.

Dryvit Systems, Inc.  
P. O. Box 1013  
One Energy Way  
W. Warwick, RI 02893  
(800) 556-7752  
www.dryvit.com

Printed in USA R6:03-07-08  
©Dryvit Systems, Inc. 1998

Information contained in this product sheet conforms to the standard detail recommendations and specifications for the installation of Dryvit Systems, Inc. products as of the date of publication of this document and is presented in good faith. Dryvit Systems, Inc. assumes no liability, expressed or implied, as to the architecture, engineering or workmanship of any project. To ensure that you are using the latest, most complete information, contact Dryvit Systems, Inc.

**dryvit**®  
An RPM Company