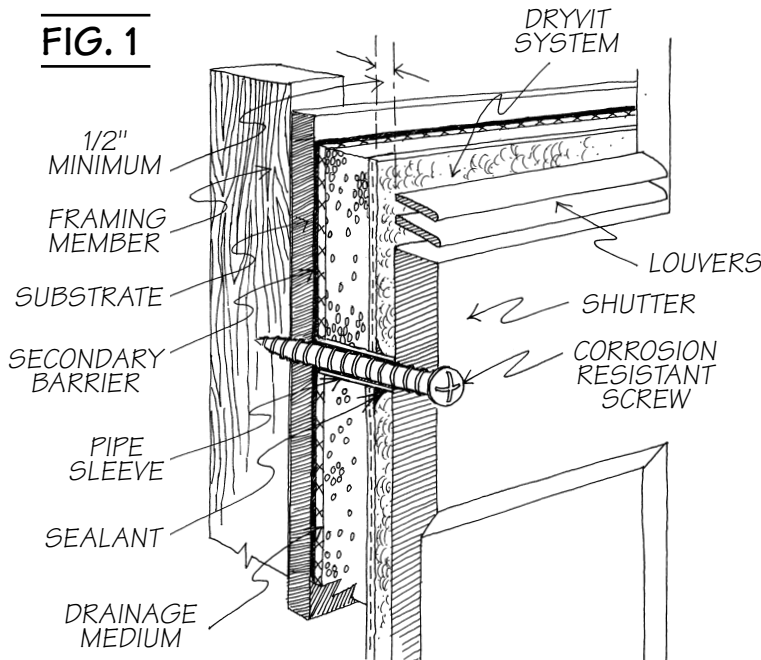


Details Are The Key To Success

ATTACHMENT OF SHUTTERS AND DOWNSPOUTS

FIG. 1



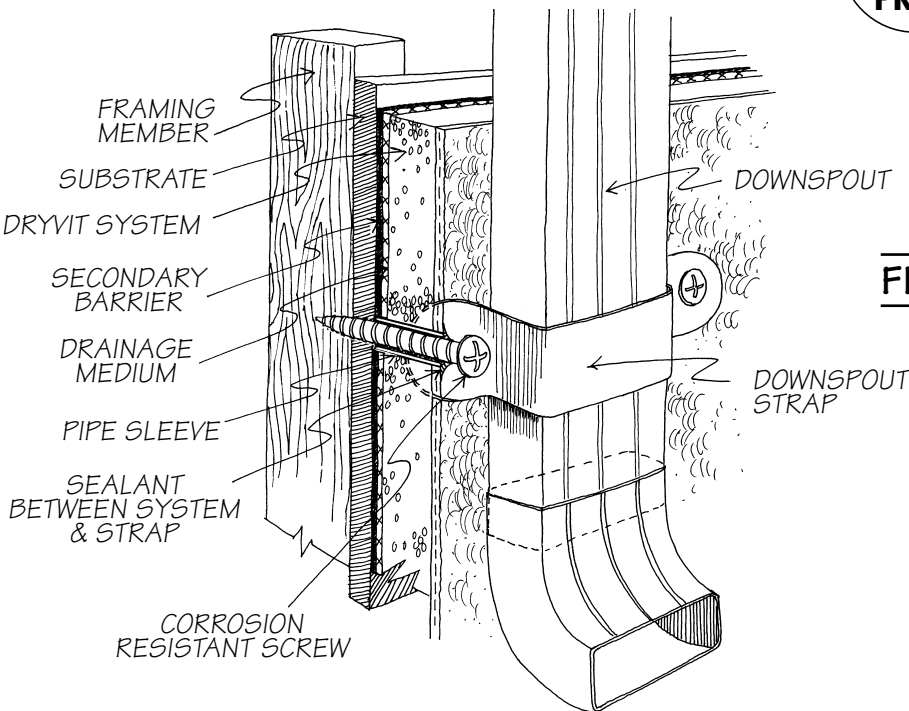
Wherever the system is penetrated for hanging various attachments such as shutters, downspouts, fixtures, etc., always insert proper-sized pipe sleeves first. Then insert the nails or screws through them and seal sleeve openings with sealant.

Fig. 1) Insert sleeve so that it holds shutter 1/2" from face of system. Caulk between sleeve and system. Fill sleeve with sealant prior to inserting screw.

Fig. 2) Install sleeve flush with face of system. Apply sealant around and inside the sleeve prior to inserting nail or screw.



FIG. 2



SUCCESSFUL BUILDERS SHARE THEIR KNOWLEDGE

All good builders know how important it is to pay attention to details. In this series, Dryvit focuses on key details that successful builders follow when installing exterior insulation and finish systems. Use these drawings, along with Dryvit's complete system specifications and details, as a helpful guide for you and your subcontractors in planning and coordinating the critical interfaces between exterior building components.

DRYVIT'S TECHNICAL SUPPORT IS TOPS

Throughout North America, we have a field service staff to assist with technical issues. Our corporate engineering staff is prepared to review your Dryvit plans, make suggestions and support your efforts. Total customer satisfaction is our goal. Use our 800 number and benefit from the Dryvit Difference.

MAKE SURE IT'S A DRYVIT SYSTEM

We are the Number One EIFS manufacturer. We offer a number of exterior wall systems including Residential MD® and Sprint MD® Systems. You are off to a great start when you select a Dryvit system.

This detail is for general information and guidance only, and Dryvit disclaims any liability for the use of this detail and for the architecture, design, engineering or workmanship of any project.

For additional information, call 1-800-4-DRYVIT or visit www.dryvit.com

©Dryvit Systems, Inc. 1997



An RPM Company