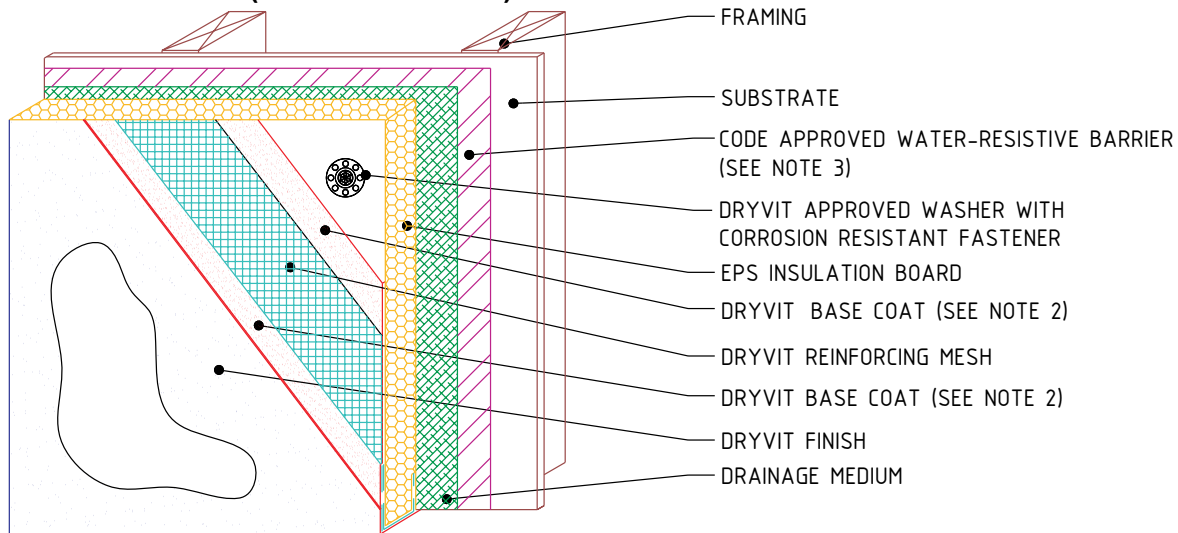
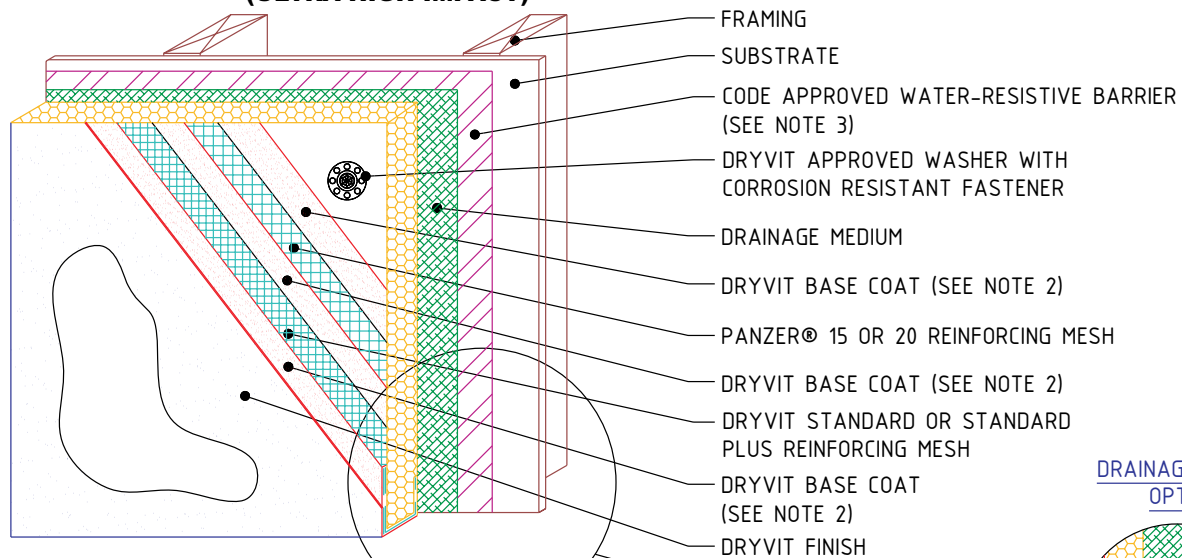


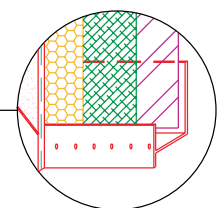
EIMA CLASS I (STANDARD IMPACT)



EIMA CLASS IV (ULTRA-HIGH IMPACT)



DRAINAGE TRACK OPTION



Outsulation® RMD System™

Dryvit Drainage Mat Option

NOTE:

1. DRYVIT RECOMMENDS THAT GROUND FLOOR APPLICATIONS AND ALL FACADES EXPOSED TO ABNORMAL STRESS, HIGH TRAFFIC, OR DELIBERATE IMPACT HAVE THE BASE COAT REINFORCED WITH PANZER® MESH PRIOR TO STANDARD MESH™ OR STANDARD PLUS MESH™. LOCATION OF HIGH IMPACT ZONES SHOULD BE INDICATED ON CONTRACT DRAWINGS.
2. DRYVIT GENESIS® OR GENESIS DM SHALL BE USED AS THE BASE COAT WHEN INSTALLING SYSTEMS WITH MECHANICAL FASTENERS.
3. THE SELECTION OF A SPECIFIC WATER-RESISTIVE BARRIER IS THE RESPONSIBILITY OF THE SPECIFIER AND IS OUTSIDE THE SCOPE OF THIS DOCUMENT.

The architecture, engineering and design of the project using the Dryvit products is the responsibility of the project's design professional. All systems must comply with local building codes and standards. This detail is for general information and guidance only and Dryvit specifically disclaims any liability for the use of this detail and for the architecture, design, engineering or workmanship of any project. The project design professional determines, in its sole discretion, whether this detail or a functionally equivalent alternative is best suited for the project. Use of a functionally equivalent detail does not violate Dryvit's warranty. This detail is subject to change without notice. Contact Dryvit to insure you have the most recent version.

APPROVED BY:	REV:	DATE:
RS	6	02/08

