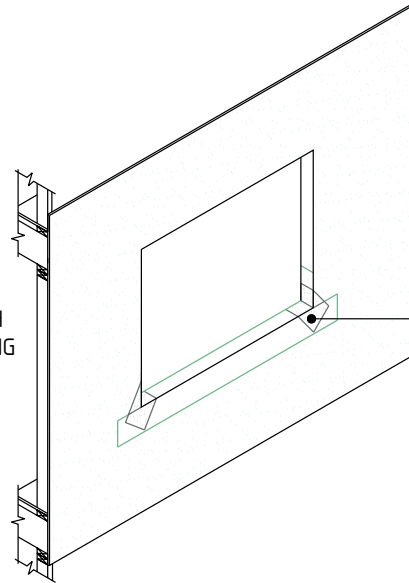


STEP #1

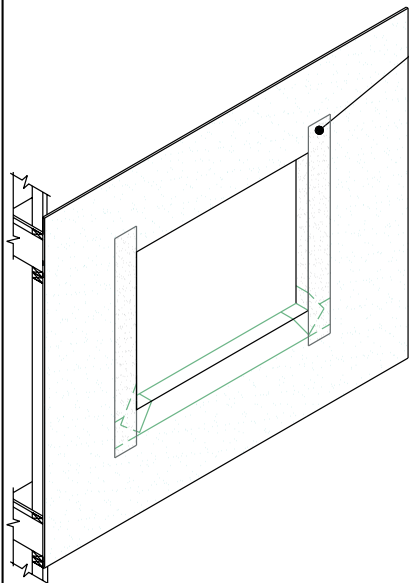
APPLY DRYVIT AQUAFLASH SYSTEM AT SILL, EXTENDING UP JAMBS MINIMUM 2 1/2" (SEE NOTE 1)

DRYVIT WATER-RESISTIVE BARRIER COATING



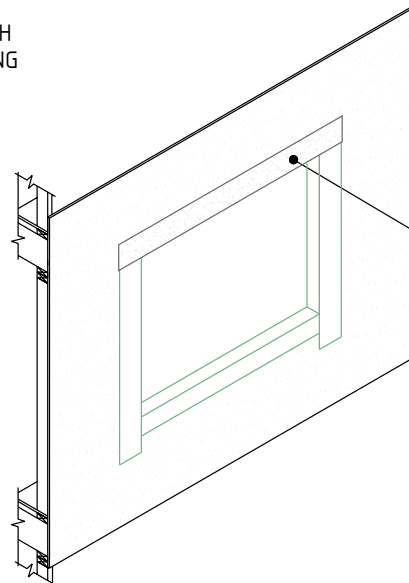
STEP #2

INSTALL DIAGONAL STRIP OF DRYVIT AQUAFLASH SYSTEM AT CORNERS



STEP #3

APPLY DRYVIT AQUAFLASH SYSTEM AT JAMBS LAPPING OVER SILL APPLICATION (SEE NOTE 1)



STEP #4

APPLY DRYVIT AQUAFLASH SYSTEM AT HEAD LAPPING OVER JAMB APPLICATION (SEE NOTE 1)

Outsulation® RMD System™

Opening Prep - Backstop® NT WRB/ Aquaflash® System Option

NOTE:

1. DRYVIT OPENING WRAP SHALL EXTEND TO INTERIOR FACE OF FRAMING.

The architecture, engineering and design of the project using the Dryvit products is the responsibility of the project's design professional. All systems must comply with local building codes and standards. This detail is for general information and guidance only and Dryvit specifically disclaims any liability for the use of this detail and for the architecture, design, engineering or workmanship of any project. The project design professional determines, in its sole discretion, whether this detail or a functionally equivalent alternative is best suited for the project. Use of a functionally equivalent detail does not violate Dryvit's warranty. This detail is subject to change without notice. Contact Dryvit to insure you have the most recent version.

APPROVED BY:	REV:	DATE:
RS	2	02/08

