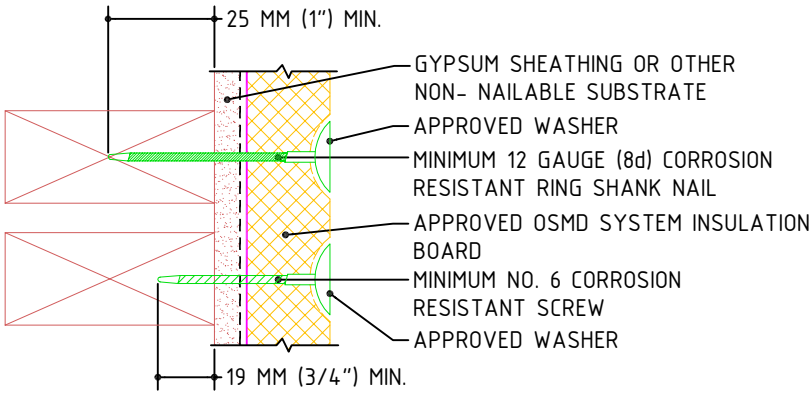
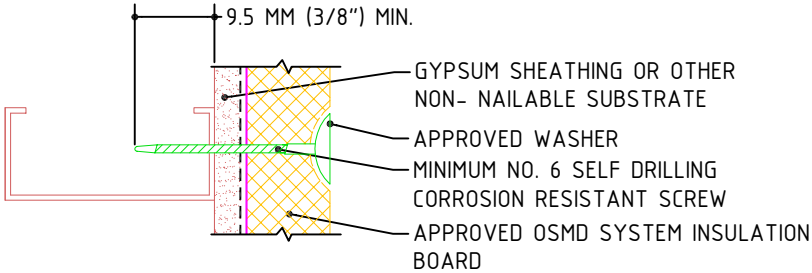


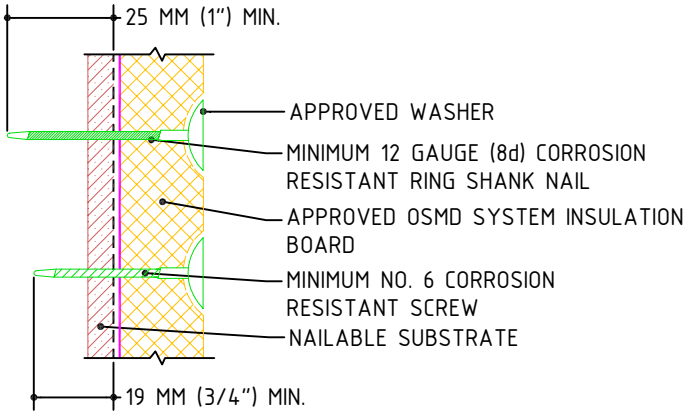
**NON-NAILABLE
SUBSTRATE
WOOD FRAMING**



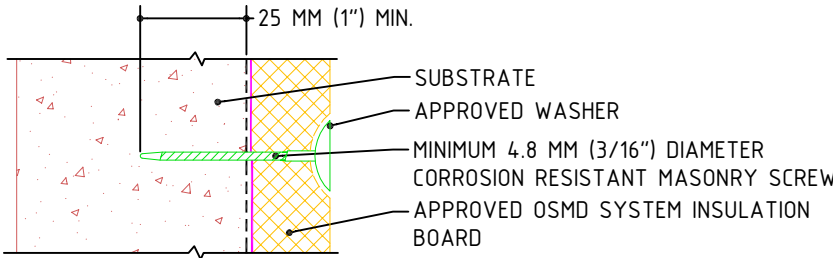
**NON-NAILABLE
SUBSTRATE
STEEL FRAMING**



**NAILABLE
SUBSTRATE**



CONCRETE



Outsulation[®] SMD System[™]

Fastening

NOTE:
1. FOR NON-NAILABLE SHEATHING SUBSTRATES, THE FASTENER MUST BE INSTALLED INTO THE FRAMING.

The architecture, engineering and design of the project using the Dryvit products is the responsibility of the project's design professional. All systems must comply with local building codes and standards. This detail is for general information and guidance only and Dryvit specifically disclaims any liability for the use of this detail and for the architecture, design, engineering or workmanship of any project. The project design professional determines, in its sole discretion, whether this detail or a functionally equivalent alternative is best suited for the project. Use of a functionally equivalent detail does not violate Dryvit's warranty. This detail is subject to change without notice. Contact Dryvit to insure you have the most recent version.

APPROVED BY:	REV:	DATE:
RS	4	02/09

