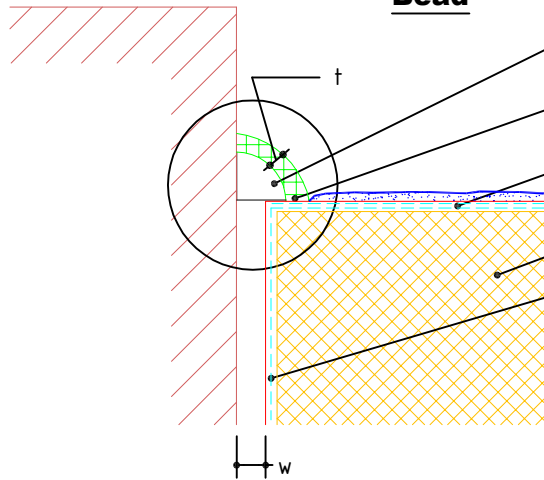
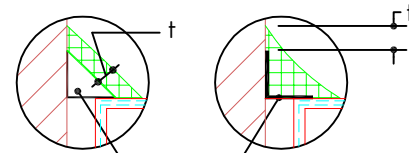


Angle Bead



- DRYVIT COMPATIBLE SEALANT WITH QUARTER ROUND BACKER ROD, BY OTHERS (REFER TO BOND BREAKER OPTIONS BELOW)
- DRYVIT DEMANDIT® OR COLOR PRIME™ ON SURFACE(S) TO RECEIVE SEALANT
- DRYVIT REINFORCING MESH EMBEDDED IN DRYVIT GENESIS®, GENESIS DM OR GENESIS DMS BASE COAT
- APPROVED OSMD SYSTEM INSULATION BOARD
- WRAP DRYVIT DETAIL MESH® 51 MM (2") MIN. AT BACKSIDE OF INSULATION BOARD

Angle Bead Bond Breaker Options



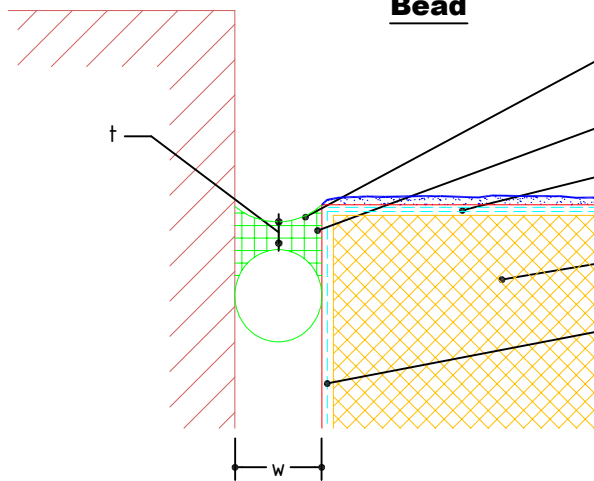
TRIANGULAR BACKER ROD

BOND BREAKER TAPE

FOR ANGLE BEADS:

- t = 6.4 mm (1/4") min.
- w = specified by manufacturer of abutting material but not less than 3.2 mm (1/8")

Rectangular Bead



- DRYVIT COMPATIBLE SEALANT WITH CLOSED CELL BACKER ROD, BY OTHERS
- DRYVIT DEMANDIT OR COLOR PRIME ON SURFACE(S) TO RECEIVE SEALANT
- DRYVIT REINFORCING MESH EMBEDDED IN DRYVIT GENESIS, GENESIS DM OR GENESIS DMS BASE COAT
- APPROVED OSMD SYSTEM INSULATION BOARD
- WRAP DRYVIT DETAIL MESH 51 MM (2") MIN. AT BACKSIDE OF INSULATION BOARD

FOR RECTANGULAR BEADS:

- w = 12.7 mm (1/2") min. (SEE NOTES 1 AND 2)
- t = 6.4 mm (1/4") min.
- w/t = 2:1

Outsulation® SMD System™

Sealant Configuration Options

NOTE:

1. WEATHER SEAL JOINTS SUCH AS AT WINDOW AND DOOR PERIMETERS CAN USE ANGLE OR RECTANGULAR BEADS. RECTANGULAR BEADS USED AS A WEATHERSEAL REQUIRE A MINIMUM 12.7 MM (1/2") WIDTH.
2. EXPANSION JOINTS SHALL USE RECTANGULAR BEADS AND BE DESIGNED FOR MINIMUM FOUR TIMES THE ANTICIPATED MOVEMENT, BUT NOT LESS THAN 19 MM (3/4").

The architecture, engineering and design of the project using the Dryvit products is the responsibility of the project's design professional. All systems must comply with local building codes and standards. This detail is for general information and guidance only and Dryvit specifically disclaims any liability for the use of this detail and for the architecture, design, engineering or workmanship of any project. The project design professional determines, in its sole discretion, whether this detail or a functionally equivalent alternative is best suited for the project. Use of a functionally equivalent detail does not violate Dryvit's warranty. This detail is subject to change without notice. Contact Dryvit to insure you have the most recent version.

APPROVED BY:	REV:	DATE:
RS	4	02/09

