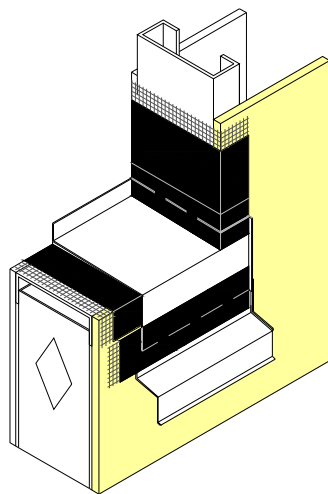


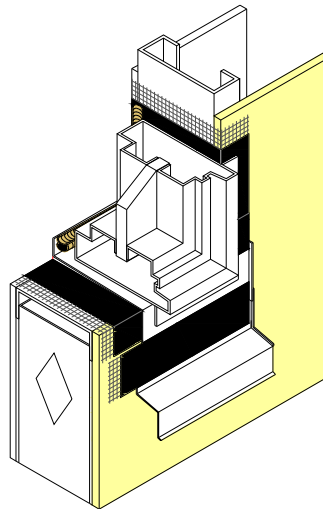
(SEE NOTES 1,2 AND 5)

STEP 1: APPLY DRYVIT AQUAFLASH® SYSTEM AT SILL PER OS 0.0.02 AND SECURE FLASHING TO FRAMING (SEE NOTES 1,2,5 AND 7)

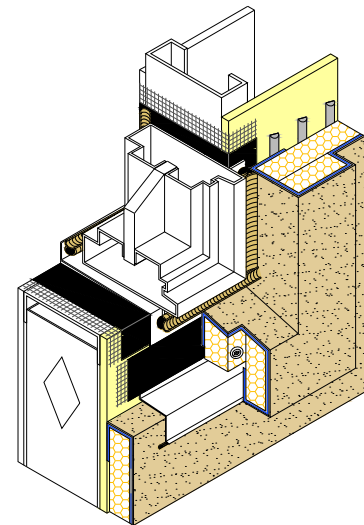
STEP 2: INSTALL SILL PAN FLASHING. SHIM UNDERSIDE OF PAN FLASHING TO ENSURE WATER RUN OFF (SEE NOTE 2)



STEP 3: APPLY DRYVIT AQUAFLASH SYSTEM OVER METAL FLASHING TRANSITION AND AT JAMBS LAPPING OVER UPTURNED LEGS OF PAN FLASHING (SEE NOTES 1,2,5 AND 7)



STEP 4: INSTALL WINDOW UNIT AND ASSOCIATED HEAD FLASHING.



STEP 5: INSTALL EIFS AND APPLY BACKER ROD AND SEALANT ALONG JAMBS AND AT SYSTEM TERMINATIONS, ALSO ALONG EDGES OF FLASHING (SEE NOTES 3,4,5 AND 6)

Outsulation[®] System

Preparation of Opening for Nail-On Window

NOTE:

1. PAN FLASHING SHOULD OVERLAP EIFS MIN. 2 1/2" (64 MM) MEASURED FROM THE TOP OF THE EPS.

2. PAN FLASHING MUST HAVE WATERTIGHT SEAMS.

3. DRYVIT FLASHING TAPE SURFACE CONDITIONER™ AND DRYVIT FLASHING TAPE™ MAY BE USED IN LIEU OF AQUAFLASH SYSTEM.

4. EIFS AT SILL SHALL BE SLOPED FOR DRAINAGE.

5. APPLY DRYVIT AQUAFLASH SYSTEM AT SILL. SEE DETAIL OS 0.0.02

6. ADHESIVE ONLY APPLICATION IS ACCEPTABLE WHEN USING THE AQUAFLASH SYSTEM.

7. DRYVIT FLASHING TAPE SURFACE CONDITIONER AND DRYVIT FLASHING TAPE MAY BE USED IN LIEU OF AQUAFLASH SYSTEM.

The architecture, engineering, and design of the project using the Dryvit products is the responsibility of the project's design professional. All systems must comply with local building codes and standards. This detail is for general information and guidance only and Dryvit specifically disclaims any liability for the use of this detail and for the architecture, design, engineering or workmanship of any project. The project design professional determines, in its sole discretion, whether this detail or a functionally equivalent detail is best suited for the project. Use of a functionally equivalent detail does not violate Dryvit's warranty. This detail is subject to change without notice. Contact Dryvit to ensure you have the most recent version.

