



OUTSULATION SYSTEMS

The High Value, Green Building Commercial Cladding Solution

Looking for high value, durable and environmentally responsible cladding options for your next commercial project? Look no farther than the Dryvit Outsulation® family of systems, with more than 40 years of providing quality solutions to the North American commercial marketplace. Proven, demonstrably green and extraordinarily design flexible, the Outsulation family of cladding systems provide the following benefits:

Save 10% on shell construction cost

The lightweight Outsulation system is a fraction of the weight of brick or stucco, meaning you can build with less costly structural framing.

Save 20-30% on building operation cost

Because Outsulation systems are so energy efficient you will save up to 30% annually on the heating and cooling costs for your building.

Superior energy efficiency

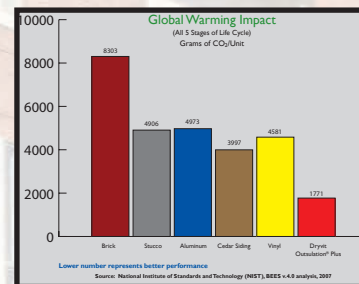
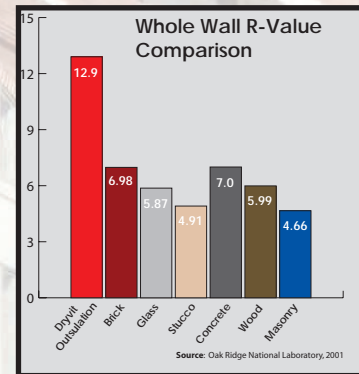
The Oak Ridge National Laboratory found that Dryvit Outsulation systems are 84% more energy efficient than the next-best cladding.

Smaller Carbon Footprint than brick and stucco - Be Green!

The National Institute of Standards and Technology found that Dryvit Outsulation systems produce a smaller carbon footprint than other tested cladding.

Extraordinary design flexibility

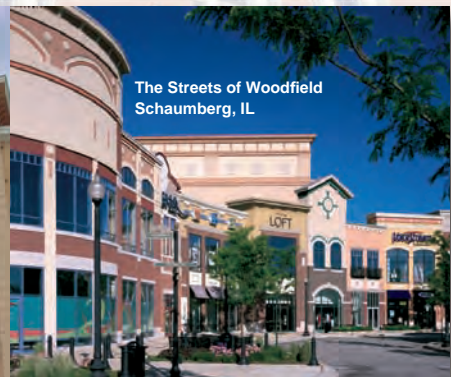
Architectural finishes such as brick, limestone, granite, metal panels - among many others - afford the opportunity to meet any design need. Architectural shapes can easily be added for even greater results.



St. Rose Hospital
Las Vegas, NV



Shingle Creek Resort
Shingle Creek, FL



The Streets of Woodfield
Schaumburg, IL

www.dryvit.com
www.dryvitisgreen.com
www.dryvitcare.com



An RPM Company