



An RPM Company



VS

**DRYVIT
OUTSULATION SYSTEMS**

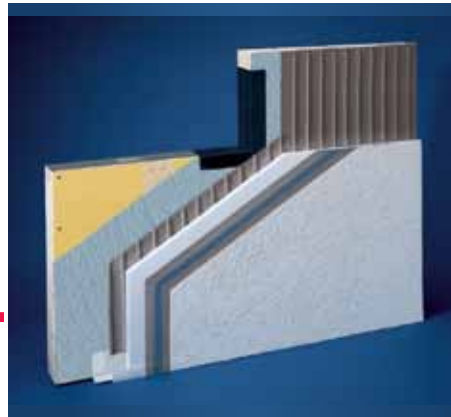
BRICK

ATTRIBUTES	DRYVIT OUTSULATION SYSTEMS	BRICK
Construction Method	Field Applied or Pre-Fabricated	Field Applied or Pre-Fabricated
Product Lead Times	Short	Medium
Construction Coordination	Simple	Challenging
Single Source Wall Assembly Warranty	Yes	No
Shop Drawings	Pre-Fabricated Only	Pre-Fabricated Only
Wall Attachment	Adhered - No Penetrations	Supported - Anchor Penetrations
Repairability	Easily Coordinated	Challenging
Life Expectancy	Design Life of the Building	Design Life of the Building
Weight - lbs /sq ft	1.0 - 2.0 lbs / sq ft	40 - 50 lbs / sq ft
Wall Height Limitation	No	Limited by Capacity of Building Structure
ENERGY CODE COMPLIANCE		
Integrated Continuous Insulation (CI)	Yes	No
Integrated Air Barrier*	Yes	No
Material Air Leakage*	Yes	Yes
Assembly Air Leakage*	Yes	No
Thermal Bridging	No Thermal Breaks	Thermal Bridging at Anchors
R-value Contribution	Yes	No
ARCHITECTURAL DIVERSITY		
Freedom for Architectural Style	Yes	Limited
Various Texture Options	Yes	Limited
Custom Color Program	Yes	Limited
High Performance Colorant Technology	Yes	No
PERFORMANCE TESTED		
Weatherability	Yes	No
Drainage Efficiency Tested	Yes	No
Water Penetration	Yes	No
DURABILITY TESTED		
Impact Resistance	Standard to Ultra-High	High
STRUCTURAL TESTED		
Florida NOA Hurricane Listed	Yes	No
Transverse Wind Load	Yes	No
FIRE TESTED**		
NFPA 285 "Material" Tested	Yes	N/A
NFPA 285 "Wall Assembly" Tested	Yes	No

*For Dryvit systems with secondary air/weather barriers **Applicable where continuous insulation is used For complete system information and testing, visit dryvit.com



An RPM Company



VS

DRYVIT OUTSULATION SYSTEMS

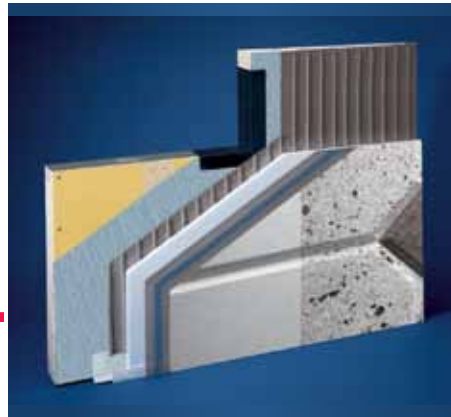
CONVENTIONAL STUCCO

ATTRIBUTES	DRYVIT OUTSULATION SYSTEMS	CONVENTIONAL STUCCO
Construction Method	Field Applied or Pre-Fabricated	Field Applied
Product Lead Times	Short	Quick
Construction Coordination	Simple	Relatively Simple
Single Source Wall Assembly Warranty	Yes	No
Shop Drawings	Pre-Fabricated Only	No
Wall Attachment	Adhered - No Penetrations	Bonded - Lath Fastener Penetrations
Repairability	Easily Coordinated	Easily Coordinated
Life Expectancy	Design Life of the Building	Design Life of the Building
Weight - lbs /sq ft	1.0 - 2.0 lbs / sq ft	8 - 12 lbs / sq ft
Wall Height Limitation	No	No
ENERGY CODE COMPLIANCE		
Integrated Continuous Insulation (CI)	Yes	No
Integrated Air Barrier*	Yes	No
Material Air Leakage*	Yes	No
Assembly Air Leakage*	Yes	No
Thermal Bridging	No Thermal Breaks	Thermal Bridging at Joints and Fasteners
R-value Contribution	Yes	No
ARCHITECTURAL DIVERSITY		
Freedom for Architectural Style	Yes	No
Various Texture Options	Yes	Limited
Custom Color Program	Yes	Limited
High Performance Colorant Technology	Yes	No
PERFORMANCE TESTED		
Weatherability	Yes	No
Drainage Efficiency Tested	Yes	No
Water Penetration	Yes	No
DURABILITY TESTED		
Impact Resistance	Standard to Ultra-High	High
STRUCTURAL TESTED		
Florida NOA Hurricane Listed	Yes	Not Tested / Grandfathered Into Code
Transverse Wind Load	Yes	No
FIRE TESTED**		
NFPA 285 "Material" Tested	Yes	N/A
NFPA 285 "Wall Assembly" Tested	Yes	No

*For Dryvit systems with secondary air/weather barriers **Applicable where continuous insulation is used For complete system information and testing, visit dryvit.com



An RPM Company



VS

DRYVIT OUTSULATION SYSTEMS

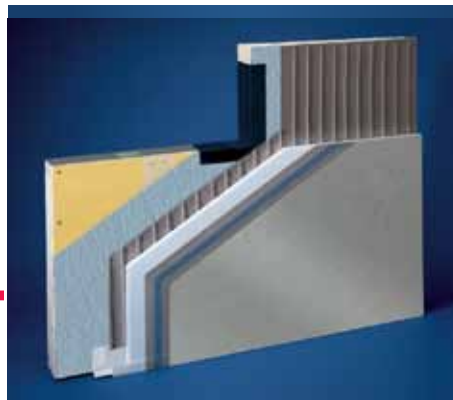
GRANITE AND LIMESTONE

ATTRIBUTES	DRYVIT OUTSULATION SYSTEMS	GRANITE AND LIMESTONE
Construction Method	Field Applied or Pre-Fabricated	Field Applied or Pre-Fabricated
Product Lead Times	Short	Long
Construction Coordination	Simple	Challenging
Single Source Wall Assembly Warranty	Yes	No
Shop Drawings	Pre-Fabricated Only	Yes
Wall Attachment	Adhered - No Penetrations	Supported - Anchor Penetrations
Repairability	Easily Coordinated	Challenging
Life Expectancy	Design Life of the Building	Design Life of the Building
Weight - lbs /sq ft	1.0 - 2.0 lbs / sq ft	40 - 60 lbs / sq ft
Wall Height Limitation	No	Limited by Capacity of Building Structure
ENERGY CODE COMPLIANCE		
Integrated Continuous Insulation (CI)	Yes	No
Integrated Air Barrier*	Yes	No
Material Air Leakage*	Yes	No
Assembly Air Leakage*	Yes	No
Thermal Bridging	No Thermal Breaks	Thermal Bridging at Anchors
R-value Contribution	Yes	No
ARCHITECTURAL DIVERSITY		
Freedom for Architectural Style	Yes	Limited
Various Texture Options	Yes	Limited
Custom Color Program	Yes	No
High Performance Colorant Technology	Yes	No
PERFORMANCE TESTED		
Weatherability	Yes	No
Drainage Efficiency Tested	Yes	No
Water Penetration	Yes	No
DURABILITY TESTED		
Impact Resistance	Standard to Ultra-High	High
STRUCTURAL TESTED		
Florida NOA Hurricane Listed	Yes	No
Transverse Wind Load	Yes	No
FIRE TESTED**		
NFPA 285 "Material" Tested	Yes	N/A
NFPA 285 "Wall Assembly" Tested	Yes	No

*For Dryvit systems with secondary air/weather barriers **Applicable where continuous insulation is used For complete system information and testing, visit dryvit.com



An RPM Company



VS

DRYVIT OUTSULATION SYSTEMS

METAL PANELS

ATTRIBUTES	DRYVIT OUTSULATION SYSTEMS	METAL PANELS
Construction Method	Field Applied or Pre-Fabricated	Pre-Fabricated
Product Lead Times	Short	Long
Construction Coordination	Simple	Challenging
Single Source Wall Assembly Warranty	Yes	No
Shop Drawings	Pre-Fabricated Only	Yes
Wall Attachment	Adhered - No Penetrations	Mechanical - Framing System with Fastener Penetrations
Repairability	Easily Coordinated	Challenging
Life Expectancy	Design Life of the Building	Design Life of the Building
Weight - lbs /sq ft	1.0 - 2.0 lbs / sq ft	1.0 - 2.0 lbs / sq ft
Wall Height Limitation	No	Yes - Product / System / Construction Type Specific
ENERGY CODE COMPLIANCE		
Integrated Continuous Insulation (CI)	Yes	No
Integrated Air Barrier*	Yes	No
Material Air Leakage*	Yes	Yes
Assembly Air Leakage*	Yes	No
Thermal Bridging	No Thermal Breaks	Thermal Bridging at Joints / Edges and Attachments
R-value Contribution	Yes	Yes - Insulated - Does Not Meet Intent of Energy Code for CI
ARCHITECTURAL DIVERSITY		
Freedom for Architectural Style	Yes	No
Various Texture Options	Yes	Limited
Custom Color Program	Yes	Yes
High Performance Colorant Technology	Yes	Yes
PERFORMANCE TESTED		
Weatherability	Yes	Yes
Drainage Efficiency Tested	Yes	No
Water Penetration	Yes	Yes
DURABILITY TESTED		
Impact Resistance	Standard to Ultra-High	Low to High
STRUCTURAL TESTED		
Florida NOA Hurricane Listed	Yes	Yes
Transverse Wind Load	Yes	Yes
FIRE TESTED**		
NFPA 285 "Material" Tested	Yes	Yes - Certain Types / Verify Compliance
NFPA 285 "Wall Assembly" Tested	Yes	Yes - Certain Types / Verify Compliance

*For Dryvit systems with secondary air/weather barriers **Applicable where continuous insulation is used **For complete system information and testing, visit dryvit.com**