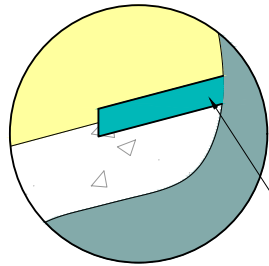


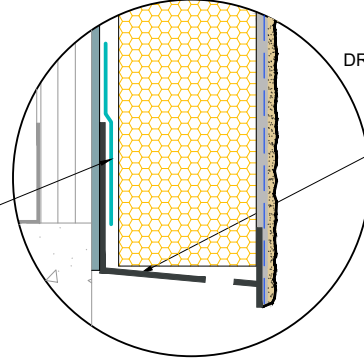
TREMCO DYMONIC 100 OR DRYVIT BACKSTOP® FLASH AND FILL OPTION

TREMCO DYMONIC 100 OR DRYVIT BACKSTOP® FLASH AND FILL DRAINAGE TRACK OPTION

DRAINAGE TRACK OPTION

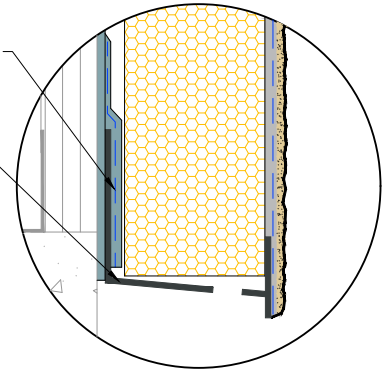


TREMCO DYMONIC 100 OR DRYVIT BACKSTOP® FLASH AND FILL (SEE NOTES 3, 4, 6)



DRYVIT AQUAFLASH SYSTEM OR DRYVIT BACKSTOP NTX - TEXTURE OVER GRID TAPE (SEE NOTES 3, 4, 5, 6)

DRYVIT DRAINAGE TRACK SET IN DRYVIT AP ADHESIVE



NOTE:

1. DRYVIT RECOMMENDS THAT GROUND FLOOR APPLICATIONS AND ALL FACADES EXPOSED TO ABNORMAL STRESS, HIGH TRAFFIC, OR DELIBERATE IMPACT HAVE THE BASE COAT REINFORCED WITH PANZER® MESH PRIOR TO STANDARD OR STANDARD PLUS MESH. LOCATION OF HIGH IMPACT ZONES SHOULD BE INDICATED ON CONTRACT DRAWINGS.

2. ENSURE BOTTOM EDGE OF DRAINAGE STRIP IS LEFT FREE TO DRAIN.

3. LIGHTLY SAND SURFACE OF DRAINAGE TRACK TO MAXIMIZE ADHESION.

4. REFER TO PRODUCT DATA SHEETS FOR SPECIFIC APPLICATION METHODS.

5. DRYVIT DRAINAGE TRACK SHALL ONLY BE USED AT GRADE LEVEL TERMINATIONS.

6. THE ONLY WRB TO BE USED WITH BACKSTOP® FLASH AND FILL IS BACKSTOP® NTX™.

The architecture, engineering, and design of the project using the Dryvit and Tremco products are the responsibility of the project's design professional. All products and systems must comply with local building codes and standards. This detail is for general information and guidance only and Dryvit and Tremco specifically disclaims any liability for the use of this detail. The project design professional determines, in its sole discretion, whether this detail or a functionally equivalent detail is best suited for the project. This detail is subject to change without notice. Contact Dryvit and Tremco to ensure you have the most recent version.

Outsulation® Plus MD System®



Dryvit Technical Support: 800-556-7752

Detail: Termination at Concrete Curb

Drawn by: KAB

Checked by: CB

Scale: NTS

Date: 2/2022

File Name:

OPMD 9



Construction Products Group

www.tremcocpg.com