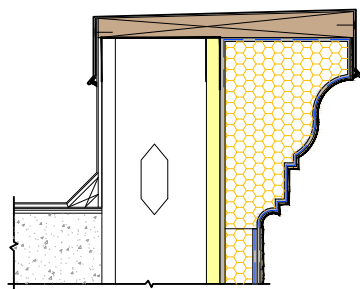


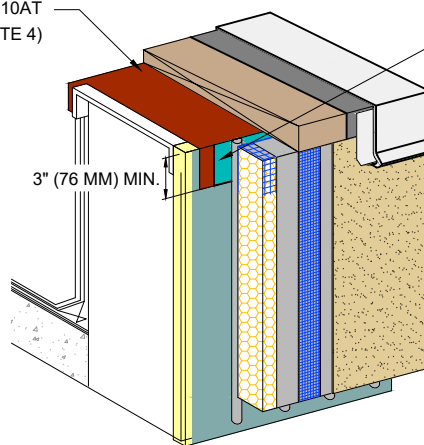
DRYVIT ADHESIVE IN VERTICAL NOTCHED TROWEL CONFIGURATION APPLIED TO BACK OF EPS

TREMCO EXOAIR 110AT (SEE NOTE 4)

TREMCO DYMONIC 100 AT 40 MILS APPLIED OVER EXOAIR 110AT



EPS SHAPE OPTION (SEE NOTE 3)



TREMCO DYMONIC 100/EXOAIR 110AT OPTION

NOTE:

1. DRYVIT RECOMMENDS THAT GROUND FLOOR APPLICATIONS AND ALL FACADES EXPOSED TO ABNORMAL STRESS, HIGH TRAFFIC, OR DELIBERATE IMPACT HAVE THE BASE COAT REINFORCED WITH PANZER® MESH PRIOR TO STANDARD OR STANDARD PLUS MESH. LOCATION OF HIGH IMPACT ZONES SHOULD BE INDICATED ON CONTRACT DRAWINGS.

2. EDGE WRAPPING METHOD IS ACCEPTABLE IN LIEU OF BACK WRAPPING. DRYVIT REINFORCING MESH MUST BE FULLY EMBEDDED IN DRYVIT BASE COAT AT EPS EDGE AND EXTEND ONTO SUBSTRATE 2 1/2" (64 MM) MIN.

3. MAXIMUM THICKNESS OF EPS BUILT OUT SHAPES SHALL NOT EXCEED 13" (330 MM) AT ANY POINT MEASURED FROM THE SUBSTRATE.

4. DYMONIC 100 OR DRYVIT BACKSTOP® FLASH AND FILL MAY BE USED IN LIEU OF EXOAIR 110AT. REFER TO PRODUCT DATA SHEETS FOR SPECIFIC APPLICATION METHODS.

The architecture, engineering, and design of the project using the Dryvit and Tremco products are the responsibility of the project's design professional. All products and systems must comply with local building codes and standards. This detail is for general information and guidance only and Dryvit and Tremco specifically disclaims any liability for the use of this detail. The project design professional determines, in its sole discretion, whether this detail or a functionally equivalent detail is best suited for the project. This detail is subject to change without notice. Contact Dryvit and Tremco to ensure you have the most recent version.

Outsulation® Plus MD System®



Dryvit Technical Support: 800-556-7752

Detail: Termination at Parapet - Cap Flashing

Drawn by: KAB

Checked by: CB

Scale: NTS

Date: 1/2022

File Name:

OPMD 19



Construction Products Group

www.tremcocpg.com