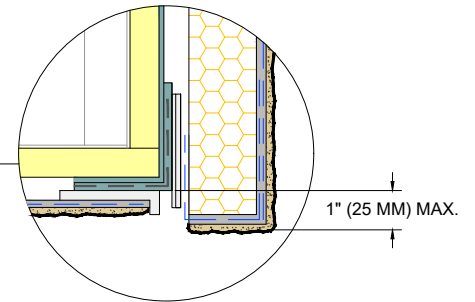


DRYVIT BACKSTOP® NT™-TEXTURE OVER DRYVIT GRID TAPE™, DRYVIT BACKSTOP® FLASH AND FILL, TREMCO EXOAIR 230 WITH TREMCO 2011 MESH OR TREMCO DYMONIC 100 (SEE NOTES 5, 6)

DRYVIT DRAINAGE STRIP™ ADHERED WITH DABS OF DRYVIT AP ADHESIVE (SEE NOTE 4)

CASING BEAD, BY OTHERS



NOTE:

1. DRYVIT RECOMMENDS THAT GROUND FLOOR APPLICATIONS AND ALL FACADES EXPOSED TO ABNORMAL STRESS, HIGH TRAFFIC, OR DELIBERATE IMPACT HAVE THE BASE COAT REINFORCED WITH PANZER® MESH PRIOR TO STANDARD OR STANDARD PLUS MESH. LOCATION OF HIGH IMPACT ZONES SHOULD BE INDICATED ON CONTRACT DRAWINGS.

2. SOFFITS WITHOUT EPS INSULATION REQUIRE EXPANSION JOINTS EVERY 20 FT (6 M).

3. REFER TO DRYVIT PUBLICATION DS 173 FOR SPECIFIC REQUIREMENTS FOR SOFFIT AREAS.

4. BOTTOM EDGE OF DRYVIT DRAINAGE STRIP SHALL BE MASKED DURING INSTALLATION TO PREVENT CLOGGING OF DRAINAGE CHANNELS.

5. REFER TO PRODUCT DATA SHEETS FOR SPECIFIC APPLICATION METHODS.

6. THE ONLY WRB TO BE USED WITH BACKSTOP® FLASH AND FILL IS BACKSTOP® NT™.

The architecture, engineering, and design of the project using the Dryvit and Tremco products are the responsibility of the project's design professional. All products and systems must comply with local building codes and standards. This detail is for general information and guidance only and Dryvit and Tremco specifically disclaims any liability for the use of this detail. The project design professional determines, in its sole discretion, whether this detail or a functionally equivalent detail is best suited for the project. This detail is subject to change without notice. Contact Dryvit and Tremco to ensure you have the most recent version.

Outsulation® Plus MD System®



Detail: Fascia/Uninsulated Soffit Transition

File Name:

Drawn by: KAB

Checked by: CB

Scale: NTS

Date: 9/2021

OPMD 25



Tremco Construction Products Group companies: Dryvit Systems, Inc.; Nudura Inc.; Prebuck LLC; Schul International Co., LLC d/b/a/ Willseal; Tremco Incorporated