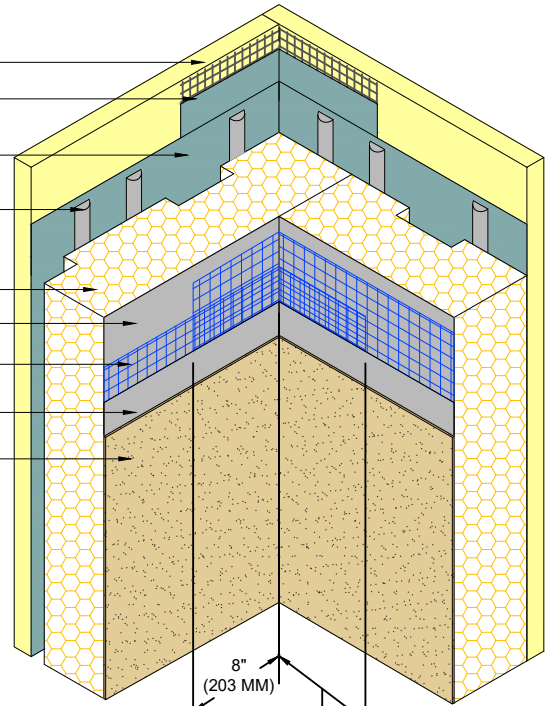
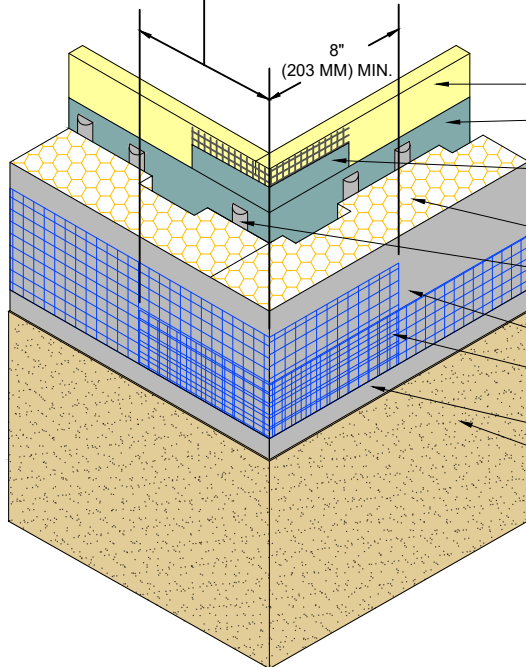


APPROVED SUBSTRATE
 DRYVIT BACKSTOP® NTX™ - TEXTURE OVER DRYVIT GRID TAPE™
 DRYVIT/TREMCO AIR/WATER-RESISTIVE BARRIER COATING
 DRYVIT ADHESIVE IN VERTICAL NOTCHED TROWEL CONFIGURATION APPLIED TO BACK OF EPS
 EPS INSULATION
 DRYVIT BASE COAT
 DRYVIT REINFORCING MESH EMBEDDED IN DRYVIT BASE COAT
 DRYVIT BASE COAT
 DRYVIT FINISH



MUST OVERLAP 8" (203 MM) MIN. (SEE NOTES 2, 3 AND 4)



APPROVED SUBSTRATE
 DRYVIT/TREMCO AIR/WATER-RESISTIVE BARRIER COATING
 DRYVIT BACKSTOP® NTX™ - TEXTURE OVER DRYVIT GRID TAPE OR TREMCO EXOAIR 230 WITH TREMCO 2011 MESH
 EPS INSULATION
 DRYVIT ADHESIVE IN VERTICAL NOTCHED TROWEL CONFIGURATION APPLIED TO BACK OF EPS
 DRYVIT BASE COAT
 DRYVIT REINFORCING MESH EMBEDDED IN DRYVIT BASE COAT
 DRYVIT BASE COAT
 DRYVIT FINISH

MUST OVERLAP 8" (203 MM) MIN. SEE NOTE 3

NOTE:
 1. DRYVIT RECOMMENDS THAT GROUND FLOOR APPLICATIONS AND ALL FACADES EXPOSED TO ABNORMAL STRESS, HIGH TRAFFIC, OR DELIBERATE IMPACT HAVE THE BASE COAT REINFORCED WITH PANZER® MESH PRIOR TO STANDARD™ OR STANDARD PLUS™ MESH. LOCATION OF HIGH IMPACT ZONES SHOULD BE INDICATED ON CONTRACT DRAWINGS.

2. DOUBLE WRAP OUTSIDE CORNERS WITH REINFORCING MESH OR USE CORNER MESH™.

3. DO NOT LAP REINFORCING MESH WITHIN 8" (203 MM) OF A CORNER.

4. OUTSIDE INSULATION BOARD EDGES SHALL BE OFFSET.

The architecture, engineering, and design of the project using the Dryvit and Tremco products are the responsibility of the project's design professional. All products and systems must comply with local building codes and standards. This detail is for general information and guidance only and Dryvit and Tremco specifically disclaims any liability for the use of this detail. The project design professional determines, in its sole discretion, whether this detail or a functionally equivalent detail is best suited for the project. This detail is subject to change without notice. Contact Dryvit and Tremco to ensure you have the most recent version.

Outsulation® MD System®



Dryvit Technical Support: 800-556-7752

Detail: Inside/Outside Corners

Drawn by: KAB

Checked by: CB

Scale: NTS

Date: 1/2022

File Name:

OMD 10



Construction Products Group

www.tremcocpg.com