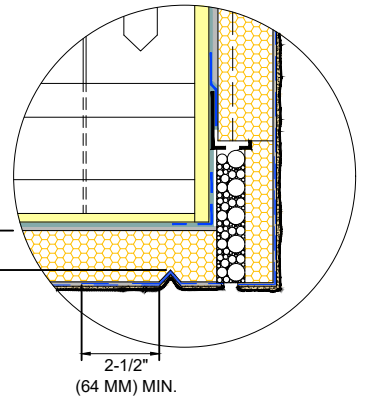


TREMCO DYMONIC 100 OR DRYVIT BACKSTOP® FLASH AND FILL (SEE NOTE 4, 7)



1" (25 MM) MIN.

2-1/2" (64 MM) MIN.

**NOTE:**

1. DRYVIT RECOMMENDS THAT GROUND FLOOR APPLICATIONS AND ALL FACADES EXPOSED TO ABNORMAL STRESS, HIGH TRAFFIC, OR DELIBERATE IMPACT HAVE THE BASE COAT REINFORCED WITH PANZER® MESH PRIOR TO STANDARD™ OR STANDARD PLUS™ MESH. LOCATION OF HIGH IMPACT ZONES SHOULD BE INDICATED ON CONTRACT DRAWINGS.
2. SLOT IN DRYVIT VENT TRACK MUST BE POSITIONED OVER DRYVIT VENT ASSEMBLY.
3. LIGHTLY SAND SURFACE OF DRYVIT VENT TRACK TO MAXIMIZE ADHESION.
4. REFER TO PRODUCT DATA SHEETS FOR SPECIFIC APPLICATION METHODS.

5. GROOVED BOARD AND FLAT STOCK EPS ARE ACCEPTABLE FOR USE IN HORIZONTAL SOFFIT CONDITION.
6. DRYVIT/TREMCO AIR/WATER RESISTIVE BARRIER IS REQUIRED OVER VERTICAL SUBSTRATES. APPLICATION OVER HORIZONTAL SOFFIT SUBSTRATE IS OPTIONAL UNLESS REQUIRED AS PART OF A CONTINUOUS AIR BARRIER SYSTEM.
7. THE ONLY WRB TO BE USED WITH BACKSTOP® FLASH AND FILL IS BACKSTOP® NTX™.

*The architecture, engineering, and design of the project using the Dryvit and Tremco products are the responsibility of the project's design professional. All products and systems must comply with local building codes and standards. This detail is for general information and guidance only and Dryvit and Tremco specifically disclaims any liability for the use of this detail. The project design professional determines, in its sole discretion, whether this detail or a functionally equivalent detail is best suited for the project. This detail is subject to change without notice. Contact Dryvit and Tremco to ensure you have the most recent version.*

**Outsulation® MD System®**



Detail: Transition at Soffit/Fascia Intersection				File Name:
Drawn by: KAB	Checked by: CB	Scale: NTS	Date: 1/2022	OMD 25

