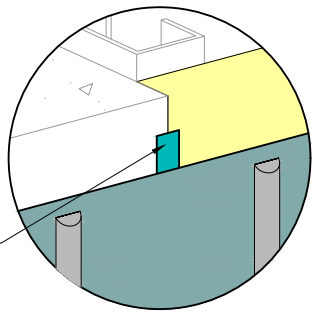


- FRAMING
- APPROVED SUBSTRATE
- DRYVIT BACKSTOP® NTX™ - TEXTURE OVER DRYVIT GRID TAPE™, DRYVIT BACKSTOP® FLASH AND FILL OR TREMCO DYMONIC 100 (SEE INSET DETAIL AND NOTES 2, 3)
- DRYVIT/TREMCO AIR/WATER-RESISTIVE BARRIER COATING
- DRYVIT DETAIL MESH® WRAPPED TO BACKSIDE OF EPS MIN. 2 1/2" (64 MM)
- DRYVIT AQUAFASH® SYSTEM, DRYVIT BACKSTOP® FLASH AND FILL OR TREMCO DYMONIC 100 (SEE INSET DETAIL AND NOTES 2, 3)
- DRYVIT BASE COAT
- DRYVIT REINFORCING MESH EMBEDDED IN DRYVIT BASE COAT
- DRYVIT BASE COAT
- DRYVIT DEMANDIT® OR COLOR PRIME™ ON SURFACES TO RECEIVE SEALANT
- DRYVIT ADHESIVE IN VERTICAL NOTCHED TROWEL CONFIGURATION APPLIED TO BACK OF EPS
- EPS INSULATION BOARD
- DRYVIT/TREMCO APPROVED SEALANT WITH CLOSED CELL BACKER ROD, BY OTHERS
- APPROVED SUBSTRATE
- DRYVIT FINISH

FLUSH OPTION

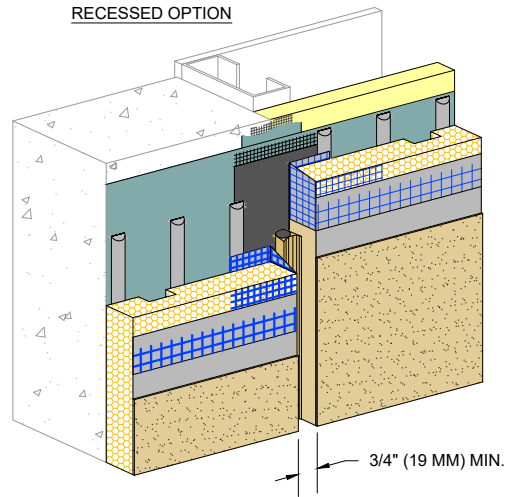
3/4" (19 MM) MIN.

TREMCO DYMONIC 100 OR DRYVIT BACKSTOP® FLASH AND FILL OPTION



TREMCO DYMONIC 100 OR DRYVIT BACKSTOP® FLASH AND FILL (SEE NOTES 2, 3)

RECESSED OPTION



3/4" (19 MM) MIN.

NOTE:  
 1. DRYVIT RECOMMENDS THAT GROUND FLOOR APPLICATIONS AND ALL FACADES EXPOSED TO ABNORMAL STRESS, HIGH TRAFFIC, OR DELIBERATE IMPACT HAVE THE BASE COAT REINFORCED WITH PANZER® MESH PRIOR TO STANDARD™ OR STANDARD PLUS™ MESH. LOCATION OF HIGH IMPACT ZONES SHOULD BE INDICATED ON CONTRACT DRAWINGS.

2. REFER TO PRODUCT DATA SHEETS FOR SPECIFIC APPLICATION METHODS.

3. THE ONLY WRB TO BE USED WITH BACKSTOP® FLASH AND FILL IS BACKSTOP® NTX™.

*The architecture, engineering, and design of the project using the Dryvit and Tremco products are the responsibility of the project's design professional. All products and systems must comply with local building codes and standards. This detail is for general information and guidance only and Dryvit and Tremco specifically disclaims any liability for the use of this detail. The project design professional determines, in its sole discretion, whether this detail or a functionally equivalent detail is best suited for the project. This detail is subject to change without notice. Contact Dryvit and Tremco to ensure you have the most recent version.*

**Outsulation® MD System®**



Dryvit Technical Support: 800-556-7752

Detail: Vertical Expansion Joint - Flush and Recessed Options

Drawn by: KAB

Checked by: CB

Scale: NTS

Date: 1/2022

File Name:

OMD 34



Construction Products Group

www.tremcocpg.com