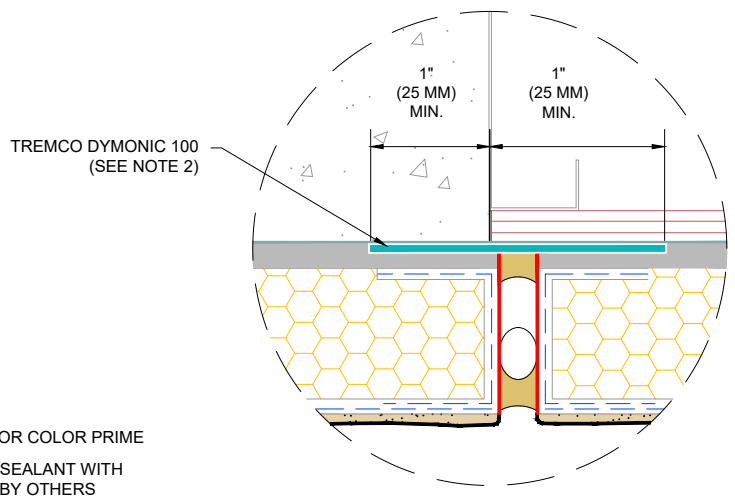
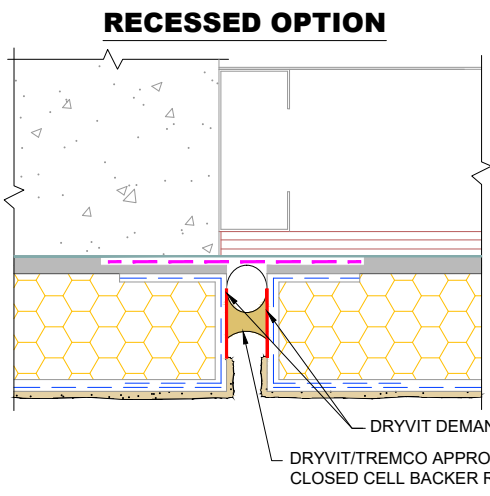


TREMCO DYMONIC 100 OPTION



NOTE:
 1. DRYVIT RECOMMENDS THAT GROUND FLOOR APPLICATIONS AND ALL FACADES EXPOSED TO ABNORMAL STRESS, HIGH TRAFFIC, OR DELIBERATE IMPACT HAVE THE BASE COAT REINFORCED WITH PANZER® MESH PRIOR TO STANDARD™ OR STANDARD PLUS™ MESH. LOCATION OF HIGH IMPACT ZONES SHOULD BE INDICATED ON CONTRACT DRAWINGS.
 2. APPLY DYMONIC 100 AT 40 MILS, 1" (25MM) MIN. ON BOTH SUBSTRATES.

3. REFER TO PRODUCT DATA SHEETS FOR SPECIFIC APPLICATION METHODS.
 4. THE ONLY WRB TO BE USED WITH BACKSTOP FLASH AND FILL IS BACKSTOP® NTX™

The architecture, engineering, and design of the project using the Dryvit and Tremco products are the responsibility of the project's design professional. All products and systems must comply with local building codes and standards. This detail is for general information and guidance only and Dryvit and Tremco specifically disclaims any liability for the use of this detail. The project design professional determines, in its sole discretion, whether this detail or a functionally equivalent detail is best suited for the project. This detail is subject to change without notice. Contact Dryvit and Tremco to ensure you have the most recent version.

Outsulation® PE System™



Detail: Vertical Expansion Joint Options				File Name: OPE 25
Drawn by: SMS	Checked by: CB	Scale: NTS	Date: 1/2022	
www.tremcocpg.com				

