

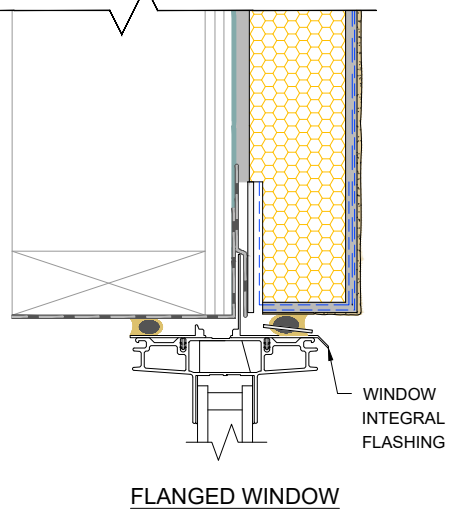
DRYVIT AQUAFLASH® SYSTEM, DRYVIT BACKSTOP® FLASH AND FILL OR TREMCO DYMONIC 100 OVER CONTINUOUS FLASHING WITH END DAMS (SEE NOTES 2, 3)

DRYVIT AQUAFLASH SYSTEM, DRYVIT BACKSTOP® FLASH AND FILL, TREMCO DYMONIC 100, OR TREMCO EXOAIR 230 WITH TREMCO 2011 MESH (SEE NOTES 2, 3)

AIR SEAL PER MANUFACTURER'S REQUIREMENTS, BY OTHERS

REFER TO HDCI 3, HDCI 3A, HDCI 4, HDCI 5, HDCI 5A

**STOREFRONT WINDOW**



**FLANGED WINDOW**

- NOTES:
1. EXTEND DRYVIT STANDARD REINFORCING MESH ONTO EDGE OF EPS.
  2. REFER TO PRODUCT DATA SHEETS FOR SPECIFIC APPLICATION METHODS.
  3. THE ONLY WRB TO BE USED WITH BACKSTOP® FLASH AND FILL IS BACKSTOP® NTX™.

*The architecture, engineering, and design of the project using the Dryvit and Tremco products are the responsibility of the project's design professional. All products and systems must comply with local building codes and standards. This detail is for general information and guidance only and Dryvit and Tremco specifically disclaims any liability for the use of this detail. The project design professional determines, in its sole discretion, whether this detail or a functionally equivalent detail is best suited for the project. This detail is subject to change without notice. Contact Dryvit and Tremco to ensure you have the most recent version.*

**Outsulation® HDCI™ System®**

 <small>Dryvit Technical Support: 800-556-7752</small>	Detail: Storefront and Flanged Window Head				File Name:	 <small>Construction Products Group</small>
	Drawn by: KAB	Checked by: CB	Scale: NTS	Date: 10/2021	HDCI 15	
<small>www.tremcocpg.com</small>						