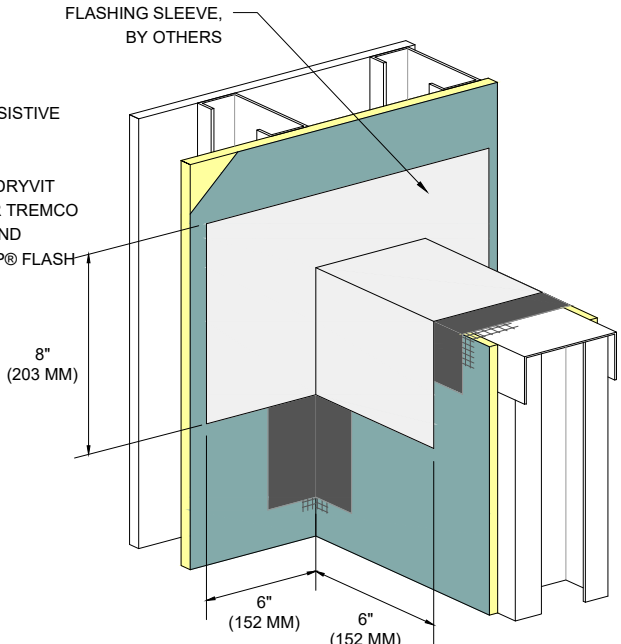
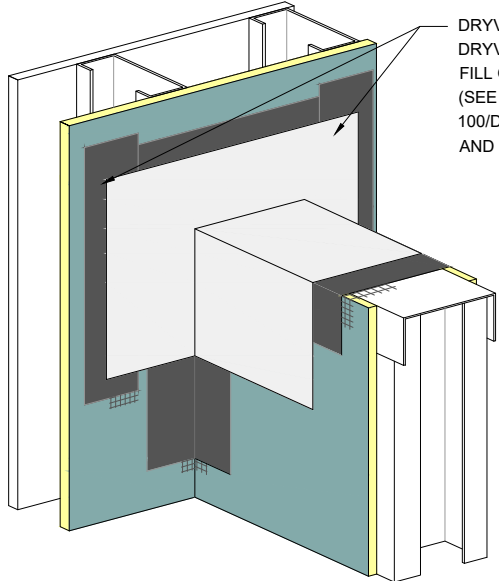


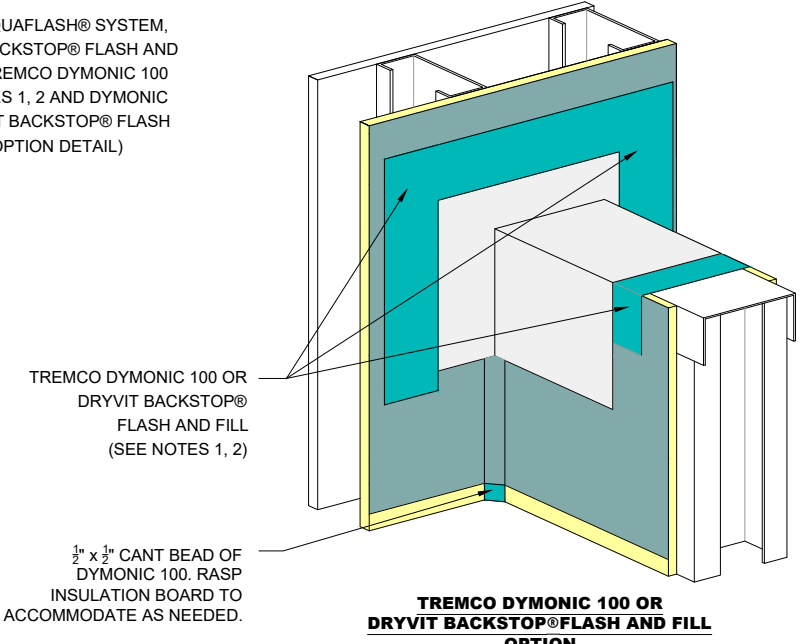
STEP #1



STEP #2



STEP #3



TREMCO DYMONIC 100 OR DRYVIT BACKSTOP® FLASH AND FILL OPTION

NOTES:
 1. REFER TO PRODUCT DATA SHEETS FOR SPECIFIC APPLICATION METHODS.
 2. THE ONLY WRB TO BE USED WITH BACKSTOP® FLASH AND FILL IS BACKSTOP® NTX™.

The architecture, engineering, and design of the project using the Dryvit and Tremco products are the responsibility of the project's design professional. All products and systems must comply with local building codes and standards. This detail is for general information and guidance only and Dryvit and Tremco specifically disclaims any liability for the use of this detail. The project design professional determines, in its sole discretion, whether this detail or a functionally equivalent detail is best suited for the project. This detail is subject to change without notice. Contact Dryvit and Tremco to ensure you have the most recent version.

Outsulation® HDCI™ System®

	Detail: Preparation at Parapet/ Wall Intersection				File Name:	
	Drawn by: KAB	Checked by: CB	Scale: NTS	Date: 10/2021	HDCI 19	

Dryvit Technical Support: 800-556-7752

www.tremcocpg.com

Construction Products Group