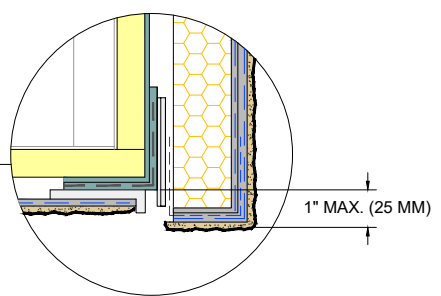


DRYVIT BACKSTOP® NTX™ - TEXTURE OVER DRYVIT GRID TAPE™, DRYVIT BACKSTOP® FLASH AND FILL, TREMCO EXOAIR 230 WITH TREMCO 2011 MESH OR TREMCO DYMONIC 100 (SEE NOTES 5, 6)

DRYVIT DRAINAGE STRIP™ ADHERED WITH DABS OF DRYVIT AP ADHESIVE (SEE NOTE 3)  
CASING BEAD, BY OTHERS





**NOTES:**

- 1. SOFFITS WITHOUT EPS INSULATION REQUIRE EXPANSION JOINTS EVERY 20 FT (6.1 M).
- 2. REFER TO DRYVIT PUBLICATION DS 173 FOR SPECIFIC REQUIREMENTS FOR SOFFIT AREAS.
- 3. BOTTOM EDGE OF DRYVIT DRAINAGE STRIP SHALL BE MASKED DURING INSTALLATION TO PREVENT CLOGGING OF DRAINAGE CHANNELS.
- 4. DRYVIT CORNER MESH AND DRYVIT DETAIL MESH ARE EMBEDDED IN DRYVIT BASE COAT, NOT SHOWN FOR CLARITY.
- 5. REFER TO PRODUCT DATA SHEETS FOR SPECIFIC APPLICATION METHODS.
- 6. THE ONLY WRB TO BE USED WITH BACKSTOP® FLASH AND FILL IS BACKSTOP® NTX™.

*The architecture, engineering, and design of the project using the Dryvit and Tremco products are the responsibility of the project's design professional. All products and systems must comply with local building codes and standards. This detail is for general information and guidance only and Dryvit and Tremco specifically disclaims any liability for the use of this detail. The project design professional determines, in its sole discretion, whether this detail or a functionally equivalent detail is best suited for the project. This detail is subject to change without notice. Contact Dryvit and Tremco to ensure you have the most recent version.*

**Outsulation® HDCI™ System®**

 <small>Dryvit Technical Support: 800-556-7752</small>	Detail: Fascia/ Uninsulated Soffit Transition			File Name:		 <small>Construction Products Group</small>
	Drawn by: KAB	Checked by: CB	Scale: NTS	Date: 10/2021	HDCI 26	
<small>www.tremcocpg.com</small>						