

DRYVIT AQUAFLASH® SYSTEM,  
 DRYVIT BACKSTOP® FLASH  
 AND FILL OR TREMCO  
 DYMONIC 100 (SEE INSET  
 DETAIL AND NOTES 4, 5)

APPROVED SUBSTRATE  
 FRAMING

DRYVIT/TREMCO  
 AIR/WATER-RESISTIVE  
 BARRIER COATING EXTENDED  
 BEHIND FLASHING (SEE NOTE 1)

DRYVIT ADHESIVE IN  
 VERTICAL NOTCHED TROWEL  
 CONFIGURATION APPLIED TO  
 BACK OF EPS

EPS INSULATION BOARD

DRYVIT FINISH

DRYVIT BASE COAT

DRYVIT PANZER® 20 MESH  
 EMBEDDED IN DRYVIT BASE COAT

DRYVIT STANDARD REINFORCING  
 MESH EMBEDDED IN DRYVIT BASE  
 COAT (SEE NOTE 3)

DRYVIT DETAIL MESH®  
 WRAPPED TO BACKSIDE  
 OF EPS MIN. 2 1/2" (64 MM)

DRYVIT CORNER MESH™  
 (SEE NOTE 2)

3/4" (19 MM) MIN.

DRYVIT/TREMCO APPROVED  
 SEALANT WITH CLOSED CELL  
 BACKER ROD AND WEEP TUBES  
 EVERY 24" (610 MM), BY OTHERS

DRYVIT DEMANDIT® OR COLOR  
 PRIME™ ON SURFACE(S) TO  
 RECEIVE SEALANT

DRYVIT DRAINAGE STRIP™  
 ADHERED WITH DABS OF  
 DRYVIT AP ADHESIVE

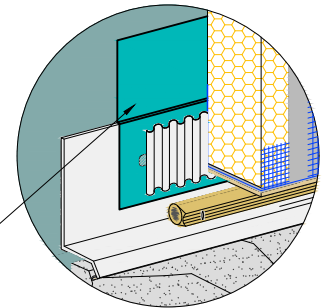
CONTINUOUS FLASHING,  
 BY OTHERS

TREMCO DYMONIC 100 OR  
 DRYVIT BACKSTOP® FLASH  
 AND FILL OPTION

SEALANT WITH BOND BREAKER,  
 BY OTHERS

LAP SIDING, BY OTHERS

TREMCO DYMONIC 100 OR DRYVIT  
 BACKSTOP® FLASH AND FILL  
 (SEE NOTES 4, 5)



NOTES:

1. FOR INSTALLATION OF BACKSTOP® NTX™ BENEATH CLADDINGS OTHER THAN DRYVIT EIFS, REFER TO DRYVIT PUBLICATION DS840.

2. DRYVIT CORNER MESH AND DRYVIT DETAIL MESH ARE EMBEDDED IN A DRYVIT BASE COAT, NOT SHOWN FOR CLARITY.

3. EXTEND DRYVIT STANDARD REINFORCING MESH ONTO EDGE OF EPS.

4. REFER TO PRODUCT DATA SHEETS FOR SPECIFIC APPLICATION METHODS.

5. THE ONLY WRB TO BE USED WITH BACKSTOP® FLASH AND FILL IS BACKSTOP® NTX™.

*The architecture, engineering, and design of the project using the Dryvit and Tremco products are the responsibility of the project's design professional. All products and systems must comply with local building codes and standards. This detail is for general information and guidance only and Dryvit and Tremco specifically disclaims any liability for the use of this detail. The project design professional determines, in its sole discretion, whether this detail or a functionally equivalent detail is best suited for the project. This detail is subject to change without notice. Contact Dryvit and Tremco to ensure you have the most recent version.*

**Outsulation® HDCI™ System®**



Dryvit Technical Support: 800-556-7752

Detail: Horizontal Termination at Lapped Siding

Drawn by: KAB

Checked by: CB

Scale: NTS

Date: 10/2021

File Name:

HDCI 33



Construction Products Group

www.tremcocpg.com