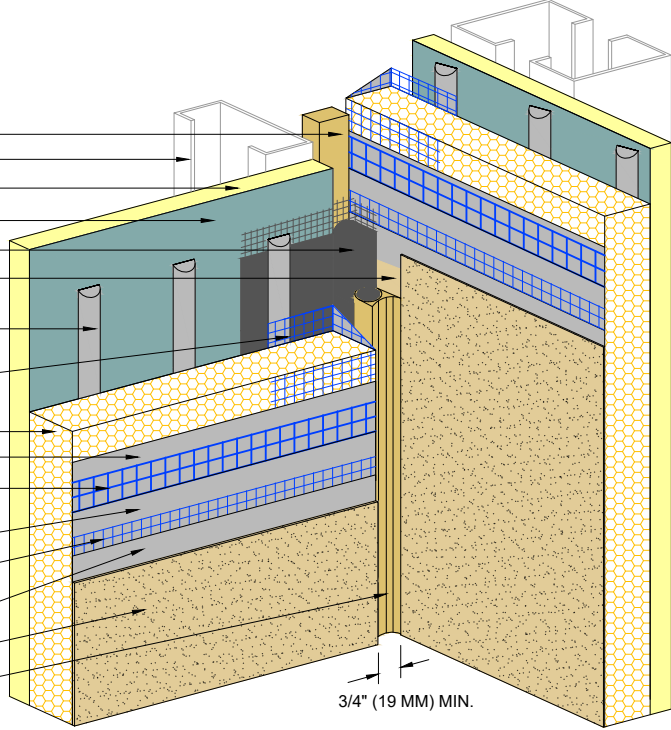


- APPROVED SUBSTRATE
- CLOSED CELL BACKER ROD, BY OTHERS (SEE NOTE 1)
- DRYVIT AQUAFLASH® SYSTEM
- DRYVIT/TREMCO AIR/WATER-RESISTIVE BARRIER COATING
- DRYVIT ADHESIVE IN VERTICAL NOTCHED TROWEL CONFIGURATION APPLIED TO BACK OF EPS
- DRYVIT DETAIL MESH® WRAPPED TO BACKSIDE OF EPS MIN. 2 1/2" (64 MM)
- EPS INSULATION BOARD
- DRYVIT PANZER® 20 REINFORCING MESH EMBEDDED IN DRYVIT BASE COAT
- DRYVIT STANDARD REINFORCING MESH EMBEDDED IN DRYVIT BASE COAT
- DRYVIT BASE COAT
- DRYVIT DEMANDIT® OR COLOR PRIME™ ON SURFACES TO RECEIVE SEALANT
- DRYVIT FINISH
- DRYVIT/TREMCO APPROVED COMPATIBLE SEALANT WITH CLOSED CELL BACKER ROD, BY OTHERS

3/4" MIN. (19 MM)



- OPTIONAL SECONDARY SEAL, BY OTHERS
- FRAMING
- APPROVED SUBSTRATE
- DRYVIT/TREMCO AIR/WATER-RESISTIVE BARRIER COATING
- DRYVIT AQUAFLASH SYSTEM
- DRYVIT DEMANDIT OR COLOR PRIME ON SURFACES TO RECEIVE SEALANT
- DRYVIT ADHESIVE IN VERTICAL NOTCHED TROWEL CONFIGURATION APPLIED TO BACK OF EPS
- DRYVIT DETAIL MESH WRAPPED TO BACKSIDE OF EPS MIN. 2 1/2" (64 MM)
- EPS INSULATION BOARD
- DRYVIT BASE COAT
- DRYVIT PANZER® 20 REINFORCING MESH EMBEDDED IN DRYVIT BASE COAT
- DRYVIT BASE COAT
- DRYVIT STANDARD REINFORCING MESH EMBEDDED IN DRYVIT BASE COAT
- DRYVIT BASE COAT
- DRYVIT FINISH
- DRYVIT/TREMCO APPROVED SEALANT WITH CLOSED CELL BACKER ROD, BY OTHERS

3/4" (19 MM) MIN.

NOTE:
1. LOCATE EXTERNAL SEALANT JOINT WITHIN 2" (51 MM) OF SUBSTRATE JOINT.

The architecture, engineering, and design of the project using the Dryvit and Tremco products are the responsibility of the project's design professional. All products and systems must comply with local building codes and standards. This detail is for general information and guidance only and Dryvit and Tremco specifically disclaims any liability for the use of this detail. The project design professional determines, in its sole discretion, whether this detail or a functionally equivalent detail is best suited for the project. This detail is subject to change without notice. Contact Dryvit and Tremco to ensure you have the most recent version.

Outsulation® HDCI™ System®



Detail: Through-Wall Expansion Joint				File Name:
Drawn by: KAB	Checked by: CB	Scale: NTS	Date: 10/2021	HDCI 35
www.tremcocpg.com				

