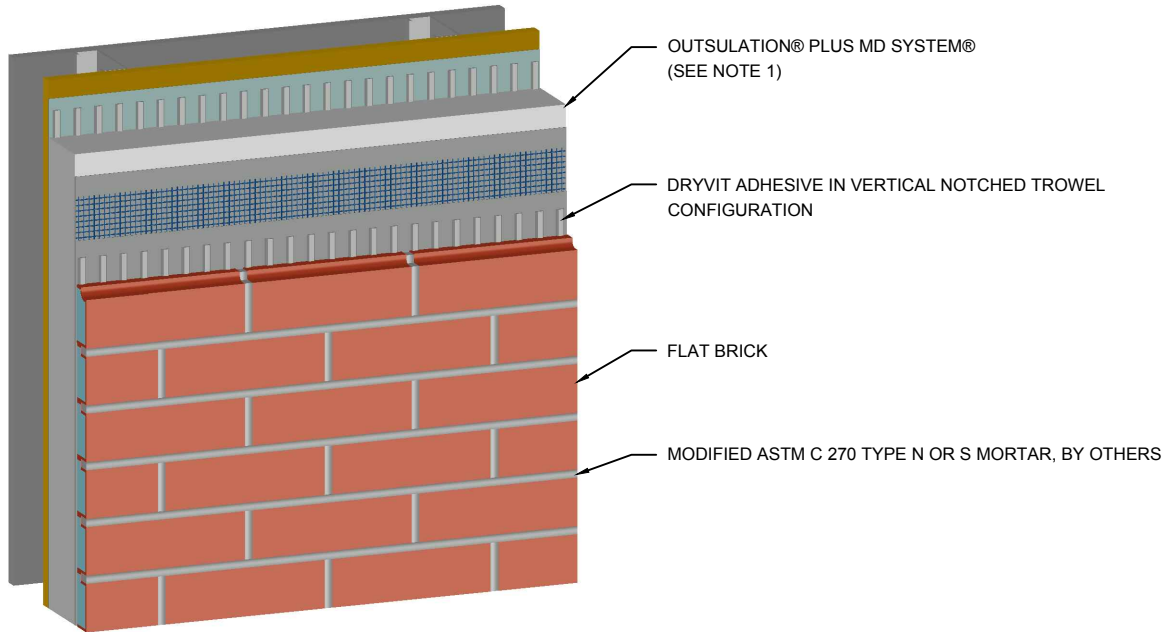
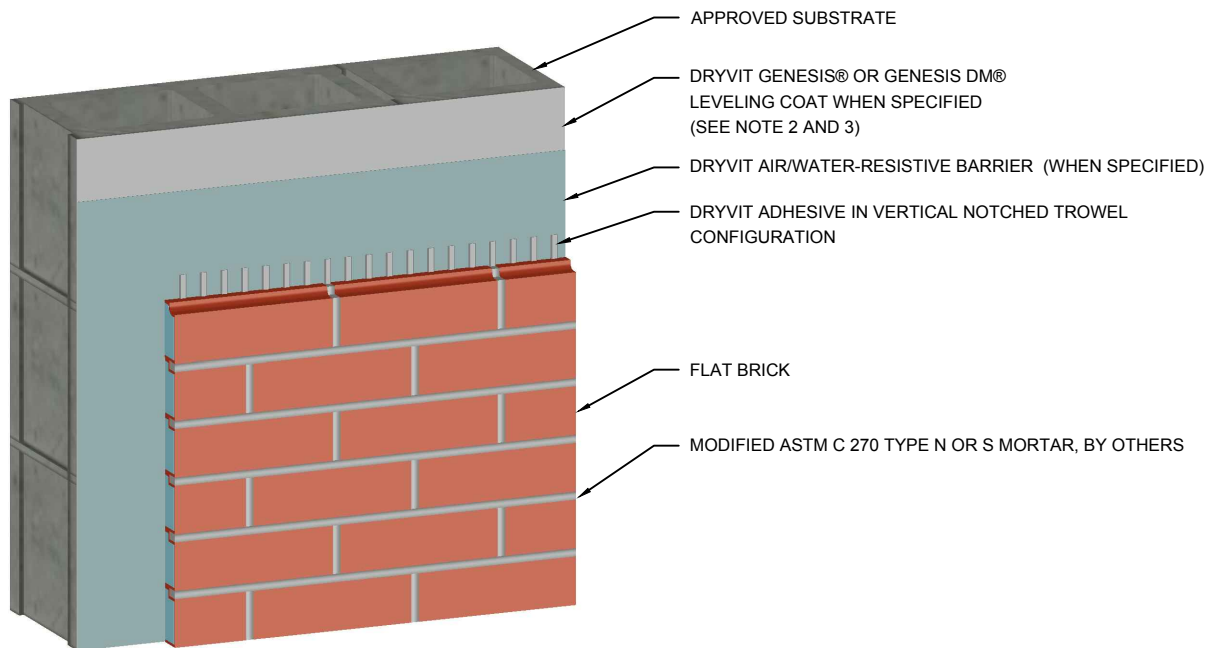


**NEWBRICK™
APPLICATION
OVER CI**



**NEWBRICK™
APPLICATION
OVER CMU**



NewBrick®

NewBrick Cutaways

NOTES:

1. OUTSULATION PLUS MD SYSTEM SHOWN FOR ILLUSTRATIVE PURPOSES ONLY. REFER TO APPROPRIATE DRYVIT SYSTEM LITERATURE FOR SYSTEM INSTALLATION.

2. THE SUBSTRATE SHALL BE FREE OF PROJECTIONS AND SHALL HAVE NO PLANAR IRREGULARITIES GREATER THAN 1/4" (6.4 MM) WITHIN ANY 4'-0" (1.2 M) RADIUS.

3. WHEN SPECIFIED A DRYVIT AIR/WATER-RESISTIVE BARRIER CAN BE APPLIED OVER THE GENESIS OR GENESIS DM LEVELING COAT

The architecture, engineering, and design of the project using the Dryvit products is the responsibility of the project's design professional. All systems must comply with local building codes and standards. This detail is for general information and guidance only and Dryvit specifically disclaims any liability for the use of this detail and for the architecture, design, engineering or workmanship of any project. The project design professional determines, in its sole discretion, whether this detail or a functionally equivalent detail is best suited for the project. Use of a functionally equivalent detail does not violate Dryvit's warranty. This detail is subject to change without notice. Contact Dryvit to ensure you have the most recent version.