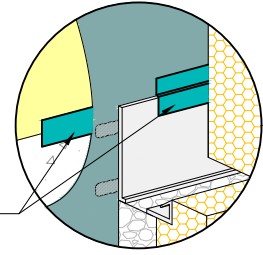


- BY OTHERS
- OUTSULATION MD SYSTEM
- DRYVIT AIR/ WATER-RESISTIVE BARRIER COATING
- DRYVIT ADHESIVE IN VERTICAL NOTCHED TROWEL CONFIGURATION APPLIED TO BACK OF EPS
- EPS INSULATION
- APPROVED SUBSTRATE
- DRYVIT BASE COAT
- DRYVIT REINFORCING MESH EMBEDDED IN DRYVIT BASE COAT
- DRYVIT BASE COAT
- DRYVIT AQUAFASH® SYSTEM, DRYVIT BACKSTOP® FLASH AND FILL OR DYMONIC 100 (SEE NOTE 4, 6)
- DRYVIT BACKSTOP® NTX™ - TEXTURE OVER DRYVIT GRID TAPE™, DRYVIT BACKSTOP® FLASH AND FILL OR DYMONIC 100 (SEE INSET DETAIL AND NOTE 4, 6)
- DRYVIT VENT TRACK™ (SEE NOTE 3 & 5)
- DRYVIT FINISH
- DRYVIT VENT ASSEMBLY™, LEAVE VENT ASSEMBLY BOTTOM OPEN TO DRAIN
- DRYVIT DETAIL MESH® WRAPPED TO BACKSIDE OF EPS MIN. 2 1/2" (64 MM)
- TREMCO DYMONIC 100 OR DRYVIT BACKSTOP® FLASH AND FILL OPTION



DYMONIC 100 OR DRYVIT BACKSTOP® FLASH AND FILL (SEE NOTE 4, 6)

NOTE:

1. DRYVIT RECOMMENDS THAT GROUND FLOOR APPLICATIONS AND ALL FACADES EXPOSED TO ABNORMAL STRESS, HIGH TRAFFIC, OR DELIBERATE IMPACT HAVE THE BASE COAT REINFORCED WITH PANZER® MESH PRIOR TO STANDARD™ OR STANDARD PLUS™ MESH. LOCATION OF HIGH IMPACT ZONES SHOULD BE INDICATED ON CONTRACT DRAWINGS.

2. EXPANSION JOINT IS REQUIRED ALONG TOP OF FOUNDATION IF 2'-0" (610 MM) DIMENSION IS EXCEEDED.

3. SLOT IN VENT TRACK MUST BE POSITIONED OVER DRYVIT VENT ASSEMBLY.

4. REFER TO PRODUCT DATA SHEETS FOR SPECIFIC APPLICATION METHODS.

5. LIGHTLY SAND SURFACE OF TRACK TO MAXIMIZE ADHESION.

6. THE ONLY WRB TO BE USED WITH BACKSTOP® FLASH AND FILL IS BACKSTOP® NTX™.

The architecture, engineering, and design of the project using the Dryvit and Tremco products are the responsibility of the project's design professional. All products and systems must comply with local building codes and standards. This detail is for general information and guidance only and Dryvit and Tremco specifically disclaims any liability for the use of this detail. The project design professional determines, in its sole discretion, whether this detail or a functionally equivalent detail is best suited for the project. This detail is subject to change without notice. Contact Dryvit and Tremco to ensure you have the most recent version.

Outsulation® MD System®

<p>Dryvit Technical Support: 800-556-7752</p>	Detail: Grade Termination				File Name:		<p>Construction Products Group</p>
	Drawn by: KAB	Checked by: CB	Scale: NTS	Date: 1/2022	OMD 12		
www.tremcocpg.com							