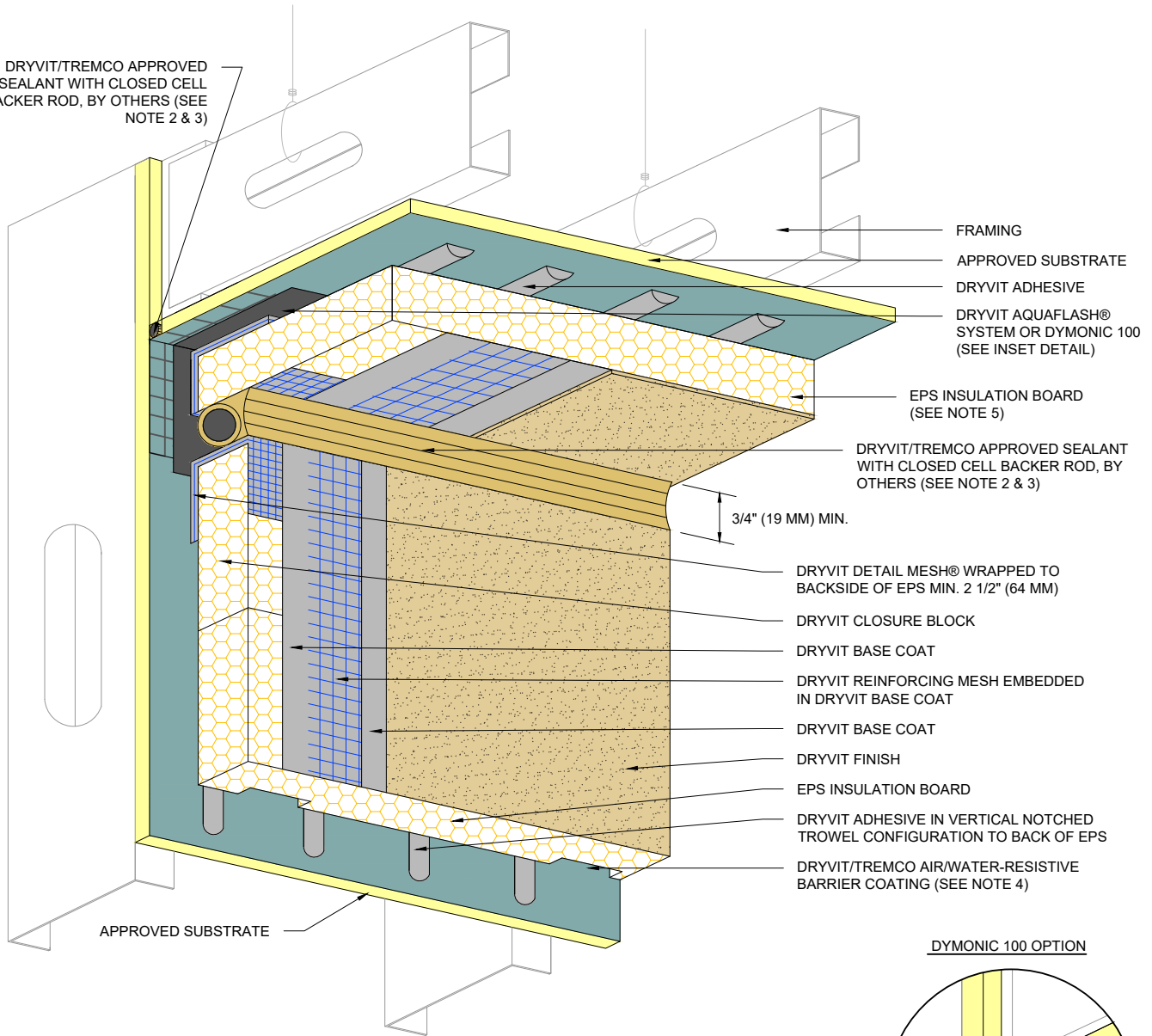


DRYVIT/TREMCO APPROVED SEALANT WITH CLOSED CELL BACKER ROD, BY OTHERS (SEE NOTE 2 & 3)



FRAMING  
APPROVED SUBSTRATE  
DRYVIT ADHESIVE  
DRYVIT AQUAFLASH® SYSTEM OR DYMonic 100 (SEE INSET DETAIL)

EPS INSULATION BOARD (SEE NOTE 5)  
DRYVIT/TREMCO APPROVED SEALANT WITH CLOSED CELL BACKER ROD, BY OTHERS (SEE NOTE 2 & 3)

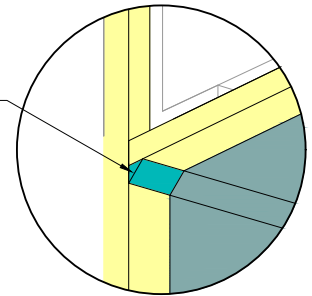
3/4" (19 MM) MIN.

DRYVIT DETAIL MESH® WRAPPED TO BACKSIDE OF EPS MIN. 2 1/2" (64 MM)  
DRYVIT CLOSURE BLOCK  
DRYVIT BASE COAT  
DRYVIT REINFORCING MESH EMBEDDED IN DRYVIT BASE COAT  
DRYVIT BASE COAT  
DRYVIT FINISH  
EPS INSULATION BOARD  
DRYVIT ADHESIVE IN VERTICAL NOTCHED TROWEL CONFIGURATION TO BACK OF EPS  
DRYVIT/TREMCO AIR/WATER-RESISTIVE BARRIER COATING (SEE NOTE 4)

APPROVED SUBSTRATE

**DYMonic 100 OPTION**

1/2" x 1/2" CANT BEAD OF DYMonic 100. RASP INSULATION BOARD TO ACCOMMODATE AS NEEDED.



**NOTE:**

1. DRYVIT RECOMMENDS THAT GROUND FLOOR APPLICATIONS AND ALL FACADES EXPOSED TO ABNORMAL STRESS, HIGH TRAFFIC, OR DELIBERATE IMPACT HAVE THE BASE COAT REINFORCED WITH PANZER® MESH PRIOR TO STANDARD™ OR STANDARD PLUS™ MESH. LOCATION OF HIGH IMPACT ZONES SHOULD BE INDICATED ON CONTRACT DRAWINGS.
2. SEALANT JOINT IS REQUIRED FOR SUSPENDED SOFFITS. OPTIONAL FOR RIGIDLY FRAMED.
3. DRYVIT DEMANDIT® OR COLOR PRIME™ ON SURFACES TO RECEIVE SEALANT.

4. DRYVIT/TREMCO AIR/WATER-RESISTIVE BARRIER IS REQUIRED OVER VERTICAL SUBSTRATES. APPLICATION OVER HORIZONTAL SOFFIT SUBSTRATE IS OPTIONAL UNLESS REQUIRED AS PART OF A CONTINUOUS AIR BARRIER SYSTEM.
5. GROOVED BOARD AND FLAT STOCK EPS ARE ACCEPTABLE FOR USE IN HORIZONTAL SOFFIT CONDITION.

*The architecture, engineering, and design of the project using the Dryvit and Tremco products are the responsibility of the project's design professional. All products and systems must comply with local building codes and standards. This detail is for general information and guidance only and Dryvit and Tremco specifically disclaims any liability for the use of this detail. The project design professional determines, in its sole discretion, whether this detail or a functionally equivalent detail is best suited for the project. This detail is subject to change without notice. Contact Dryvit and Tremco to ensure you have the most recent version.*

**Outsulation® MD System®**



Dryvit Technical Support: 800-556-7752

Detail: Vertical Wall/Suspended Soffit Transition				File Name:
Drawn by: KAB	Checked by: CB	Scale: NTS	Date: 1/2022	OMD 24



www.tremcocpg.com