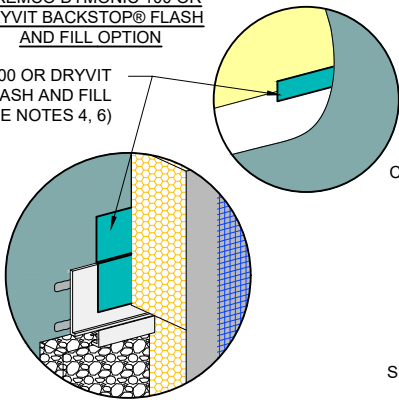


TREMCO DYMONIC 100 OR DRYVIT BACKSTOP® FLASH AND FILL OPTION

DYMONIC 100 OR DRYVIT BACKSTOP® FLASH AND FILL (SEE NOTES 4, 6)



CLOSED CELL BACKER ROD, BY OTHERS

Section A-A

SEALANT MATERIAL, BY OTHERS

DRYVIT AQUAFASH SYSTEM, DRYVIT BACKSTOP® FLASH AND FILL OR TREMCO DYMONIC 100 (SEE NOTES 5, 6)

VENT ASSEMBLY LOCATION
SEALANT AGAINST DRYVIT AQUAFASH SYSTEM, DRYVIT BACKSTOP® FLASH AND FILL OR TREMCO DYMONIC 100 WITH BOND BREAKER TAPE AT VENT ASSEMBLY ONLY (SEE NOTES 5, 6)

NOTE:

1. DRYVIT RECOMMENDS THAT GROUND FLOOR APPLICATIONS AND ALL FACADES EXPOSED TO ABNORMAL STRESS, HIGH TRAFFIC, OR DELIBERATE IMPACT HAVE THE BASE COAT REINFORCED WITH PANZER® MESH PRIOR TO STANDARD™ OR STANDARD PLUS™ MESH. LOCATION OF HIGH IMPACT ZONES SHOULD BE INDICATED ON CONTRACT DRAWINGS.

2. SLOT IN DRYVIT VENT TRACK MUST BE POSITIONED OVER DRYVIT VENT ASSEMBLY.

3. LIGHTLY SAND SURFACE OF DRYVIT VENT TRACK TO MAXIMIZE ADHESION.

4. REFER TO PRODUCT DATA SHEETS FOR SPECIFIC APPLICATION METHODS.

5. SEALANT SHALL TURN IN AT DRYVIT VENT ASSEMBLY LOCATIONS TO ALLOW FOR DRAINAGE. SEE SECTION A-A.

6. THE ONLY WRB TO BE USED WITH BACKSTOP® FLASH AND FILL IS BACKSTOP® NTX™.

The architecture, engineering, and design of the project using the Dryvit and Tremco products are the responsibility of the project's design professional. All products and systems must comply with local building codes and standards. This detail is for general information and guidance only and Dryvit and Tremco specifically disclaims any liability for the use of this detail. The project design professional determines, in its sole discretion, whether this detail or a functionally equivalent detail is best suited for the project. This detail is subject to change without notice. Contact Dryvit and Tremco to ensure you have the most recent version.

Outsulation® MD System®



Detail: Horizontal Joint - Substrate Change

File Name:

Drawn by: KAB

Checked by: CB

Scale: NTS

1/2022

OMD 29



Dryvit Technical Support: 800-556-7752

www.tremcocpg.com