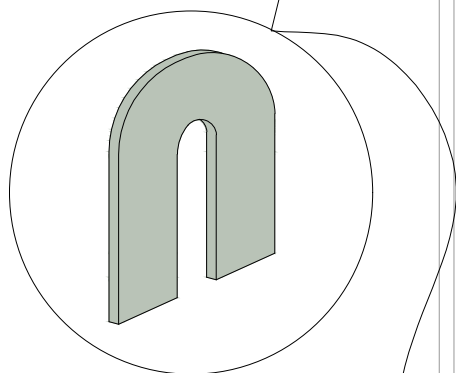
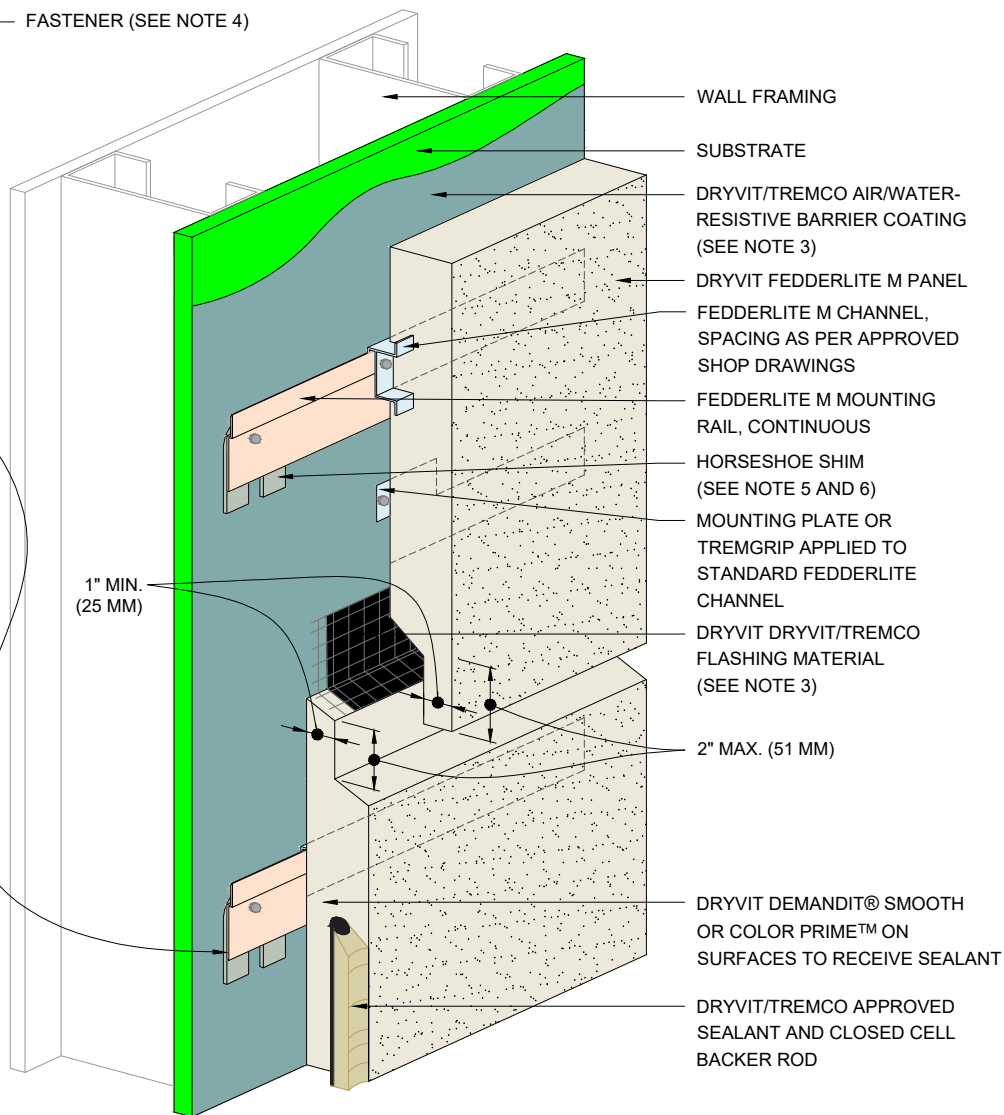
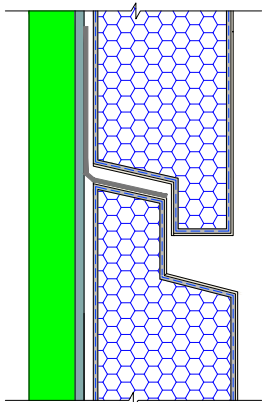


FASTENER (SEE NOTE 4)



HORSESHOE SHIM
(SEE NOTE 5 AND 6)



NOTES:

1. DRYVIT RECOMMENDS THAT GROUND FLOOR APPLICATIONS AND ALL FACADES EXPOSED TO ABNORMAL STRESS, HIGH TRAFFIC, OR DELIBERATE IMPACT HAVE THE BASE COAT REINFORCED WITH PANZER® MESH PRIOR TO STANDARD OR STANDARD PLUS MESH. LOCATION OF HIGH IMPACT ZONES SHOULD BE INDICATED ON CONTRACT DRAWINGS.
2. STRUCTURAL ELEMENTS PER DESIGN ENGINEER.
3. REFER TO DRYVIT PUBLICATION DS840 FOR AWRB AND FLASHING APPLICATION.
4. FASTENER DESIGN PER APPROVED ENGINEERED SHOP DRAWINGS.
5. SHIM THICKNESS TO BE 1/16" MIN. AT EACH ATTACHMENT RAIL FASTENER - REQUIRED FOR DRAINAGE. SHIM TO BE PLACED AT EACH MOUNTING RAIL FASTENER.
6. SHIMS TO BE USED FOR DRAINAGE AND TO CORRECT IRREGULARITIES IN THE WALL WHEN REQUIRED.

The architecture, engineering, and design of the project using the Dryvit products are the responsibility of the project's design professional. All products and systems must comply with local building codes and standards. This detail is for general information and guidance only and Dryvit specifically disclaims any liability for the use of this detail. The project design professional determines, in its sole discretion, whether this detail or a functionally equivalent detail is best suited for the project. This detail is subject to change without notice. Contact Dryvit to ensure you have the most recent version.

Fedderlite® M Panel System



Dryvit Technical Support: 800-556-7752

Detail: Horizontal Shiplap Joint with Drainage

Drawn by: KAB

Checked by: SM

Scale: NTS

Date: 3/20/2024

File Name:

FLM 9



Construction Products Group

www.tremcocpg.com