

APPROVED SUBSTRATE

$\frac{1}{2}$ " x $\frac{1}{2}$ " CANT BEAD OF TREMCO DYMONIC 100. RASP INSULATION BOARD TO ACCOMMODATE AS NEEDED.

DRYVIT/TREMCO AIR/WATER-RESISTIVE BARRIER COATING

DRYVIT ADHESIVE IN VERTICAL NOTCHED TROWEL CONFIGURATION APPLIED TO BACK OF EPS

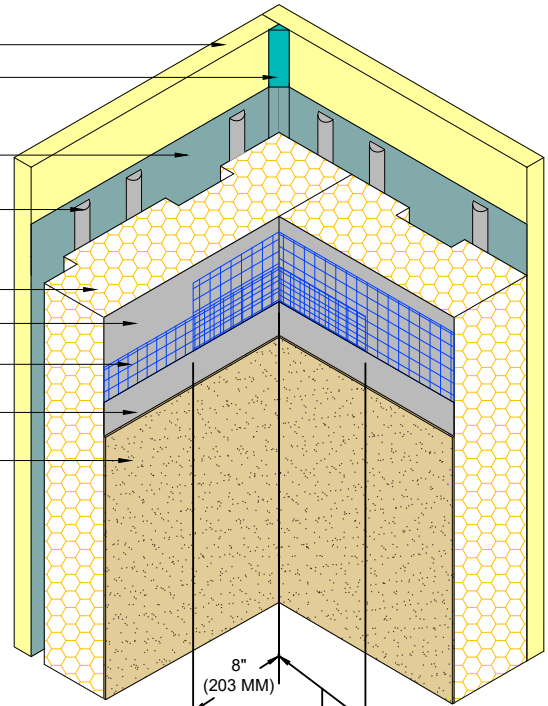
EPS INSULATION

DRYVIT BASE COAT

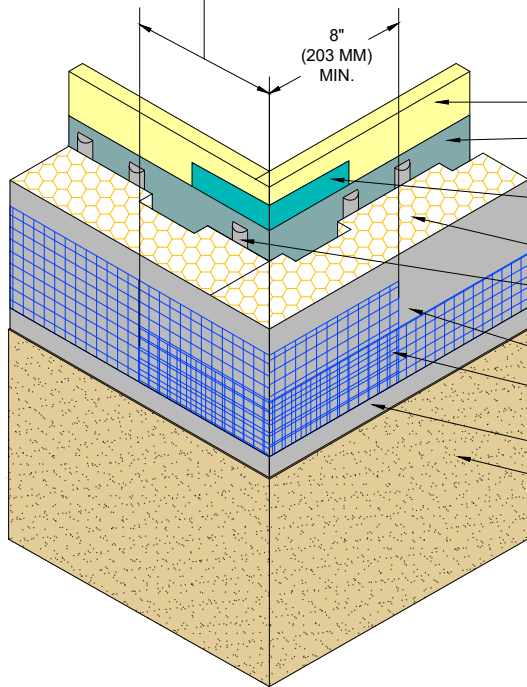
DRYVIT REINFORCING MESH EMBEDDED IN DRYVIT BASE COAT

DRYVIT BASE COAT

DRYVIT FINISH



MUST OVERLAP 8" (203 MM) MIN. (SEE NOTES 2, 3 AND 4)



APPROVED SUBSTRATE

DRYVIT/TREMCO AIR/WATER-RESISTIVE BARRIER COATING

TREMCO DYMONIC 100 OR DRYVIT BACKSTOP® FLASH AND FILL (SEE NOTE 5, 6)

EPS INSULATION

DRYVIT ADHESIVE IN VERTICAL NOTCHED TROWEL CONFIGURATION APPLIED TO BACK OF EPS

DRYVIT BASE COAT

DRYVIT REINFORCING MESH EMBEDDED IN DRYVIT BASE COAT

DRYVIT BASE COAT

DRYVIT FINISH

MUST OVERLAP 8" (203 MM) MIN. SEE NOTE 3

NOTE:

1. DRYVIT RECOMMENDS THAT GROUND FLOOR APPLICATIONS AND ALL FACADES EXPOSED TO ABNORMAL STRESS, HIGH TRAFFIC, OR DELIBERATE IMPACT HAVE THE BASE COAT REINFORCED WITH PANZER® MESH PRIOR TO STANDARD™ OR STANDARD PLUS™ MESH. LOCATION OF HIGH IMPACT ZONES SHOULD BE INDICATED ON CONTRACT DRAWINGS.

2. DOUBLE WRAP OUTSIDE CORNERS WITH REINFORCING MESH OR USE CORNER MESH™.

3. DO NOT LAP REINFORCING MESH WITHIN 8" (203 MM) OF A CORNER.

4. OUTSIDE INSULATION BOARD EDGES SHALL BE OFFSET.

5. REFER TO PRODUCT DATA SHEETS FOR SPECIFIC APPLICATION METHODS.

6. THE ONLY WRB TO BE USED WITH BACKSTOP® FLASH AND FILL IS BACKSTOP® NTX™.

The architecture, engineering, and design of the project using the Dryvit and Tremco products are the responsibility of the project's design professional. All products and systems must comply with local building codes and standards. This detail is for general information and guidance only and Dryvit and Tremco specifically disclaims any liability for the use of this detail. The project design professional determines, in its sole discretion, whether this detail or a functionally equivalent detail is best suited for the project. This detail is subject to change without notice. Contact Dryvit and Tremco to ensure you have the most recent version.

Outsulation® MD System®



Dryvit Technical Support: 800-556-7752

Detail: Inside/Outside Corners- Tremco Dymonic 100 or Backstop® Flash and Fill Option

Drawn by: KAB

Checked by: CB

Scale: NTS

Date: 1/2022

File Name:

OMD 10a



Construction Products Group

www.tremcoopg.com