

1/2" x 1/2" CANT BEAD OF TREMCO DYMONIC 100. RASP INSULATION BOARD TO ACCOMMODATE AS NEEDED.

APPROVED SUBSTRATE

DRYVIT ADHESIVE IN VERTICAL NOTCHED TROWEL CONFIGURATION APPLIED TO BACK OF EPS

DRYVIT/TREMCO AIR/WATER-RESISTIVE BARRIER COATING

EPS INSULATION

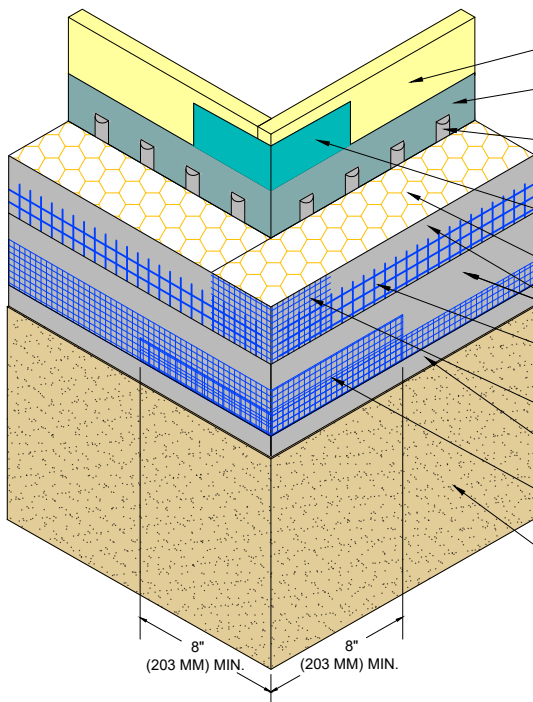
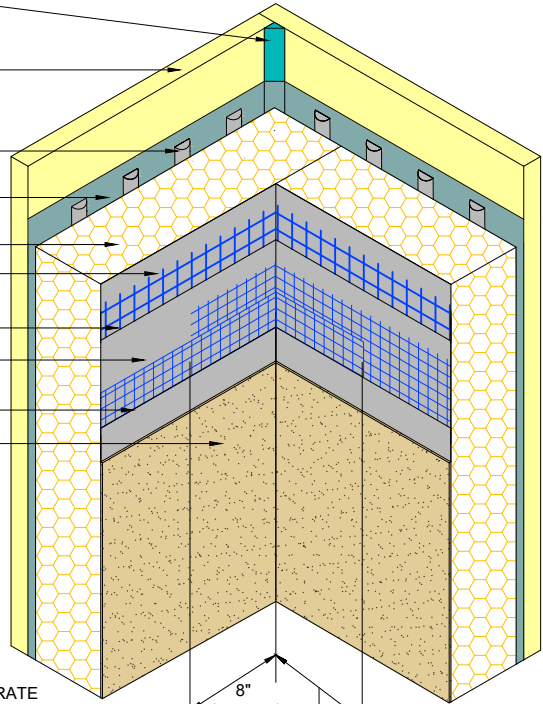
DRYVIT PANZER 20 REINFORCING MESH

DRYVIT BASE COAT

DRYVIT STANDARD REINFORCING MESH EMBEDDED IN DRYVIT BASE COAT

DRYVIT BASE COAT

DRYVIT FINISH



APPROVED SUBSTRATE

DRYVIT/TREMCO AIR/WATER-RESISTIVE BARRIER COATING

DRYVIT ADHESIVE IN VERTICAL NOTCHED TROWEL CONFIGURATION APPLIED TO BACK OF EPS

TREMCO DYMONIC 100 OR DRYVIT BACKSTOP® FLASH AND FILL (SEE NOTES 3, 4)

EPS INSULATION

DRYVIT BASE COAT

DRYVIT PANZER® 20 REINFORCING MESH EMBEDDED IN DRYVIT BASE COAT

DRYVIT CORNER MESH™

DRYVIT BASE COAT

DRYVIT STANDARD REINFORCING MESH OVERLAP MIN. 8" (203 MM) AT CORNER

DRYVIT FINISH

8" (203 MM)

MUST OVERLAP 8" (203 MM) MIN.

8" (203 MM) MIN. 8" (203 MM) MIN.

NOTES:

1. DOUBLE WRAP CORNERS WITH REINFORCING MESH OR USE CORNER MESH.

2. OUTSIDE INSULATION BOARD EDGES SHALL BE OFFSET.

3. REFER TO PRODUCT DATA SHEETS FOR SPECIFIC APPLICATION METHODS.

4. THE ONLY WRB TO BE USED WITH BACKSTOP® FLASH AND FILL IS BACKSTOP® NTX™.

The architecture, engineering, and design of the project using the Dryvit and Tremco products are the responsibility of the project's design professional. All products and systems must comply with local building codes and standards. This detail is for general information and guidance only and Dryvit and Tremco specifically disclaims any liability for the use of this detail. The project design professional determines, in its sole discretion, whether this detail or a functionally equivalent detail is best suited for the project. This detail is subject to change without notice. Contact Dryvit and Tremco to ensure you have the most recent version.

Outsulation® HDCI™ System®



Dryvit Technical Support: 800-556-7752

Detail: Inside/ Outside Corners - Tremco Dymonic 100 or Backstop® Flash and Fill Option

Drawn by: KAB

Checked by: CB

Scale: NTS

Date: 10/2021

File Name:

HDCI 7a



Construction Products Group

www.tremcocpg.com