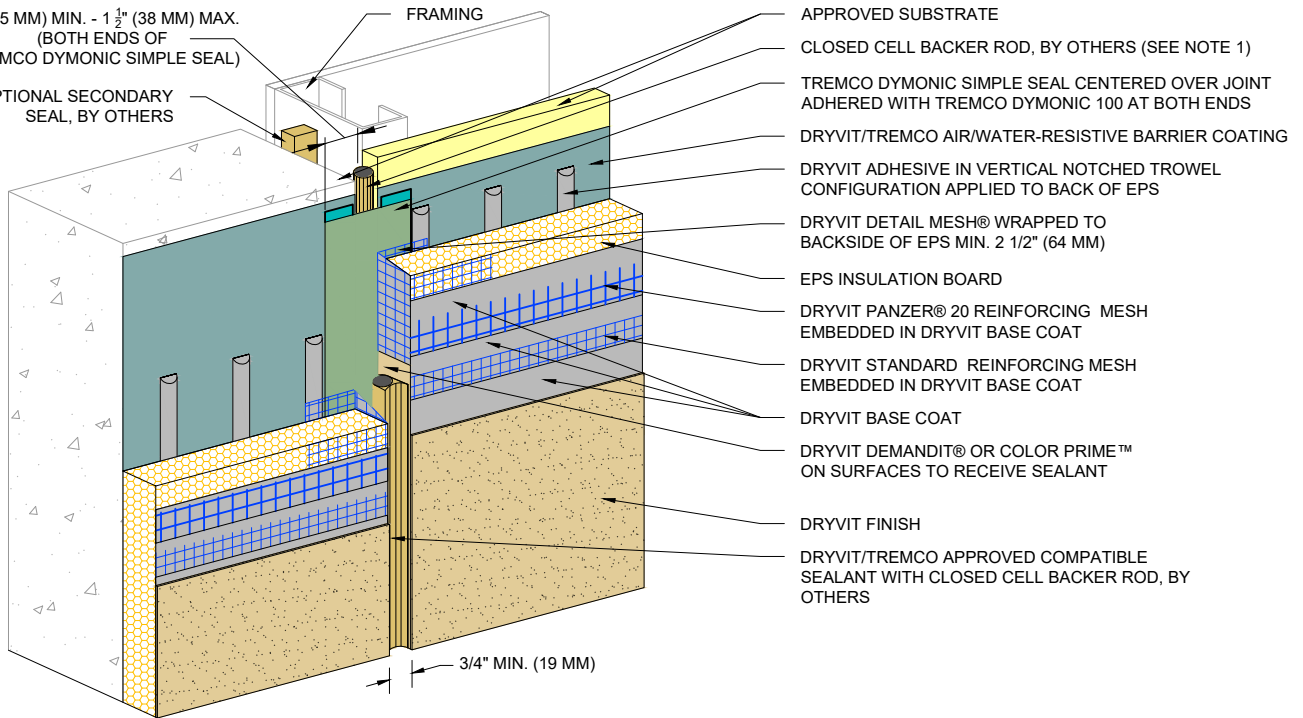


1" (25 MM) MIN. - 1 1/2" (38 MM) MAX.
(BOTH ENDS OF
TREMCO DYMONIC SIMPLE SEAL)

OPTIONAL SECONDARY
SEAL, BY OTHERS

FRAMING



APPROVED SUBSTRATE
CLOSED CELL BACKER ROD, BY OTHERS (SEE NOTE 1)
TREMCO DYMONIC SIMPLE SEAL CENTERED OVER JOINT
ADHERED WITH TREMCO DYMONIC 100 AT BOTH ENDS
DRYVIT/TREMCO AIR/WATER-RESISTIVE BARRIER COATING
DRYVIT ADHESIVE IN VERTICAL NOTCHED TROWEL
CONFIGURATION APPLIED TO BACK OF EPS
DRYVIT DETAIL MESH® WRAPPED TO
BACKSIDE OF EPS MIN. 2 1/2" (64 MM)
EPS INSULATION BOARD
DRYVIT PANZER® 20 REINFORCING MESH
EMBEDDED IN DRYVIT BASE COAT
DRYVIT STANDARD REINFORCING MESH
EMBEDDED IN DRYVIT BASE COAT
DRYVIT BASE COAT
DRYVIT DEMANDIT® OR COLOR PRIME™
ON SURFACES TO RECEIVE SEALANT
DRYVIT FINISH
DRYVIT/TREMCO APPROVED COMPATIBLE
SEALANT WITH CLOSED CELL BACKER ROD, BY
OTHERS

3/4" MIN. (19 MM)

NOTE:
1. LOCATE EXTERNAL SEALANT JOINT WITHIN
2" (51 MM) OF SUBSTRATE JOINT.

The architecture, engineering, and design of the project using the Dryvit and Tremco products are the responsibility of the project's design professional. All products and systems must comply with local building codes and standards. This detail is for general information and guidance only and Dryvit and Tremco specifically disclaims any liability for the use of this detail. The project design professional determines, in its sole discretion, whether this detail or a functionally equivalent detail is best suited for the project. This detail is subject to change without notice. Contact Dryvit and Tremco to ensure you have the most recent version.

Outsulation® HDCl™ System®



Dryvit Technical Support: 800-556-7752

Detail: Through-Wall Expansion Joint - Dymonic Simple Seal

Drawn by: KAB

Checked by: CB

Scale: NTS

Date: 10/2021

File Name:

HDCl 35a



Construction Products Group

www.tremcocpg.com