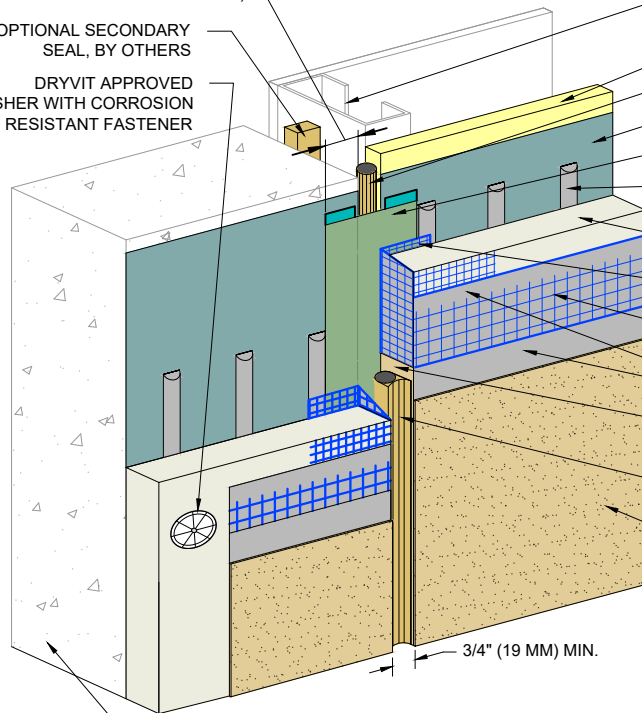


1" (25 MM) MIN. - 1 1/2" (38 MM) MAX.
(BOTH ENDS OF
TREMCO DYMONIC SIMPLE SEAL)

OPTIONAL SECONDARY
SEAL, BY OTHERS

DRYVIT APPROVED
WASHER WITH CORROSION
RESISTANT FASTENER



FRAMING

APPROVED SUBSTRATE

CLOSED CELL BACKER ROD, BY OTHERS (SEE NOTE 3)

DRYVIT/TREMCO AIR/WATER-RESISTIVE BARRIER COATING

TREMCO DYMONIC SIMPLE SEAL CENTERED OVER JOINT
ADHERED WITH TREMCO DYMONIC 100 AT BOTH ENDS

DRYVIT GENESIS® ADHESIVE APPLIED IN VERTICAL NOTCHED
TROWEL CONFIGURATION TO BACK OF INSULATION BOARD

DRYVIT/TREMCO APPROVED XPS INSULATION BOARD

DRYVIT DETAIL MESH® WRAPPED TO BACKSIDE
OF INSULATION BOARD MIN. 2-1/2" (64 MM)

DRYVIT STANDARD PLUS REINFORCING MESH
EMBEDDED IN DRYVIT GENESIS BASE COAT

DRYVIT GENESIS BASE COAT

DRYVIT DEMANDIT® OR COLOR PRIME™
ON SURFACES TO RECEIVE SEALANT

DRYVIT/TREMCO APPROVED COMPATIBLE
SEALANT WITH CLOSED CELL BACKER ROD, BY
OTHERS

DRYVIT FINISH

APPROVED SUBSTRATE

3/4" (19 MM) MIN.

NOTE:

1. DRYVIT RECOMMENDS THAT GROUND FLOOR APPLICATIONS AND ALL FACADES EXPOSED TO ABNORMAL STRESS, HIGH TRAFFIC, OR DELIBERATE IMPACT HAVE THE BASE COAT REINFORCED WITH PANZER® MESH PRIOR TO STANDARD PLUS™ MESH. LOCATION OF HIGH IMPACT ZONES SHOULD BE INDICATED ON CONTRACT DRAWINGS.

2. LOCATE EXTERNAL SEALANT JOINT WITHIN 2" (51 MM) OF SUBSTRATE JOINT.

The architecture, engineering, and design of the project using the Dryvit and Tremco products are the responsibility of the project's design professional. All products and systems must comply with local building codes and standards. This detail is for general information and guidance only and Dryvit and Tremco specifically disclaims any liability for the use of this detail. The project design professional determines, in its sole discretion, whether this detail or a functionally equivalent detail is best suited for the project. This detail is subject to change without notice. Contact Dryvit and Tremco to ensure you have the most recent version.

Outsulation® X™ System®



Dryvit Technical Support: 800-556-7752

Detail: Through-Wall Expansion Joint -
Dymonic Simple Seal Option

Drawn by: KAB

Checked by: CB

Scale: NTS

Date: 2/2022

File Name:

OX 32a



Construction Products Group

www.tremcocpg.com