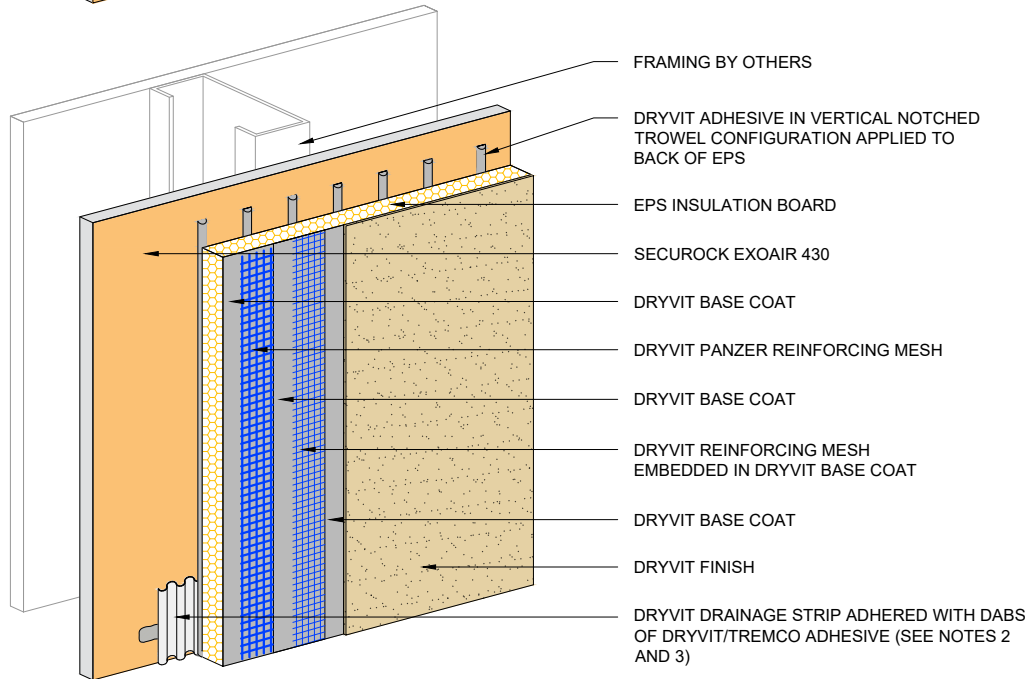


NORMAL IMPACT



HIGH IMPACT

**NOTE:**

1. DRYVIT RECOMMENDS THAT GROUND FLOOR APPLICATIONS AND ALL FACADES EXPOSED TO ABNORMAL STRESS, HIGH TRAFFIC, OR DELIBERATE IMPACT HAVE THE BASE COAT REINFORCED WITH PANZER® MESH PRIOR TO STANDARD OR STANDARD PLUS MESH. LOCATION OF HIGH IMPACT ZONES SHOULD BE INDICATED ON CONTRACT DRAWINGS.

2. AS AN OPTION DRYVIT DRAINAGE TRACK™ CAN BE USED AT SYSTEM TERMINATION AT GRADE, REFER TO GRADE TERMINATION DETAIL FOR CONFIGURATION.

3. DRYVIT DRAINAGE TRACK SHALL ONLY BE USED AT GRADE LEVEL TERMINATIONS.



Dryvit Technical Support: 800-556-7752

*The architecture, engineering, and design of the project using the Dryvit Tremco and USG products are the responsibility of the project's design professional. All products and systems must comply with local building codes and standards. This detail is for general information and guidance only and Dryvit Tremco and USG specifically disclaims any liability for the use of this detail. The project design professional determines, in its sole discretion, whether this detail or a functionally equivalent detail is best suited for the project. This detail is subject to change without notice. Contact Dryvit Tremco and USG to ensure you have the most recent version.*

**Outsulation® Plus MD Securock® ExoAir 430 System®**



Technical Support: 866-209-2404

Detail: Outsulation Plus MD Securock ExoAir 430 System

Drawn by: KAB

Checked by: CB

Scale: NTS

Date: 2/14/2022

File Name:

OPMD SE430 - 1



www.tremcocpg.com