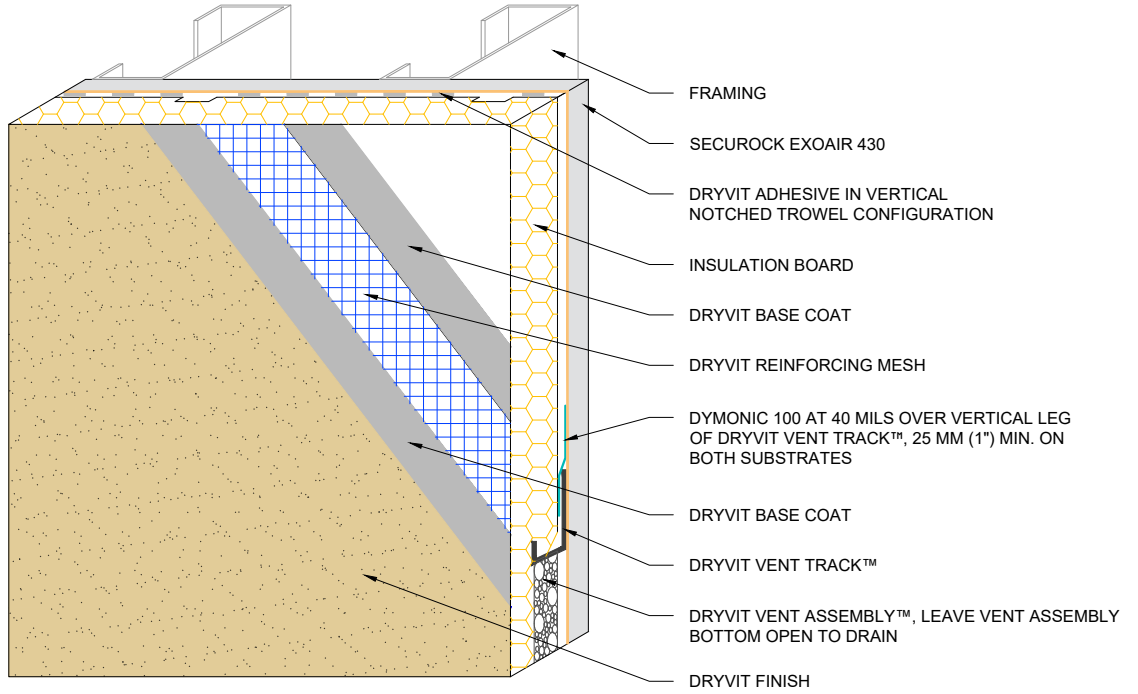
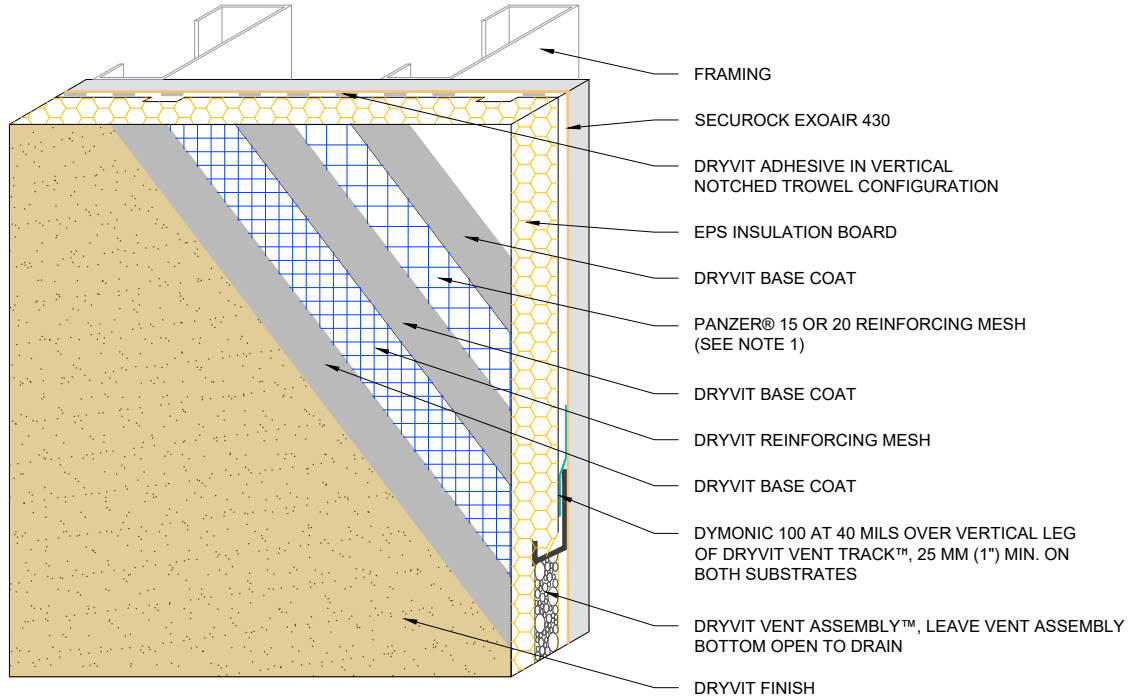


**EIMA  
STANDARD  
IMPACT**



**EIMA  
ULTRA-HIGH  
IMPACT**



NOTE:  
1. DRYVIT RECOMMENDS THAT GROUND FLOOR APPLICATIONS AND ALL FACADES EXPOSED TO ABNORMAL STRESS, HIGH TRAFFIC, OR DELIBERATE IMPACT HAVE THE BASE COAT REINFORCED WITH DRYVIT PANZER® MESH PRIOR TO DRYVIT REINFORCING MESH. LOCATION OF HIGH IMPACT ZONES SHOULD BE INDICATED ON CONTRACT DRAWINGS.

2. LIGHTLY SAND SURFACE OF DRAINAGE TRACK TO MAXIMIZE ADHESION.



Dryvit Technical Support: 866-556-7752

The architecture, engineering, and design of the project using the Dryvit Tremco and USG products are the responsibility of the project's design professional. All products and systems must comply with local building codes and standards. This detail is for general information and guidance only and Dryvit Tremco and USG specifically disclaims any liability for the use of this detail. The project design professional determines, in its sole discretion, whether this detail or a functionally equivalent detail is best suited for the project. This detail is subject to change without notice. Contact Dryvit Tremco and USG to ensure you have the most recent version.

**Outsulation® PE Securock® ExoAir 430 System®**



Detail: Outsulation PE Securock ExoAir 430 System

File Name:

Drawn by: KAB

Checked by: CB

Scale: NTS

Date: 2/11/2022

OSPE SE430 - 1



www.tremcocpg.com