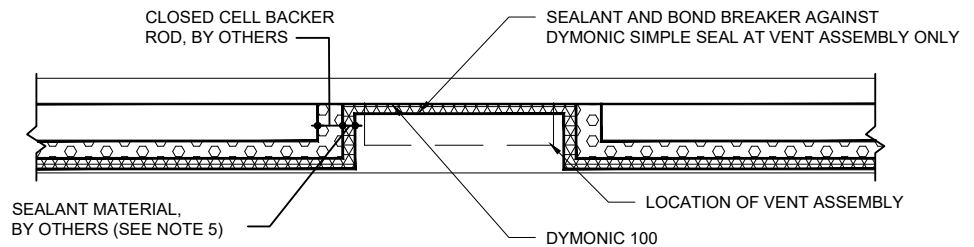


**Section A-A**



**NOTE:**

1. DRYVIT RECOMMENDS THAT GROUND FLOOR APPLICATIONS AND ALL FACADES EXPOSED TO ABNORMAL STRESS, HIGH TRAFFIC, OR DELIBERATE IMPACT HAVE THE BASE COAT REINFORCED WITH PANZER® MESH PRIOR TO STANDARD™ OR STANDARD PLUS™ MESH. LOCATION OF HIGH IMPACT ZONES SHOULD BE INDICATED ON CONTRACT DRAWINGS.
2. EXPANSION JOINT IN THE OUTSULATION PE SECUROCK EXOAIR 430 SYSTEM IS NECESSARY WHERE SIGNIFICANT DIFFERENTIAL MOVEMENT IS EXPECTED AT FLOOR LINES.

3. LOCATE EXTERNAL SEALANT JOINT A MAXIMUM OF 61 MM (2") BELOW BREAK IN SUBSTRATE.
4. LIGHTLY SAND SURFACE OF TRACK TO MAXIMIZE ADHESION.
5. REFERENCE DS920 FOR APPROVED SEALANTS.



Dryvit Technical Support: 800-556-7752

*The architecture, engineering, and design of the project using the Dryvit Tremco and USG products are the responsibility of the project's design professional. All products and systems must comply with local building codes and standards. This detail is for general information and guidance only and Dryvit Tremco and USG specifically disclaims any liability for the use of this detail. The project design professional determines, in its sole discretion, whether this detail or a functionally equivalent detail is best suited for the project. This detail is subject to change without notice. Contact Dryvit Tremco and USG to ensure you have the most recent version.*

**Outsulation® PE Securock® ExoAir 430 System®**



Detail: Horizontal Slip Joint

File Name:

Drawn by: KAB

Checked by: CB

Scale: NTS

Date: 2/11/2022

OSPE SE430 - 17



www.tremcocpg.com