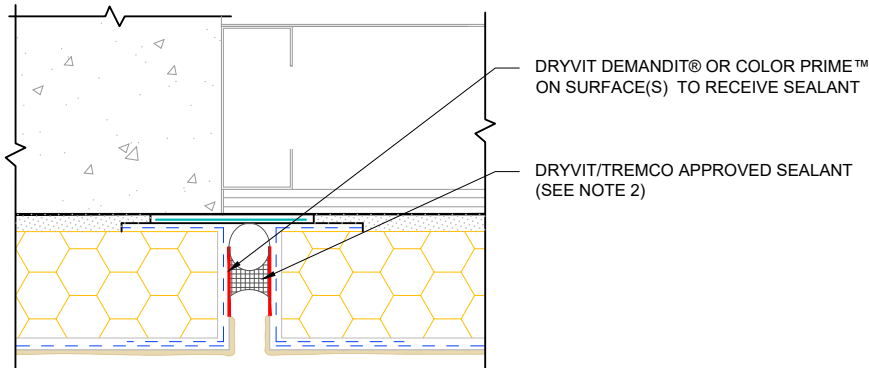
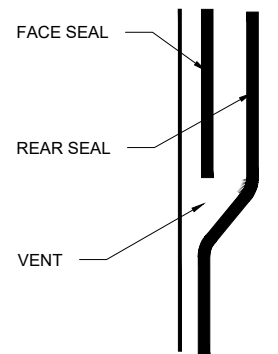


**OPTION**



**A-A**



NOTE:  
 1. DRYVIT RECOMMENDS THAT GROUND FLOOR APPLICATIONS AND ALL FACADES EXPOSED TO ABNORMAL STRESS, HIGH TRAFFIC, OR DELIBERATE IMPACT HAVE THE BASE COAT REINFORCED WITH PANZER® MESH PRIOR TO STANDARD™ OR STANDARD PLUS™ MESH. LOCATION OF HIGH IMPACT ZONES SHOULD BE INDICATED ON CONTRACT DRAWINGS.

2. REFERENCE DS920 FOR APPROVED SEALANTS.



The architecture, engineering, and design of the project using the Dryvit Tremco and USG products are the responsibility of the project's design professional. All products and systems must comply with local building codes and standards. This detail is for general information and guidance only and Dryvit Tremco and USG specifically disclaims any liability for the use of this detail. The project design professional determines, in its sole discretion, whether this detail or a functionally equivalent detail is best suited for the project. This detail is subject to change without notice. Contact Dryvit Tremco and USG to ensure you have the most recent version.

**Outsulation® PE Securock® ExoAir 430 System®**



Detail: Vertical Expansion Joint Options

File Name:

Drawn by: KAB

Checked by: CB

Scale: NTS

Date: 2/11/2022

OSPE SE430 - 18



www.tremcocpg.com