

Guidelines for Installing EPS Greater Than 4"^{1, 2, 3}

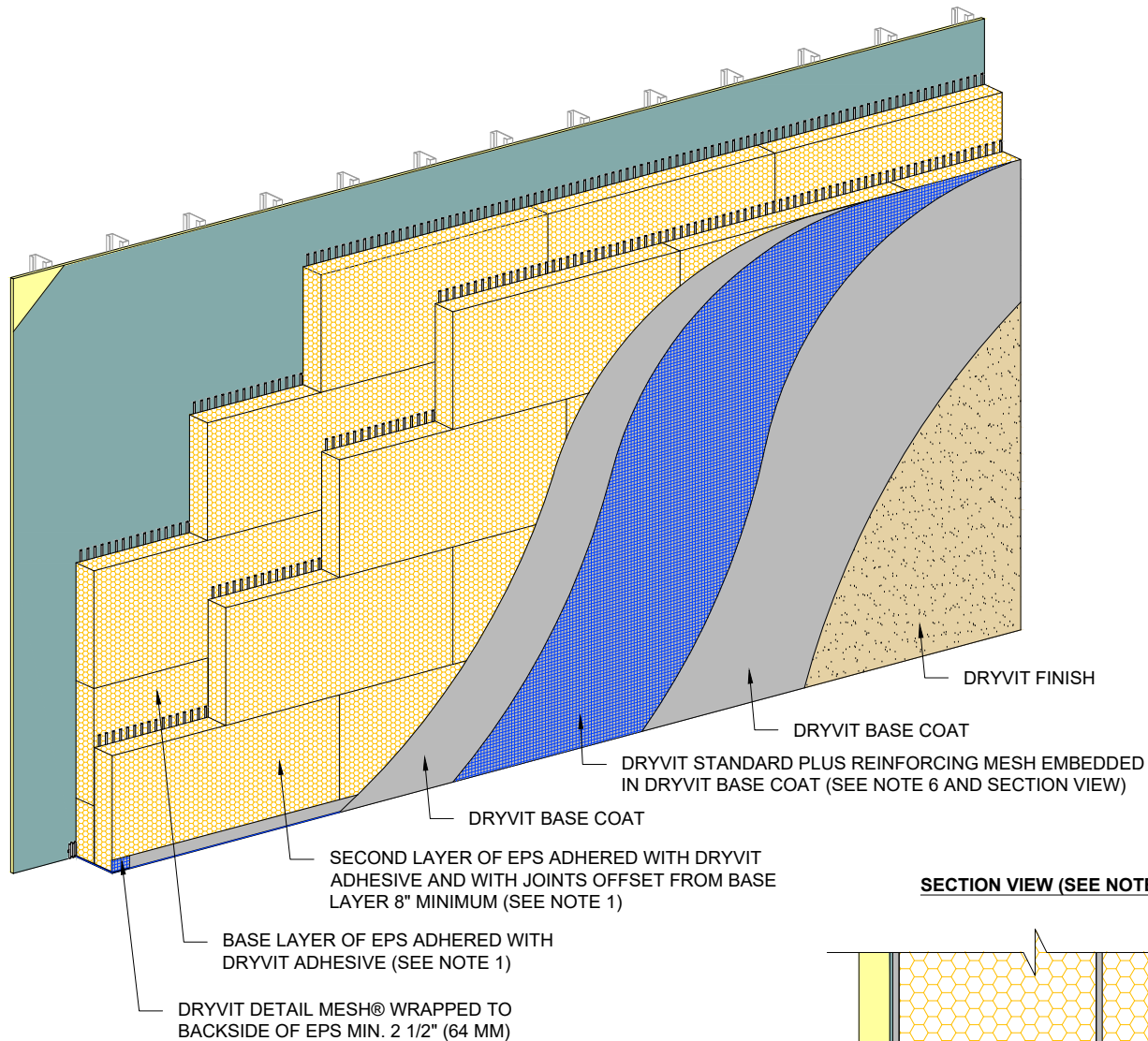
*U.S. Region Only

Guidelines for Installation

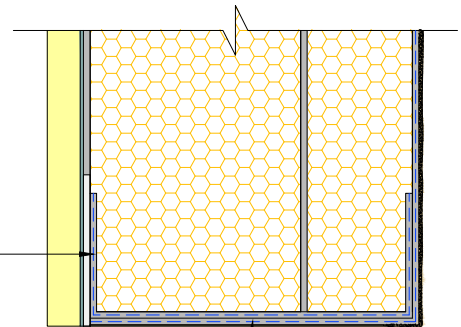
- EPS must be obtained from an approved board supplier.
- EPS must be manufactured in accordance with DS131.
- Total system thickness shall not exceed what is currently stated in [ESR-1232](#) for the Outsulation system, [ESR-1543](#) for the Outsulation Plus MD system, [ESR-1692](#) for the Outsulation LCMD system, [ESR-1821](#) for the Outsulation MD system, or [ESR-4677](#) for the Outsulation Plus MD Securock ExoAir 430 system.³
- Application
 - Due to high stress at board joints and difficulty of maintaining dimensional tolerances in thicker slabs, the EPS shall be installed in layers.
 - The top layer of EPS shall be limited to 4" maximum thickness.
 - The top layer of EPS shall be at least ¾-inch thicker than the deepest reveal.
 - Vertical and horizontal board joints must be offset a minimum of 8".
 - The base layer of EPS shall be applied to the substrate or water-resistive barrier coating with the Dryvit adhesive specified for the system.
 - Allow adhesive to cure for 24 hours and then apply 2nd layer using the Dryvit adhesive specified for the system.
 - Continue application procedure in accordance with the appropriate application instructions for the specified system.
 - Standard Plus Reinforcing Mesh shall be applied as the minimum.

Footnote References

1. *The use of EPS greater than 4" thick should still be approved by the local code official.*
2. *This document is intended when full wall thickness of EPS exceeds 4". It is not intended for foam shapes. Foam shapes would be limited to 13"^{3,4} measured from the face of the sheathing.*
3. *Contact Dryvit Engineering for more information regarding thickness limitations when the proposed design and installation of any Outsulation system deviates from what is provided herein.*
4. *This document is intended for non-rated walls. For fire-rated walls refer to Dryvit testing and engineering analysis letters for maximum insulation thickness based on the proposed products.*



SECTION VIEW (SEE NOTE 5)



DRYVIT DETAIL MESH® WRAPPED TO BACKSIDE OF EPS MIN. 2 1/2" (64 MM)

DRYVIT STANDARD PLUS REINFORCING MESH EMBEDDED IN DRYVIT BASE COAT (SEE NOTE 6)

NOTES:

1. THE USE OF EPS GREATER THAN 4" THICK SHOULD STILL BE APPROVED BY THE LOCAL CODE OFFICIAL.
2. THIS DETAIL IS INTENDED WHEN FULL WALL THICKNESS OF EPS EXCEEDS 4". IT IS NOT INTENDED FOR FOAM SHAPES.
3. CONTACT DRYVIT ENGINEERING FOR MORE INFORMATION REGARDING THICKNESS LIMITATIONS WHEN THE PROPOSED DESIGN AND INSTALLATION OF ANY OUTSULATION SYSTEM DEVIATES FROM GUIDELINES FOR INSTALLING EPS GREATER THAN 4".
4. THIS DOCUMENT IS INTENDED FOR NON-RATED WALLS. FOR FIRE-RATED WALLS REFER TO DRYVIT TESTING AND ENGINEERING ANALYSIS LETTERS FOR MAXIMUM INSULATION THICKNESS BASED ON THE PROPOSED PRODUCTS.
5. OUTSULATION PLUS MD SYSTEM SHOWN FOR ILLUSTRATIVE PURPOSES ONLY. REFER TO APPROPRIATE DRYVIT SYSTEM LITERATURE FOR SYSTEM INSTALLATION.
6. FOR EASE OF APPLICATION ORIENT MESH ROLL VERTICALLY TO WRAP BOTTOM EDGE OF SYSTEM (ORIENTATION LOCALIZED TO TERMINATIONS).

The architecture, engineering, and design of the project using the Dryvit products are the responsibility of the project's design professional. All products and systems must comply with local building codes and standards. This detail is for general information and guidance only and Dryvit specifically disclaims any liability for the use of this detail. The project design professional determines, in its sole discretion, whether this detail or a functionally equivalent detail is best suited for the project. This detail is subject to change without notice. Contact Dryvit to ensure you have the most recent version.

Outsulation Systems

Detail: Installation of Multi Layered EPS Insulation				File Name:	
Drawn by: EM	Checked by: CW	Scale: NTS	Date: 2/26/2024	26318	
www.tremcocpg.com					



Dryvit Technical Support: 800-556-7752



Construction Products Group