



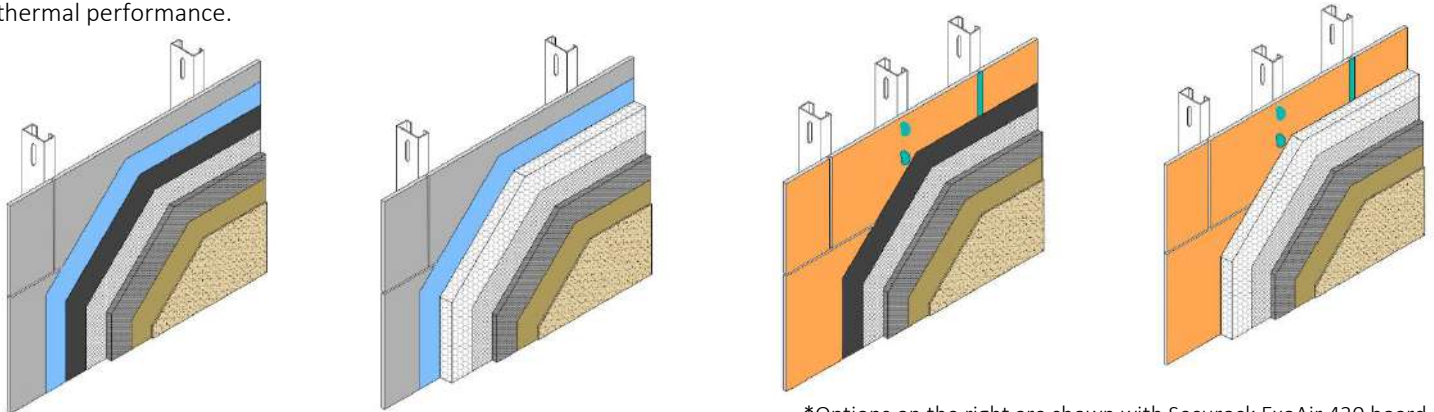
TECHNICAL DATA SHEET

StucCoat™ Three- Coat System

Fiberglass Reinforced Portland Cement Plaster
Applied to Metal or Wood Framed Walls
DS1030

PRODUCT DESCRIPTION

The StucCoat Three-Coat System (Scratch and Brown) consists of an approved water resistant barrier and metal lath, StucCoat Base or Crack Isolation Base, acrylic primer and an acrylic coating or finish with the option of including Continuous Insulation for increased thermal performance.



*Options on the right are shown with Securock ExoAir 430 board, as manufactured by USG.

BASIC USES

StucCoat Three Coat System is a durable, exterior cladding intended for use over wood or steel framing and Dryvit approved sheathing.

FEATURES & BENEFITS

FEATURE

- Durable
- Water-Resistive
- Cost Effective
- Aesthetic Variety

PROPERTIES

Testing: Complies with ASTM C 1328 and IBC requirements for Portland cement plaster.

Job Conditions: Air and surface temperature for application of StucCoat Base must be 40 °F (4 °C) or higher and must remain so for a minimum of 24 hours.

Temporary Protection: Must be provided at all times to protect StucCoat Base, primer and finish applications from damaging effects of precipitation, dirt and job-site contamination.

COMPONENTS

Water-resistive barrier: Shall comply with all local building codes. Minimum 2 layers are required over wood-based substrates for liquid applied water resistive barriers, or Dryvit Securock ExoAir 430 Board as manufactured by USG.

Continuous Insulation (optional): Rigid insulation applied to the exterior of the sheathing, before StucCoat Scratch and Brown coat to increase overall system insulative value, refer to DS1032 for Installation Details. **Note:** continuous insulation, when installed as part of the system, replaces the 2 layers of felt paper backing [slip sheet].

Lath (by others): Approved paper backed, or other self-furring shall be galvanized, minimum 2.5 lbs/sq yd (1.4 kg/m²) or 3.4 lbs/yd² (1.9 kg/m²) and comply with ASTM C 841 and C 847; 16 gauge galvanized self-furring welded wire lath (ASTM C 933), minimum 1 1/2 x 17 galvanized woven wire lath (ASTM C 1032); or 3/8 in (9.5 mm) galvanized rib lath. Minimum 2.5 lbs/sq yd (1.4 kg/m²) lath is required for thicknesses of 3/4 in (19 mm) or greater. The specific type is designated by the designer based on project requirements. Lath installation shall conform to ASTM C 1063 and local code requirements.

Cement Plaster Base (Scratch and Brown Coat): Shall be StucCoat Base in either sanded or concentrate formula. Refer to DS997 (sanded) or DS1027 (concentrate) for complete mixing and application instructions.

Acrylic Primer: Shall be Color Prime™, DS410, Color Prime-W™, DS474 or Primer with Sand™, DS477. Refer to specific product data sheets for complete application instructions.

Acrylic Coating:

Demandit® Smooth – integrally colored, smooth exterior wall coating enhanced with proven mildew resistance. See DS400 for complete information.

Weatherlastic® Smooth – integrally colored, elastomeric, smooth exterior wall coating enhanced with proven mildew resistance. See DS433 for complete information.

APPLICATION

StucCoat System must be applied in accordance with local and national code requirements and ASTM C 926. Refer to StucCoat Three-Coat System Specifications, DS1028, DS1029, DS1044, and DS1045; StucCoat Three-Coat System Details, DS1031, DS1032, DS1033, DS1034.

FINISHES

For complete information, please refer to the product data sheets.

Acrylic Finish

- DPR – flexible textured exterior wall finish with integral color. Available in 5 primary textures: Quarzputz®, Sandblast®, Sandpebble®, Sandpebble Fine™ and Freestyle®, DS416.
- PMR™ – flexible textured exterior wall finish with integral color and enhanced with additional mildew protection, DS490.
- HDP™ – flexible textured exterior wall finish with integral color and optimized for hydrophobic performance, DS811.
- E™ Finish – lightweight, highly flexible textured exterior wall finish with integral color. Available in 3 textures: Quarzputz E, Sandpebble E, and Sandpebble Fine E, DS468.
- Weatherlastic - elastomeric textured exterior wall finish with integral color. Available in 5 textures: Adobe, Quarzputz, Sandpebble, Sandpebble Fine and Mojave, DS418.

SPECIALTY FINISHES

- Ameristone™ - Multi-colored quartz aggregate with a flamed granite appearance, DS434.
- Stone Mist® - Ceramically colored quartz aggregate, DS420.
- Custom Brick™ - Acrylic polymer-based finish used in conjunction with a proprietary template system to create the look of brick, DS227.
- TerraNeo® - Acrylic-based finish with large mica chips and multi-colored quartz aggregates, DS481.
- Limestone™ - A premixed, 100% acrylic-based finish designed to replicate the appearance of limestone blocks, DS472.
- Finesse™ - A Smooth 100% acrylic-based dirt pickup resistance finish, DS859.

Tremco Construction Products Group (CPG) brings together the Commercial Sealants & Waterproofing and Roofing & Building Maintenance divisions of Tremco CPG Inc.; Dryvit and Willseal brands; Nudura Inc.; Prebuck LLC; Tremco Barrier Solutions, Inc.; Weatherproofing Technologies, Inc.; Weatherproofing Technologies Canada, Inc.; and Pure Air Control Services, Inc.



dryvit.com | 800.556.7752



Construction Products Group

3735 Green Rd. | Beachwood, OH 44122
800.321.7906 | tremcocpg.com